

LUNA COUNTY-NM
BERENDA MCWRIGHT, CLERK
202104840
1 of 7
11/10/2021 02:12:00 PM
BY TONI

LUNA COUNTY, NEW MEXICO

ORDINANCE 108

LUNA COUNTY REDISTRICTING ORDINANCE

WHEREAS, Section 1-3-13F, NMSA 1978 requires the Board of County Commissioners to create or redraw the Commissioner Districts so that the number of persons in each district are an nearly equal in population as practical but within five percent (5%) of the mean, as shown in the most recent federal decennial census.

WHEREAS, the 2020 federal decennial census established that the Luna County population is 25,427 with the ideal mean for each Commissioner District being 8,427.

WHEREAS, as currently drawn the Commissioner districts, attached hereto as Exhibit A, are populated as follows: District 1 = 8,692 with a mean deviation of 2.56%; District 2 = 8,900 with a mean deviation of 5.01%; and District 3 = 7,835 with a mean deviation of 7.55%.

WHEREAS, the least disruptive and most equitable manner of adjustment is to extend a portion, located entirely in voting precinct 17, in Commissioner District 3 east across Columbus Highway east to County Club Road between Solana Rd and Monte Vista Road as shown in Exhibit B, attached hereto.

NOW, THEREFORE, BE IT RESOLVED by the Board of County Commissioners of Luna County that the boundaries of the Commissioner Districts in Luna County are hereby adopted as modified and designated on the attached Exhibit B.

IT IS FURTHER RESOLVED, that the Luna County Clerk and the County Manager are hereby directed to take all necessary actions to produce for each Commissioner District a legal description and map based on GPS points and thereafter published in the Luna County Clerk's Office and the Luna County website.

APPROVED AND ADOPTED THIS 10th DAY OF NOVEMBER, 2021 BY THE BOARD OF COUNTY COMMISSIONERS OF LUNA COUNTY, OF NEW MEXICO

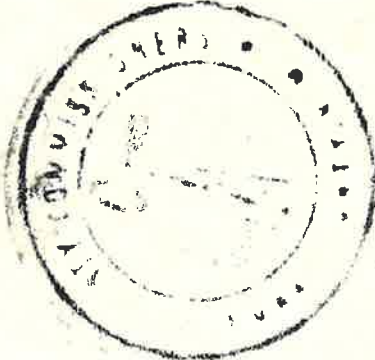
ATTEST:

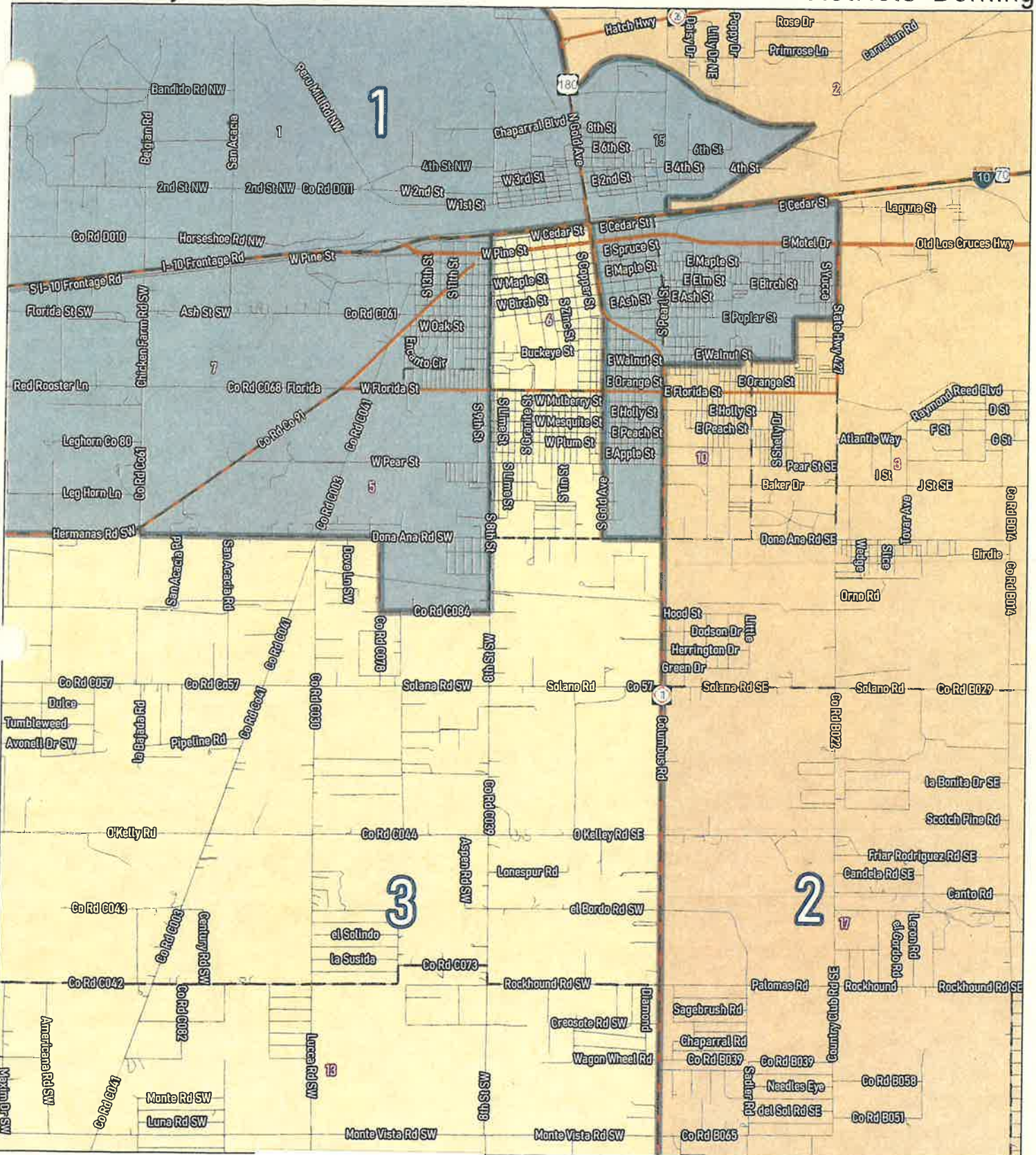
ABSENT
Barbara L. Reedy, Chair
Commissioner, District 1

Linda M. Smrkovsky
Linda M. Smrkovsky,
Commissioner, District 2

John S. Sweetser
John S. Sweetser,
Commissioner, District 3

Berenda McWright
Berenda McWright,
County Clerk

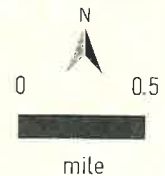




Bk 44 Pg 2720

EXHIBIT A

Precincts



Research & Polling, Inc. distributes this map assuming no liability of any errors, omissions, or inaccuracies in the information provided regardless of the cause in reliance upon any maps.

11/04/2021

LUNA COUNTY-NM
 BERENDA MCHRIGHT, CLERK
 202104840
 2 of 7
 11/10/2021 02:12:00 PM
 BY TONI

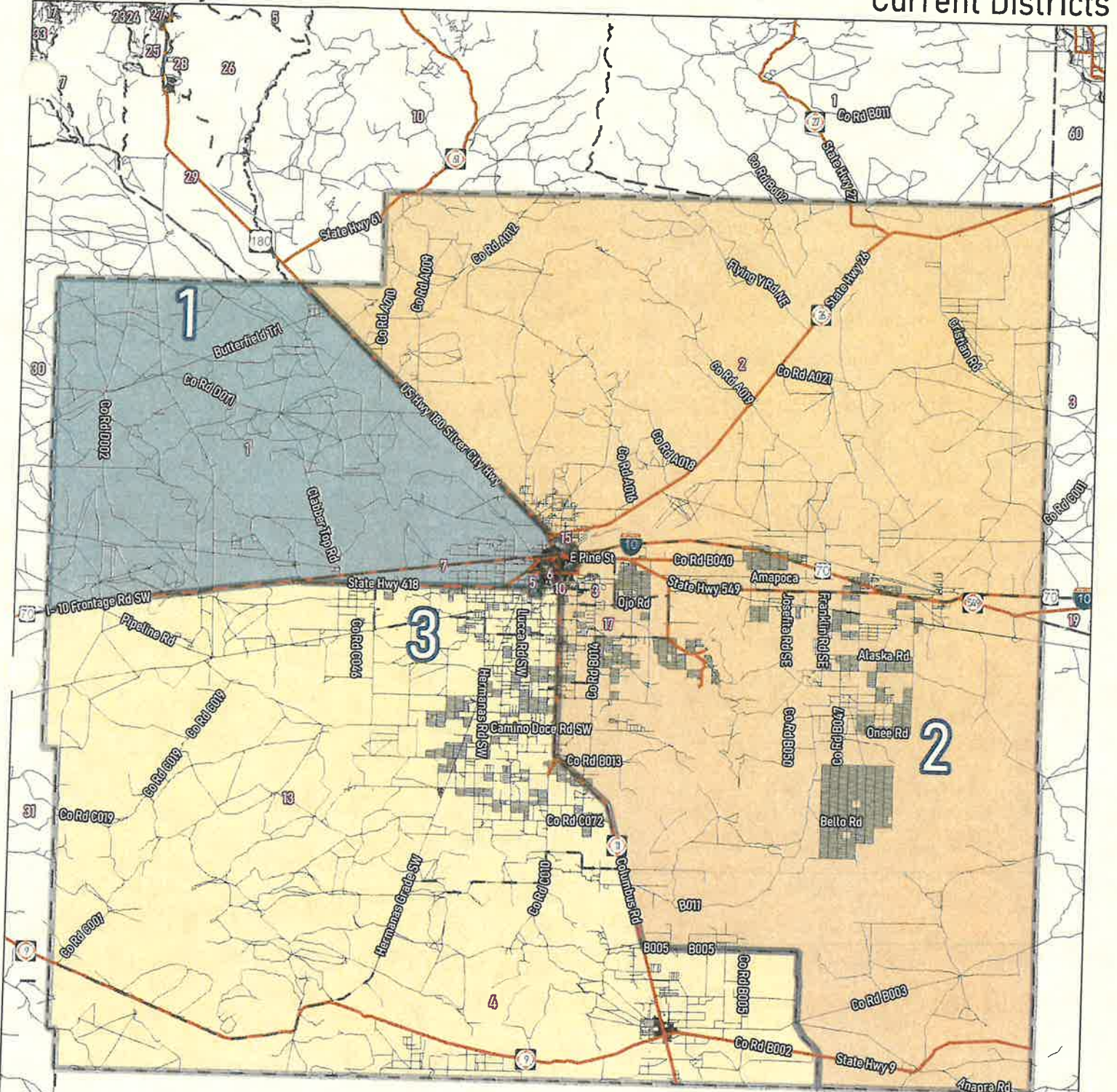
Luna County Commission
Current Districts

2020 Census
Redistricting

District	Hispanic		Non-Hispanic				
	Pop	Deviation	White	Native American	Black	Asian	Other Races
1	8,692	217 2.6%	2,073 23.8%	35 0.4%	94 1.1%	67 0.8%	175 2.0%
18+	6,385		1,740 27.3%	26 0.4%	70 1.1%	54 0.8%	136 2.1%
2	8,900	425 5.0%	3,478 39.1%	70 0.8%	65 0.7%	47 0.5%	205 2.3%
18+	6,932		3,117 45.0%	55 0.8%	47 0.7%	43 0.6%	178 2.6%
3	7,835	-640 -7.6%	2,120 27.1%	38 0.5%	69 0.9%	47 0.6%	174 2.2%
18+	5,801		1,853 31.9%	28 0.5%	58 1.0%	35 0.6%	128 2.2%
Totals	25,427	Ideal: 8,475	7,671 30.2%	143 0.6%	228 0.9%	161 0.6%	554 2.2%
18+	19,118		6,710 35.1%	109 0.6%	175 0.9%	132 0.7%	442 2.3%

Bk 44 Pg 2721

LUNA COUNTY-NM
BERENDA MCWRIGHT, CLERK
202104840
3 of 7
11/10/2021 02:12:00 PM
BY TONI



Bk 44 Pg 2722

LUNA COUNTY-NM
 BERENDA MCWRIGHT, CLERK
 202104840
 4 of 7
 11/10/2021 02:12:00 PM
 BY TONI

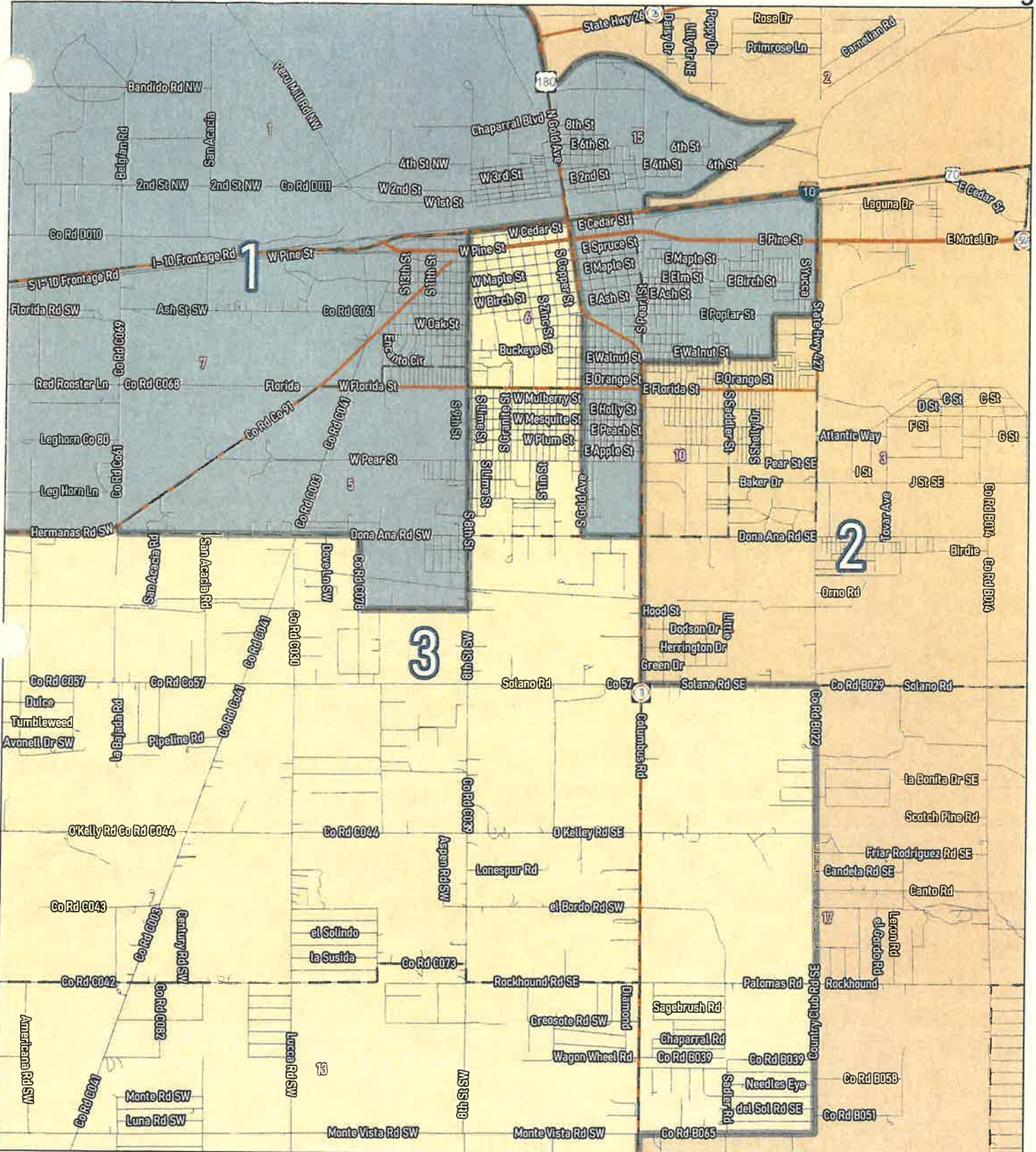


▭ Precincts



Research & Polling, Inc. distributes this map assuming no liability for any errors, omissions, or inaccuracies in the information provided regardless of the cause in reliance upon any maps.

11/04/2021



RESEARCH POLLING INC



LUNA COUNTY-NM
BERENDA MCHRIGHT, CLERK
202104840

5 of 7
11/10/2021 02:12:00 PM
BY TONI

Precincts

EXHIBIT B



Research & Polling, Inc. distributes this map assuming no liability for any errors, omissions, or inaccuracies in the information provided regardless of the cause in reliance upon any maps.

11/04/2021

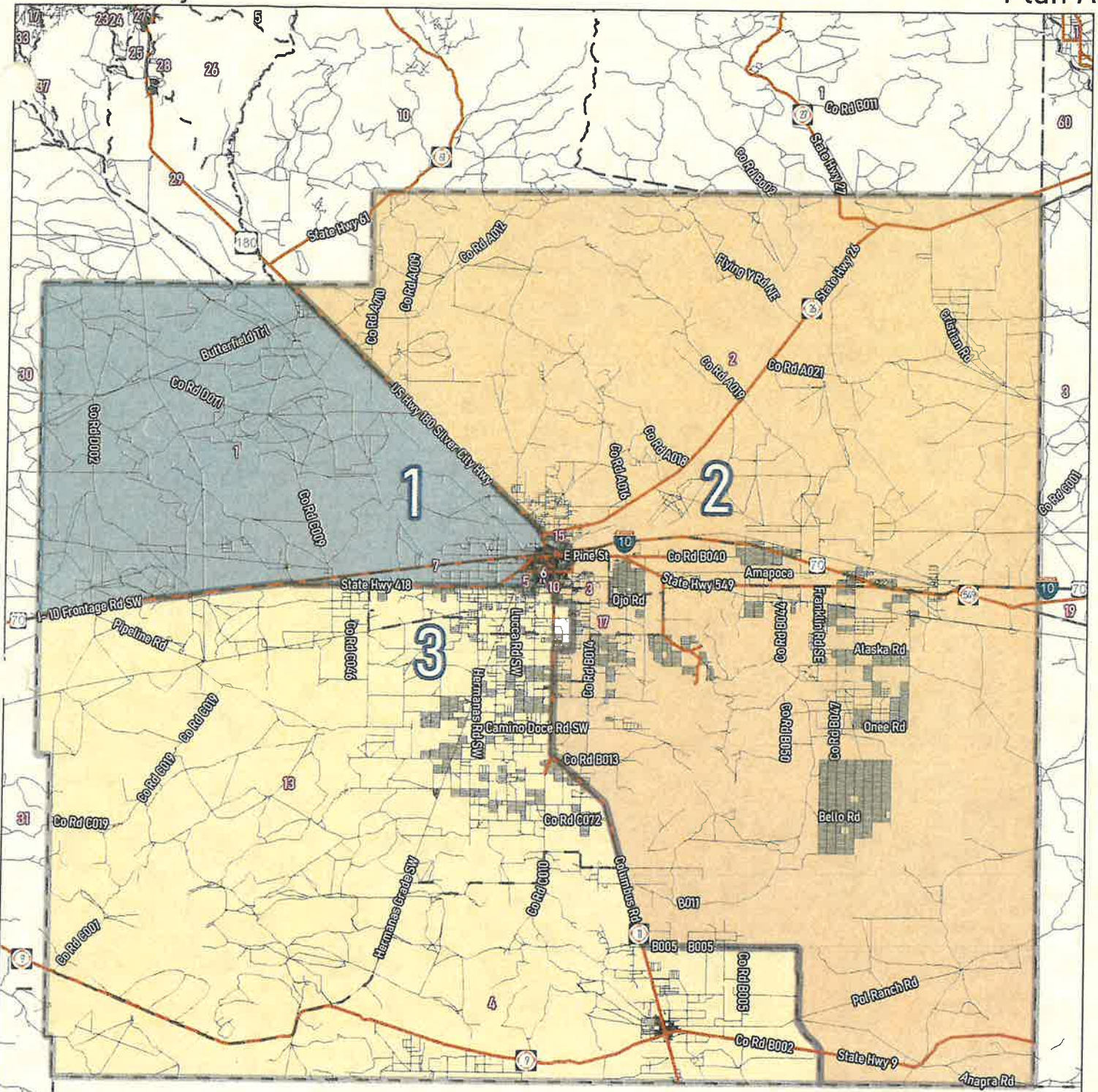
Luna County Commission
Plan A

2020 Census
Redistricting

Bk 44 Pg 2724

District	Deviation			Non-Hispanic											
	Pop	Deviation	Hispanic	White	Native American	Black	Asian	Other Races							
1	8,692	217	2.6%	2,073	23.8%	35	0.4%	94	1.1%	67	0.8%	175	2.0%		
18+	6,385			1,740	27.3%	26	0.4%	70	1.1%	54	0.8%	136	2.1%		
2	8,531	56	0.7%	4,779	56.0%	3,373	39.5%	68	0.8%	64	0.8%	44	0.5%	203	2.4%
18+	6,667			3,318	49.8%	3,029	45.4%	55	0.8%	46	0.7%	43	0.6%	176	2.6%
3	8,204	-271	-3.2%	5,643	68.8%	2,225	27.1%	40	0.5%	70	0.9%	44	0.5%	182	2.2%
18+	6,066			3,873	63.8%	1,941	32.0%	28	0.5%	59	1.0%	35	0.6%	130	2.1%
Totals	25,427	Ideal: 8,475		16,670	65.6%	7,671	30.2%	143	0.6%	228	0.9%	155	0.6%	560	2.2%
18+	19,118			11,550	60.4%	6,710	35.1%	109	0.6%	175	0.9%	132	0.7%	442	2.3%

LUNA COUNTY-NM
BERENDA MCHRIGHT, CLERK
202104840
6 of 7
11/10/2021 02:12:00 PM
BY TONI



LUNA COUNTY-NM
 BERENDA MCHWRIGHT, CLERK
 202104840
 7 of 7
 11/10/2021 02:12:00 PM
 BY TONI



7 Precincts



Research & Polling, Inc. distributes this map assuming no liability for any errors, omissions, or inaccuracies in the information provided regardless of the cause in reliance upon any maps.

11/04/2021