

MCKEAN COUNTY 3 G PROGRAM
ANNUAL REPORT FOR 2016
“HELPING OTHERS BY HELPING OURSELVES”



PROJECT MISSION:

**PROVIDE A STEADY SOURCE OF AVAILABLE
COMMUNITY SERVICE SITES.**

**PROVIDE A VALUABLE EXPERIENCE TO BOTH
INDIVIDUALS PARTICIPATING IN THE PROGRAM AND
OUR COMMUNITY**

**PROVIDE TRAINING AND SKILLS TO THOSE
PARTICIPATING IN THE PROGRAM.**

TABLE OF CONTENTS

<u>Introduction</u>	3
<u>Community Support</u>	4
<u>Community Service Staff</u>	5-7
<u>New Water System</u>	7
<u>Finished Barn</u>	8
<u>Career Link</u>	9
<u>Smethport Fire Department Annual Spring Bizarre</u>	10
<u>Bridge Dedication</u>	11
<u>Trail System</u>	12
<u>Route 219 Welcoming Garden</u>	13
<u>Poor Farm Classroom</u>	14
<u>Halloween & Christmas Crafts</u>	15
<u>Barn Crafted Outdoor Furniture</u>	16-17
<u>Bus Tour 2016</u>	18
<u>Fair Week</u>	19-20
<u>Vegetables and Produce</u>	21
<u>2016 Community Service and Locations and Hours</u>	22
<u>Hour of Community Service in 2016</u>	23
<u>Incarcerated Males/Females</u>	24
<u>Jail Population</u>	25
<u>Total Population of Incarceration</u>	26
<u>2016 Expenses and Cost</u>	27
<u>Statistics On Reduced Jail Population</u>	28
<u>Non-Financial Benefits</u>	29
<u>Community Service Account</u>	30
<u>Looking Ahead & Ending Notes</u>	31

Introduction

Six years ago, McKean County put its trust in the Good Growing Gardens Program (3G) and our trust in the program has paid off. We have seen a harvest of vegetables, fruits, flowers, and saved tax dollars. Most importantly, we have seen the program revitalize the goals of those that have participated in it.

McKean County has cultivated a garden and that Garden has reflected the best in us.



COMMUNITY SUPPORT

The McKean County 3G Program would not be possible without the continued support of the McKean County Commissioners, the McKean County Jail and its staff and the community.



Pictured from left to right: Chief Adult Probation Officer Gary Seefeldt, President Judge John Pavlock, Commissioner Al Pingie, Commissioner Carol Duffy, Commissioner Cliff Lane, Sandi Tunno, Kristin Dillenbeck and Mike Barnard, the Good Growing Garden Staff.

COMMUNITY SERVICE

The 3G Program is administered through McKean County Adult Probation and many members of the Probation Staff assist with the program. The following three Adult Probation employees are specifically assigned to administer and manage the program:

Mike Barnard
Community
Service
Coordinator



Sandi Tunno
Community
Service
Specialist

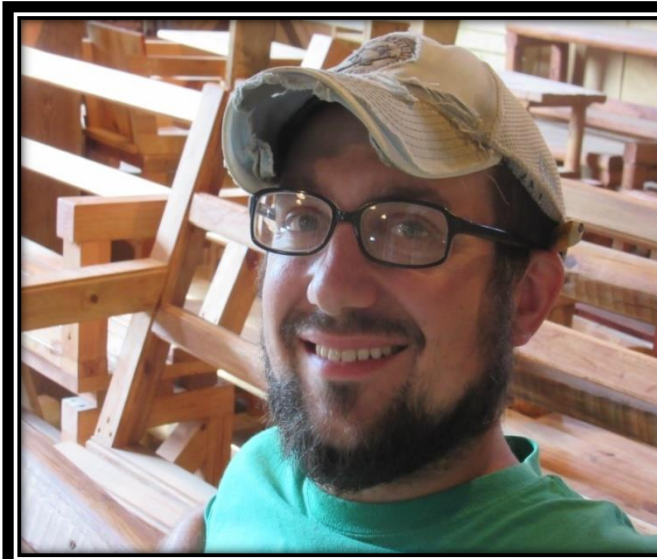


Kristin Dillenbeck
Community
Service
Administrative
Assistant



Matthew
Bailey
Part Time
Summer
Community
Service
Assistant

Shane helped to design and install our new water system. It has made it more efficient to supply the garden all of the water it needs.



***Shane Locke
Part Time
Summer
Community
Service
Assistant***

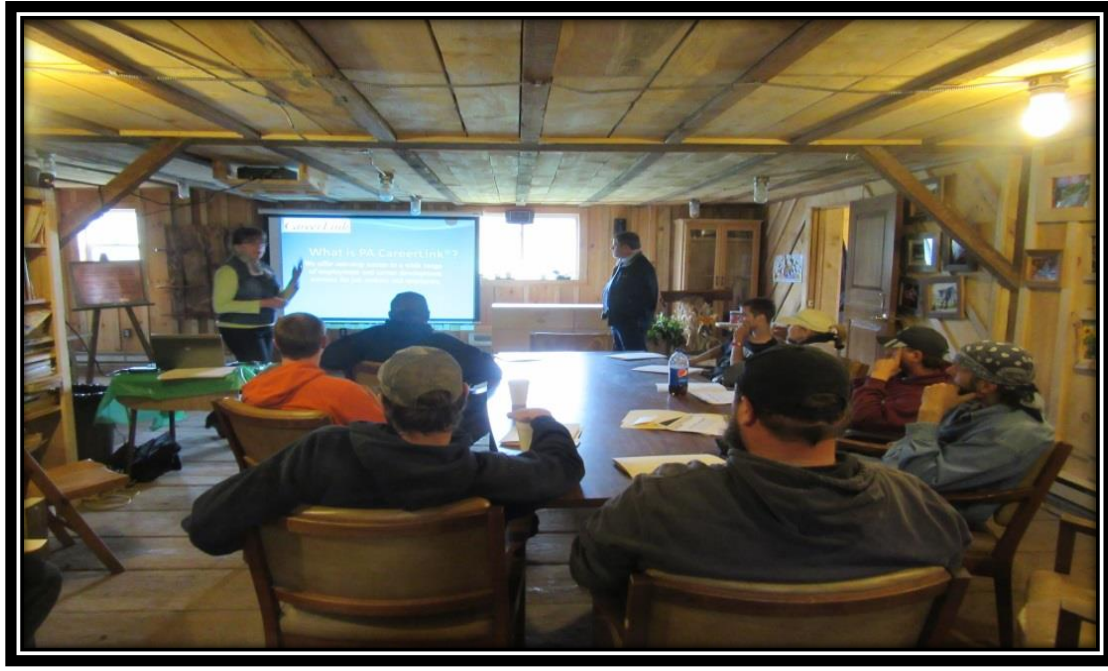
The New Water System



With the help from county maintenance employee Steve Dixon and Community Service participants, we finally finished painting the Barn!



Local Career Link Office comes once a month to help participants with resumes', job search, and interviewing skills.



Terry Cole is the *Director & Instructor* for McKean and Potter County



Smethport Fire Department Annual Spring Bazaar

AT THE 3G STAND, MIKE & SANDI ANSWERED QUESTIONS ABOUT THE PROGRAM AND ENCOURAGED THE PUBLIC TO STOP BY THE BARN.



After several years of planning and hard work, the foot bridge was dedicated in memory of former residents and staff of the McKean County Poor Farm. President Judge John H. Pavlock is seen reading a very informative and touching tribute before the unveiling of the plaque.



Judge Pavlock and Commissioner Cliff Lane unveil the plaque which is on the bridge permanently.



Ribbon cutting ceremony was held opening the Orchard Trail System from the Domestic Relations Building to the foot bridge.



Some of the attendees at the Ribbon Cutting Ceremony.



Some of the participants that helped build the trail are seen talking with Judge Pavlock.

3G's third garden, the 219 Welcoming Garden, is located in Bradford along U.S. Route 219.



Crossroads Class at the Barn



Adam Bickford, an Adult Probation officer for McKean County for 10 years, instructs participants in the areas of choices, trust, responsibility, coping with stress, and alcohol and drugs victimization. Classes are 6 weeks long which are facilitated by Kristin Dillenbeck and Adam Bickford.

CRAFTS FOR ALL SEASONS



Barn Crafted Furniture



Beautiful handmade tables that can be used indoors or outdoors.



**Some of our most popular hand crafted chairs made
by Community Service Participants.**

The First Tour Buses at the Poor Farm! Hopefully
More to Come!



A tour of 75 people toured the Barn and they were given the history of the Poor Farm. They explored the grounds and relaxed on the bridge. We're looking forward to more tours in 2017!

McKean County Fair Week 2016



Many fairgoers enjoyed the spectacular colors of the garden.



Award Winning Vegetables At the McKean County Fair



Vegetables and Produce

Provided to the Jail in 2016

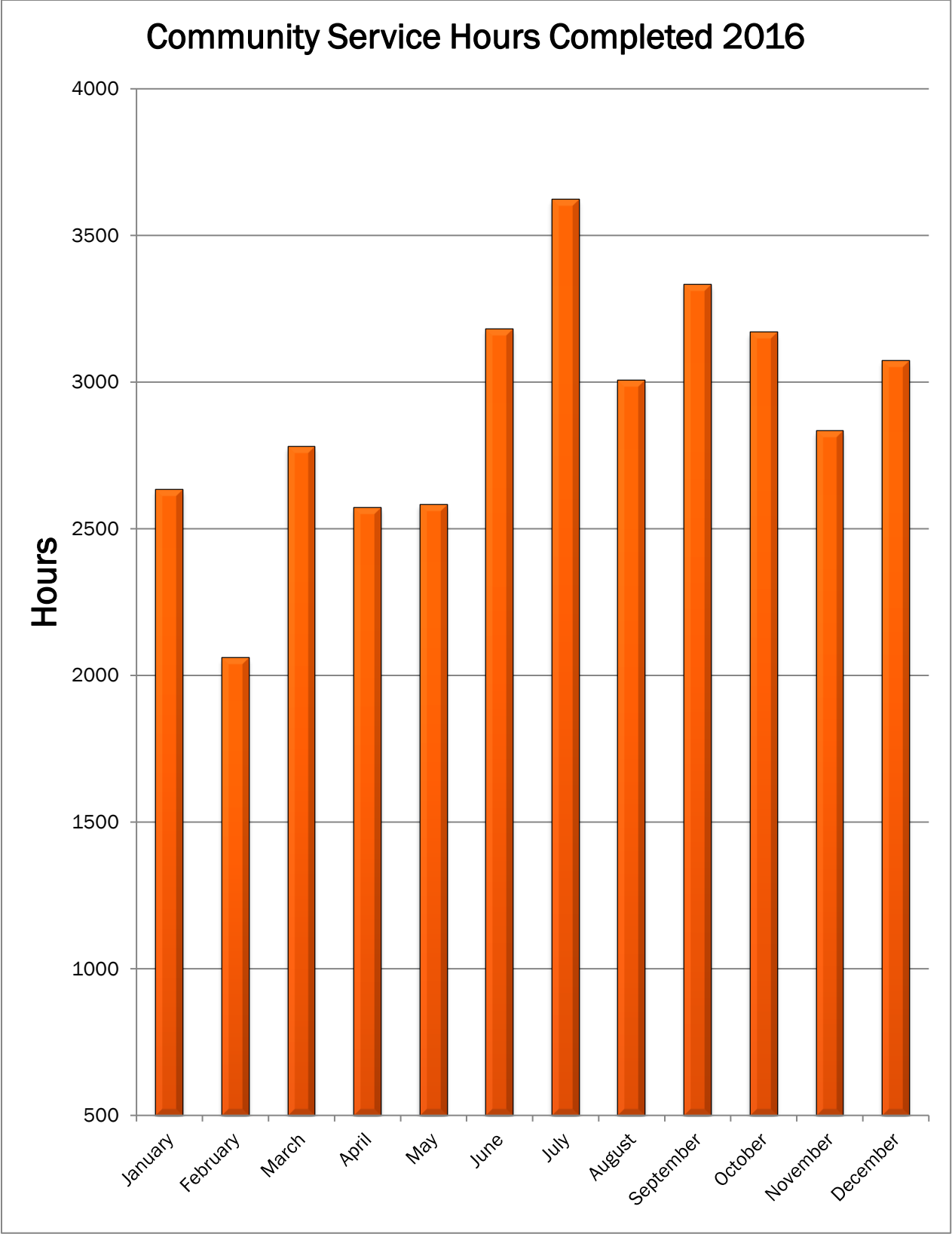
Leaf Lettuce.....	91 LBS
Green Onions	188 LBS
Peas.....	22 LBS
Cucumbers.....	136 LBS
Green Peppers.....	187 LBS
Green Beans.....	11 LBS
Slicing Tomato	310 LBS
Zucchini.....	28 LBS
Cherry Tomato.....	41 LBS
Roma Tomato.....	190 LBS
Banana Peppers.....	4 LBS
Jalapeno Peppers.....	11 LBS
Red Onions.....	6 LBS
Garlic.....	6 LBS
TOTAL:	1241 LBS



2016 COMMUNITY SERVICE LOCATIONS AND HOURS

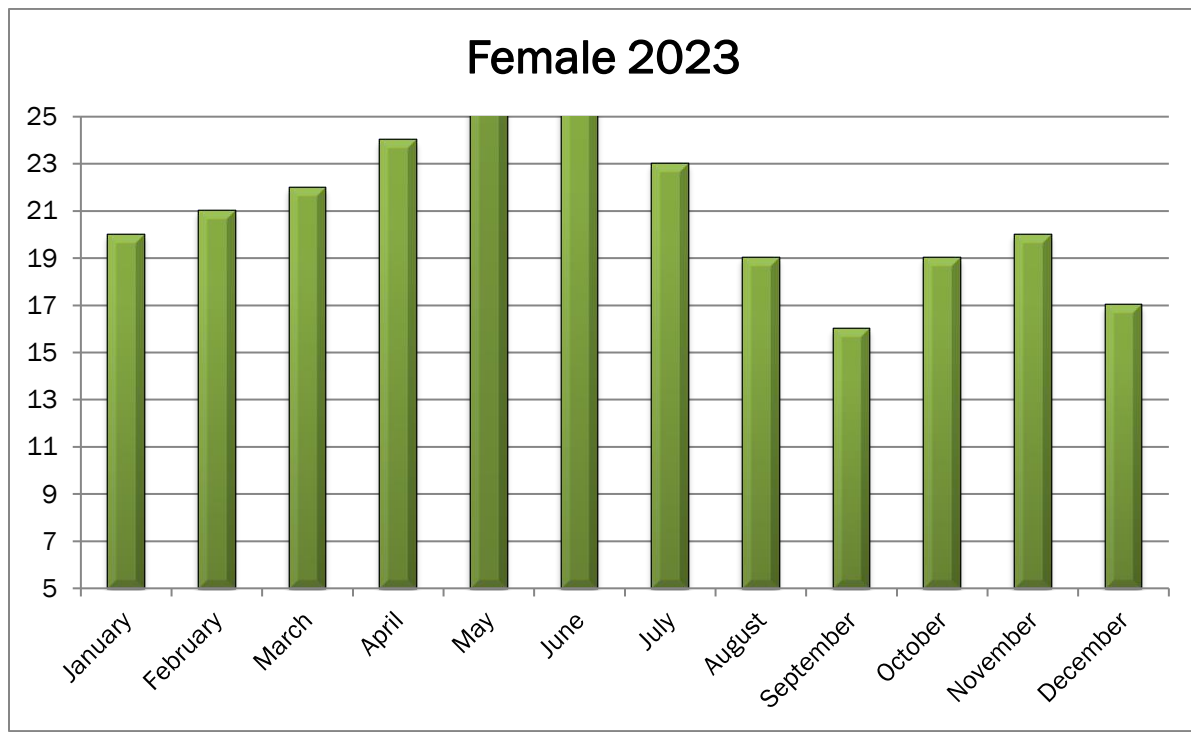
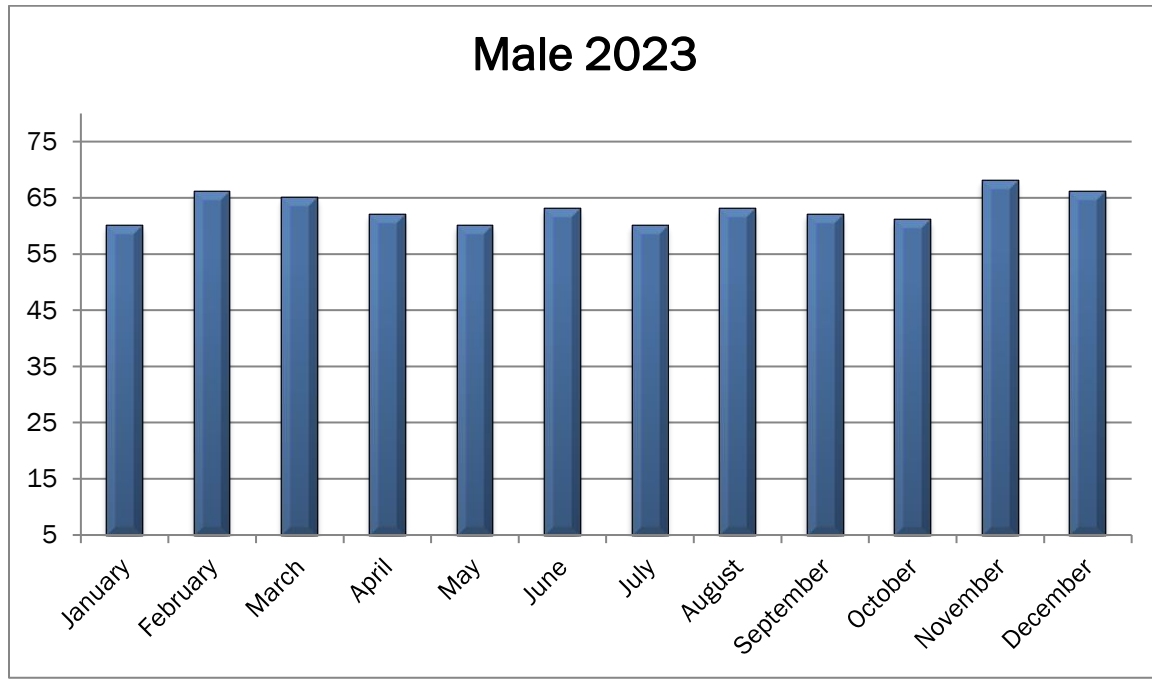
<u>Place</u>	<u>Hours</u>	<u>Place</u>	<u>Hours</u>
Kane Com. Center	826.5	Norwich Fire Dept.	40
Kane Goodwill	15	Erie Co. Hope House	4
Kane Fish & Game	20	Lucky Cat Rescue	175
Kane Chamber Comm.	8.5	Big Bro & Big Sister	69
Friendship Table	791.5	Olean Genesis House	46
Bradford Library	131.5	Kane Meth. Church	2
SPCA	905.5	Fairgrounds	180
Bfd. Youth Corp	717	Lafayette Twp.	38
Bfd. Goodwill	835.25	Stinkfest	21
YWCA	585.5	Bradford Hospital	20
Camp Mission Meadows, NY	22	Kane Fire Dept.	49
Kane Library	4	James City Car Show	24.5
Kane Food Pantry	18	Grace Luth. Church	32
YMCA	189.5	Otto Old Home Days	24
Ludlow Fire Dept.	33.5	Smethport Firehall	137
Limestone Rec. Center	94.5	Willowdale Cemetery	106
Olean Salv. Army	37	Crooks Farm Fest.	60
Bradford City	364.75	Eldred Fire Dept.	46
Port Boro	349	Lewis Run Boro	175.5
Kane Luth. Church	26	Bradford Salvation Army	107
Italian Festival	246	Port Allegany Library	21
Pittsburgh Recovery	150	Evergreen Elm	20
Mt. Jewett Fire Dept.	130	McKean Co. Prison	18,187
Swedish Festival	46	3G Garden Program	8,690
Kinzua Bridge Fest	7		

Community Service Hours Completed 2016

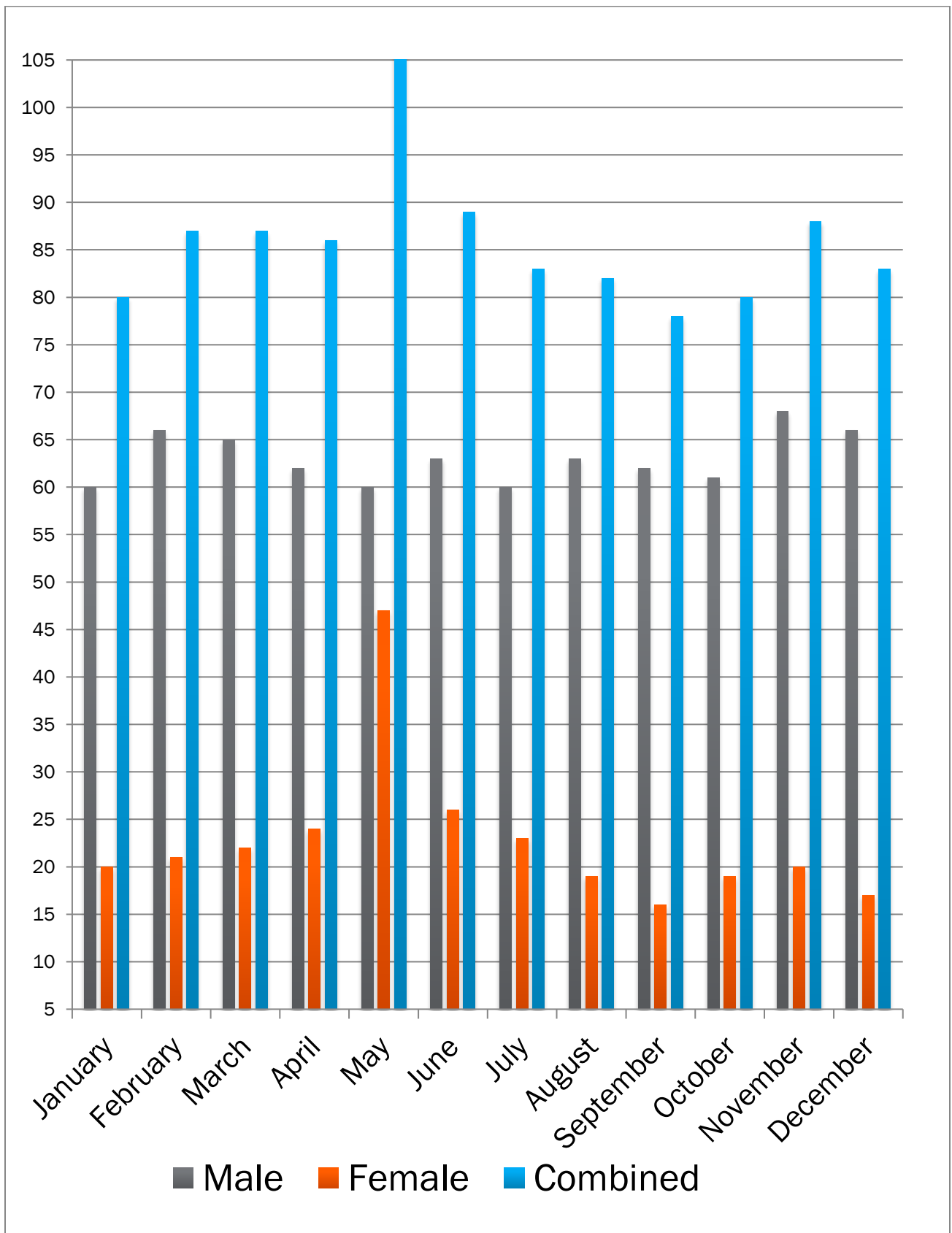


34,836.5 Hours Completed in 2016

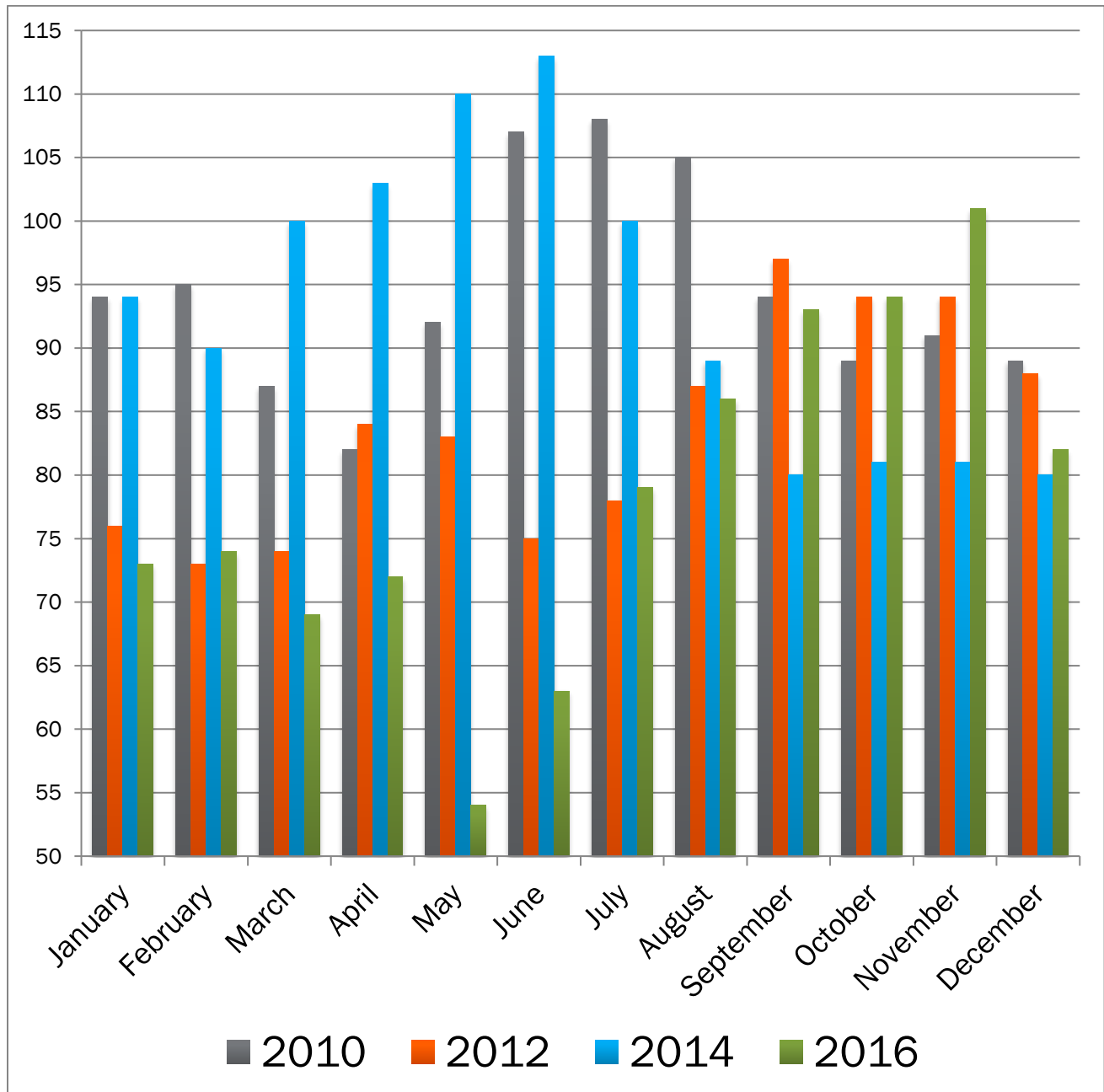
Number of Incarcerated Men and Women (Including out of county defendants) by Month



Jail Population 2016



Total Population of Incarceration 2010, 2012, **2014, 2016**



2016 EXPENSES AND COST SAVINGS

Direct Cost Savings.

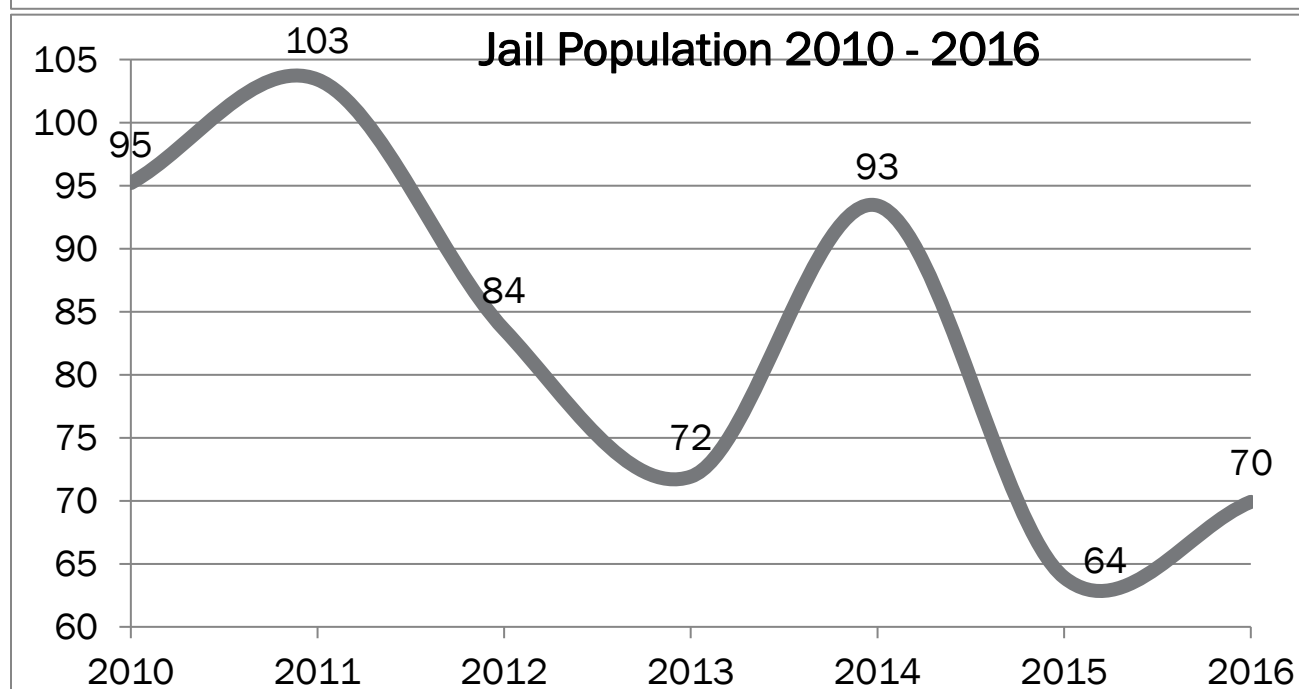
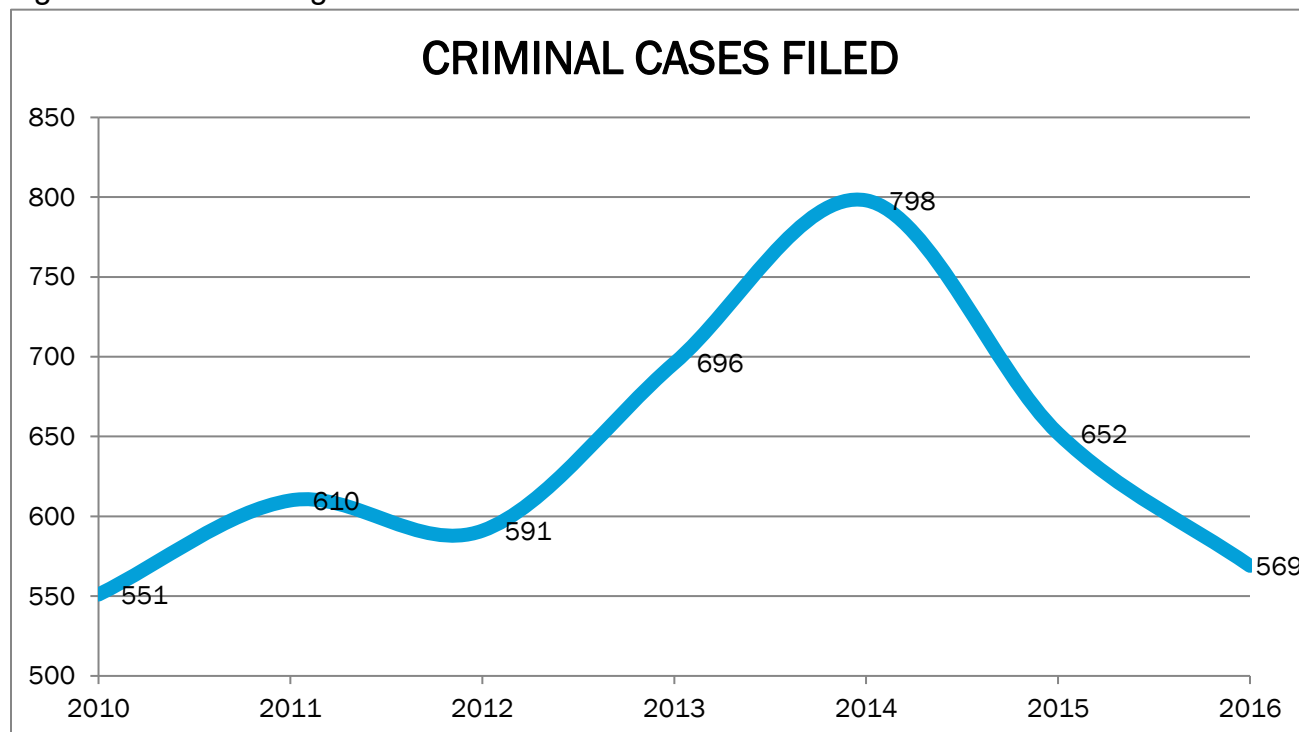
Incarceration costs money. The daily per diem rate to house an inmate in a County facility is estimated at \$73.00 (food, clothing, health care, etc.). As the graphs and statistical information (on the next page) reflect the jail population has dramatically decreased after the initiation of the 3g program. The 3g program may not be the only reason that the jail numbers have been reduced – even in years where case filings have increased – but it is a significant reason our jail population has declined. If Jail beds are reduced by 20 that is a daily savings of \$1,460.00 ($\$73 \times 20 = \$1,460$) – which will be an annual savings of \$532,900 ($\$1,460 \times 365 = \$532,900$). Further, the reduction in jail beds allows the county to lease open beds to other counties at a rate of \$73.00. At 10 beds rented daily that is income to the County of \$730.00 daily ($\$73.00 \times 10 = \730.00) – which will be an annual savings of \$266,450.00 ($\$730.00 \text{ a day} \times 365 = \$266,450.00$).

Secondary Financial Benefits.

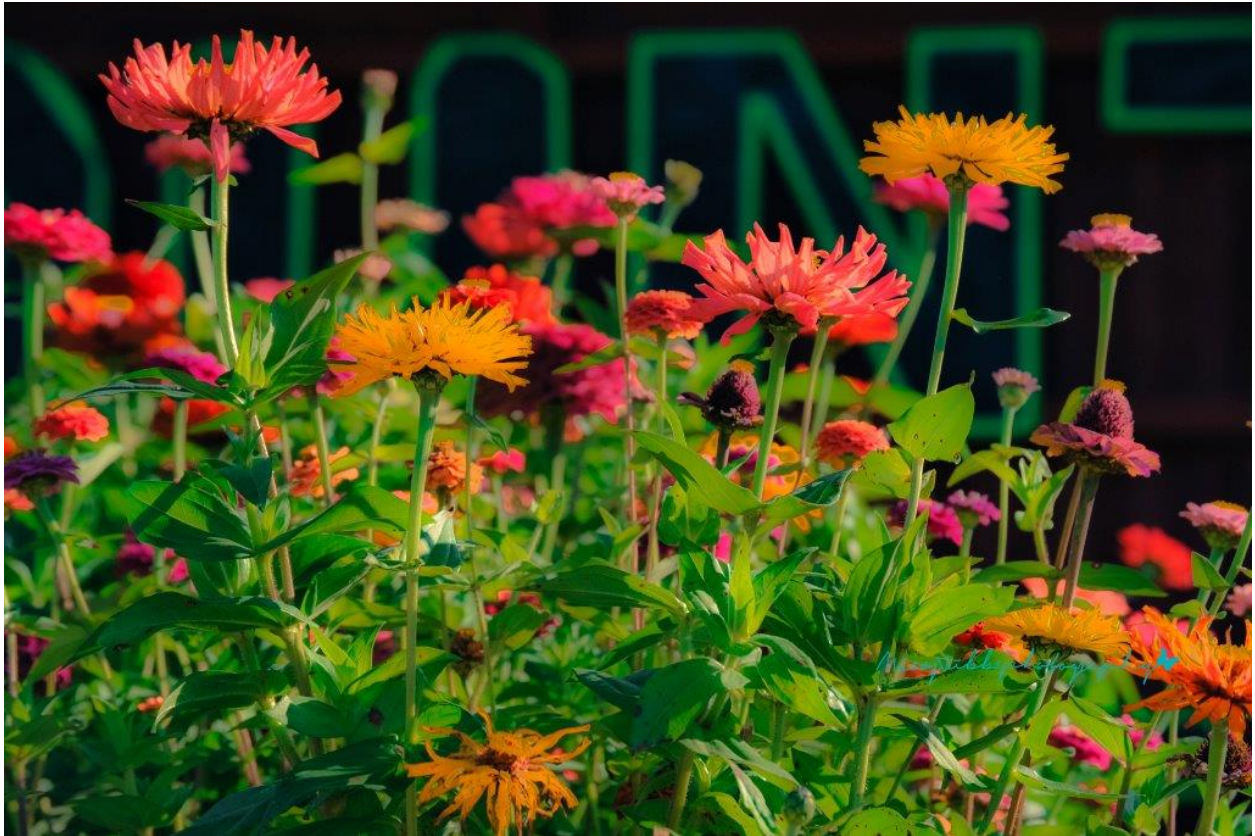
As reflected in the chart below the program is bringing in sufficient funds through donations for projects and produce to cover the cost of supplies. Therefore, outside the cost of staff the program is directly paying for itself.

STATISTICS SUPPORT THAT PROGRAM HAS REDUCED JAIL

POPULATION: As the two graphs below demonstrate, in 2010 the total number of misdemeanor and felony criminal cases filed was 551. It has been greater than 551 every year since. In fact, there was a spike in cases in 2013 and 2014. The population at the McKean County Jail has been lower every year since 2011, the year the program was implemented. **In 2016 the average population was 70, which is 33 lower than 2011, the year the program started - a 32% decrease!** Although it is not the only reason for the decline in jail population, the 3G Community Service Program is a significant contributing factor for this reduction.



Non-Financial Benefits.



What is the benefit of a hard day's work, picking cucumbers that came from seeds that you planted in the spring - realizing where food actually comes from, or, maintaining a trail that you later take your young son and daughter on for a walk to the stream? Each year we strive to improve our methods to plant and build and rehabilitate those that participate in the program. We have successes and failures - but there are definite financial and non-financial benefits for our participants and citizens.

Community Service Account

2024 Year End Totals

Donations

Wood Products	\$ 1,874.00
Fresh Produce	+ 1,278.00
Metal/cans	+ 2,676.00
Total	\$ 5,828.00

Expenses Paid with Donations

Seeds	\$ 436.10
Lumber	\$1,242.41
Blocks	\$ 850.21
Planting Supplies	\$ 816.41
Dumpster	\$1,374.60
Equipment	\$ 215.17
Gravel	+ \$ 380.56
Total	\$5,315.46

Donations	\$5,828.00
------------------	-------------------

Expenses	\$5,315.46
-----------------	-------------------

Bank Balance	\$12,170.71
---------------------	--------------------

LOOKING AHEAD AND ENDING NOTE

We will continue to maintain the projects we have already adopted and completed, like our big three gardens (Barn, 219 and Fairgrounds gardens) landscaping at the Courthouse. And we will continue our focus to instill in our participants a sense of pride and accomplishment that will assist them in their rehabilitation. Here are a few of 2024 participants' comments:

Michael: “driving by the Route 219 garden, look at how beautiful it is. I never thought I could do something like that.”

Harold: “I learned a lot of carpentry skills. I was there in the winter and built several nice items. I was proud to have completed them and they turned out pretty good.”

James: “My experience at the garden was great. I learned a lot about gardening and I can see the benefits of having a garden. I loved seeing how the vegetables grew.”

Many participants stop by after they have left the program to say hello, see what's growing and literally show their family something positive and beneficial they completed.



“Where flowers bloom so does hope.” Lady Bird Johnson