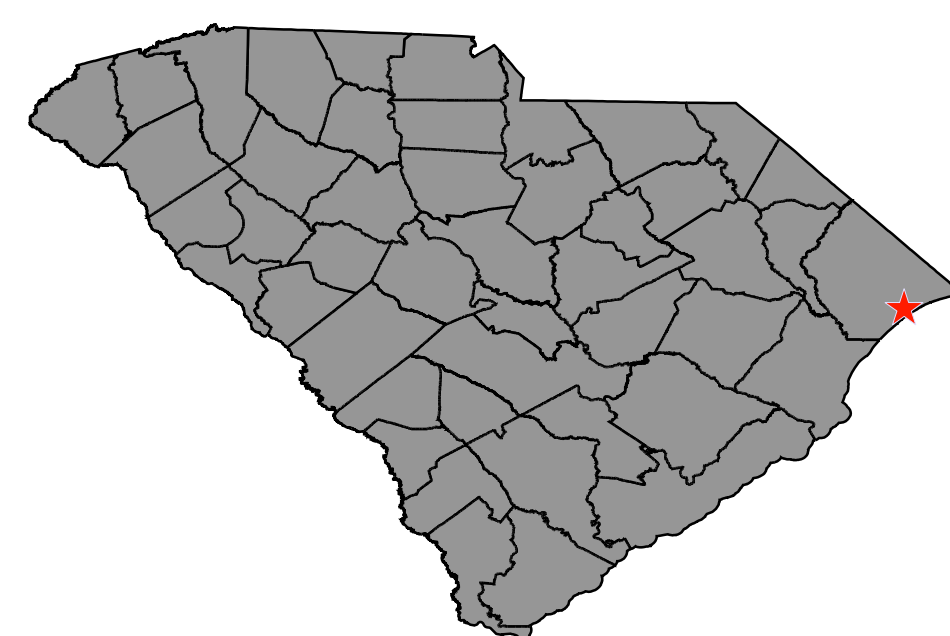


## CONCEPTUAL CORRIDOR SAFETY IMPROVEMENTS

### S-26-215 (MR. JOE WHITE AVENUE)

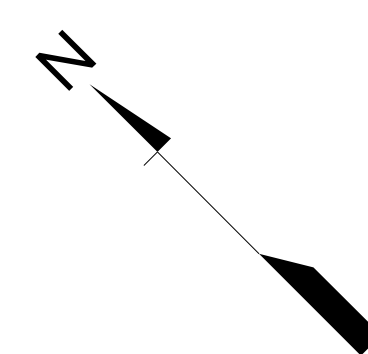
#### Project Location HORRY COUNTY



#### Map Legend

- EXISTING ROADWAY
- PROPOSED CONCRETE
- EXISTING RIGHT OF WAY
- EXISTING PROPERTY LINE
- PROPOSED TURN ARROWS
- PROPOSED CROSSWALK
- PROPOSED BIKE LANE MARKINGS
- PROPOSED BIKE LANE COLORED PAVEMENT
- PROPOSED DETECTABLE WARNING SURFACE

IMPROVEMENTS AT EACH TRAFFIC SIGNAL INCLUDE:  
 -LEADING PEDESTRIAN INTERVALS TO PRIORITIZE PEDESTRIANS ENTERING THE INTERSECTION AND REDUCE CONFLICTS  
 -RETROREFLECTIVE BACKPLATES TO IMPROVE SIGNAL HEAD VISIBILITY AND REDUCE SUN GLARE  
 -FLASHING YELLOW ARROW SIGNAL HEADS TO IMPROVE SAFETY DURING PERMISSIVE LEFT-TURNS



SCALE IN FEET  
 0 100 200 400

#### Contact Information

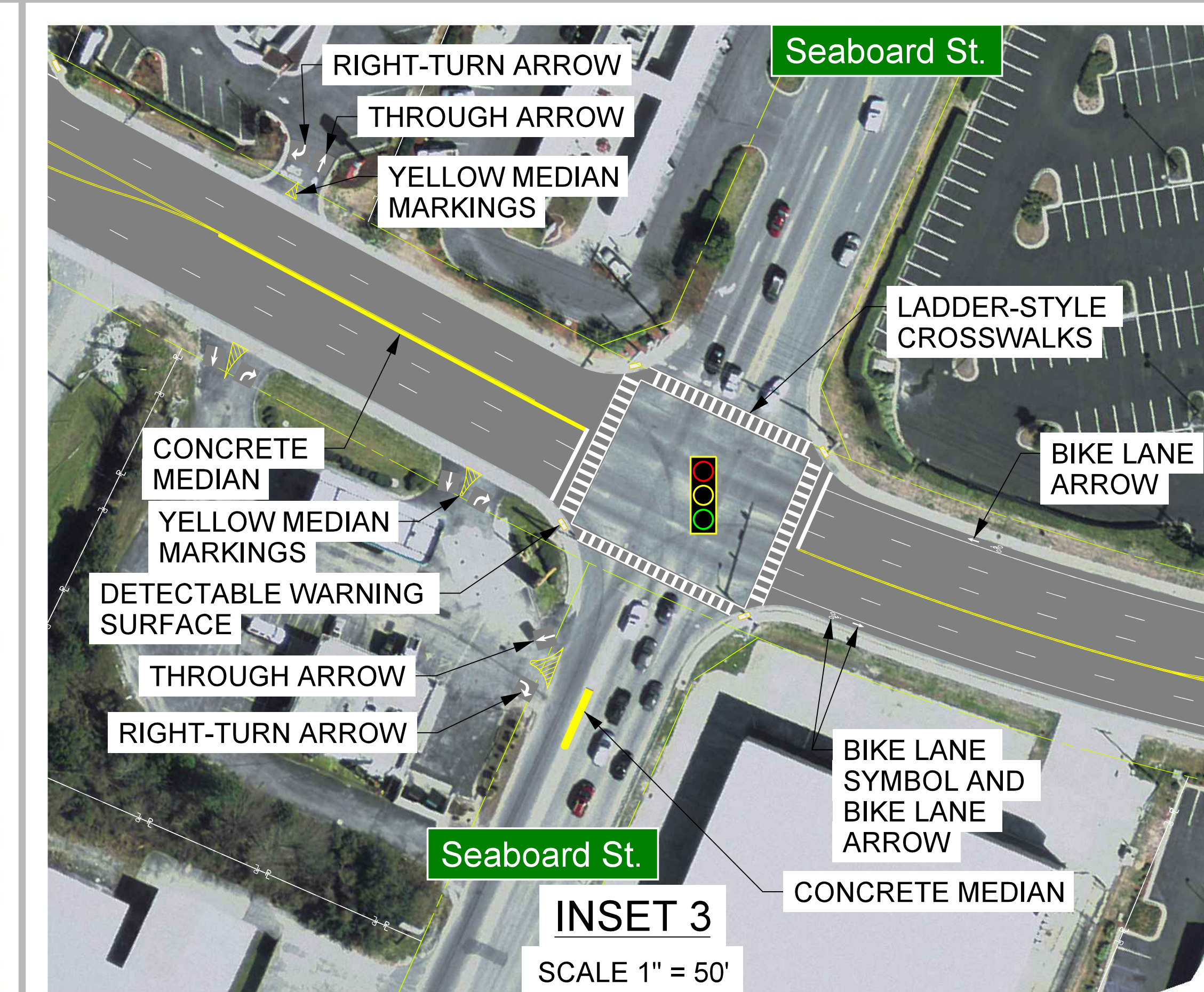
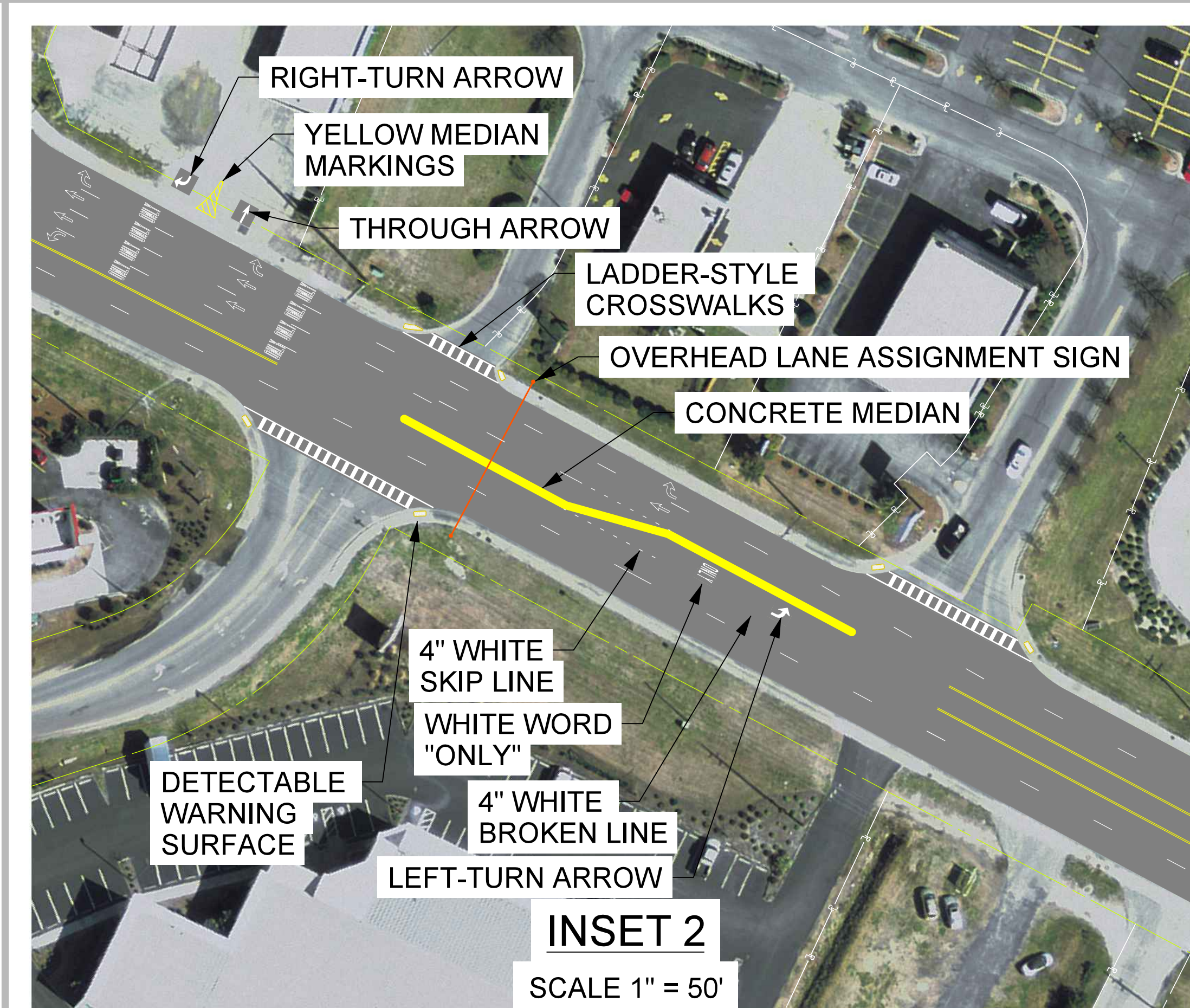
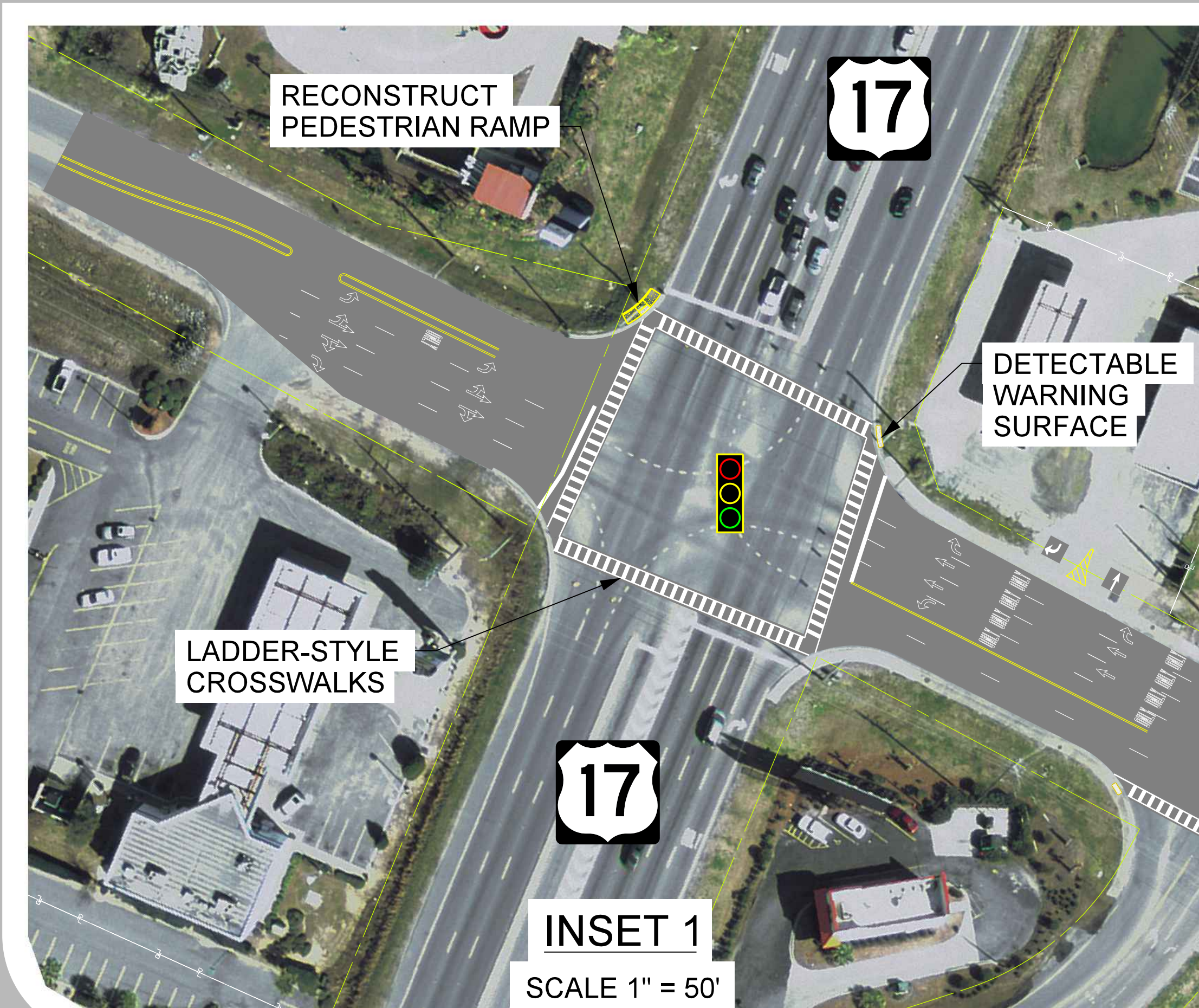
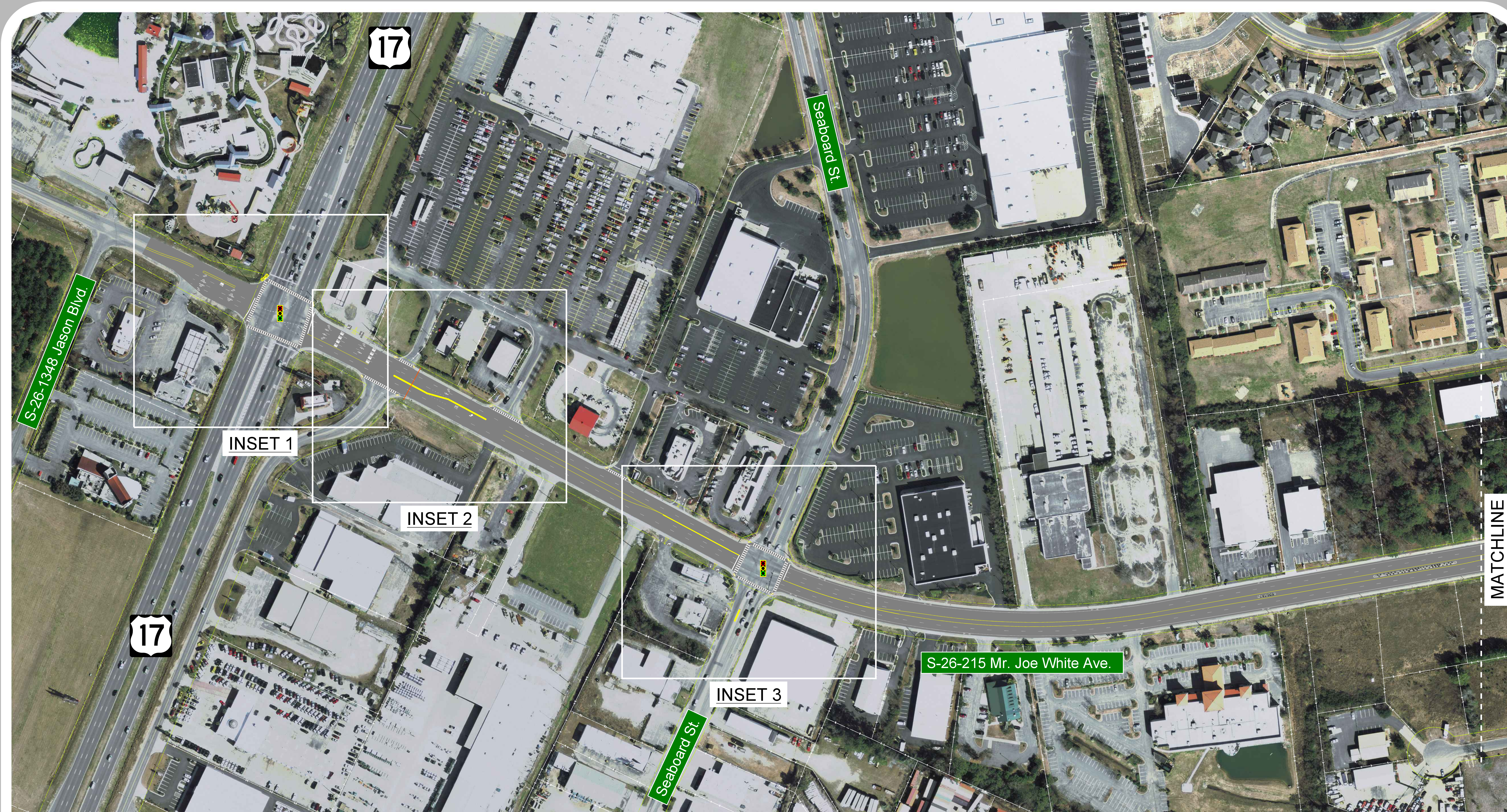
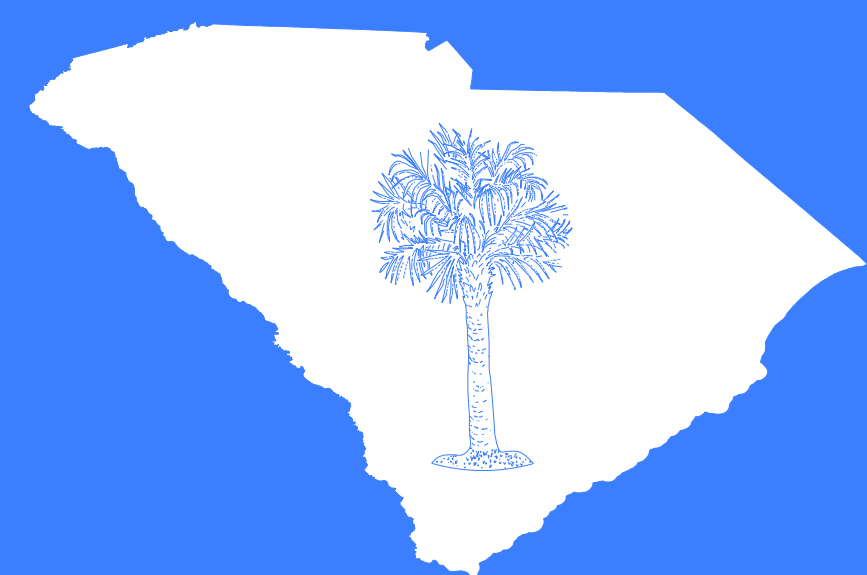
South Carolina Dept. of Transportation  
 955 Park Street  
 Columbia SC 29201

Questions/comments may be sent to:  
 Kaylon Meetze, SCDOT Safety Projects Manager  
 Phone: 803-737-2638  
 Email: MeetzeKR@scdot.org

Project Website:  
<https://scdotgis.online/>

#### Disclaimer

These displays are meant to show concepts for planning purposes only and are subject to change.

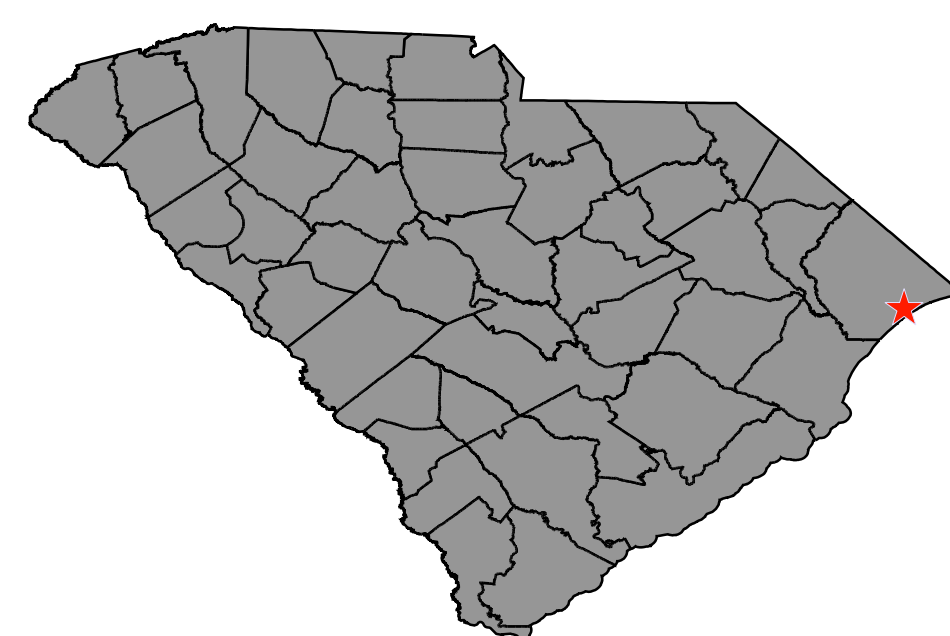




## CONCEPTUAL CORRIDOR SAFETY IMPROVEMENTS

### S-26-215 (MR. JOE WHITE AVENUE)

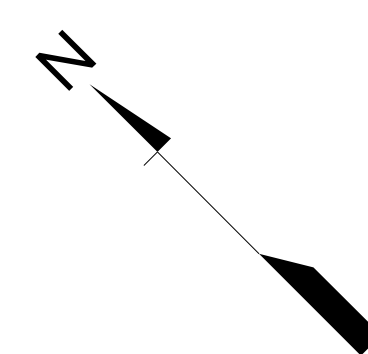
#### Project Location HORRY COUNTY



#### Map Legend

- EXISTING ROADWAY
- PROPOSED CONCRETE
- EXISTING RIGHT OF WAY
- EXISTING PROPERTY LINE
- PROPOSED TURN ARROWS
- PROPOSED CROSSWALK
- PROPOSED BIKE LANE MARKINGS
- PROPOSED BIKE LANE COLORED PAVEMENT
- PROPOSED DETECTABLE WARNING SURFACE

IMPROVEMENTS AT EACH TRAFFIC SIGNAL INCLUDE:  
 -LEADING PEDESTRIAN INTERVALS TO PRIORITIZE PEDESTRIANS ENTERING THE INTERSECTION AND REDUCE CONFLICTS  
 -RETROREFLECTIVE BACKPLATES TO IMPROVE SIGNAL HEAD VISIBILITY AND REDUCE SUN GLARE  
 -FLASHING YELLOW ARROW SIGNAL HEADS TO IMPROVE SAFETY DURING PERMISSIVE LEFT-TURNS



SCALE IN FEET  
 0 100 200 400

#### Contact Information

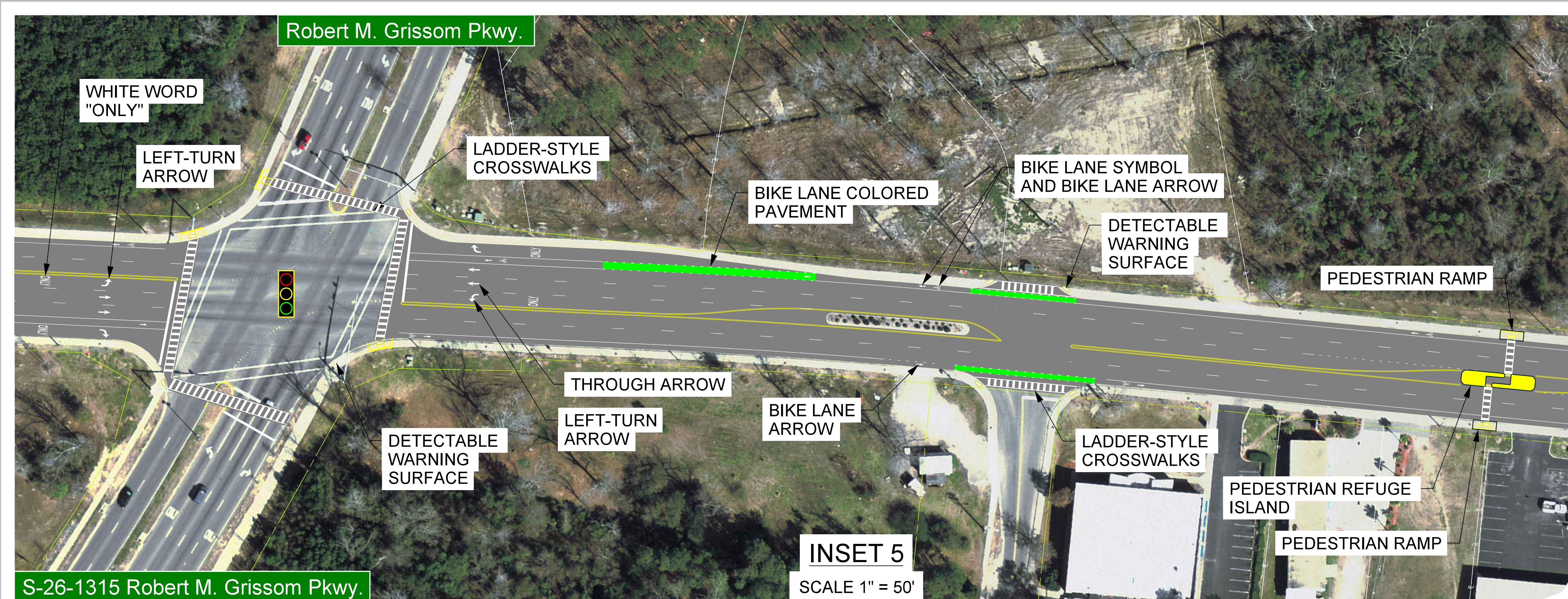
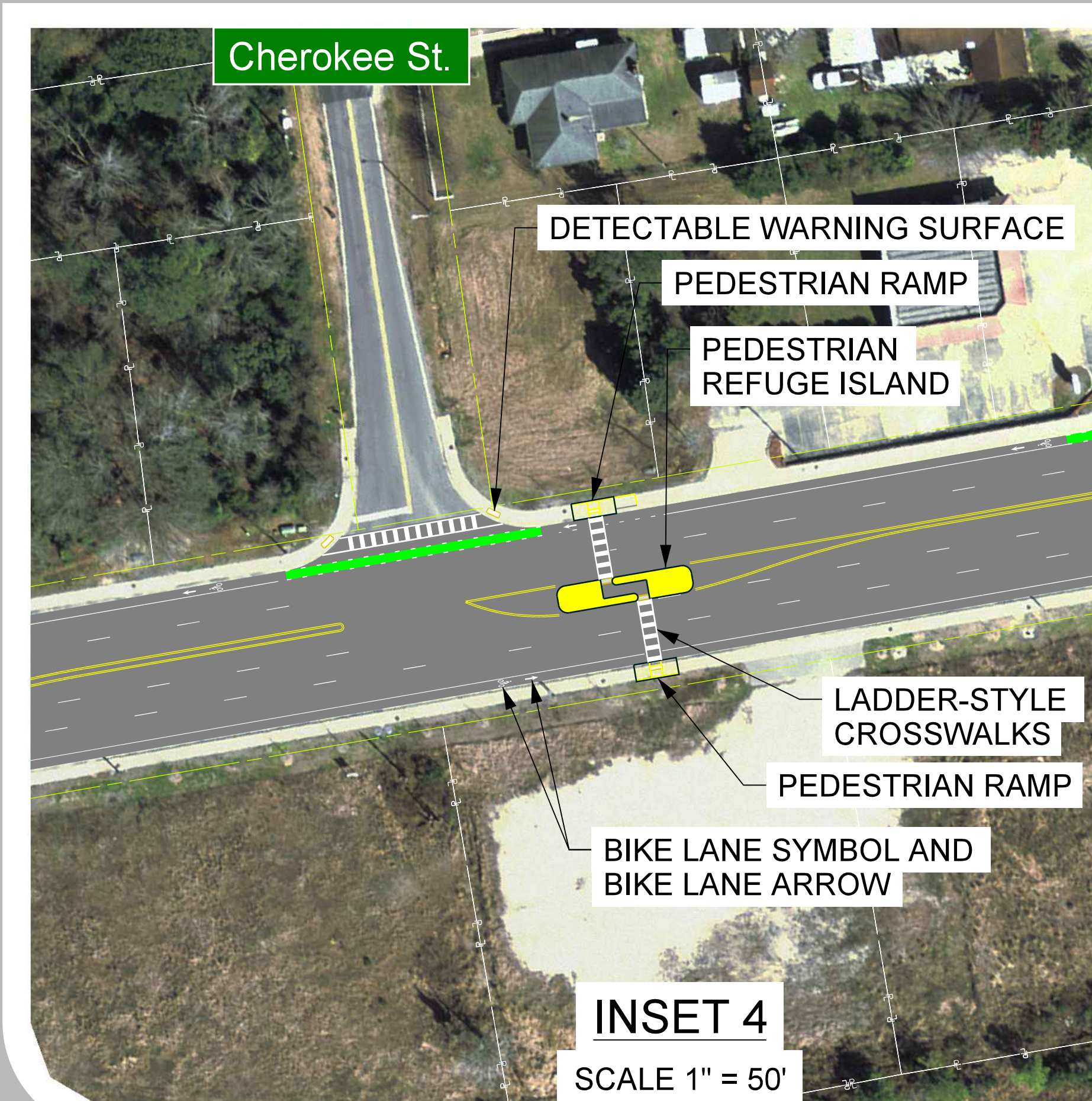
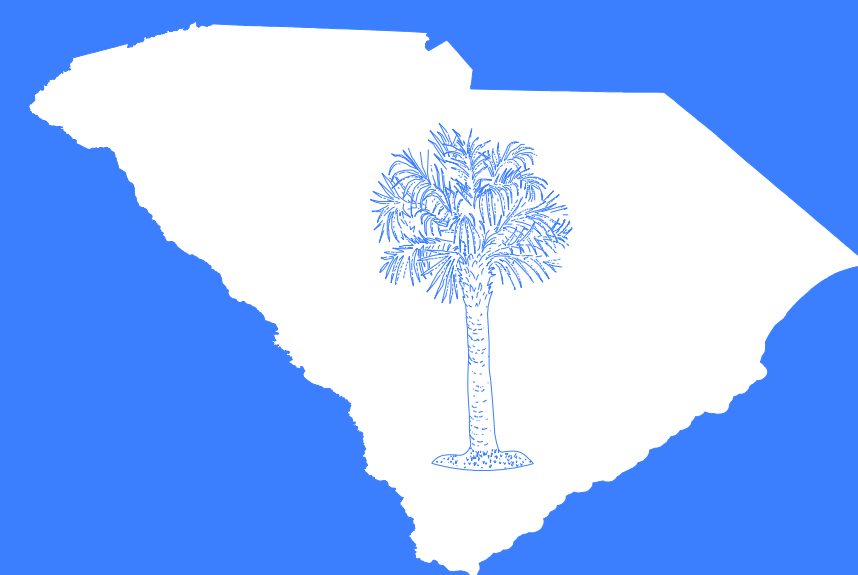
South Carolina Dept. of Transportation  
 955 Park Street  
 Columbia SC 29201

Questions/comments may be sent to:  
 Kaylon Meetze, SCDOT Safety Projects Manager  
 Phone: 803-737-2638  
 Email: MeetzeKR@scdot.org

Project Website:  
<https://scdotgis.online/>

#### Disclaimer

These displays are meant to show concepts for planning purposes only and are subject to change.

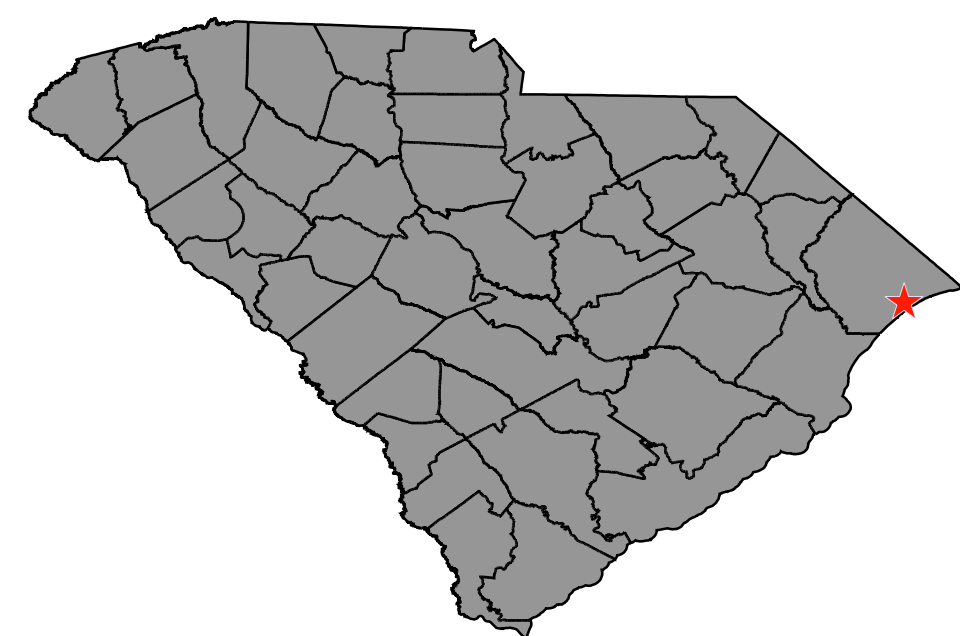













# CONCEPTUAL CORRIDOR SAFETY IMPROVEMENTS

## S-26-215 (MR. JOE WHITE AVENUE)

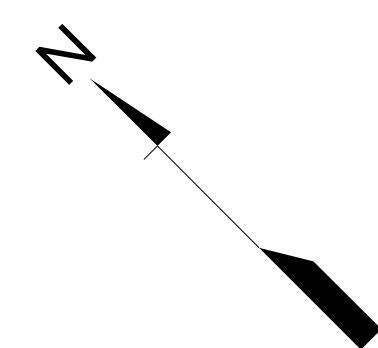
### Project Location HORRY COUNTY



### Map Legend

-  EXISTING ROADWAY
-  PROPOSED CONCRETE
-  EXISTING RIGHT OF WAY
-  EXISTING PROPERTY LINE
-  PROPOSED TURN ARROWS
-  PROPOSED CROSSWALK
-  PROPOSED BIKE LANE MARKINGS
-  PROPOSED BIKE LANE COLORED PAVEMENT
-  PROPOSED DETECTABLE WARNING SURFACE

IMPROVEMENTS AT EACH TRAFFIC SIGNAL INCLUDE:  
 -LEADING PEDESTRIAN INTERVALS TO PRIORITIZE PEDESTRIANS ENTERING THE INTERSECTION AND REDUCE CONFLICTS  
 -RETROREFLECTIVE BACKPLATES TO IMPROVE SIGNAL HEAD VISIBILITY AND REDUCE SUN GLARE  
 -FLASHING YELLOW ARROW SIGNAL HEADS TO IMPROVE SAFETY DURING PERMISSIVE LEFT-TURNS



SCALE IN FEET  
 0 100 200 400

### Contact Information

South Carolina Dept. of Transportation  
 955 Park Street  
 Columbia SC 29201

Questions/comments may be sent to:  
 Kaylon Meetze, SCDOT Safety Projects Manager  
 Phone: 803-737-2638  
 Email: MeetzeKR@scdot.org

Project Website:  
<https://scdotgis.online/>

### Disclaimer

These displays are meant to show concepts for planning purposes only and are subject to change.

