

Paper (not plastic) bags required for curbside yard waste pickup

Leaves, clippings and other loose yard waste must be placed in paper bags for curbside pickup in Myrtle Beach.

The Horry County Solid Waste Authority is only accepting yard waste in paper bags so that it can be composted, which saves valuable space in the landfill.

Home stores carry paper bags just for this purpose. You can still put limbs by the curb, but leaves, etc., must be in paper bags.



Myrtle's Market features fresh produce and handmade goodies



Looking for homegrown fruits and vegetables? How about handmade crafts and homemade desserts? Local farmers, crafters and others are ready to please three days a week at Myrtle's Market, corner of Mr. Joe White Avenue and North Oak Street.

The farmers' market is a staple for locals, offering seasonal produce and specialty items you can't find other places. Local artists also offer an array of crafts. Myrtle's Market is in its 17th year serving local residents and visitors.

The market is open Wednesday, Friday and Saturday from 9:00 a.m. to 3:00 p.m., through October. For more information, call Troy Marron at 843-918-4906.

Rail cars ready for use at Depot

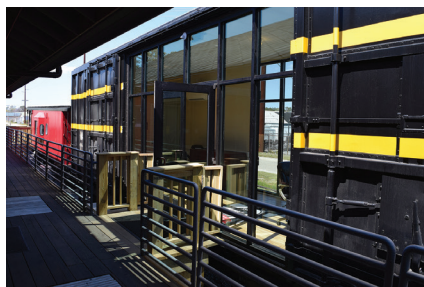
Myrtle Beach's Train Depot has two new spaces for your meeting and event needs that complement the historic National Register building.

A renovated boxcar has been turned into a meeting room, complete with glass windows, a conference table, restroom and computer display capability. The red caboose is now a catering kitchen, complete with warming and refrigeration options.

Both of the railcars are available for rent, either with the Depot or separately. Rates were adjusted slightly with the new amenities. The Depot itself rents for \$75 an hour for city residents or \$125 an hour for non-residents.

The boxcar meeting room rents for \$50 an hour for city residents or \$75 an hour for non-residents. The caboose kitchen rents for a flat \$150 for either residents or non-residents.

To inquire about rentals, contact Blake Goss at 843-918-4906. The Train Depot is a popular venue for celebrations and parties.



2019 Activities and Events

Coastal Sounds Oceanfront Concert
11 a.m. to 11 p.m., Saturday, August 3
Burroughs & Chapin Pavilion Place

Concert of Hope
Saturday, August 17
Burroughs & Chapin Pavilion Place

Waves of Praise Gospel Festival
Friday and Saturday, September 6-7
Burroughs & Chapin Pavilion Place

Myrtleween
11 a.m. to 11 p.m., Saturday, October 26
Burroughs & Chapin Pavilion Place

South Carolina's Largest Garage Sale
7 a.m. to 2 p.m., Saturday, October 5
Myrtle Beach Convention Center

Myrtle Beach Seafood Festival
Friday-Sunday, November 1-3
Valor Memorial Garden

Myrtle Beach Municipal Election
Tuesday, November 5

Goodbye 2019 New Year's Eve Celebration
Tuesday, December 31, 2019
Plyler Park and the Boardwalk

PROGRESS REPORT Summer 2019

CITY COUNCIL MEMBERS

Brenda Bethune, Mayor
Michael Chestnut, Mayor Pro Tem
Jackie Hatley
Mary Jeffcoat
Mike Lowder
Philip Render
Gregg Smith

PUBLISHER

John Pedersen, City Manager

EDITOR

Mark Kruea, Public Information Director
info@cityofmyrtlebeach.com
843-918-1014

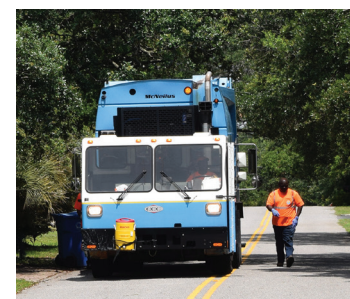
P. O. Box 2468
Myrtle Beach, SC 29578

www.cityofmyrtlebeach.com

PROGRESS REPORT

Solid waste fees increasing to serve rapid residential growth

As part of the new budget for Fiscal Year 2019-20, solid waste fees for residential customers will climb a total of \$4.75 per month. Most of the increase is to provide for six new staff members and four new collection trucks to serve the rapidly growing residential population in Myrtle Beach.



The monthly cost for solid waste services will rise from \$26.05 to \$30.80 beginning with August utility bills. For that price, our residential customers receive weekly pickup of garbage, recycling, bulky junk and yard waste.

In the last few years, the city has welcomed more than 750 new single-family homes, thanks to growth in the Market Common area, Grande Dunes and other places. The city's Solid Waste staff has been working extra to provide service to these new areas. The additional crew will allow for another full collection route each day.

Ready for hurricane season?

Myrtle Beach's recent brushes with a couple of Category 1 storms should remind everyone that hurricane season runs through November 30.

Hurricane Florence threatened our region as a much stronger storm before slowing to a crawl and flooding large portions of the Carolinas. Fortunately, the coast itself received little damage from winds and waves, but residents and businesses were ready for the worst.

The first step is to "know your zone" and be prepared to act if a hurricane threatens. Have important papers ready, prepare an emergency kit and know where you'll go in an evacuation. Evacuation routes are posted on www.cityofmyrtlebeach.com, along with other hurricane-related safety tips.

Include enough supplies in your hurricane kit for all family members to have a minimum of three days' food, water, medicine and supplies. Do not forget your pets! Have an evacuation plan for them, too. Of course, batteries and flashlights are vital.

When the time comes, be sure to fill the car with gas and have plan to check in with relatives when you get to your destination.



A rebuilt dune crossover at 74th Avenue North

Keeping the dune crossovers new

Each year, the City of Myrtle Beach budgets \$200,000 to rebuild half a dozen or more dune crossovers, to make sure they are safe and attractive.

Where space allows, the updated crossovers provide improved access and better amenities.

Pictured here are two of six dune crossovers that were rebuilt this winter. At top is the new crossover at 74th Avenue North. Below is the crossover at 13th Avenue South.



Boardwalk extends another block north

Myrtle Beach's oceanfront boardwalk has grown from 15th to 16th Avenue North, thanks to construction of the Hilton Enclave in that block. The new hotel paid for the boardwalk extension, shown here, to provide connectivity with Plyler Park and other amenities.



<https://www.facebook.com/myrtlebeachcitygovernment>



Phase 2 expansion opens at Savannah's Playground

Myrtle Beach's most unique playground has grown to include more features and excitement for children of all abilities. Phase 2 of Savannah's Playground opened in late June with \$400,000 worth of new equipment. A portion of the expansion is shown above.

The now \$2 million playground is adjacent to the city's Crabtree Memorial Gymnasium, across the lake from The Market Common. This year's improvements will include a fence around the pond.

Other recent improvements include four permanent restrooms and a water fountain and bottle-refilling station. The restrooms are handicapped-accessible, and all have changing stations.

New Futrell Park Pier named for Crain Woods



The City of Myrtle Beach recently replaced the fishing pier at Futrell Park off Mr. Joe White Avenue and named the structure in honor of the late Crain Woods. A longtime resident and well-known teacher, Woods served two terms on Council, from 1991 to 2000.

He was instrumental in the development of Futrell Park, which is named for Myrtle Beach's first African-American City Council member, James Futrell. Woods also was an early advocate of stormwater mitigation efforts.



Mountain bike riders now have a new place to practice their skills. The Andre S. Pope Mountain Bike Trail is available at the southern end of the city's East Coast Greenway. Volunteers built the trail in early 2019, and it was named in recognition of Pope's longtime support and enthusiasm for mountain biking.

2019 Solid Waste Schedule

Labor Day Week (September 2-6)
Regular Monday-through-Thursday collection schedule.

Veterans Day Week (November 11-15)
Regular Monday-through-Thursday collection schedule.

Thanksgiving Week (November 25-29)
Service on Monday, Tuesday, Wednesday and Friday. No service on Thursday.

Christmas Week (December 23-27)
Service on Monday, Tuesday, Thursday and Friday. No service on Wednesday.

New Year's Week (December 30-January 3)
Regular Monday-through-Thursday collection schedule.

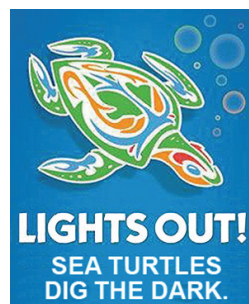
City departments play musical offices

Myrtle Beach's Human Resources and Planning Departments have switched places.

The Human Resources and Organizational Development staff is now on the first floor of City Hall, 937 Broadway Street.

Meanwhile, the Planning Department is occupying Human Resources' former space at the City Services Building, 921 North Oak Street.

The phone numbers are still the same. Call Human Resources at 843-918-1114 or Planning at 843-918-1050.



Turtle Time is May 1-October 31, and that means:

Turning out beachfront lights after dusk.

Not disturbing nesting females or hatchlings by using flashlights, lanterns or flash photos.

Filling in holes and removing beach chairs, umbrellas and sports equipment at day's end.



Sign up for the weekly **Friday Fax** email to receive news, events, meetings and agendas. Send your email address to info@cityofmyrtlebeach.com. Like and visit our Facebook page, too: www.facebook.com/myrtlebeachcitygovernment.

Paying city utility bills is quick

Need to make a payment in a hurry? See the Online Services page on the city's web site for the IVR Customer Portal, which allows a one-time payment without creating a user account. Already have a user account or want to create one? Then use the Utility E-Services method.

Or, call 844-571-2888 and use the free pay-by-phone feature, 24-hours a day. We also offer handy drop-off boxes, a drive-through window and automatic draft payment options, including paperless.

Myrtle Beach utility bills have a new look! As you can see below, your utility bill has been updated with an easier-to-read format. Also, the new system allows multiple bills to be mailed to the same address, eliminating duplicate mailings and duplicate return envelopes.

CITY OF MYRTLE BEACH
UTILITY BILLING DIVISION
Important Information On Reverse Side of Bill

P.O. Box 2468 • 921 N. Oak Street • Myrtle Beach, SC 29578-2468
(843) 918-1212
(800) 617-7758

Pay bill by phone @ 1-844-571-2888 or
Pay bill online @ www.cityofmyrtlebeach.com online services
or scan the QR code

MYRTLE BEACH SC 29578

Your 2019 Annual Water Quality Report is Now Available!
To view your 2019 Annual Water Quality Report and learn important information about the source and quality of your drinking water, go to <http://www.cityofmyrtlebeach.com>. For a translation of the water quality report, to speak with someone about the report, or to request a paper copy of the report, please call (843) 918-2000.

Billing Information
Service Period From: 5/01/2019 To: 5/28/2019
Meter ID: 000 000000 Serial #: 000 000000

Days
27 Previous Read 127

Service Address
000 000 ST
128 Gallons Used 1000

Bill Code
WSA

Account: 1-010-
Bill Date: 6/07/2019
Bill Due Date: 6/28/2019
Previous Balance: 45.20
Current Bill: 45.20
Amount Due: 45.20

Bill Due Date Applies Only To Current Bill

| Monthly Charges | Base Charge | Volume Charge | Total |
|-----------------|-------------|---------------|-------|
| Water | 2.85 | 1.53 | 4.38 |
| Sewer | 3.84 | 3.68 | 7.52 |
| Saniti/Recy | | | 18.15 |
| Tipp/Land | | | 5.90 |
| Container | | | 2.00 |
| Stormwater | | | 6.25 |
| GS Humane | | | 1.00 |

A late penalty is charged if payment is received after the DUE DATE. A payment received on the day the bill is printed may not be reflected on this bill.
Payment drop boxes are available 24 hours a day. Boxes are located at the City Services Building on 921 N. Oak Street.
The free standing box at the front of the building is for cash, check, or money order payments only. The other box located next to the drive-thru window can be used for cash, check, or money order payments.
PLEASE DO NOT DEPOSIT CASH PAYMENTS IN THE FREE STANDING BOX.
PLEASE RETURN LOWER PORTION OF STATEMENT IN THE ENCLOSED ENVELOPE.

Current Bill \$ 45.20

31st Garage Sale is October 5

South Carolina's Largest Garage Sale comes to the Myrtle Beach Convention Center on Saturday, October 5. The hours are 7:00 a.m. to 2:00 p.m., with a line usually waiting to get in when the doors open. Thousands of people enjoy searching among hundreds of vendors for that perfect cast-off or collectible.

Online registration for vendor spaces begins Monday, August 5. Visit the city's website and Facebook page for details. Admission to the sale is free. Parking is just \$5.00 per car for this event.



Picking up after your pet is required by law

The City of Myrtle Beach requires pet owners to pick up after their pets whenever they are off the owner's property. As the sign above says, you must pick up and properly dispose of your pet's waste.

Here are a few other pet-related rules. From May 1 through Labor Day each year, dogs are allowed on the beach only before 10:00 a.m. and after 5:00 p.m. At all times, they must be on a leash of seven feet or shorter, and you must pick up after them and properly dispose of the waste in a trash receptacle.

Violations of these rules are misdemeanors, subject to a fine of up to \$500 and/or 30 days in jail, upon conviction. Please be a responsible pet owner! The city offers free waste bags at many parks and public spaces.

What can I recycle?

Wondering what's recyclable? Here's a handy list of items that can be recycled in the city's rollout recycling carts. You do not have to separate recyclables.

- ♦ Aluminum and tin cans
- ♦ Plastic bottles and jugs (#1 through #7)
- ♦ Empty aerosol cans (with no caps)
- ♦ Glass bottles and jars
- ♦ Office paper, school paper and junk mail
- ♦ Corrugated cardboard and paper bags
- ♦ Catalogs, magazines and newspapers
- ♦ Paperback books and telephone books
- ♦ Rigid plastics
- ♦ Paper egg and milk cartons