

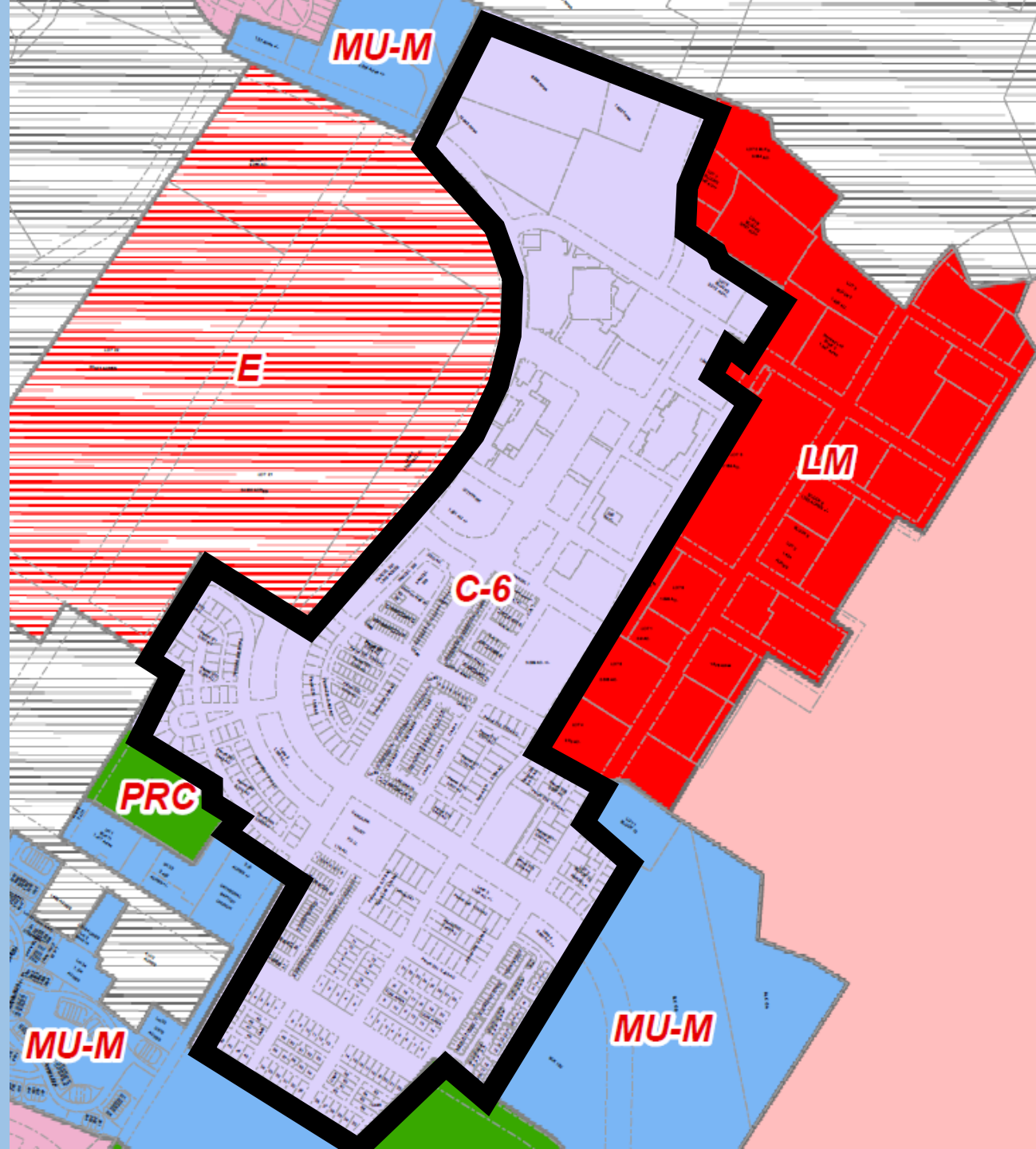
Myrtle Beach Sidewalk Café Ordinance Proposed Changes



Sidewalk
Café
Locations



Sidewalk Cafes



Currently Allowed in the C-6 District (Market Common)

Sidewalk Cafes



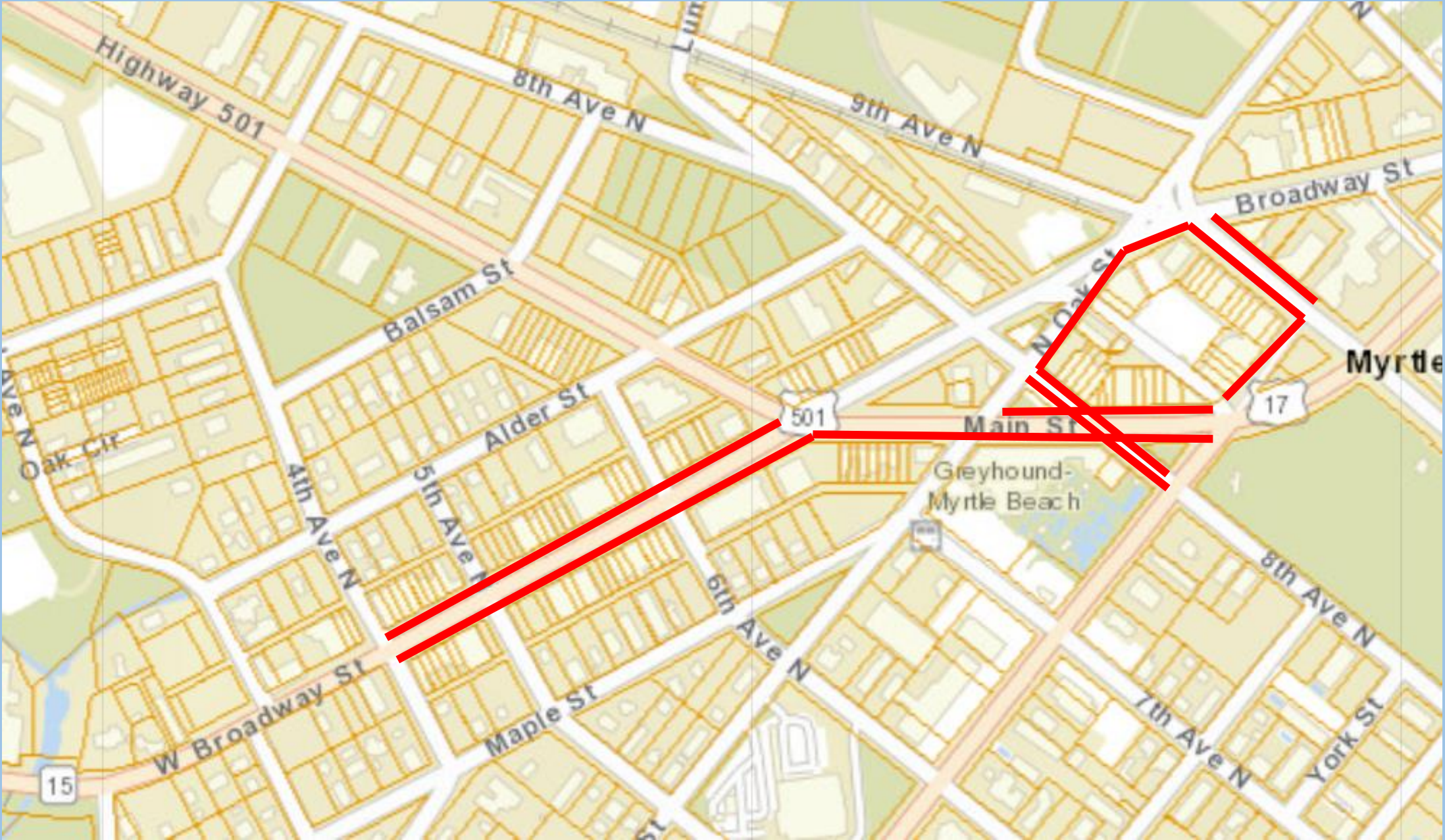
Currently Allowed Along the Boardwalk

Sidewalk Cafes

An aerial photograph of a city grid with yellow property lines. A thick purple line runs horizontally across the lower portion of the grid. Two blue lines run horizontally across the upper right portion of the grid. Two purple U-shaped brackets are positioned on the right side of the grid, one above the other, indicating specific areas.

Currently Allowed Along the Boardwalk
Proposed: Add Withers and Chester

ART and C-7 Districts: Currently Sidewalk-Specific



Rule Changes





Annual Fee:

Current \$500

Proposed \$50

The number of people permitted at any time within the sidewalk café area is limited to the number of seats authorized in the sidewalk café permit.



The number of people permitted at any time within the sidewalk café area is limited to the number of seats authorized in the sidewalk café permit.



Walk-up service windows are permitted, with or without a sidewalk café.

A que line shall be established so as to not interfere with the 5' clear pedestrian way.



The Director of Construction Services will consider prior calls for service or nuisance concerns in decisions to approve, deny, revoke, or suspend the permit.



Questions?

