

STORMWATER MANAGEMENT PLANNING

*Positively Influencing
Our Local Water Quality*

We VALUE water!



Drinking Water Resource



Recreational Uses

Atlantic Ocean & Intracoastal Waterway



OUR COASTAL WATERSHED

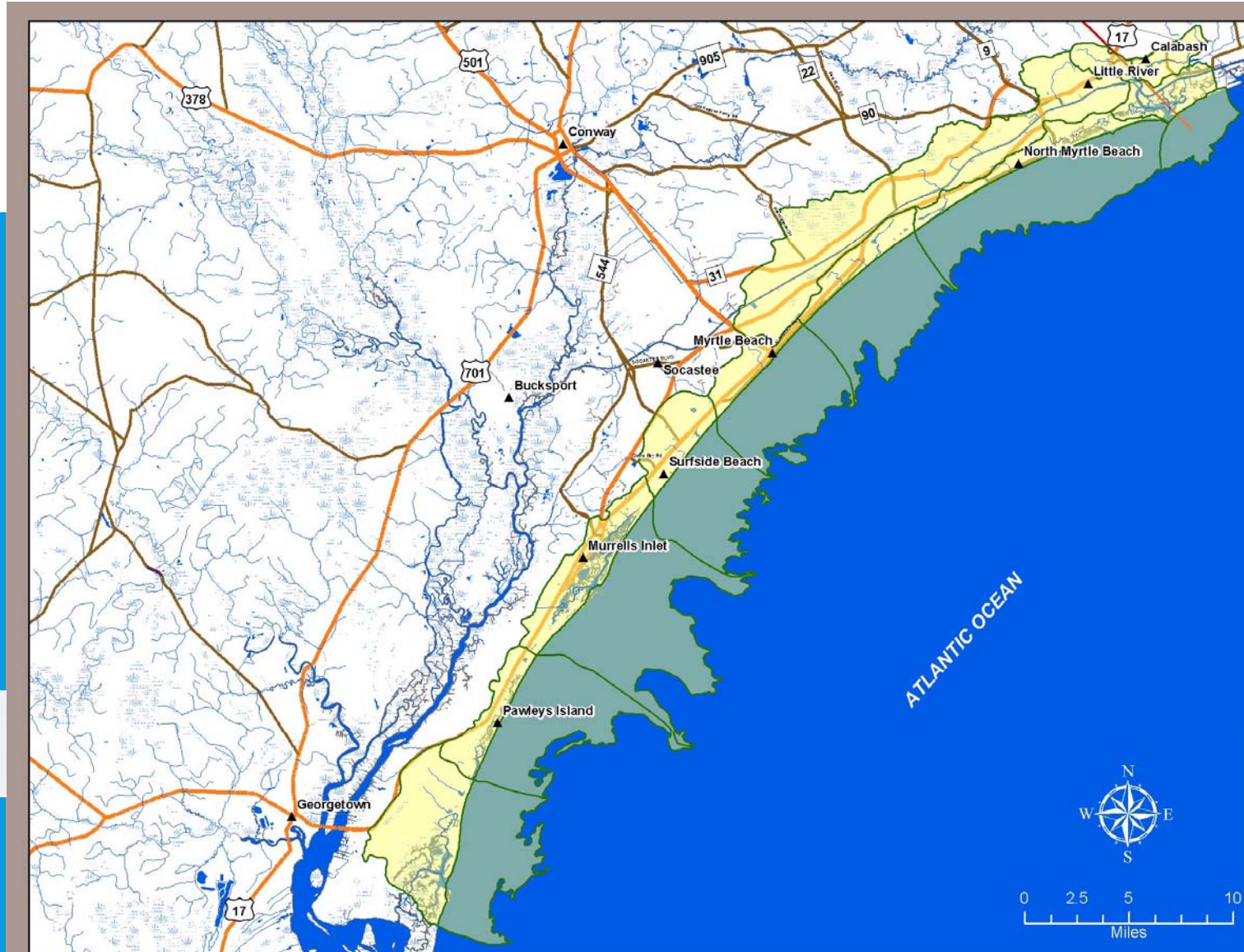
We are ALL Connected and Working Together!

- Municipalities
- Counties
- Regulatory Agencies



Coastal Waccamaw Stormwater Education Consortium
HELPING LOCAL GOVERNMENTS MEET REQUIREMENTS FOR STORMWATER EDUCATION AND PUBLIC INVOLVEMENT

CWSEC has been focused on regional collaboration of education and training efforts at the watershed scale since 2004.



Source: Waccamaw Watershed Academy, Coastal Carolina University

WHAT IS STORMWATER?



Stormwater runoff originates during rain events and generates flow across impervious surfaces and into private and public drainage facilities, which ultimately discharge into the Atlantic Ocean or Atlantic Intracoastal Waterway.

- ✓ Atlantic Intracoastal Waterway = Drinking Water Resource
- ✓ **No** chemical treatment is permitted by regulators aside from anionic polyacrylamides (PAM) used for controlling soil erosion and sedimentation on construction sites
- ✓ Implement flood control ordinances for construction activities, non-stormwater discharge detection and elimination programs, post-construction stormwater runoff control requirements, and best management practices in our local communities

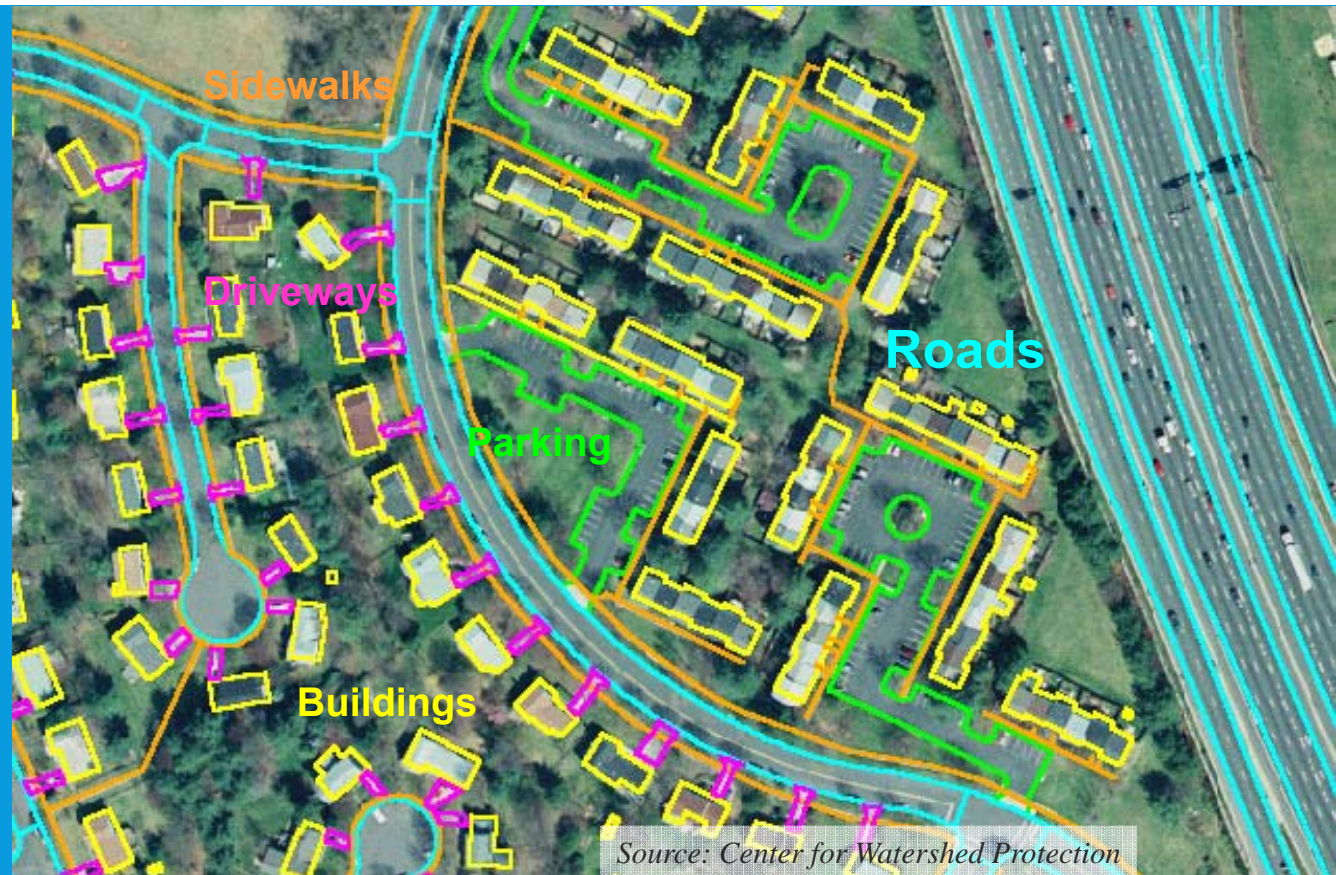
OUR URBAN LANDSCAPE

Common Impervious Surfaces:

- Roadways
- Parking Surfaces
- Buildings
- Driveways

During rain events:

- Land use directly affects local water quality
- Impervious surfaces generate a higher volume of stormwater runoff
- Rainwater transports common urban nonpoint source pollutants (sediment, pathogens from animal waste, nutrients from lawns, automotive fluids, pesticides, etc.)



Source: Center for Watershed Protection

STRENGTHENING OUR STORMWATER MANAGEMENT PROGRAM

Water Quantity and Water Quality Focus:

- Watershed-based Stormwater Master Plan Development
 - Public involvement to gather feedback on flooding, erosion, or pollutant concerns
 - Education of common sources of pathogens/bacteria
 - Perform engineering studies and use modeling tools to identify local retrofit alternative projects
- Recommend projects to program within our Capital Improvement Plan

