





BICYCLE REPAIR
STATION

RECONFIGURED ROAD
DEPARTMENT PARKING AREA

COURT GAMES
BASKETBALL/PICKLE BALL

SIDEWALK FROM
CAVA'S

PARK ENTRANCE
FEATURE

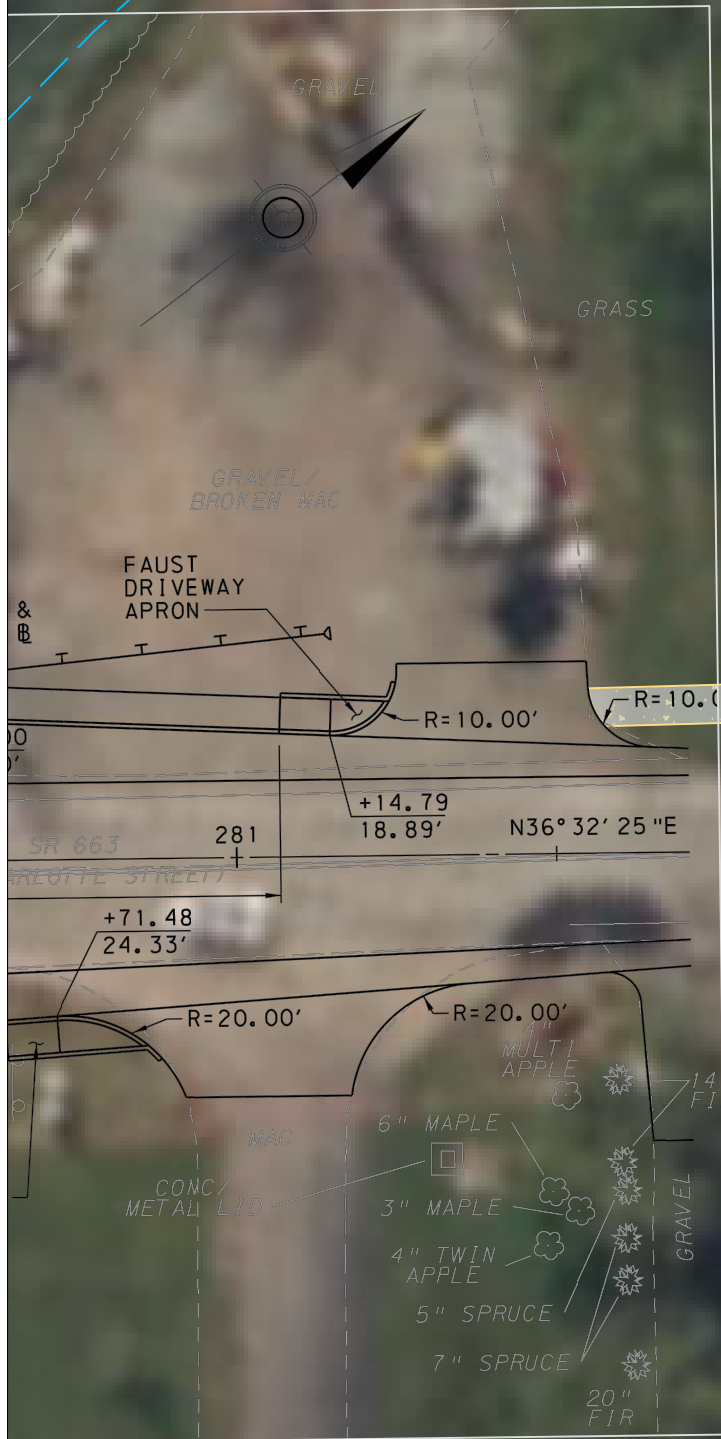
WET POND
STORMWATER FEATURE

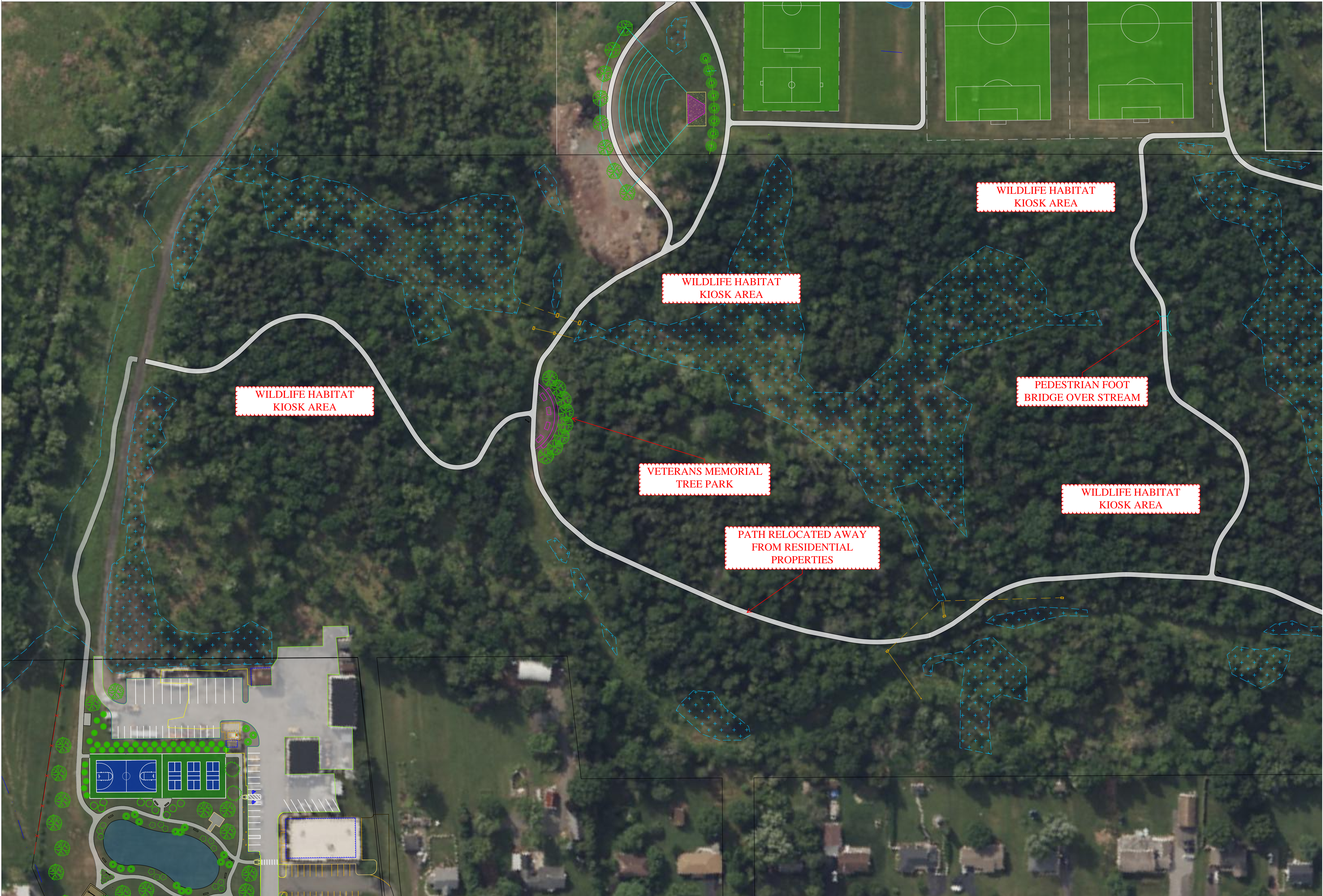
SMALL PICNIC GROVE

OVERFLOW
PARKING

RECONFIGURED
PARKING AREA

N. CHARLOTTE STREET





WILDLIFE HABITAT
KIOSK AREA

WILDLIFE HABITAT
KIOSK AREA

WILDLIFE HABITAT
KIOSK AREA

PEDESTRIAN FOOT
BRIDGE OVER STREAM

WILDLIFE HABITAT
KIOSK AREA

VETERANS MEMORIAL
TREE PARK

PATH RELOCATED AWAY
FROM RESIDENTIAL
PROPERTIES



POSSIBLE COMMUNITY
GARDEN IN FORMAL NURSERY
IRRIGATION AREA

IMPROVEMENTS FROM
HANOVER WOODS COMPLETED,
NEW DROP OFF AREA AND
PEDESTRIAN FACILITIES

UPGRADED PARKING AREA
(ASSISTANCE PLANNED FROM
TROTTER'S GATE)

RECONFIGU
RATION OF
EXISTING
SWM
FACILITIES

AMPITHEATHER WITH
BAND SHELTER/
SLEDDING HILL.
RELOCATION OF TWP
STOCKPILE AREA.

ADA ACCESS TO
SOCCER FIELDS. WITH
POTENTIAL FOR
BLEACHER PADS



RELOCATED ACCESS TO
NHT BASEBALL FIELDS/
WINDLESTRAE TRAIL

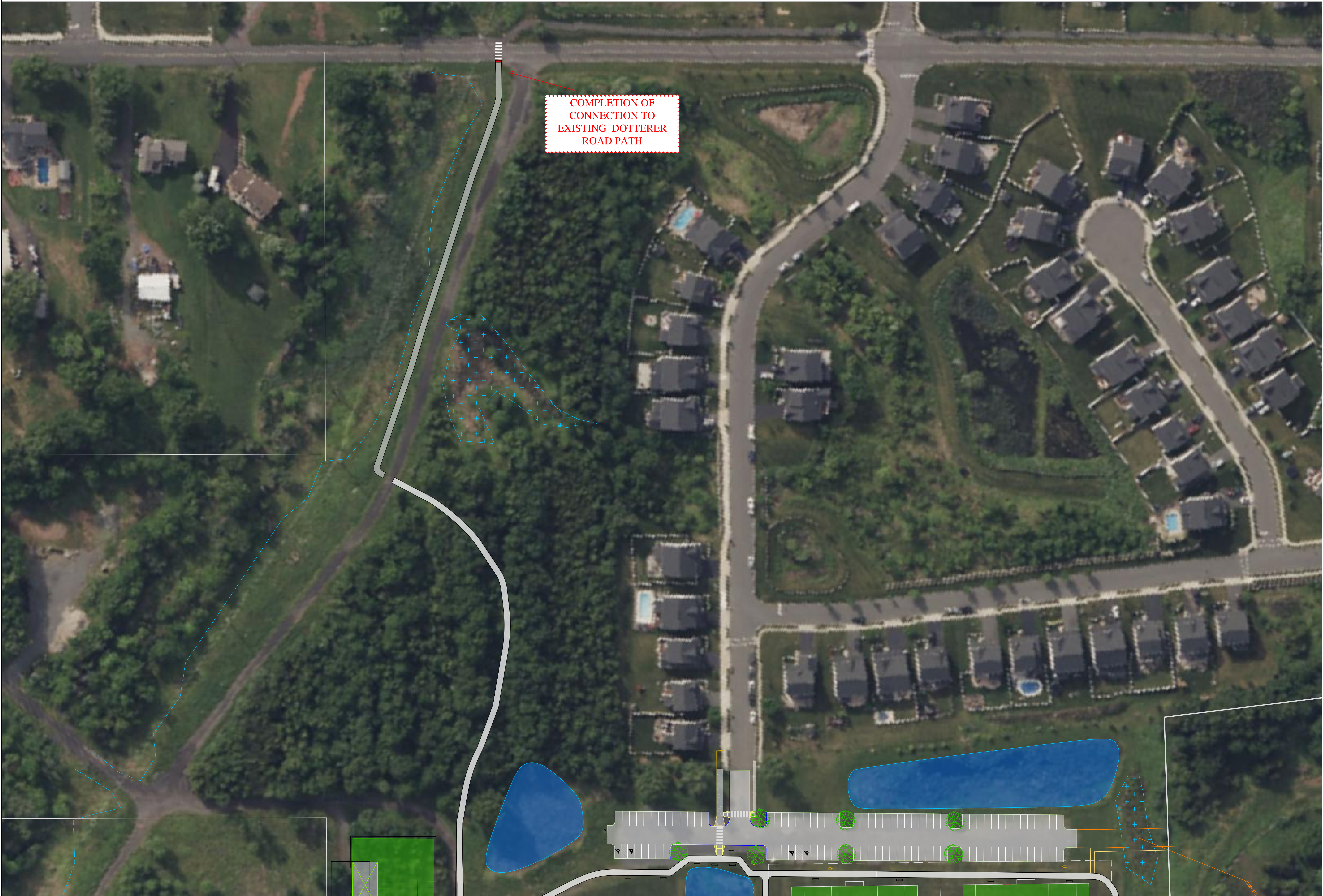
MAIN TRAIL CONNECTION
POINT - POSSIBLE
SCUPTURE GARDEN OR
REST STATION

DOTTERER ROAD

SMALL TRAILHEAD
PARKING AREA -
ACCESS AT SWAMP
PICNIC ROAD

FUTURE CONNECTION TO
PROVIDENT TRACT OR
OTHER PROJECTS ALONG
N.CHARLOTTE STREET

N.CHARLOTTE ST.



COMPLETION OF
CONNECTION TO
EXISTING DOTTERER
ROAD PATH