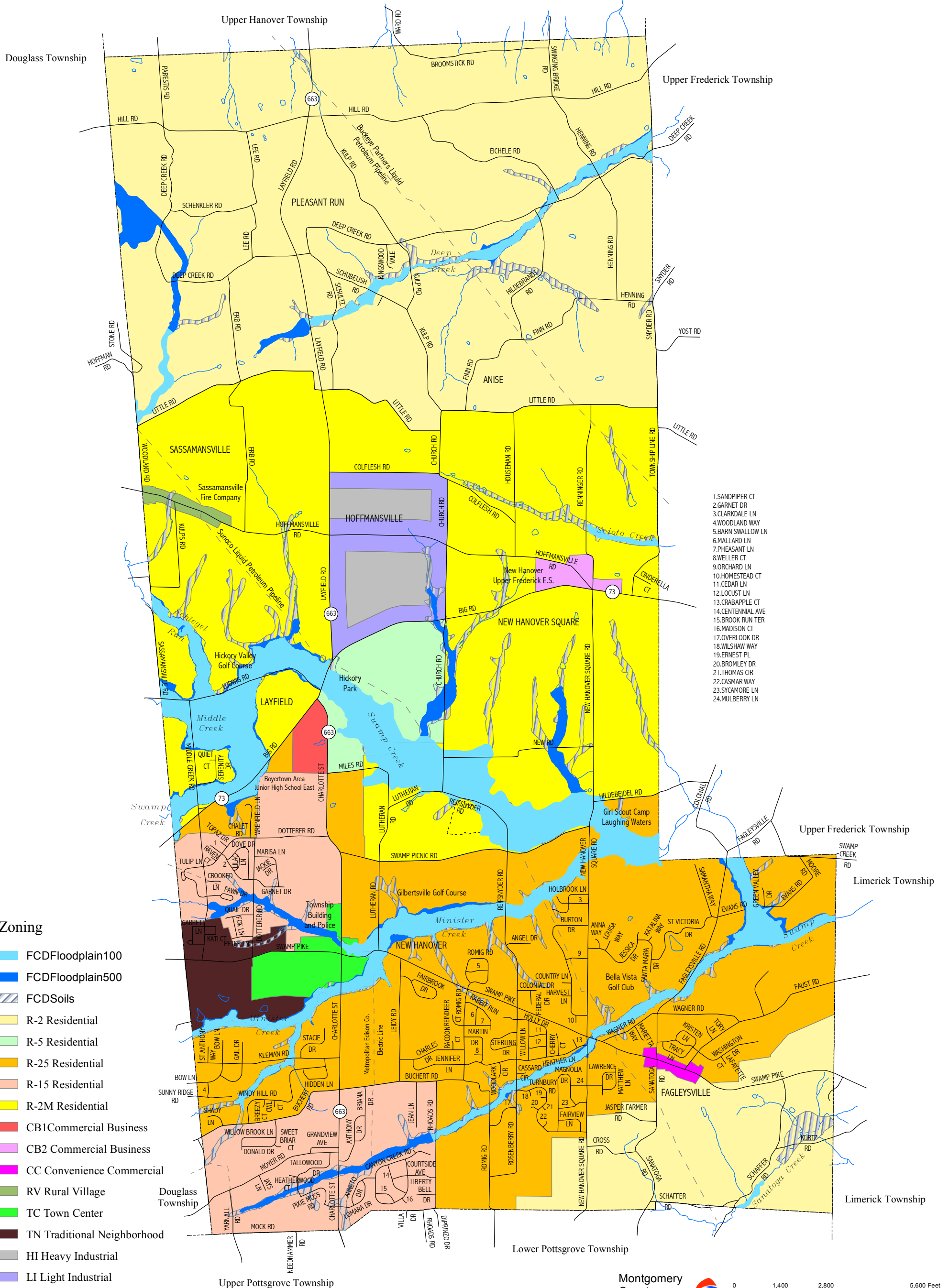


New Hanover Township

Montgomery County, Pennsylvania



1. SANDPIPER CT
2. GARNET DR
3. CLARKDALE LN
4. WOODLAND WAY
5. BARN SWALLOW LN
6. MALLARD LN
7. PHEASANT LN
8. WELLER CT
9. ORCHARD LN
10. HOMESTEAD CT
11. CEDAR LN
12. LOCUST LN
13. CRABAPPLE CT
14. CENTENNIAL AVE
15. BROOK RUN TER
16. MADISON CT
17. OVERLOOK DR
18. WILSHAW WAY
19. ERNEST PL
20. BROMLEY DR
21. THOMAS CIR
22. CASMAR WAY
23. SYCAMORE LN
24. MULBERRY LN

- ### Zoning
- FCDFloodplain100
 - FCDFloodplain500
 - FCDSoils
 - R-2 Residential
 - R-5 Residential
 - R-25 Residential
 - R-15 Residential
 - R-2M Residential
 - CB1 Commercial Business
 - CB2 Commercial Business
 - CC Convenience Commercial
 - RV Rural Village
 - TC Town Center
 - TN Traditional Neighborhood
 - HI Heavy Industrial
 - LI Light Industrial

Zoning boundaries as of April 2009

The Zoning Districts displayed on this map were determined by the Zoning Code of New Hanover Township. The date printed on this map is the latest information received from the Township by the Montgomery County Planning Commission. This information should not be considered the official "Adopted Zoning Map". Any question regarding the location of a district boundary should be directed to the Township.

Montgomery County Planning Commission

Montgomery County Courthouse - Planning Commission
 PO Box 311 ■ Norristown PA 19404-0311
 (p) 610.278.3722 ■ (f) 610.278.3941
www.montcopa.org/plancom

This map is based on 2015 ortho photography and official sources. Property lines were compiled from individual block maps from the Montgomery County Board of Assessment Appeals, with no verification from the deed. This map is not meant to be used as a legal definition of properties or for engineering purposes.

Scale: 0, 1,400, 2,800, 5,600 Feet
 Base map prepared January 2019

73 Pennsylvania Route
 --- Trail