



Recreation Authority of Roseville & Eastpointe Board
October 12, 2022 - 4:00pm
Conference Room - Recreation Authority Center
Meeting Agenda

- A. Roll Call
- B. 1. Approval of Minutes for Regular Meeting September 14, 2022.
- C. Approval of Disbursements and Budget Report.
 - 1. Disbursements #3
 - 2. Revenue/Expense Reports
- D. Hearing of the Public - agenda items only
- E. Communications
- F. Old Business
 - 1. Update on Tiger Cats.
- G. New Business
 - 1. Presentation to Mr. Al Truhan for his efforts in making the tennis courts behind the Military Museum more inviting for residents to play tennis.
 - 2. Discuss current Room/Gym/Pavilion Rental fees
 - 3. Discussion on upcoming Special events
- H. Hearing of the Public.
- I. Discussion by Director
- J. Discussion by Board members
- K. Adjournment

Next meeting is scheduled for Wednesday, November 9 at 4pm



Recreation Authority of Roseville & Eastpointe Board Meeting Minutes

Activity Center Room - Recreation Authority Center

18185 Sycamore, Roseville, MI 48066

September 14, 2022

Meeting called to order 4:03pm

A. Roll Call

- a. Ms. Brown, Mr. Klinefelt, Mr. Switalski and Mr. Merucci are present. Mr. Walters was absent.

B. Approval of Minutes

a. **Approval of Minutes for Regular Meeting on June 8, 2022**

- i. Motion to approve the June Regular Meeting minutes was made by Ms. Brown, supported by Mr. Klinefelt. All approved, none opposed. Motion passed.

C. Approval of Disbursements and Budget Report

a. **Disbursement #12**

- i. Motion to approve disbursement #12 was made by Mr. Klinefelt, supported by Mr. Switalski. All approved, none opposed. Motion passed.

b. **Disbursement #1**

- i. Motion to approve disbursement #1 was made by Mr. Switalski, supported by Mr. Klinefelt. All approved, none opposed. Motion passed.

c. **Disbursement #2**

- i. Motion to approve disbursement #2 was made by Ms. Brown, supported by Mr. Switalski. All approved, none opposed. Motion passed.

d. **Revenue/Expense Report**

- i. Motion to approve the revenue/expense report was made by Mr. Klinefelt, supported by Mr. Switalski. All approved, none opposed. Motion passed.

D. Hearing of the Public – agenda items only

- a. No public spoke

E. Communications

- a. Mr. Lipinski shared a letter sent to the Mi Hurricanes, a letter from Plante Moran regarding the audit and information from the Tiger Cats.

F. Old Business

G. New Business

a. **Update on Tiger Cats.**

- i. The Tiger Cats will not be utilizing the Football Field at Memorial Park for the 2022 season. The remaining balance for the 2021 season is projected to get paid off by the end of the week.

b. **Request approval of the Eastpointe Community Schools/Recreation Authority Cooperative Agreement.**

- i. A motion to approve the Eastpointe Community Schools/Recreation Authority Cooperative Agreement was made by Mr. Klinefelt, supported by Ms. Brown. All approved, none opposed. Motion passed.

c. **Update on the Swim Program and Lifeguarding classes.**

- i. The Lifeguarding lessons held over the summer ended up being held at South Lake High School due to maintenance being done at Roseville High School. The Recreation Authority would like to see additional open swim dates, water aerobics and swim lessons to be added to the schedules.

d. **Review of Summer Events and upcoming fall events.**

- i. Youth baseball finished up the end of July. Father/Son Nerf Wars was well attended and received. Rockin Summer Night was sponsored by Motor City Pawn Brokers, some changes to the event including a beer/wine tent hosted by the Eastpointe Lions Club and a higher end band. The Senior Center had a couple Summer Day Camp events, banana split days and trips have been starting back up. Summer Day Camp wrapped up the middle of August. Fall/Winter Newsletters have been printed and sent to the post office.

H. Hearing of the Public

- a. Harvey Curley, Eastpointe – Commended the basketball court at Memorial Park in Eastpointe. Would like to see them added to Spindler Park and Kennedy Park as well.

I. Discussion by Director

- a. Mr. Lipinski shared that the newsletter went out around 3 weeks ago and we've heard from residents that they have not received their newsletter. Shutdown was at the end of August; a lot of work and cleaning was done to get the building back in shape. Some program highlights are Kindergarten/1st grade cheer, Adaptive Dance Program, Babysitting Training, Indoor Park, Preschool, Youth Tennis, Cheer, Basketball and Volleyball, Start Smart Sports, Murder Mystery Dinner. Reminder to make nominations for the Halloween Decorating Contest. The Senior Center is hosting a Parking Lot Party tomorrow.

J. Discussion by Board Members

- a. **Ms. Brown** – Nothing at this time.
- b. **Mr. Klinefelt** – Nothing at this time.
- c. **Mr. Switalski** – Nothing at this time.
- d. **Mr. Merucci** – Shared his thoughts on the newsletter and mailings. The Eastpointe Parks Commission plans on having a couple events in the future – a giant slip n slide and a mud day.

Meeting adjourned – 4:40pm

Recreational Authority of Roseville & Eastpointe

Disbursement #3

September 2022 79,274.01

AP Total 79,274.01

Pay #6 (9/14/22) 28,893.74

Pay #7 (9/28/22) 31,388.77


Payroll Total 60,282.51

Grand Total **139,556.52**

*THE FOLLOWING AMOUNTS REPRESENT DISBURSEMENTS FOR
MATERIALS AND SERVICES RECEIVED.*

SUBMITTED FOR BOARD APPROVAL:


EXECUTIVE DIRECTOR


CITY CONTROLLER

THE BOARD APPROVED PAYMENT FOR THE ABOVE VOUCHERS ON:

DATE

BOARD CLERK / TREASURER

CHECK REGISTER
SEPTEMBER 2022
RARE

GL Number	Inv. Line Desc	Vendor	Invoice Desc.	Invoice	Due Date	Amount	Check #
Fund 208 PARK/RECREATION FUND							
Dept 101 GENERAL DEPARTMENT							
208-101-402.000	CURRENT PROPERTY TAXES	MACOMB COUNTY TREASURER	INVOICE (RARE) THROUGH 07-31-22	73122	9/1/2022	1,007.12	8307
208-101-402.000	CURRENT PROPERTY TAXES	MACOMB COUNTY TREASURER	INVOICE (RSLV) THROUGH 08-31-22	83122	9/13/2022	118.43	8333
208-101-652.000	RECREATION USE AND ADMISSION FEE-ROSEVIL	DINVERNO, JOSEPH	REFUND OF RENTAL	81922	9/1/2022	200.00	8300
208-101-652.000	RECREATION USE AND ADMISSION FEE-ROSEVIL	JOHNSON, SONYA	REFUND	82922	9/1/2022	55.00	8304
208-101-652.000	RECREATION USE AND ADMISSION FEE-ROSEVIL	BRENT, MAGGIE	REFUND OF RENTAL DEPOSIT	90822	9/13/2022	200.00	8315
208-101-652.000	RECREATION USE AND ADMISSION FEE-ROSEVIL	CARPENTER, CHRISTYL	REFUND OF RENTAL DEPOSIT	91322	9/13/2022	100.00	8317
208-101-652.000	RECREATION USE AND ADMISSION FEE-ROSEVIL	FAIR, JASON	REFUND OF RENTAL DEPOSIT	91322	9/13/2022	200.00	8325
208-101-652.000	RECREATION USE AND ADMISSION FEE-ROSEVIL	GARY, THERESA	REFUND OF RENTAL DEPOSIT	91322	9/13/2022	100.00	8326
208-101-652.000	RECREATION USE AND ADMISSION FEE-ROSEVIL	JANKINS, VERONICA	REFUND	91322	9/13/2022	150.00	8330
208-101-652.000	RECREATION USE AND ADMISSION FEE-ROSEVIL	LONG, THERASA	REFUND OF RENTAL DEPOSIT	91322	9/13/2022	200.00	8332
208-101-652.000	RECREATION USE AND ADMISSION FEE-ROSEVIL	PETERSON, JAMES	REFUND OF RENTAL DEPOSIT	90822	9/13/2022	105.00	8336
208-101-652.000	RECREATION USE AND ADMISSION FEE-ROSEVIL	TAYLOR, PHYLISS	REFUND OF RENTAL DEPOSIT	90822	9/13/2022	200.00	8337
208-101-652.000	RECREATION USE AND ADMISSION FEE-ROSEVIL	TILLES, MARLISA	REFUND	91322	9/13/2022	50.00	8339
208-101-652.000	RECREATION USE AND ADMISSION FEE-ROSEVIL	ADAMS, SHARON	REFUND OF RENTAL DEPOSIT	91922	9/21/2022	200.00	8346
208-101-652.000	RECREATION USE AND ADMISSION FEE-ROSEVIL	BLEDSE, KATHRYN	REFUND	91422	9/21/2022	45.00	8348
208-101-652.000	RECREATION USE AND ADMISSION FEE-ROSEVIL	BROWN-JONES, EARLINE	REFUND OF RENTAL DEPOSIT	91922	9/21/2022	100.00	8349
208-101-652.000	RECREATION USE AND ADMISSION FEE-ROSEVIL	BUFF, LUCIA	REFUND OF RENTAL DEPOSIT	91922	9/21/2022	100.00	8350
208-101-652.000	RECREATION USE AND ADMISSION FEE-ROSEVIL	COULTER, KISHA	REFUND OF RENTAL DEPOSIT	91922	9/21/2022	100.00	8351
208-101-652.000	RECREATION USE AND ADMISSION FEE-ROSEVIL	DAVIS-HILLS, LATRICE	REFUND OF RENTAL DEPOSIT	91922	9/21/2022	100.00	8352
208-101-652.000	RECREATION USE AND ADMISSION FEE-ROSEVIL	FEATHERSTONE, RENA	REFUND OF RENTAL DEPOSIT	91922	9/21/2022	100.00	8353
208-101-652.000	RECREATION USE AND ADMISSION FEE-ROSEVIL	GULAS, JEAN	REFUND	91422	9/21/2022	45.00	8354
208-101-652.000	RECREATION USE AND ADMISSION FEE-ROSEVIL	MACOMB ALUMAE CHAPTER-DELTA SIGMA	REFUND OF RENTAL DEPOSIT	91922	9/21/2022	100.00	8356
208-101-730.000	POSTAGE	CITY OF ROSEVILLE	AUGUST 2022 POSTAGE	1857	9/13/2022	99.75	8318
208-101-740.000	SUPPLIES	MPARKS	2022 MPARKS GRAND EXPERIENCE	200004985	9/13/2022	47,695.00	8335
208-101-801.000	PROFESSIONAL SERVICES	ACORN ELECTRIC COMPANY	REMOVE MOTION SENSORS/INSTALL NEW 20 AMP	81722	9/1/2022	317.00	8296
208-101-801.000	PROFESSIONAL SERVICES	BIANCO TOURS INC	8/23 PUT IN BAY TRIP	8D92493	9/1/2022	6,576.00	8298
208-101-801.000	PROFESSIONAL SERVICES	3DS PIZZA AND MORE	STAFF MEALS FOR ROCKIN' SUMMER NIGHT	PR25780	9/13/2022	70.00	8314
208-101-801.000	PROFESSIONAL SERVICES	CITY OF ST CLAIR SHORES	JULY & AUGUST POOL VISITS	PR25779	9/13/2022	975.00	8319
208-101-801.000	PROFESSIONAL SERVICES	GERARD, BRYAN	DADDY-DAUGHTER DJ SERVICES	PR25784	9/13/2022	450.00	8327
208-101-801.000	PROFESSIONAL SERVICES	CHIMENTI, PAUL	DJ SERVICES FOR SENIOR CENTER PARKING LOT PARTY	PR25786	9/15/2022	275.00	8341
208-101-801.000	PROFESSIONAL SERVICES	ROSEVILLE COMMUNITY SCHOOLS	2022 SDC BUS TRANSPORTATION (JUNE)	82216	7/2/2022	710.70	8358
208-101-801.000	PROFESSIONAL SERVICES	ROSEVILLE COMMUNITY SCHOOLS	2022 SDC BUS TRANSPORTATION (JULY)	82216	9/21/2022	3,304.05	8358
208-101-818.000	CONTRACTUAL SERVICES	ELSEY, TOM	8/18-8/25 OFFICIAL'S PAY	PR25778	9/1/2022	240.00	8302
208-101-818.000	CONTRACTUAL SERVICES	JABLONSKI, ROMAN	8/18 OFFICIAL'S PAY	PR25778	9/1/2022	160.00	8303
208-101-818.000	CONTRACTUAL SERVICES	KRISTIN JD WILSON	JUNE CHAIR YOGA	81922	7/2/2022	25.84	8305
208-101-818.000	CONTRACTUAL SERVICES	KRISTIN JD WILSON	JULY/AUGUST CHAIR YOGA	81922	9/1/2022	103.36	8305
208-101-818.000	CONTRACTUAL SERVICES	KRZEZEWSKI, AL	8/25 OFFICIAL'S PAY	PR25778	9/1/2022	80.00	8306
208-101-818.000	CONTRACTUAL SERVICES	SUMINSKI, THOMAS	8/25 OFFICIAL'S PAY	PR25778	9/1/2022	80.00	8308
208-101-818.000	CONTRACTUAL SERVICES	EPIQUE MOVEMENT	SUMMER TRACK CLUB	81122	9/13/2022	330.00	8324
208-101-818.000	CONTRACTUAL SERVICES	BADALI, ANTHONY	6/24 & 6/27 UMPIRE PAY	PR25787	7/3/2022	225.00	8347
208-101-818.000	CONTRACTUAL SERVICES	BADALI, ANTHONY	7/7 & 7/21 UMPIRE PAY	PR25787	9/21/2022	180.00	8347
208-101-920.000	UTILITIES	DTE ENERGY	ELEC SVC 9100 026 8010 6	90822	9/13/2022	14.79	8321
208-101-931.000	BUILDING MAINTENANCE	BRIGHT HORIZON SERVICES INC	FERTILIZER TREATMENT	40189	9/13/2022	402.00	8316
208-101-931.000	BUILDING MAINTENANCE	BRIGHT HORIZON SERVICES INC	STEAM CLEAN ALL CARPETED AREAS	40246	9/13/2022	715.00	8316
208-101-931.000	BUILDING MAINTENANCE	DU-ALL CLEANING INC	STRIP/WAX FLOORS - CLEAN TILE/GROUT - CLEAN WINDOWS	16395	9/13/2022	6,153.78	8322
208-101-931.000	BUILDING MAINTENANCE	DUNBAR MECHANICAL INC	WO#150197 - SERVICE HVAC UNIT	93457	9/13/2022	574.33	8323
208-101-931.000	BUILDING MAINTENANCE	GREAT LAKES PEST CONTROL CO INC	PEST CONTROL - 8-22-22	68450	9/13/2022	50.00	8328
208-101-931.000	BUILDING MAINTENANCE	HOME DEPOT CREDIT SERVICES	GRAY PREMIXED GROUT	90222	9/13/2022	37.98	8329
208-101-931.000	BUILDING MAINTENANCE	KSS ENTERPRISES	EC-H2O CARTRIDGE NANOCLEAN	1414373	9/13/2022	247.30	8331
208-101-931.000	BUILDING MAINTENANCE	KSS ENTERPRISES	PROTECT COATING 5 GAL	1398971-1	9/21/2022	206.75	8355

208-101-933.000	OFFICE EQUIPMENT MAINTENANCE	MARCO TECHNOLOGIES LLC	MTHLY COPIER CHGS #MER725	INV10319971	9/13/2022	73.09	8334
208-101-933.000	OFFICE EQUIPMENT MAINTENANCE	MARCO TECHNOLOGIES LLC	MTHLY COPIER CHGS #MER725	INV10346293	9/21/2022	164.84	8357
208-101-940.000	RENTALS	TEE PEE INC	KENNEDY PARK UNITS	32612	9/13/2022	330.00	8338
208-101-940.000	RENTALS	TEE PEE INC	SPINDLER/MEMORIAL TOILETS	32647	9/21/2022	400.00	8359
Total For Dept 101 GENERAL DEPARTMENT						74,842.11	
Dept 691 SMART							
208-691-751.000	FUEL	CITY OF ROSEVILLE	JULY 2022 MECHANICS CHARGES-RARE	JULY 2022 CHARGES	9/1/2022	1,585.58	8299
208-691-801.000	PROFESSIONAL SERVICES	365 DETAILING, LLC	DEPOSIT PAYMENT FOR CLEANING SMART BUSES	PR25782	9/13/2022	400.00	8313
208-691-801.000	PROFESSIONAL SERVICES	365 DETAILING, LLC	REMAINING BALANCE FOR CLEANING SMART BUSES	PR25783	9/13/2022	800.00	8313
208-691-850.000	COMMUNICATIONS	DIRECT TV	8/21-9/20 CHARGES	008724326X220822	9/1/2022	184.98	8301
208-691-850.000	COMMUNICATIONS	COMCAST	9/12-10/11/22 SERVICE CHARGE	82822	9/13/2022	96.90	8320
208-691-939.000	VEHICLE MAINTENANCE	CITY OF ROSEVILLE	JULY 2022 MECHANICS CHARGES-RARE	JULY 2022 CHARGES	9/1/2022	78.99	8299
Total For Dept 691 SMART						3,146.45	
Total For Fund 208 PARK/RECREATION FUND						77,988.56	
Fund 408 CAPITAL PROJECTS FUND - RARE							
Dept 101 GENERAL DEPARTMENT							
408-101-976.000	BUILDING ADDITON & IMPROVEMENT	ANDERSON, ECKSTEIN & WESTRICK INC	PROJ# 1556-0003-0 ROSEVILLE ROTARY PARK	139138	9/1/2022	1,285.45	8297
Total For Dept 101 GENERAL DEPARTMENT						1,285.45	
Total For Fund 408 CAPITAL PROJECTS FUND - RARE						1,285.45	
Fund Totals:							
Fund 208 PARK/RECREATION FUND						77,988.56	
Fund 408 CAPITAL PROJECTS FUND - RARE						1,285.45	
Total For All Funds:						79,274.01	

09/09/2022 12:56 PM
User: SIPESS
DB: Roseville

JOURNALS POSTING REPORT
POSTING REPORT

Page: 1/1

Post Date	Journal	Summ/Det	Ref #	Description	DR Amount	CR Amount
GL Number						
09/14/2022	PR	S	722096 457	SUMMARY PR 09/14/2022		
208-000-001.001				CASH RECR AUTH		16,722.57
208-000-258.000				ACCRUED TAXES PAYABLE		3,666.64
208-000-258.001				OTHER PAYROLL WITHHOLDING		8,504.53
208-101-706.000				WAGES- PERMANENT EMPLOYEES	13,498.03	
208-101-707.000				WAGES- TEMPORARY EMPLOYEES	7,862.89	
208-101-715.000				FICA-EMPLOYER'S	1,591.73	
208-101-718.000				RETIREMENT FUND CONTRIBUTION	2,260.69	
208-691-706.000				WAGES- PERMANENT EMPLOYEES	1,650.90	
208-691-707.000				WAGES- TEMPORARY EMPLOYEES	1,507.25	
208-691-715.000				FICA-EMPLOYER'S	241.59	
208-691-718.000				RETIREMENT FUND CONTRIBUTION	280.66	
					<hr/>	<hr/>
					28,893.74	28,893.74
					<hr/>	<hr/>
					28,893.74	28,893.74

09/23/2022 10:59 AM

User: SIPESS

DB: Roseville

JOURNALS POSTING REPORT

POSTING REPORT

Page: 1/1

Post Date	Journal	Summ/Det	Ref #	Description	DR Amount	CR Amount
GL Number						
09/28/2022	PR	S	723568 458	SUMMARY PR 09/28/2022		
208-000-001.001				CASH RECR AUTH		18,657.29
208-000-258.000				ACCRUED TAXES PAYABLE		4,021.22
208-000-258.001				OTHER PAYROLL WITHHOLDING		8,710.26
208-101-706.000				WAGES- PERMANENT EMPLOYEES	13,298.03	
208-101-707.000				WAGES- TEMPORARY EMPLOYEES	9,205.38	
208-101-715.000				FICA-EMPLOYER'S	1,679.11	
208-101-718.000				RETIREMENT FUND CONTRIBUTION	2,260.69	
208-691-706.000				WAGES- PERMANENT EMPLOYEES	1,650.90	
208-691-707.000				WAGES- TEMPORARY EMPLOYEES	2,682.50	
208-691-715.000				FICA-EMPLOYER'S	331.50	
208-691-718.000				RETIREMENT FUND CONTRIBUTION	280.66	
					<u>31,388.77</u>	<u>31,388.77</u>
					<u>31,388.77</u>	<u>31,388.77</u>

10/07/2022		REVENUE AND EXPENDITURE REPORT FOR RARE							
		PERIOD ENDING 09/30/2022							
		% Fiscal Year Completed: 25.00							
		2022-23		YTD BALANCE		ACTIVITY FOR			
		ORIGINAL	2022-23	09/30/2022		MONTH 09/30/22	ENCUMBERED	UNENCUMBERED	% BDGT
GL NUMBER	DESCRIPTION	BUDGET	AMENDED BUDGET	NORM (ABNORM)		INCR (DECR)	YEAR-TO-DATE	BALANCE	USED
Fund 208 - PARK/RECREATION FUND									
Revenues									
208-101-402.000	CURRENT PROPERTY TAXES	1,512,789.00	1,512,789.00	7,695.13		(707.08)	0.00	1,505,093.87	0.51%
208-101-441.000	LOCAL COMMUNITY STABILIZATION SHARE TAX	38,229.00	38,229.00	0.00		0.00	0.00	38,229.00	0.00%
208-101-614.000	VENDING REVENUE	1,000.00	1,000.00	0.00		0.00	0.00	1,000.00	0.00%
208-101-652.000	RECREATION USE AND ADMISSION FEE-ROSEVIL	450,000.00	450,000.00	121,850.13		7,948.24	0.00	328,149.87	27.08%
208-101-653.000	SMART-OPERATING CREDITS	193,712.00	193,712.00	0.00		0.00	0.00	193,712.00	0.00%
208-101-654.000	SMART- FAREBOX REVENUE	57,892.00	57,892.00	1,632.00		374.00	0.00	56,260.00	2.82%
208-101-664.000	INTEREST AND DIVIDENDS	2,000.00	2,000.00	0.00		0.00	0.00	2,000.00	0.00%
208-101-674.000	CONTRIBUTIONS AND DONATIONS	2,000.00	2,000.00	94.40		0.00	0.00	1,905.60	4.72%
TOTAL REVENUES		2,257,622.00	2,257,622.00	131,271.66		7,615.16	0.00	2,126,350.34	5.81%
Expenditures									
208-101-706.000	WAGES- PERMANENT EMPLOYEES	352,504.00	352,504.00	99,113.29		26,796.06	0.00	253,390.71	28.12%
208-101-707.000	WAGES- TEMPORARY EMPLOYEES	378,043.00	378,043.00	107,624.38		17,068.27	0.00	270,418.62	28.47%
208-101-709.000	WAGES- OVERTIME	1,000.00	1,000.00	0.00		0.00	0.00	1,000.00	0.00%
208-101-715.000	FICA-EMPLOYER'S	55,964.00	55,964.00	15,518.82		3,270.84	0.00	40,445.18	27.73%
208-101-718.000	RETIREMENT FUND CONTRIBUTION	58,620.00	58,620.00	15,848.50		4,521.38	0.00	42,771.50	27.04%
208-101-719.000	HEALTH, LIFE, DENTAL	85,957.00	85,957.00	25.00		0.00	0.00	85,932.00	0.03%
208-101-725.000	UNEMPLOYMENT & WORKERS COMPENSATION	7,002.00	7,002.00	7,101.00	A	0.00	0.00	(99.00)	101.41%
208-101-728.000	OFFICE SUPPLIES	8,000.00	8,000.00	2,936.13		0.00	259.80	5,063.87	36.70%
208-101-730.000	POSTAGE	17,928.00	17,928.00	5,891.62		99.75	0.00	12,036.38	32.86%
208-101-740.000	SUPPLIES	46,350.00	46,350.00	11,442.43		47,695.00	0.00	34,907.57	24.69%
208-101-740.004	PLAYGROUND AND ATHLETIC SUPPLIES	55,620.00	55,620.00	4,622.12		0.00	0.00	50,997.88	8.31%
208-101-751.000	FUEL	4,000.00	4,000.00	0.00		0.00	0.00	4,000.00	0.00%
208-101-801.000	PROFESSIONAL SERVICES	62,500.00	62,500.00	14,388.41		12,677.75	0.00	48,111.59	23.02%
208-101-818.000	CONTRACTUAL SERVICES	98,000.00	98,000.00	64,306.16	D	1,424.20	0.00	33,693.84	65.62%
208-101-826.000	LEGAL FEES	1,000.00	1,000.00	0.00		0.00	0.00	1,000.00	0.00%
208-101-850.000	COMMUNICATIONS	30,000.00	30,000.00	1,077.02		0.00	0.00	28,922.98	3.59%
208-101-861.000	AUTO EXPENSE ALLOWANCE	250.00	250.00	0.00		0.00	0.00	250.00	0.00%
208-101-864.000	CONFERENCE & WORKSHOPS	3,500.00	3,500.00	1,646.16		0.00	0.00	1,853.84	47.03%
208-101-880.000	COMMUNITY PROMOTION	27,550.00	27,550.00	3,062.89		0.00	0.00	24,487.11	11.12%
208-101-900.000	PRINTING & PUBLICATIONS	25,000.00	25,000.00	0.00		0.00	0.00	25,000.00	0.00%
208-101-901.000	BANK FEES	7,000.00	7,000.00	0.00		0.00	0.00	7,000.00	0.00%
208-101-910.000	INSURANCE AND BONDS	35,000.00	35,000.00	39,593.00	B	0.00	0.00	(4,593.00)	113.12%
208-101-920.000	UTILITIES	35,000.00	35,000.00	44.69		14.79	0.00	34,955.31	0.13%
208-101-931.000	BUILDING MAINTENANCE	59,500.00	59,500.00	16,189.07		8,387.14	0.00	43,310.93	27.21%
208-101-933.000	OFFICE EQUIPMENT MAINTENANCE	11,500.00	11,500.00	756.31		237.93	0.00	10,743.69	6.58%
208-101-939.000	VEHICLE MAINTENANCE	7,000.00	7,000.00	0.00		0.00	0.00	7,000.00	0.00%
208-101-940.000	RENTALS	6,000.00	6,000.00	1,300.00		730.00	0.00	4,700.00	21.67%
208-101-958.000	MEMBERSHIPS AND DUES	2,500.00	2,500.00	964.74		0.00	0.00	1,535.26	38.59%
208-101-960.000	EDUCATION AND TRAINING	5,000.00	5,000.00	765.63		0.00	0.00	4,234.37	15.31%
208-101-961.000	CERTIFICATIONS & LICENSES	1,000.00	1,000.00	0.00		0.00	0.00	1,000.00	0.00%
208-101-993.000	LAND USE FEE	120,000.00	120,000.00	0.00		0.00	0.00	120,000.00	0.00%
208-101-993.001	VENDING EXPENSE	250.00	250.00	0.00		0.00	0.00	250.00	0.00%
208-101-996.027	ADMINISTRATION COSTS	63,672.00	63,672.00	0.00		0.00	0.00	63,672.00	0.00%

10/07/2022		REVENUE AND EXPENDITURE REPORT FOR RARE							
		PERIOD ENDING 09/30/2022							
		% Fiscal Year Completed: 25.00							
		2022-23		YTD BALANCE		ACTIVITY FOR			
		ORIGINAL	2022-23	09/30/2022		MONTH 09/30/22	ENCUMBERED	UNENCUMBERED	% BDGT
GL NUMBER	DESCRIPTION	BUDGET	AMENDED BUDGET	NORM (ABNORM)		INCR (DECR)	YEAR-TO-DATE	BALANCE	USED
208-101-999.000	TRANSFERS OUT	333,807.00	333,807.00	0.00		0.00	0.00	333,807.00	0.00%
Total Expenditures - Dept 101-GENERAL DEPARTMENT		2,006,017.00	2,006,017.00	414,217.37		122,923.11	259.80	1,591,799.63	20.65%
208-691-706.000	WAGES- PERMANENT EMPLOYEES	39,250.00	39,250.00	12,349.39		3,301.80	0.00	26,900.61	31.46%
208-691-707.000	WAGES- TEMPORARY EMPLOYEES	101,341.00	101,341.00	17,727.13		4,189.75	0.00	83,613.87	17.49%
208-691-715.000	FICA-EMPLOYER'S	10,756.00	10,756.00	2,300.84		573.09	0.00	8,455.16	21.39%
208-691-718.000	RETIREMENT FUND CONTRIBUTION	6,672.00	6,672.00	1,959.11		561.32	0.00	4,712.89	29.36%
208-691-719.000	HEALTH, LIFE, DENTAL	18,597.00	18,597.00	0.00		0.00	0.00	18,597.00	0.00%
208-691-725.000	UNEMPLOYMENT & WORKERS COMPENSATION	1,334.00	1,334.00	1,334.00	A	0.00	0.00	0.00	100.00%
208-691-740.000	SUPPLIES	750.00	750.00	0.00		0.00	0.00	750.00	0.00%
208-691-751.000	FUEL	16,000.00	16,000.00	1,585.58		1,585.58	0.00	14,414.42	9.91%
208-691-801.000	PROFESSIONAL SERVICES	12,000.00	12,000.00	1,255.00		1,200.00	0.00	10,745.00	10.46%
208-691-818.000	CONTRACTUAL SERVICES	5,150.00	5,150.00	1,593.64		0.00	0.00	3,556.36	30.94%
208-691-850.000	COMMUNICATIONS	6,500.00	6,500.00	806.04		281.88	0.00	5,693.96	12.40%
208-691-880.000	COMMUNITY PROMOTION	5,000.00	5,000.00	860.33		0.00	0.00	4,139.67	17.21%
208-691-910.000	INSURANCE AND BONDS	2,671.00	2,671.00	2,671.00	B	0.00	0.00	0.00	100.00%
208-691-939.000	VEHICLE MAINTENANCE	3,713.00	3,713.00	115.23		78.99	0.00	3,597.77	3.10%
208-691-983.000	OFFICE EQUIPMENT	2,500.00	2,500.00	0.00		0.00	0.00	2,500.00	0.00%
208-691-996.027	ADMINISTRATION COSTS	19,371.00	19,371.00	0.00		0.00	0.00	19,371.00	0.00%
Total Expenditures - Dept 691-SMART		251,605.00	251,605.00	44,557.29		11,772.41	0.00	207,047.71	17.71%
TOTAL EXPENDITURES		2,257,622.00	2,257,622.00	458,774.66		134,695.52	259.80	1,798,847.34	20.32%
Fund 208 - PARK/RECREATION FUND:									
TOTAL REVENUES		2,257,622.00	2,257,622.00	131,271.66		7,615.16	0.00	2,126,350.34	
TOTAL EXPENDITURES		2,257,622.00	2,257,622.00	458,774.66		134,695.52	259.80	1,798,847.34	
NET OF REVENUES & EXPENDITURES		0.00	0.00	(327,503.00)		(127,080.36)	(259.80)	327,503.00	

With Our Greatest

APPRECIATION

The Recreation Authority of Roseville & Eastpointe Board

Presents

Al Truhan

With this Award of Recognition and Appreciation for Your Ongoing
Commitment and Dedicated Service to Making the Tennis Courts in the
City of Eastpointe more inviting for all Residents to Enjoy!

THANK YOU!

Email from Al Truhan indicating his efforts at the Tennis Courts this summer:

We have completed our goal this year in making the tennis courts behind the Military museum on Stephens Rd a little more inviting for players to come down and join in.

Every time that I have been there since the Labor Day weekend there has been a patrol car monitoring the area and I am hopeful that it will inhibit any more graffiti on the wall.

In summary, this is what we accomplished on the first 3 courts this summer:

- Pulled grass and weeds growing on the courts through the cracks
- Filled all the larger cracks with closed cell backer rod.
- Covered the cracks with tar to even the surface and prevent future weed growth.
- Painted dual lines on the practice wall.
- Masked and painted all the court lines and brought them back into proper width specifications

I estimate that my group of volunteers have donated somewhat over 600.00 in materials and over 200 labor hours so far.

Before starting any work on these courts, I did not see anyone using them for tennis and since we started, I have observed local residents and families enjoying them.

Hopefully, we can continue improving the other four courts next year and see them filled with players.

I have 3 requests

- I understand that the nets are usually taken down for the season around October 1st. I wonder if that could be delayed at this location since it is likely that the weather will allow outdoor play for all of October and probably into November. When I run my drills and lessons, I find it still comfortable if the temperatures are at 50 degrees or higher.
- Another great feature of these courts is the lighting installed. I had the museum flip the switch one day to test if they were still functional but they didn't light up. I suspect that this may be due to the electrical circuit being disconnected since they were not being used. If possible could that be determined and made operational for next year?
- It would be helpful if a Port-a-john could be set up there. The museum graciously offered use of their facilities to us, however, they are only there on Saturdays.

I appreciate the support we have been awarded by the curators of the museum, the recreation dept., the city workers and the police department.

Thank you

Al Truhan
Christine Nathman-Parisi
and all of our friends

**RECREATION AUTHORITY OF
ROSEVILLE & EASTPOINTE
BUILDING RENTAL RATES**

- Room Rentals can be made up to 6 months in advance
- Gym Rentals can be made up to 3 months in advance
- A late fee of \$25 will be added to all rentals booked or unpaid within a ten (10) business day range with the exception of Funeral Luncheons/Wakes
- Room Rentals deposit must be made in order to reserve; balance MUST be paid 10 business days (Monday – Friday) prior to rental
- Gym rental fees are not required at time of reservation; must be paid by 10 business days (Monday – Friday) prior to rental

Room Capacity:

Room 1 = 60
Room 2 = 40
Room 3 = 50
Activity Center = 90
Multi-Purpose = 90
Rooms 1, 2, 3 = 150

Deposit:

Room 1 = \$100
Room 2 = \$100
Room 3 = \$100
Activity Center = \$200
Multi-Purpose = \$200
Rooms 1, 2, 3 = \$200

NON-PROFIT GROUPS

- Must provide non-profit status at time of reservation
- Rental is for a 3-hour block of time, no additional set-up time is allotted
- Deposit may be waived if rental is not having food, pending approval from Executive Director
- Churches are exempt from Non-Profit Rate

Monday – Friday before 6:00pm:

Room 1 = \$50; \$17 per additional hour
Room 2 = \$50; \$17 per additional hour
Room 3 = \$50; \$17 per additional hour
Activity Center = \$115; \$32 per additional hour
Multi-Purpose = \$115; \$32 per additional hour

Monday – Friday after 6:00pm; Weekend hours:

Room 1 = \$100; \$17 per additional hour
Room 2 = \$100; \$17 per additional hour
Room 3 = \$100; \$17 per additional hour
Activity Center = \$150; \$32 per additional hour
Multi-Purpose = \$150; \$32 per additional hour

MEETING RENTALS

- Rental is for a 3-hour block of time; no additional set-up time is allotted
- Deposit may be waived if rental is not having food, pending approval from Executive Director

Roseville/Eastpointe based:

Monday – Friday before 6:00pm:

Room 1 = \$100; \$32 per additional hour
Room 2 = \$100; \$32 per additional hour
Room 3 = \$100; \$32 per additional hour
Activity Center = \$175; \$57 per additional hour
Multi-Purpose = \$175; \$57 per additional hour

Monday – Friday after 6:00pm; Weekend hours:

Room 1 = \$135; \$32 per additional hour
Room 2 = \$135; \$32 per additional hour
Room 3 = \$135; \$32 per additional hour
Activity Center = \$210; \$57 per additional hour
Multi-Purpose = \$210; \$57 per additional hour

Non-Roseville/Eastpointe based:

Monday – Friday before 6:00pm:

Room 1 = \$125; \$47 per additional hour
Room 2 = \$125; \$47 per additional hour
Room 3 = \$125; \$47 per additional hour
Activity Center: \$250; \$87 per additional hour
Multi-Purpose: \$250; \$87 per additional hour

Monday – Friday after 6:00pm; Weekend hours:

Room 1 = \$160; \$47 per additional hour
Room 2 = \$160; \$47 per additional hour
Room 3 = \$160; \$47 per additional hour
Activity Center: \$285; \$87 per additional hour
Multi-Purpose: \$285; \$87 per additional hour

BASIC PARTY RENTALS

Rental is for a 4-hour block of time with one additional hour prior to start time for setup

Deposits are due at the time of reservation. No food or drink in the gymnasium.

Resident:

Monday – Friday before 6:00pm:

Room 1 = \$145; \$37 per additional hour

Room 2 = \$145; \$37 per additional hour

Room 3 = \$145; \$37 per additional hour

Activity Center = \$265; \$67 per additional hour

Multi-Purpose = \$265; \$67 per additional hour

Rooms 1, 2, 3 = \$385; \$97 per additional hour

Monday – Friday after 6:00pm; Weekend hours:

Room 1 = \$180; \$37 per additional hour

Room 2 = \$180; \$37 per additional hour

Room 3 = \$180; \$37 per additional hour

Activity Center = \$300; \$67 per additional hour

Multi-Purpose = \$300; \$67 per additional hour

Rooms 1, 2, 3 = \$420; \$97 per additional hour

Non-Resident:

Monday – Friday before 6:00pm:

Room 1 = \$175; \$57 per additional hour

Room 2 = \$175; \$57 per additional hour

Room 3 = \$175; \$57 per additional hour

Activity Center = \$325; \$87 per additional hour

Multi-Purpose = \$325; \$87 per additional hour

Rooms 1, 2, 3 = \$475; \$120 per additional hour

Monday – Friday after 6:00pm; Weekend hours:

Room 1 = \$210; \$57 per additional hour

Room 2 = \$210; \$57 per additional hour

Room 3 = \$210; \$57 per additional hour

Activity Center = \$360; \$87 per additional hour

Multi-Purpose = \$360; \$87 per additional hour

Rooms 1, 2, 3 = \$510; \$120 per additional hour

BIRTHDAY PARTY PACKAGE:

Package is good for Room 2 and a gym rental. Room rental is for a minimum 3-hour block of time, 1-hour prior for setup. Gym time is for first two hours of rental time. A deposit of \$100 is required.

Resident:

\$85/hour

Non-Resident:

\$105/hour

GYM RENTALS:

Rental is for a 2-hour block of time

Large gym = maximum 30 participants; Small gym = maximum 20 participants

Spectators are not permitted

Scoreboard/Scorekeeper: \$10 per hour; MUST be paid in cash prior to start of rental

Non-Marking shoes are required to play

Food is not permitted in the gym; drinks must be kept off the court

Party rentals (tables/chairs) are not permitted in the gym

Resident:

Monday – Thursday:

Large Gym: \$110; \$55 per additional hour

Small Gym: \$100; \$50 per additional hour

Friday – Sunday:

Large Gym: \$120; \$60 per additional hour

Small Gym: \$110; \$55 per additional hour

Non-Resident:

Monday – Thursday:

Large Gym: \$130; \$65 per additional hour

Small Gym: \$120; \$60 per additional hour

Friday – Sunday:

Large Gym: \$140; \$70 per additional hour

Small Gym: \$130; \$65 per additional hour

PAVILION & GAZEBO RENTAL RATES

PAVILIONS: **NO** ELECTRICITY

Resident: \$10/hour

Non-Resident: \$15/hour

Dooley Park*
30889 Edison
Roseville

CAPACITY: 75

Huron Park*
18605 Frazho
Roseville

CAPACITY: 75

Rotary Park*
29571 Utica
Roseville

CAPACITY: 75

Macomb Gardens
25271 Macomb
Roseville

CAPACITY: 75

PAVILIONS: ELECTRICITY

Resident: \$15/hour

Non-Resident: \$20/hour

Veterans Memorial Park*
27325 Barkman
Roseville

CAPACITY: 75

Memorial Park**
24820 Flower
Eastpointe

CAPACITY: 50 - 55

John F. Kennedy Park**
24517 Schroeder
Eastpointe

SMALL: 125
LARGE: { **EAST: 150**
WEST: 150

Spindler Park**
19400 Stephens
Eastpointe

NORTH: 50 – 55
SOUTH: 125
WEST: 80 - 100

VETERAN'S MEMORIAL PARK GAZEBO

Resident: \$25/hour

Non-Resident: \$50/hour

PLEASE NOTE:

~ Minimum 5-hour rental

~ *Alcohol is NOT allowed in Roseville Parks; **Alcohol is allowed in Eastpointe Parks

~ Pavilions booked less than 10 business days from the reservation date will be assessed a \$25 surcharge.

~ There is no water hook ups at the parks

Pavilion Rules & Policies

This receipt acts as your permit for the facility rented, please have it on you at your event.

Park Usage: Permits are done on a first come first serve basis. Reserving a pavilion gives the renter exclusive use of the pavilion during designated reservation period. Kennedy Park Large (East & West) Pavilion hosts two separate rentals under the same pavilion.

Rental Time: Rentals are for a 6-hour period between the hours of 10:00 a.m. and 9:00 p.m. Additional hours may be purchased if needed prior to the rental date, at least 10 business days in advance.

Cancellation Policy: Reservations canceled 5 business days (Monday – Friday) in advance will receive a 50% refund. Refunds will not be given due to inclement weather.

Restrooms: Facilities will be open to the public only during the hours of a scheduled rentals.

Clean-up: Pavilion area must be left in a clean and orderly condition upon departure. Trash receptacles are provided to all park goers. At the end of your event notify the staff before departure.

Items/Services not permitted: DJ's, bands, glass, ground fires, fireworks, fryers or vehicles are NOT permitted on park grounds. Alcohol IS permitted in Eastpointe Parks; alcohol IS NOT permitted in Roseville Parks.

Entertainment Policy: ANY form of additional entertainment (petting farms, dunk tanks, inflatables) MUST be from one of the Recreation Authority Center's approved vendors and require an additional form to be completed and returned to our office NO LATER THAN 10 BUSINESS DAYS (Monday – Friday) PRIOR TO THE SCHEDULED EVENT. Forms will not be accepted within the 10 business days (Monday – Friday) of the scheduled event. Entertainment on park premises that is not approved will be asked to be removed. Any form of entertainment requiring water usage will be assessed a \$20 water fee, due when the entertainment form is returned.

The Recreational Authority reserves the right to cancel or alter your reservation. "I agree that I shall be responsible for all actions of my guests or participants and explicitly acknowledge that the Recreational Authority of Roseville & Eastpointe is not responsible for the supervision of my guests or participants.

By signing this contract, I understand that I am responsible for this event rental. I am personally responsible to be on-site during the entire rental period. If any issues arise during my rental, the Recreational Authority staff members will address them with me directly. I agree to the terms of the contract and understand that the Recreational Authority has the right to refuse future rentals if deemed necessary due to contract violations.

PLEASE NOTE: Weekdays are Mon-Thurs / Weekends are Fri-Sun

UPDATED RENTAL RATES

Ball field Reservations Begin: First Monday in May

	Baseball/Softball/Soccer Practice Fees	Baseball/Softball Games: Daylight Hrs (Excluding Tournaments)	Baseball/Softball Games: Nighttime Hrs** (Excluding Tournaments)	Soccer Games: Daylight Hrs	Soccer Games: Nighttime Hrs**
Teams Playing in Dept. Sponsored Leagues	NO FEE All teams registered through RSVL-EP Rec. Authority will be provided practice times (based on availability) <u>through the dept. staff</u> <u>member coordinating the league.</u>				
Residents/Schools	\$20 / permit / date (2 hour block) Managers/Coaches ONLY may request permits for 1 weekday (Mon-Thurs) & 1 weekend (Fri-Sun) 7 days out from date of booking. ➤ Practice Permits will not be issued for fields on Fri/Sat/Sun prior to a scheduled weekend game.	\$75 / game w/ field preparation ➤ Field prep. for weekend games will take place on Fridays. Only 1 game day may be booked per weekend (Fri-Sun) per field. Additional Games: \$25 No field prep.	\$125 / game w/ field preparation ➤ Field prep. for weekend games will take place on Fridays. Only 1 game day may be booked per weekend (Fri-Sun) per field. Additional Games: \$50 No field prep.	First Game: \$75 Second Game: \$25 Limit 2 games	First Game: \$125 Second Game: \$50 Limit 2 games
Non-Residents	\$25 / permit / date (2 hour block) Managers/Coaches ONLY may request permits for 1 weekday (Mon-Thurs) & 1 weekend (Fri-Sun) 7 days out from date of booking. ➤ Practice Permits will not be issued for fields on Fri/Sat/Sun prior to a scheduled weekend game.	\$100 / game w/ field preparation ➤ Field prep. for weekend games will take place on Fridays. Only 1 game day may be booked per weekend (Fri-Sun) per field. Additional Games: \$50 No field prep.	\$175 / game w/ field preparation ➤ Field prep. for weekend games will take place on Fridays. Only 1 game day may be booked per weekend (Fri-Sun) per field. Additional Games: \$75 No field prep.	First Game: \$125 Second Game: \$50 Limit 2 games	First Game: \$175 Second Game: \$100 Limit 2 games

*Baseball/Softball rentals scheduled for the weekend that require field prep. are subject to a \$200 maintenance call out fee.

**Definition of Nighttime Hours shall be for any part of the game that the field lights are needed.

Updated: June 10, 2016

PLEASE NOTE: Weekdays are Mon-Thurs / Weekends are Fri-Sun

UPDATED RENTAL RATES

	<u>Football</u> <i>Games: Daylight Hrs</i>	<u>Football</u> <i>Games: Nighttime Hrs**</i>	<u>Tennis</u> <i>Matches: Daylight Hrs</i>	<u>Tennis</u> <i>Matches: Nighttime Hrs**</i>	<u>Pavilions</u>	<u>Gazebo</u>
Teams Playing in Dept. Sponsored Leagues					Must be approved by staff <u>Baseball/Softball/Soccer:</u> 1 Free Mon-Thurs Rental allowed per team for the end of the season party	
Residents/Schools	Schools \$300 / game Residents \$400 / game <i>w/ field preparation</i>	Schools \$350 / game Residents \$500 / game <i>w/ field preparation</i>	\$10 (2 hour block)	\$50 (2 hour block)	**RENTALS ARE FOR A 6 HOUR PERIOD OF TIME** Non-Electric: \$50 Additional Hours: \$8/hour Electric: \$75 Additional Hours: \$10/hour *Additional \$25 if rented less than 10 business days in advance <i>(No fee for community school rentals)</i>	\$25 / hour (2 hour minimum)
Non-Residents	\$600 / game <i>w/ field preparation</i>	\$750 / game <i>w/ field preparation</i>	\$15 (2 hour block)	\$75 (2 hour block)	**RENTALS ARE FOR A 6 HOUR PERIOD OF TIME** Non-Electric: \$75 Additional Hours: \$8/hour Electric: \$100 Additional Hours: \$10/hour *Additional \$25 if rented less than 10 business days in advance	\$50 / hour (2 hour minimum)

**Definition of Nighttime Hours shall be for any part of the game that the field lights are needed.

RARE SENIOR CENTER Presents:

Parking Lot Dance Party

\$5.00 per car

Thursday, September 15, 2022

DJ Paul will be spinning tunes from
3:00—4:30 p.m.

Senior Center Parking Lot: 18185 Sycamore Street

“Free Refreshments”

Call 586-777-7177 for information.

*In case of inclement weather, the event will be
held indoors.



MOTHER & SON SKATE NIGHT

(90'S THEME)

DATE: Thursday, October 6
TIME: 5:30 - 8:00pm



Event to be held at: Great Skate - 29100 Hayes, Roseville

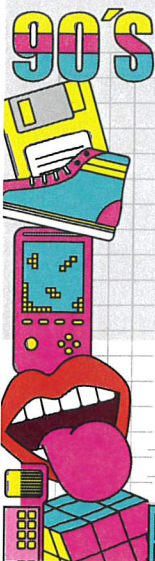
Oh Snap! It's time to introduce your O.G. to one of the greatest music and fashion eras! Come in your best 90's attire and get jiggy with it while skating the night away. So, what's the 411? Each guest receives admission, skate rental, pizza and pop dinner, and a special gift for the family. In addition, we will have a photo opportunity area for you to capture this awesome day with your son(s). Lastly, there will be a competition for the best dressed family, so show off that bling... we all know you will be looking super fly! All ages are welcome. Now let's bounce!

Resident: \$12 per person

Non-Resident: \$14 per person

***REGISTER BY Sunday, October 2nd**

NO TICKETS SOLD AT THE DOORS!



For more info contact the Recreation Authority

MURDER MYSTERY DINNER 80'S THEME

**FRIDAY, OCTOBER 21
6:00 - 9:00PM**

**RESIDENT: \$60
NON-RESIDENT: \$65**

Ages 21+ for this event

Poison Ratenstein is in town for a killer concert, but his fans may be looking for a refund after this twisted tour turns tragic with a murder and a mystery to solve.

Help the crowd and the detective figure out who ruined this totally tubular night, so everyone can like, take a chill pill. Grab your most righteous 80's concert gear to rock out in style while you solve a crime with your friends. Buffet dinner will be provided and served at 6:30pm. Each participant will receive (3) beer/wine tickets. ID'S WILL BE CHECKED AT THE EVENT.

MUST REGISTER BY SUNDAY, OCTOBER 9TH.

For more info call the Rec Authority at 586 445 5480



Open Swim

at Roseville High School
17855 Common Rd, Roseville

Mondays & Wednesdays

6:00 - 9:00pm

Children/Teens: \$3.00

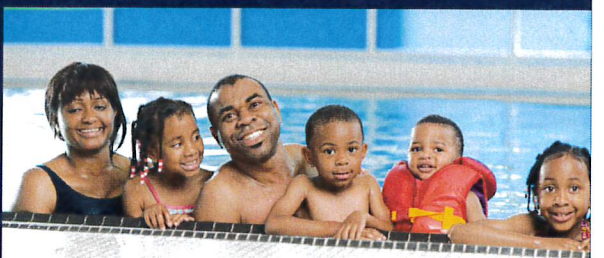
Adults: \$5.00

Seniors (55+): \$4.00

Cash only. Bills greater than \$20 will not be accepted

Now that the weather is getting colder, keep the swimwear out for open swim this fall! Children 12 and under must be accompanied by a parent/guardian. Teens ages 13-17 must bring a student ID card or drivers licenses. Locker rooms will be made available. Guest will not be permitted to lock up belongings overnight. Lap swim will be made available. Outside pool toys will not be permitted. There will be pool toys provided. Pool entrance is located at door #13 at Roseville HS. Disposable swim diapers are not permitted. Approved Flotations Devices (AFD) are permitted. Please visit website for permitted diapers and AFDs.

Interested in working Open Swim?
Email Sara at sfrederick@rare-mi.org
for hiring opportunities!



Info:
rare-mi.org
(586) 445-5480



Adaptive Dance Club

Dance Program for individuals with special needs

Ages 16 +

Join us on Friday evenings for a groovy time learning various line dances each week!

Along with some light exercise and movement, participants will have the opportunity to be social and meet some new friends. Comfortable clothes and athletic shoes are suggested. Anyone that needs 1 on 1 assistance following directions must bring someone to assist them.

FRIDAYS 7:30 - 8:30pm

October 7 - November 18

(no class 10/28)

Drop-in: \$5 per participant to be paid to the instructor
CASH ONLY



For more information contact the Recreation Center
at 586.445.5480

THE ROSEVILLE-EASTPOINTE SENIOR CENTER
INVITES YOU TO THE

SENIOR RESOURCE FAIR

RARE MULTI-PURPOSE ROOM
FRIDAY, OCTOBER 14TH—10 AM TO NOON

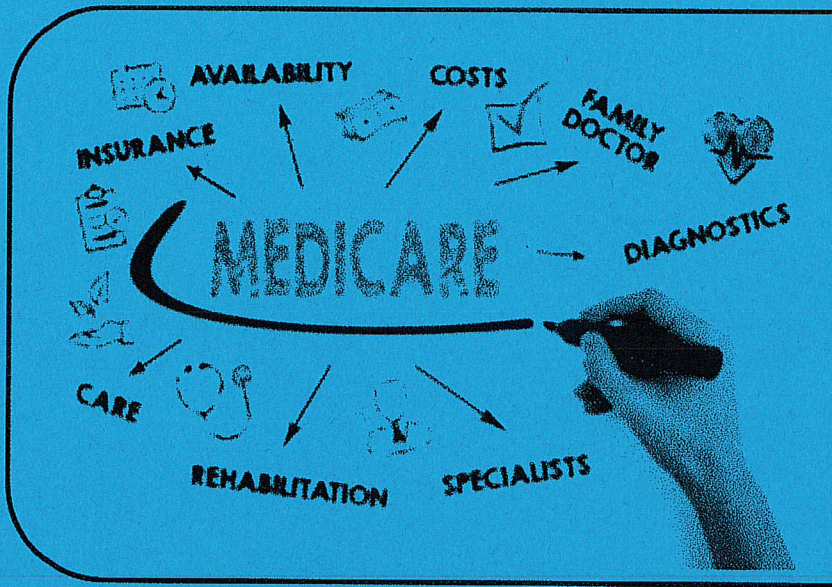
This event will include a variety of vendors, healthcare providers, local businesses, Medicare/Medicaid information, Macomb County Health Department, blood pressure testing, flu shots, and much more.
There will be door prizes, refreshments, and giveaways too!

Stop by the Senior Center to pickup valuable information from the following participants:

AETNA BETTER HEALTH
AMERICAN HOUSE EAST I
CARE PATROL
FAIRWAY DRUGS—FLU SHOTS
GRETCHEN HEINRICH—CHILDREN'S AUTHOR of "STRONG STRINGS"
HOME MD HOUSECALL SERVICES
INTERFAITH VOLUNTEER CAREGIVERS
MACOMB COUNTY HEALTH DEPARTMENT
MEDICARE MEDICAID ASSISTANCE PROGRAM
OAKMONT PARKWAY
PACE SOUTHEAST MICHIGAN
SAM'S CLUB



RARE Senior Center
18185 Sycamore
Roseville, MI 48066
586-777-7177



Medicare
Open Enrollment
help is available at the
Roseville Eastpointe
Senior Center!

The annual Open Enrollment Period for changes in Medicare coverage runs from October 15 through December 7
Changes you make this fall take effect January 1, 2023

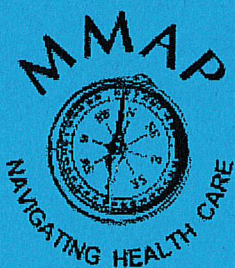
Do you want to review your choices for 2023 Medicare health and drug coverage? Appointments for free, unbiased counseling with the Michigan Medicare Medicaid Assistance Program (MMAP) are available in fall 2022:

Roseville-Eastpointe Senior Center

Monday, November 14

Thursday, November 17

Monday, November 21

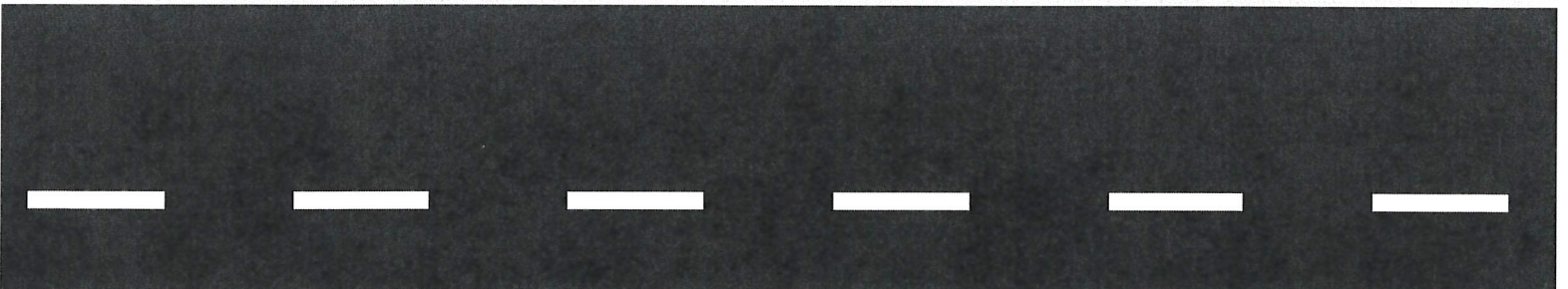


Call MMAP at (800) 803-7174
to schedule a meeting to review your
coverage options with a MMAP counselor



Halloween Decorating Contest

We are back again to check out your Halloween themed yards in Eastpointe & Roseville! Nominate your house or a home in your neighborhood that truly has the Halloween spirit! Call our office at (586)445-5480 to submit a house for consideration; all nominations must be received by Friday, October 28th! Nominated houses cannot win more than once in a three-year time frame. The winning house will be recognized at the November Recreation Authority Board Meeting.





Recreation Authority of Roseville & Eastpointe
18185 Sycamore, Roseville 48066
www.rare-mi.org 586-445-5480

A RARE NIGHTMARE

Friday, October 28th 6:00 - 8:30pm

Recreation Authority Center

Bring the family out to the Recreation Authority for some Halloween fun!

- variety/magic show
- spooky dance
- pumpkin patch and decorating
- ghoulish games and crafts
- haunted trail
- food vendors
- trunk-or-treat at 8:00pm in the east lot to finish off the night (will be held inside if inclement weather)



FEES:

Child Resident (ages 3-17): \$12 per person
Child Non-Resident (ages 3-17): \$15 per person

Adult Resident: \$5 per person
Adult Non-Resident: \$8 per person
Children 2 and under are FREE

Maximum of 300 tickets for event night. No tickets will be sold at the door.



FOR MORE INFO CONTACT THE
REC AUTHORITY AT 586.445.548

19th Annual "Rumblin' Tumblin' Pumpkin Rolldown"

Tuesday, November 1st - 6:00pm SHARP!

SPINDLER PARK SLEDDING HILL
19400 Stephens, Eastpointe

Have you ever seen a pumpkin roll down a sledding hill? Join us for the crazy, fun event and see how gravity works on your carved pumpkin!

Pumpkins in event must be carved



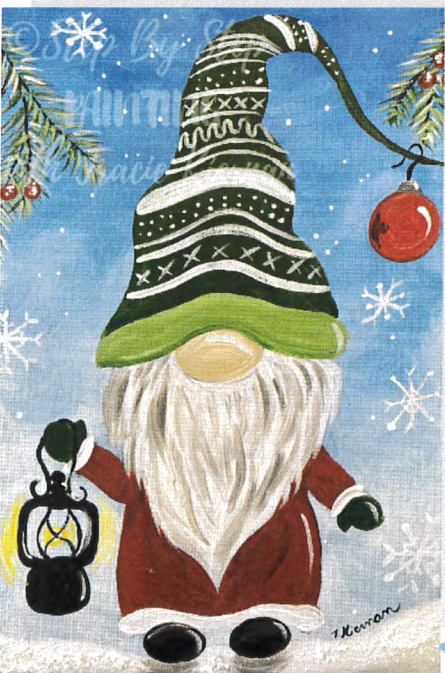


Painting with the Girls

(Winter themed painting)

Wednesday, November 9th
6:30 - 8:30pm

Back by popular demand, we will be hosting seasonal painting classes for the ladies! All ages/skill levels are welcome to register. All supplies and instruction will be provided by the Recreation Authority. Light refreshments will be provided.



Resident: \$20 per person
Non-Resident: \$25 per person
REGISTER BY Wednesday, November 2nd

**For more info contact the Recreation
Authority at 586.445.5480**



44TH ANNUAL BIG BIRD RUN

Sunday, November 13th

RACES:

10K (6.2 miles) • 5K (3.1 miles) • 1 Mile (fun run)

First run starts at 10:00am, start and finish lines are at the Recreation Authority Center located at 18185 Sycamore Street, Roseville. All participants in the 10K and 5K will receive a finishing medal and long sleeve race shirt. Participants in the 1 Mile (fun run) will receive a finisher ribbon and a long sleeve race shirt. The top 3 overall male and female finishers in the 10K Distance and 5K Distance will receive grand awards. Awards will be given to the top male and female finishers in the 10K and 5K in each age division. As always, our famous turkey raffle and prizes are here to stay.

Registration will be available on rare-mi.org or eastsideracingcompany.com

Registration fees:

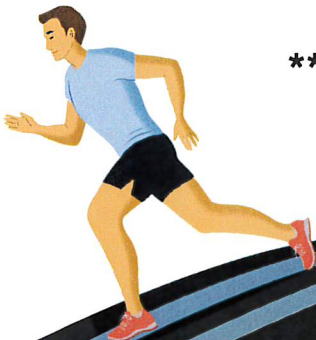
10K - \$40

5K - \$35

1 Mile - \$25

Race Day Fees - plus \$5

****Day of race, checks will not be accepted,
cash or credit/debit payments only****



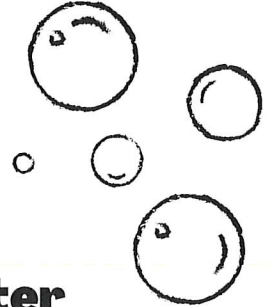


RECREATION AUTHORITY
18185 SYCAMORE, ROSEVILLE 48061
WWW.RARE-MI.ORG 586-445-5486

DADDY DAUGHTER DANCE

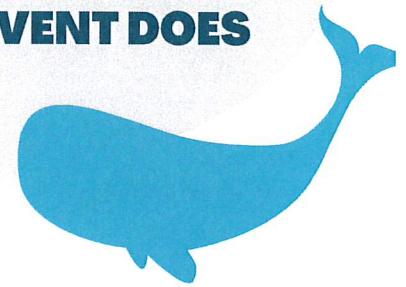
Friday, December 9 6:30-9:00pm

Event to be held at the Recreation Center



MAX OF 180 TICKETS FOR EVENT. NO TICKETS SOLD AT THE DOOR!

Dads bring your special little mermaid(s) to our "Under the Sea" themed dance! We will be "swimming" around all evening along with some sea creatures. Registration will include a buffet dinner, dancing, a group photo and a special gift for each girl at the end of the night! THIS EVENT DOES SELL OUT, SO REGISTER EARLY!



FEES:

RESIDENTS:

\$20 per person

NON-RESIDENTS:

\$25 per person





ADAPTIVE SNOWBALL DANCE



Formal Winter dance for individuals
with special needs



FRIDAY, JANUARY 20
6:30 - 9:00pm



**Event to be held at the
Recreation Center**

AGES 16+

Join us for an evening of dancing to your favorite tunes, while having the opportunity to meet new friends. The evening will include light refreshments, music and a photo opportunity. Dress in your best winter formal wear. Anyone that needs 1 on 1 assistance following directions must bring someone to assist them.

Registration is not required for assistants.



Resident: \$10 per person
Non-Resident: \$15 per person

**REGISTER BY WEDNESDAY,
JANUARY 18th**





208-101-801.000
A.F.L.

Plante & Moran, PLLC
19176 Hall Road
Suite 300
Clinton Township, MI 48038
Tel: 586.416.4900
Fax: 586.416.4901

INVOICE

City of Roseville
29777 Gratiot
Roseville, MI 48066

Date: September 27, 2022
Client No: 15420
Invoice No: 2192267
Page: 1

For Professional Services Rendered

Progress billing related to the June 30, 2022 audit of the Recreation Authority of
Roseville and Eastpointe

15,350.00

Balance Due

\$ 15,350.00 USD

Remittance information:

Check:

Plante & Moran, PLLC
16060 Collections Center Drive
Chicago, IL 60693

Wire Transfer:

Bank
Routing/ABA#
Bank Address

Account Number
Account Name

Bank of America
026009593
100 West 33rd Street
New York, NY 10001
9890996003
Plante & Moran, PLLC

ACH:

Bank of America
071000039
1401 Elm Street 2nd Floor
Dallas, TX 75202
9890996003
Plante & Moran, PLLC



Client Payment Portal:

<https://www.plantemoran.com/client-payment-portal>