

December 15, 2020

**REQUEST FOR PROPOSAL**  
**FOR**  
**SAN JUAN BAUTISTA TO HOLLISTER**  
**SANITARY SEWER FORCE MAIN**

**ADDENDUM NO. 1**

The following information and/or clarifications are provided and incorporated into the Request for proposal for San Juan Bautista to Hollister Sanitary Sewer Force Main:

1. On Page 1, the 5<sup>th</sup> sentence of the first paragraph shall be changed to:  
"Submittals will be accepted up until 2:00 PM PST, **January 15, 2021**".
2. Replace the **Schedule** section, page 12, in its entirety with the following:  
In order to meet the City's mandate from the Environmental Protection Agency to meet construction completion targets and to provide documentation for funding authorities, the following milestones are to be met:

• Design contract agreement	February 2021
• Preliminary design drawings (30% completion)	July 1, 2021
• Complete CEQA/NEPA work	November 2021
• Complete PS&E	December 1, 2021
• Submit all easement/property acquisition offer letters	December 1, 2021
• Confirm Estimate of Probable Construction Cost	December 8, 2021
3. Replace the **VII. Schedule** section, page 17, in its entirety with the following:

A draft schedule for this RFP is given below. Please keep in mind that schedules are subject to change.

Draft RFP Schedule	Target Date(s)
RFP distributed to prospective Consultants	Dec 8, 2020
Deadline for Notice of Intent	Dec 14, 2020
Deadline for RFP Questions and comments (2:00 PM)	Dec 28, 2020
Response to questions via email	Jan 8, 2021
RFP submissions due to City of San Juan Bautista (2:00 PM)	Jan 15, 2021
Selection Committee evaluate RFP submissions	Jan 18, 2021
Contract Award	February 2021
Issue Notice to Proceed	February 2021

### C. QUESTIONS AND ANSWERS

**1. Question:**

Has the City selected an Alternative presented on "Attachment E – Location Map"?

**Response:**

The City of San Juan Bautista has selected "Alternative 2" as the proposed alignment for the San Juan Bautista to Hollister Sanitary Sewer Force Main. (Alternative 2 is attached)

**2. Question:**

Are the "Material Sampling and Testing Work" services mentioned on Page 10 are services required during "Construction Support Services"?

**Response:**

No. The "Material Sampling and Testing Work" services referred to on Page 10 of this Request For Proposal include all "Material Sampling and Testing Work" required for preparation of Plan, Specifications and Estimate (PS&E).

**END OF ADDENDUM NO. 1**

**EACH CONSULTANT SHALL ACKNOWLEDGE RECEIPT OF THIS ADDENDUM NO. 1:**

- By completing the attached **ACKNOWLEDGEMENT** sheet marked as "**RETURN WITH THE PROPOSAL**" and submitting the completed sheet with the proposal.

Issued By: Julie Behzad, City Engineer

**REQUEST FOR PROPOSAL**  
**FOR**  
**SAN JUAN BAUTISTA TO HOLLISTER**  
**SANITARY SEWER FORCE MAIN**

**ADDENDUM NO. 1**

**ACKNOWLEDGEMENT**

I have received Addendum No. 1 to the Request For Proposal titled, "**SAN JUAN BAUTISTA TO HOLLISTER SANITARY SEWER FORCE MAIN**". I have read and understood the information stated in the Addendum.

\_\_\_\_\_  
Consultant's Signature

\_\_\_\_\_  
Date









\_\_\_\_\_  
Name (Printed)

\_\_\_\_\_  
Name of Company

**RETURN WITH THE PROPOSAL**

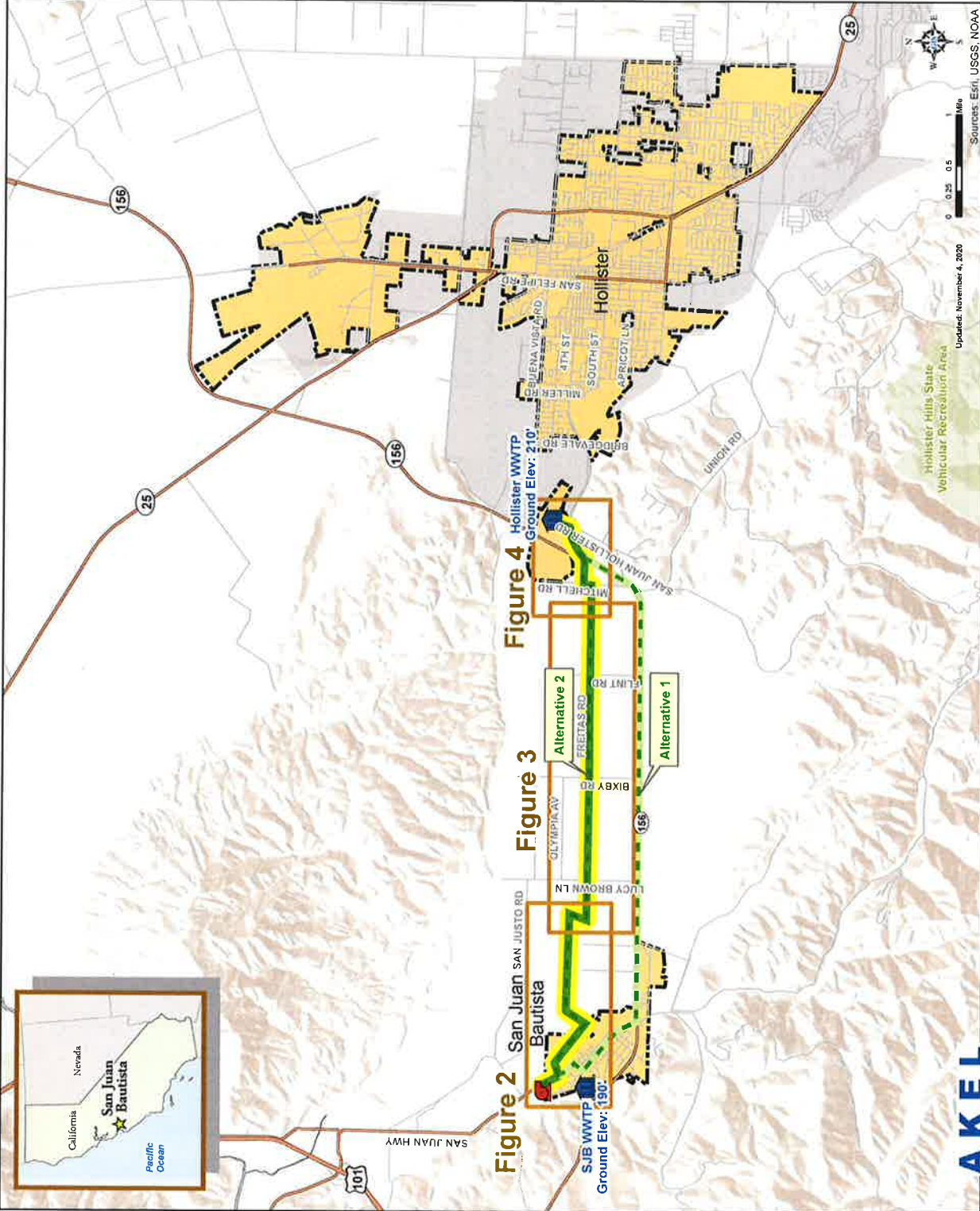


**Legend**

-  Potential Lift Station
-  Selected Connection Alignment
-  Major Highways
-  City Limits
-  Urbanized Area
-  Protected Open Space
-  Rivers/Streams
-  Waterbodies

**PRELIMINARY**









**Connection Alignment  
Key Map**



Update: November 4, 2020  
Sources: Esri, USGS, NOAA

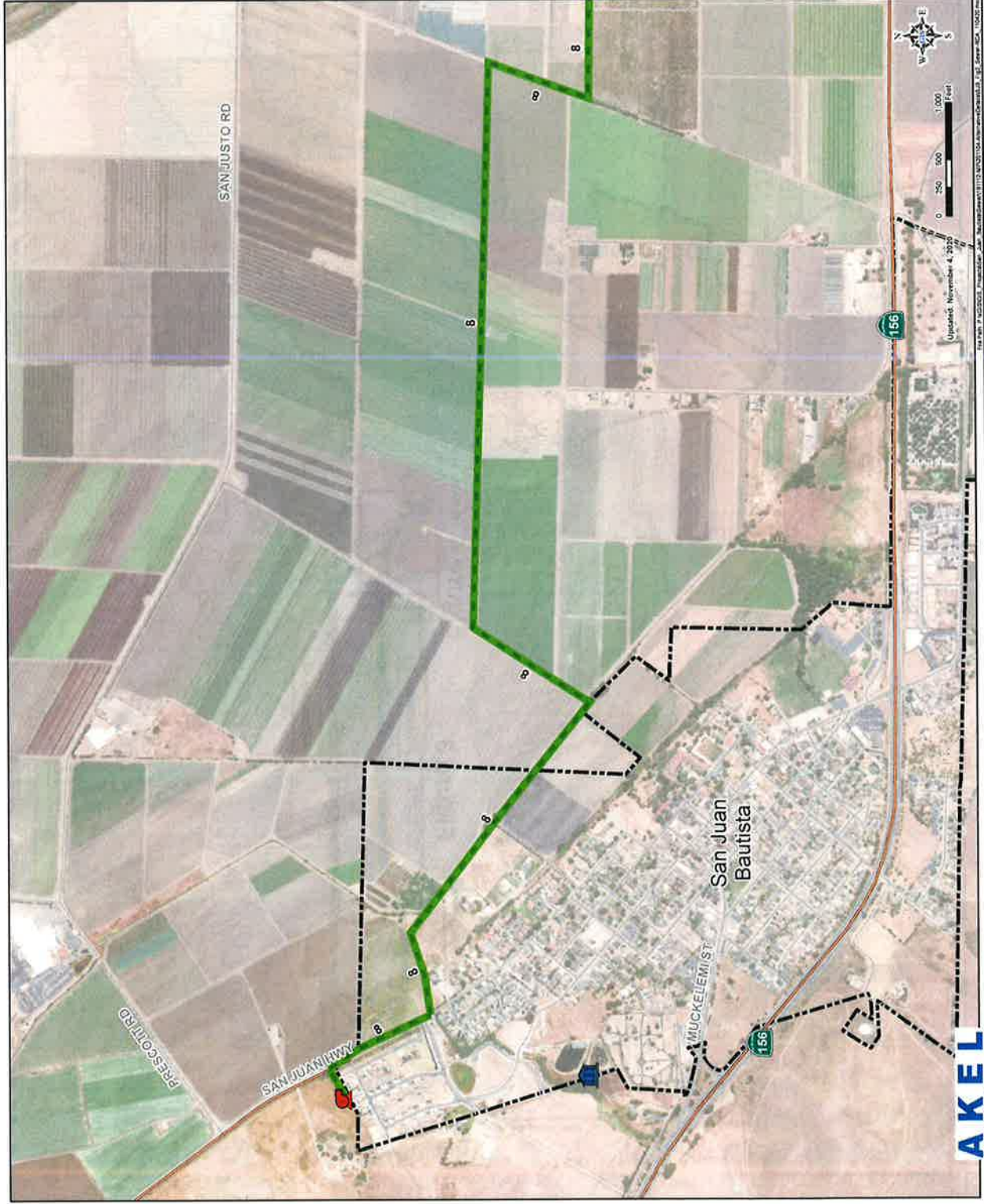


**Legend**

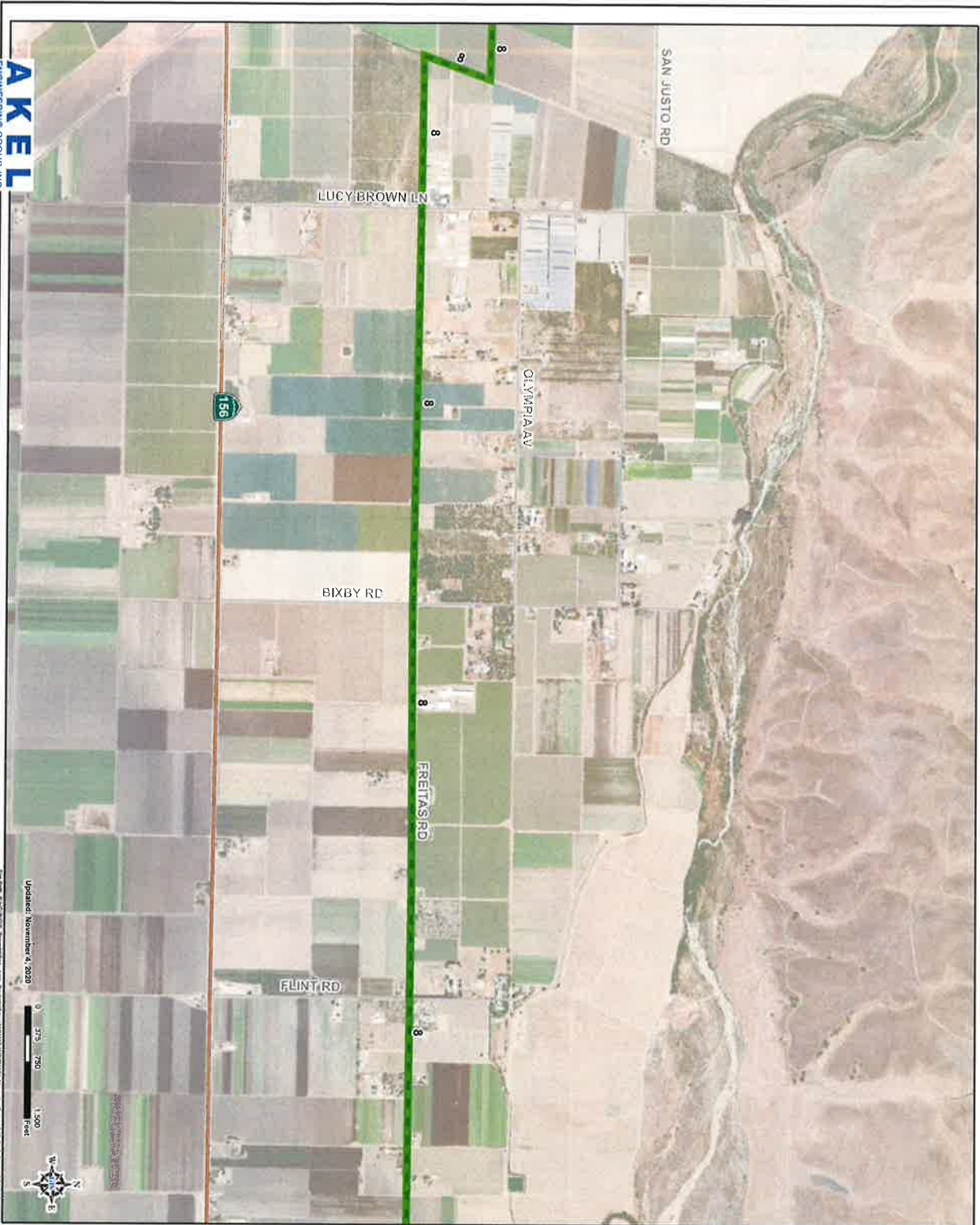
-  Potential Lift Station
-  Connection Alignment
-  Major Highways
-  City Limits
-  Urbanized Area
-  Protected Open Space
-  Rivers/Streams
-  Waterbodies

**PRELIMINARY**

**Figure 2  
Connection Alignment**



Updated, November 4, 2020  
Scale: 1" = 1000'  
North Arrow



Updated: November 9, 2020

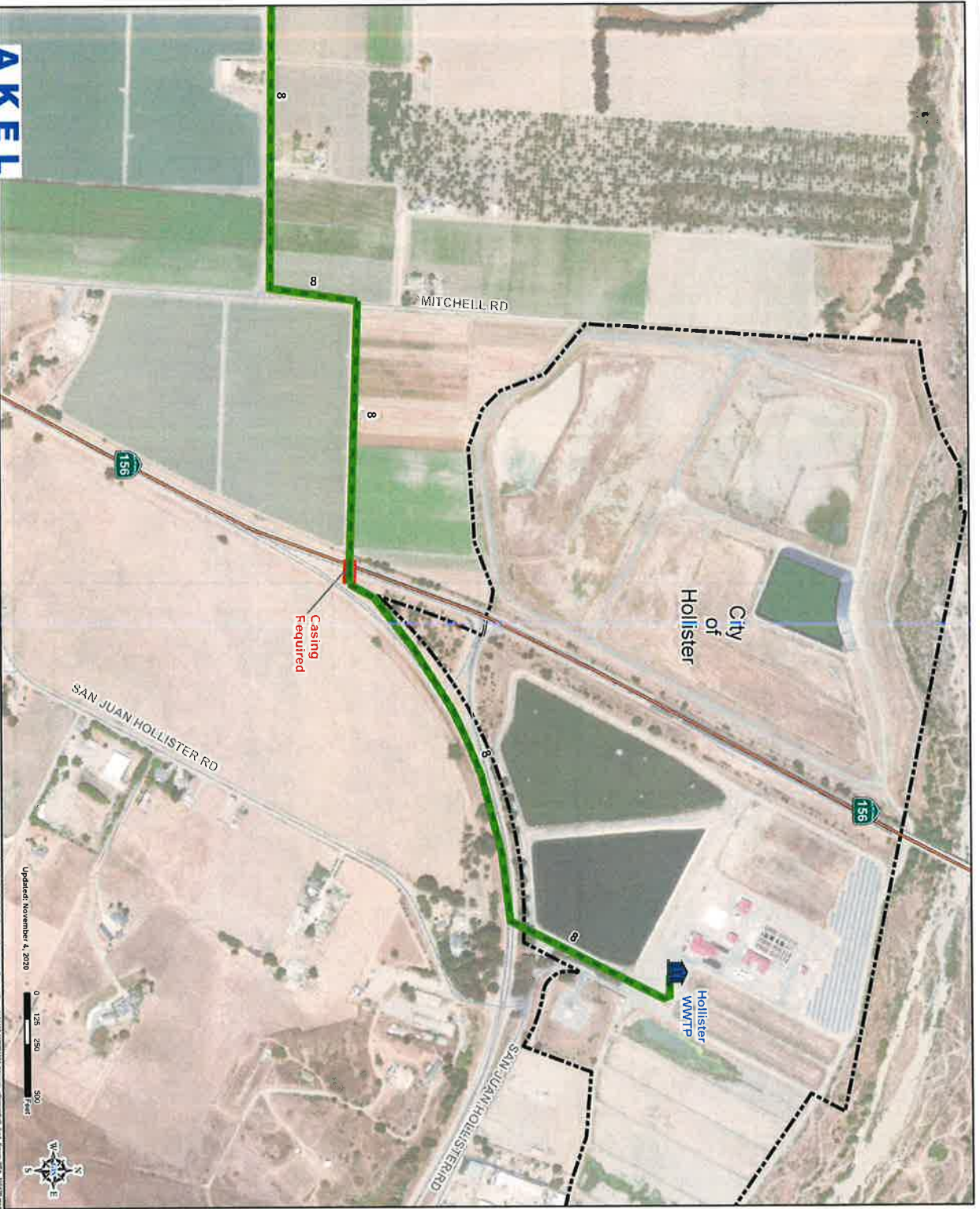


- Legend**
- Potential Lift Station
  - Connection Alignment
  - Major Highways
  - City Limits
  - Urbanized Area
  - Protected Open Space
  - Rivers/Streams
  - Waterbodies

**PRELIMINARY**

**Figure 3**  
**Connection Alignment**





Updated: November 4, 2020

0 125 250 500  
feet



- Legend**
- Potential Lift Station
  - Connection Alignment
  - Major Highways
  - City Limits
  - Urbanized Area
  - Protected Open Space
  - Rivers/Streams
  - Waterbodies

**PRELIMINARY**

**Figure 4**  
**Connection Alignment**

