

CITY MANAGERS MONTHLY REPORT

On-Board new City Engineer - MNS Engineering

Introducing both Engineering and support staff to community

Sharing project lists with staff and other contractors

Touring City infrastructure- emphasis on storm drain systems

Fire Advisory Committee met October 20th

Approved proposal for Feasibility study update (city share = \$3,500)

Approved dates for 2-day public discussion in January

Interviewing Deputy City Clerk candidates the week of November 15

Four qualified candidates out of the nine that applied

CITY MANAGERS MONTHLY REPORT

Public Safety – Law Enforcement

Dedicated Deputy- remains on Sunday-Thursday shift

Unable to meet with Sheriff this month

3-hour wait for a deputy- shoplifting suspect at Windmill

4-hour wait for a deputy- business open door

Private Security

Continue the 4 officers per day, 7 days a week

2 officers 4- 12 AM shift and 2 officers 12- 7 AM shift

City Code Enforcement – does fluctuate- worked 6 AM to 12 PM last Saturday

training private security to enforce parking and admin. Cites

Last week- 26 parking citations written, 6 warnings given

Normal hours

Friday, Monday Tuesday 12-6 PM

Saturday Sunday 12-7 PM (hour for lunch)

CITY MANAGERS MONTHLY REPORT

Wastewater Project Update

Received final comments from Hollister on sewer project design

Spent a lot of time on Permits

US FWS

State F&G

Streambed Alterations

Streambed "Take"

Introduced MNS to Stantec to complete the bid package

Meeting with growers to coordinate schedules for construction

Re-start growers conversation about connecting to the new main

Met with Hollister to begin discussion about the long-term contract

Submitted payment required by Settlement Agreement/First Quarter Report

EPA-STAG Grant kick-off (\$1 million)

CITY MANAGERS MONTHLY REPORT

WATER UPDATE

Received proposed agreements for new water import

District Proposed different water quality standards than MOU

Modified/Clarified City Water needs reducing pro rata share

Loosened up language allowing City to self finance

Postponed work on the design until agreements have been executed

Backflow device Compliance efforts in October

New rates went into effect November 1

CITY MANAGERS MONTHLY REPORT

1.3 Summary of Water Rate Recommendations

Table 1 shows a summary of proposed water rate recommendations.

Table 1 - Proposed Water Rates

| Water Rates | FY 21-22 | FY 22-23 | FY 23-24 | FY 24-25 | FY 25-26 | FY 26-27 |
|---------------------------------|-----------------|-----------------|-----------------|-----------------|-----------------|-----------------|
| | <i>Existing</i> | <i>Proposed</i> | <i>Proposed</i> | <i>Proposed</i> | <i>Proposed</i> | <i>Proposed</i> |
| Volumetric Rate \$/1000 gallons | \$6.35 | \$7.05 | \$8.04 | \$9.17 | \$9.63 | \$10.12 |
| Monthly Base Rate | \$55.76 | \$65.91 | \$75.15 | \$85.68 | \$89.97 | \$94.47 |

Press Release went out October 24, 2022

October billings had a bi-lingual notice

Attachment A

New Schedule of Water Rates

| | Effective 11/1/2022 | Effective 7/1/2023 | Effective 7/1/2024 | Effective 7/1/2025 | Effective 7/1/2026 |
|------------------------------------|------------------------|-----------------------|-----------------------|-----------------------|-----------------------|
| Monthly Base Chg | \$65.91 | \$75.15 | \$85.68 | \$89.97 | \$94.47 |
| Volumetric Rates (\$/1,000 Gal) | \$7.05 | \$8.04 | \$9.17 | \$9.63 | \$10.12 |

Each customer pays both a flat monthly base charge and a volumetric charge based on their metered water usage.

The City's Utility Assistance Program is still available to City residents until September 2023

CITY MANAGERS MONTHLY REPORT

Urban Growth Boundary (“UGB”) Sphere of Influence (“SOI”) Committee

Invitations to talk about UGB-SOI sent to 80-parcel owners 10.04.22

Parcels adjacent to City Boundaries

Parcels within the 2016 SOI

Met with 3 Property Owners

4-Committee members met November 2, 2022


Good discussion about greenbelts and County role

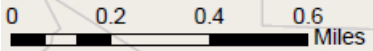
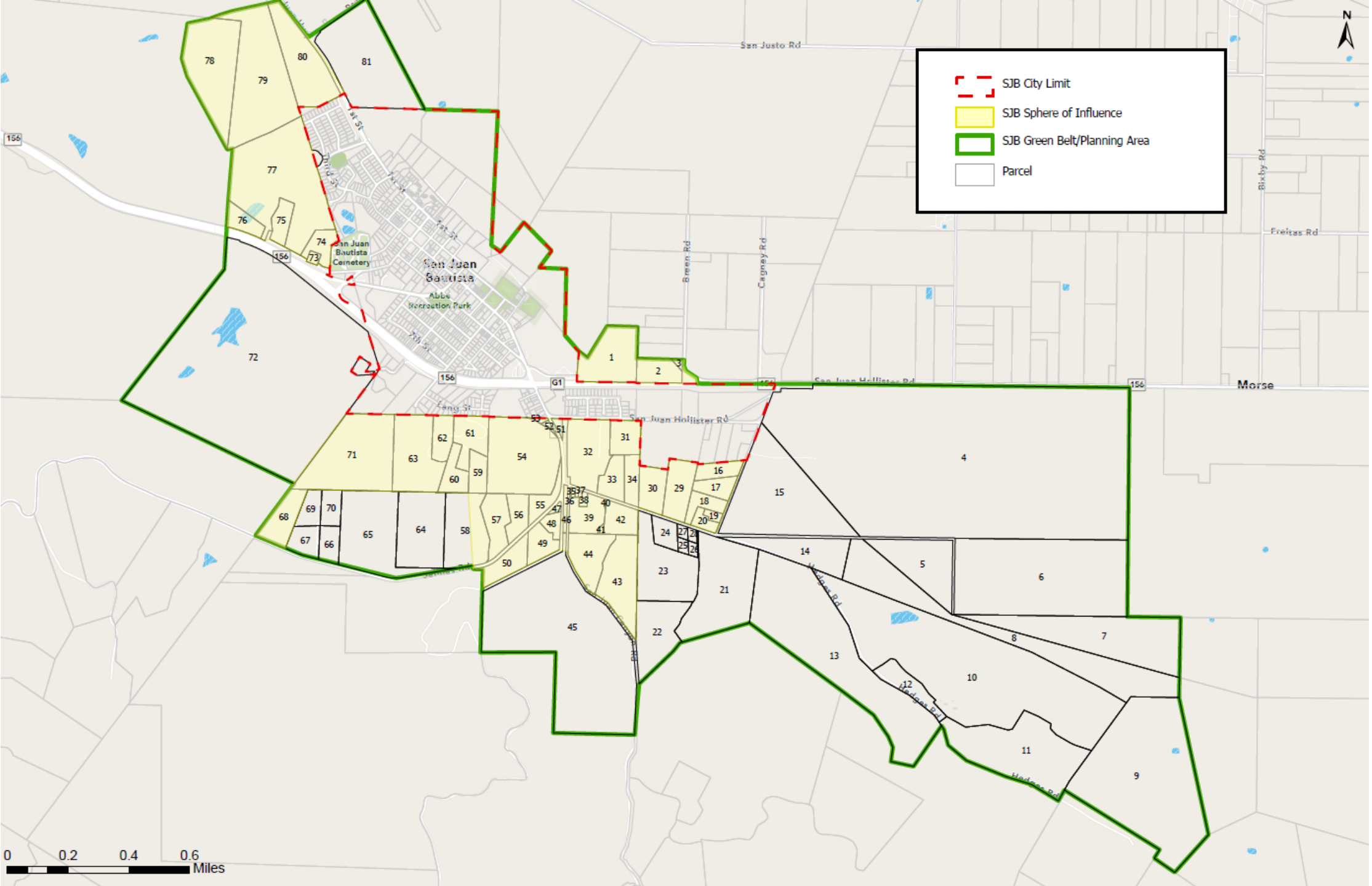
Ventura County- strong role; City has tight boundaries

SB County not so tight- might want a little larger boundary

Drew up a map with SOI, and Greenbelt properties

ID’d proposed SOI and Greenbelt

-  SJB City Limit
-  SJB Sphere of Influence
-  SJB Green Belt/Planning Area
-  Parcel



CITY MANAGERS MONTHLY REPORT

Safety Committee met 10.21.22

County office of Emergency Services

State has approved the Multi Jurisdiction Hazard Guide

Hired staff to provide public CERT Training

Commercial Truck Enforcement

Portable Message Boards are up

Letter sent to growers

Talked w/Cal Trans about Google Maps

Chief Del Campo Fire Dept Update

Block Party Permits

CITY MANAGERS MONTHLY REPORT

Midnight Express-

Huge impact on legal and planning staff

Trying to resolve invoices and deposits

New Public Agency Accounting Software

New Chart of Accounts

January 1 kick-off

Joint meeting with Mission, ASJBUSD and State Parks

Active Transportation Plan

draft being circulated

joint Planning Commission/City Council workshop in January

Gas Station moving forward now