

# South Burlington Existing Conditions

Climate Action Plan Task Force January 26th, 2022

# Understanding the City of South Burlington

- When choosing which actions to take to reduce emissions and become more resilient to climate change impacts, it is important to understand your community to ensure actions are tailored to South Burlington.
- Identifying characteristics of South Burlington will ensure we focus on the right actions.
- Ensure that actions and pathways are equitable for South Burlington residents

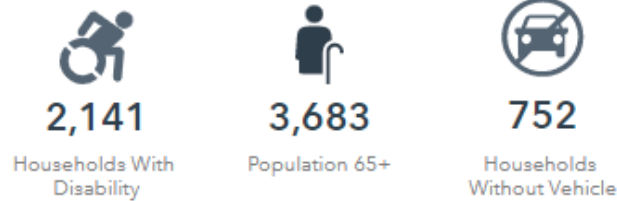
# Contents

- Impacted Communities/At Risk Populations
- Population Trends
- Housing
- Land Use
- Transportation
- Heating
- Next Steps

# General Demographic Information and At-Risk Communities

**8,801** Households    
 **2.17** Avg Size Household    
 **41.8** Median Age    
 **\$77,052** Median Household Income    
 **\$336,769** Median Home Value    
 **119** Wealth Index    
 **109** Housing Affordability    
 **31** Diversity Index

## AT RISK POPULATION



## POVERTY AND LANGUAGE



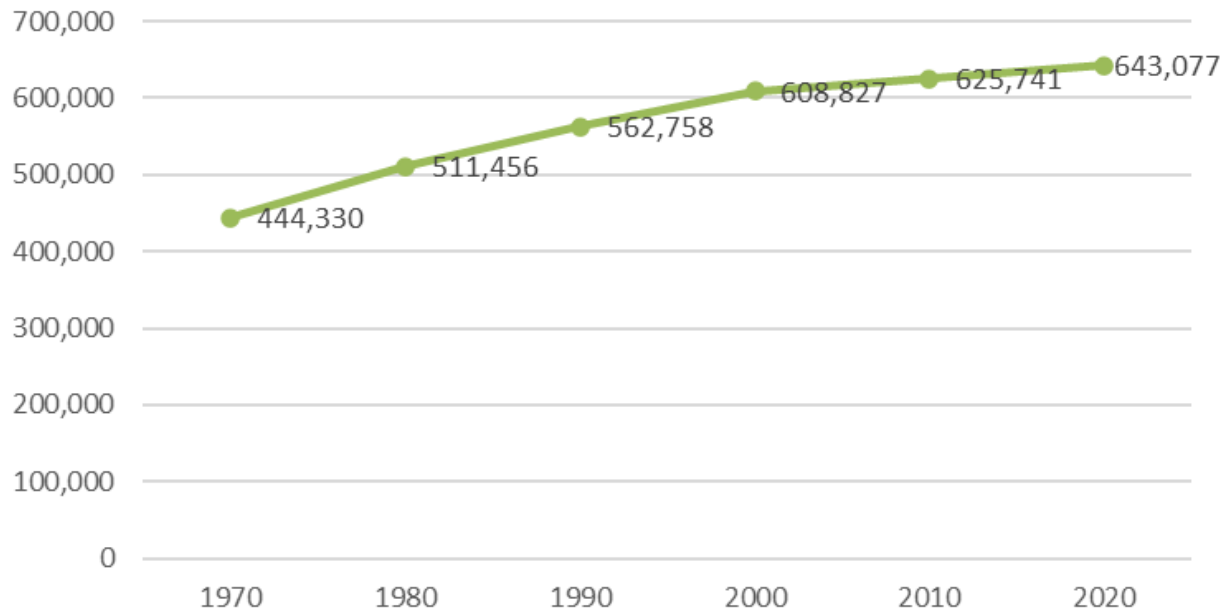
## POPULATION AND BUSINESSES



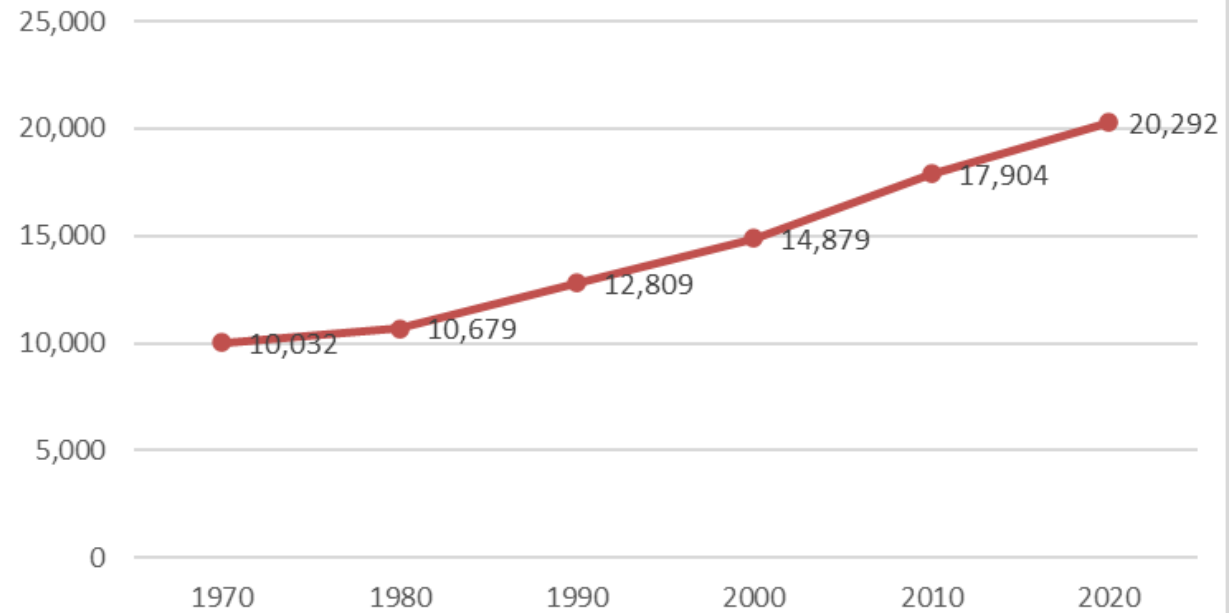
Language Spoken (ACS)	Age 5-17	18-64	Age 65+	Total
English Only	2,142	10,796	3,267	16,205
Spanish	69	293	17	379
Spanish & English Well	69	289	17	375
Spanish & English Not Well	0	0	0	0
Spanish & No English	0	4	0	4
Indo-European	105	857	173	1,135
Indo-European & English Well	105	784	168	1,057
Indo-European & English Not Well	0	73	5	78
Indo-European & No English	0	0	0	0
Asian-Pacific Island	109	259	63	431
Asian-Pacific Isl & English Well	88	196	63	347
Asian-Pacific Isl & English Not Well	21	53	0	74
Asian-Pacific Isl & No English	0	10	0	10
Other Language	0	130	16	146
Other Language & English Well	0	102	16	118
Other Language & English Not Well	0	28	0	28
Other Language & No English	0	0	0	0

# Population

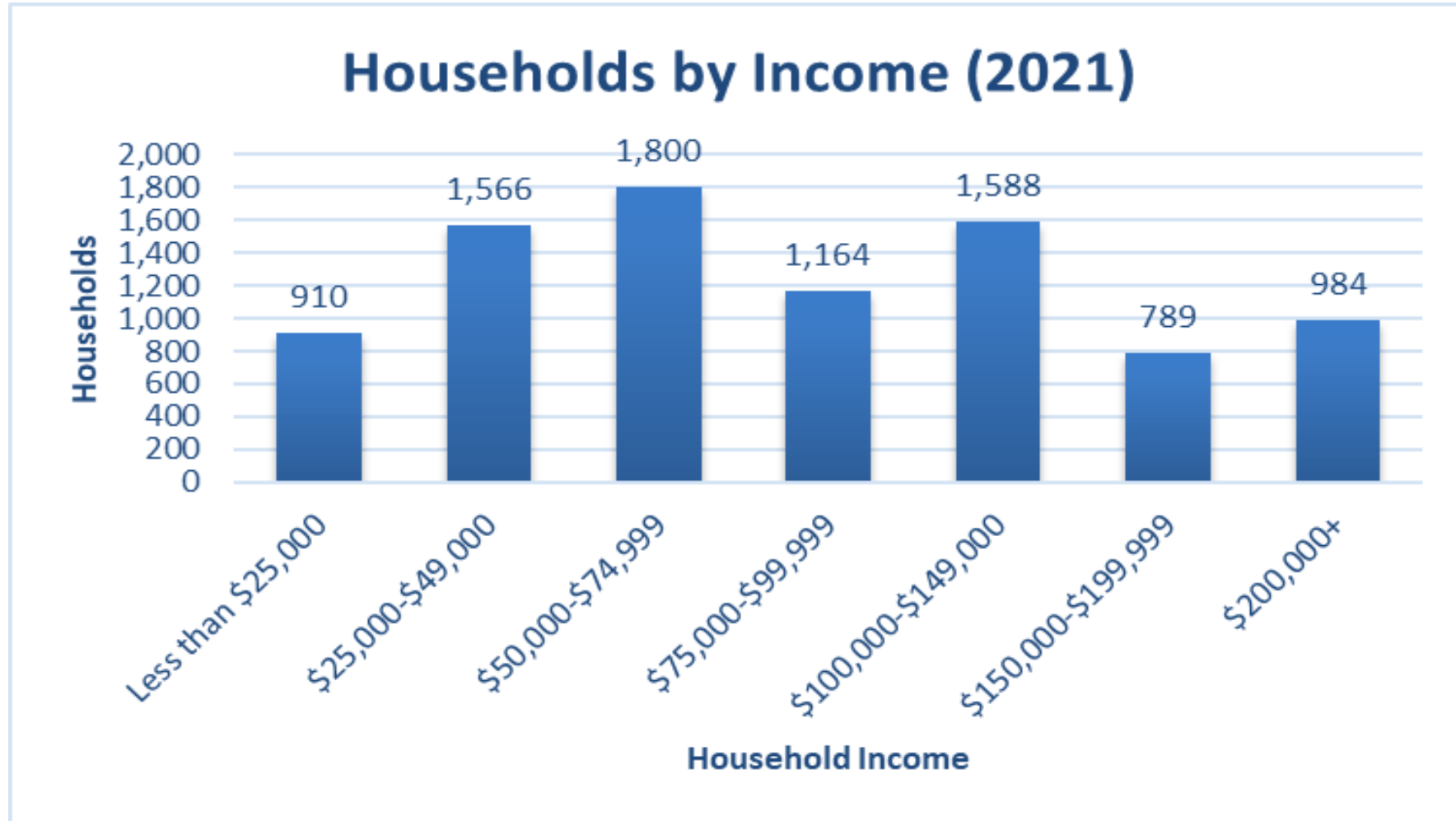
## Vermont Population



## South Burlington Population

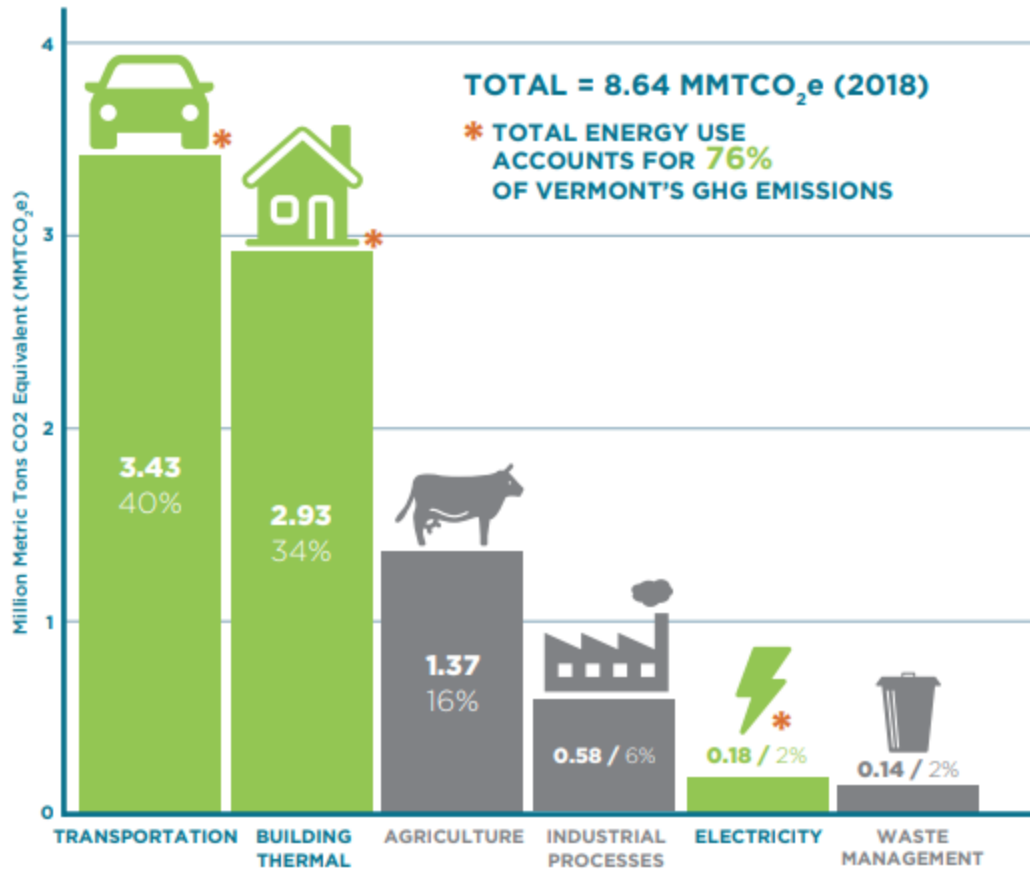


# Income



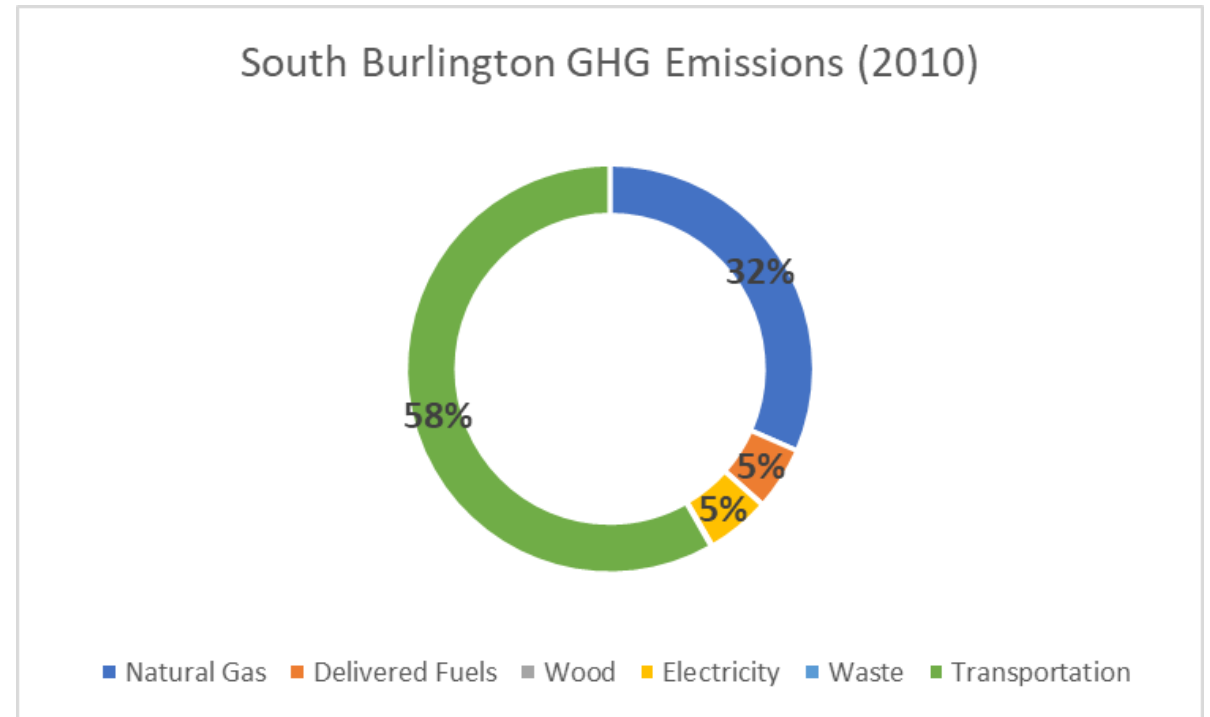
# GHG Emissions

## Vermont's GHG emissions by sector, 2018



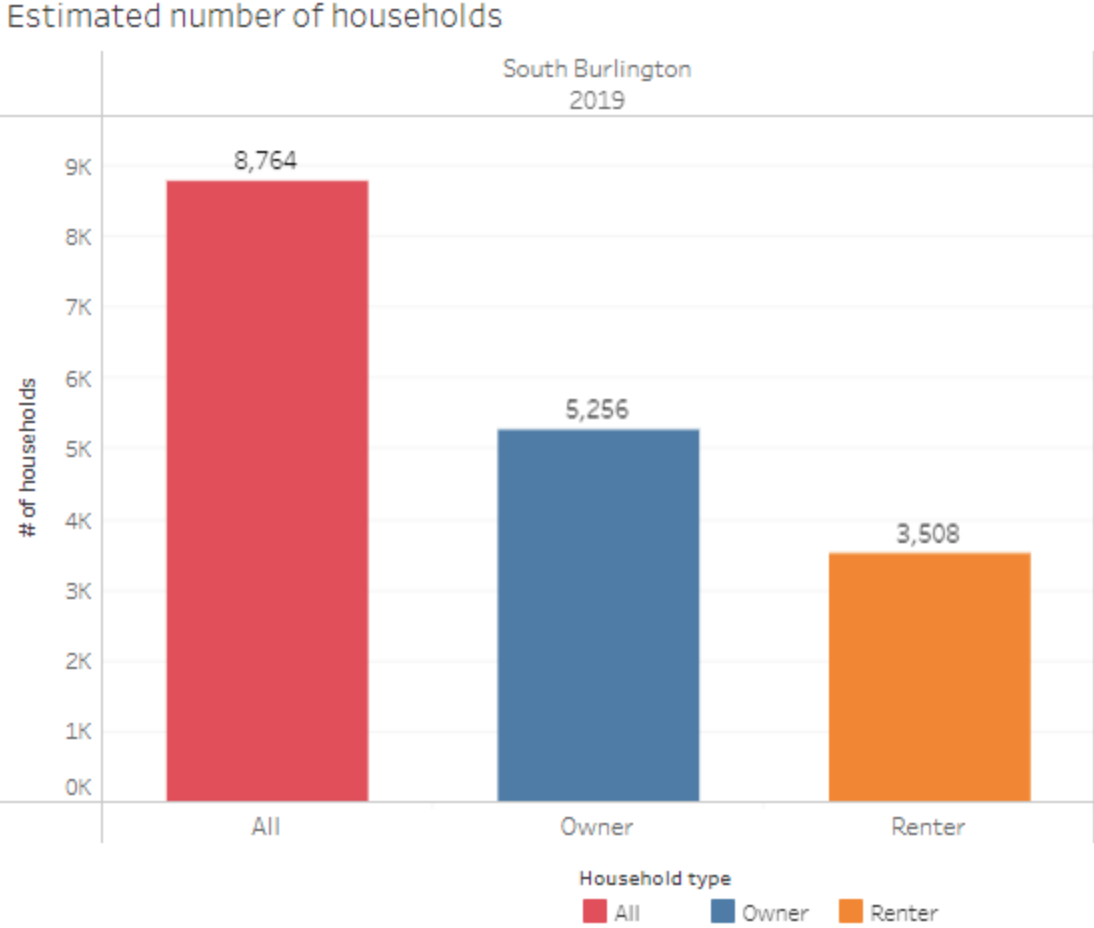
Source: Vermont Agency of Natural Resources, Vermont Greenhouse Gas Emissions Inventory and Forecast (1990-2017), 2021.

## South Burlington GHG Emissions (2010)



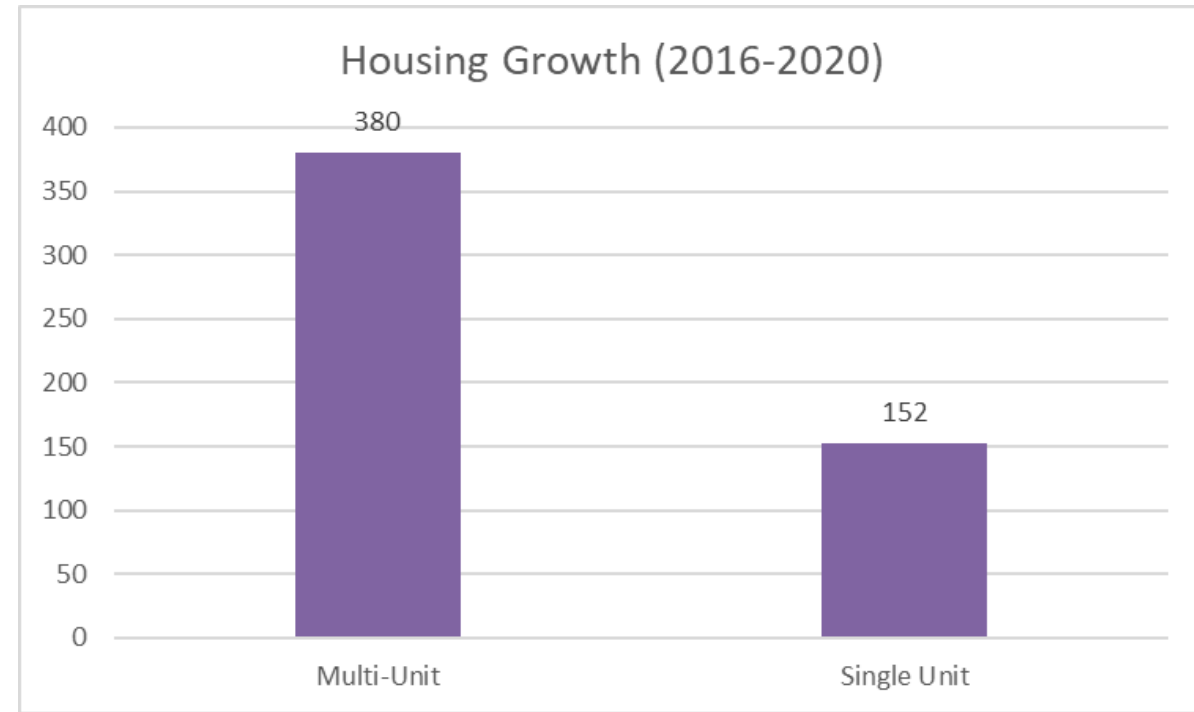
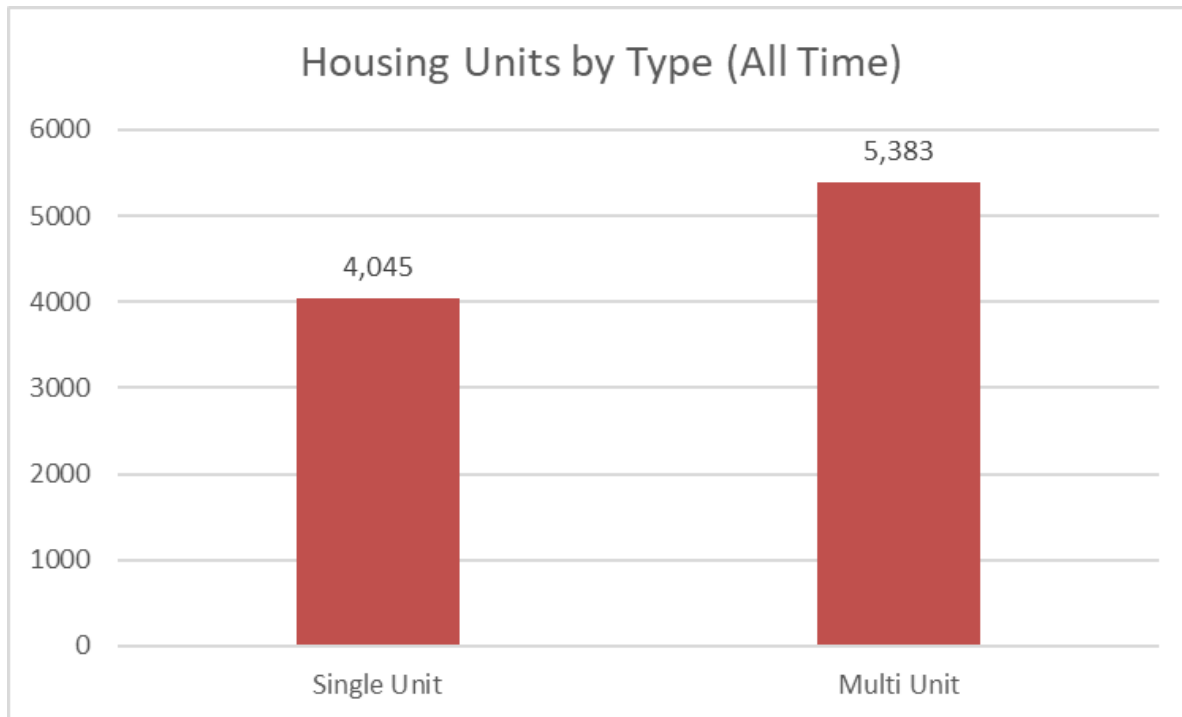
Source: Chittenden County RPC Inventory

# Tenure of Households



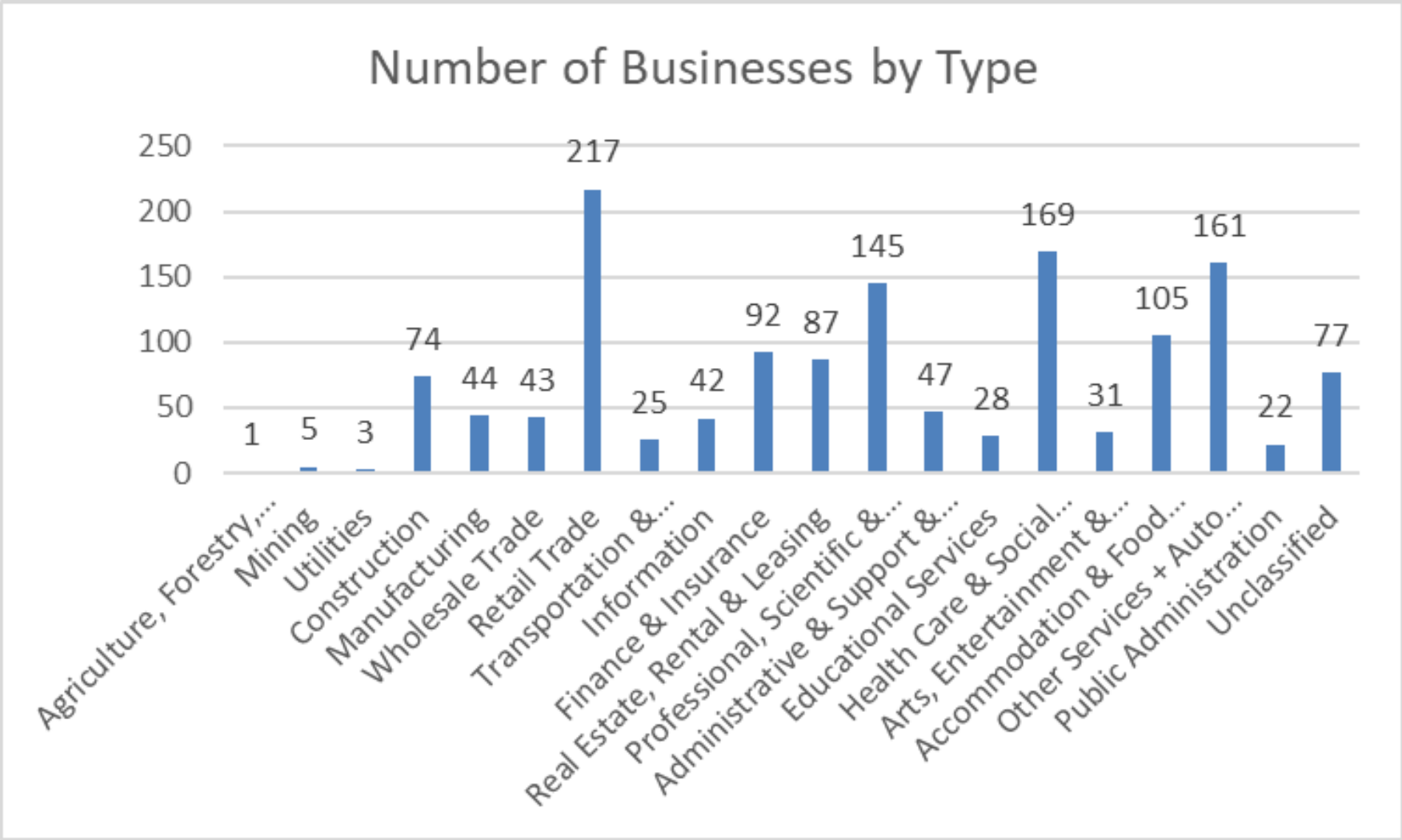


# Type of Housing

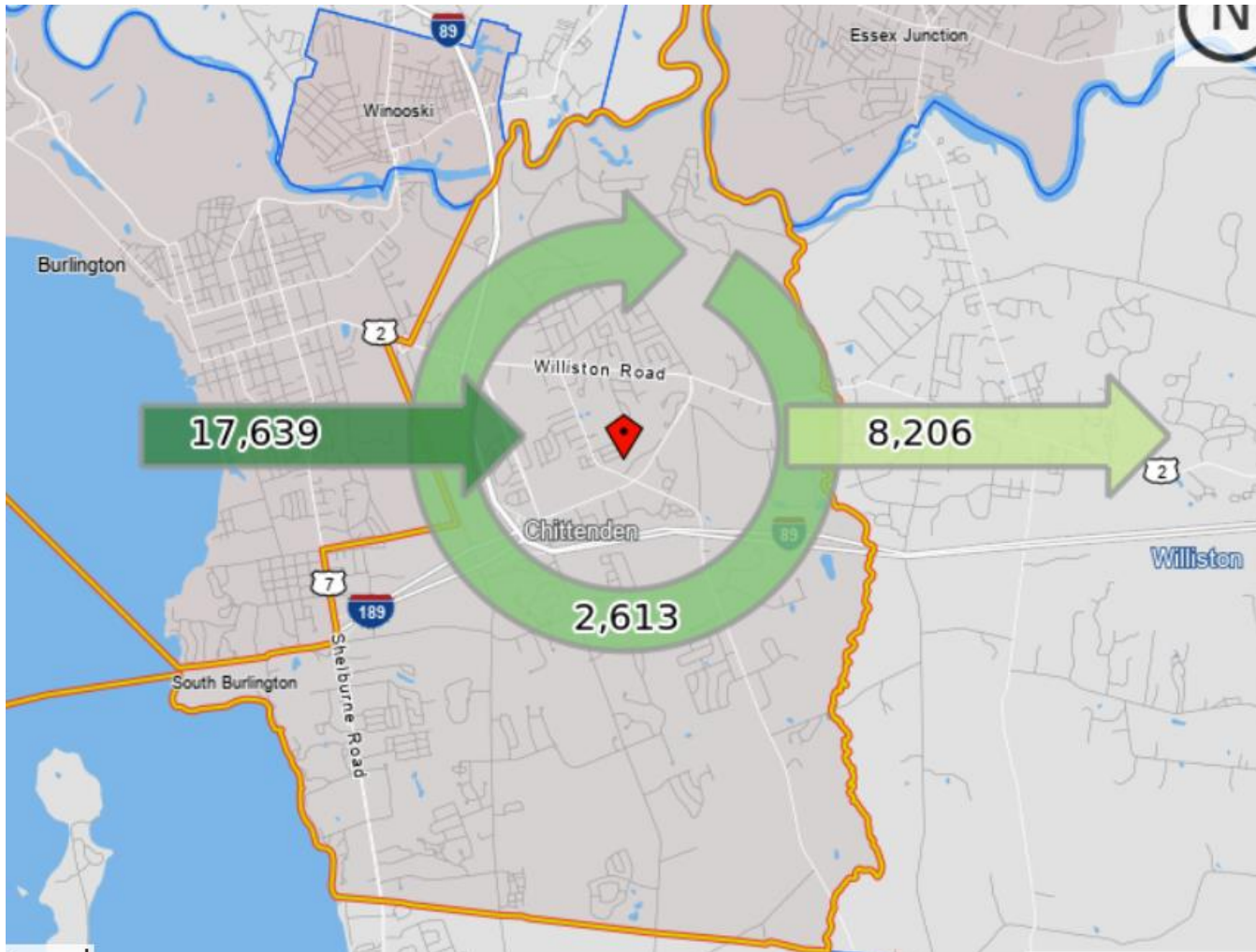


- 749 units or 8% of total units are affordable

# Business Summary

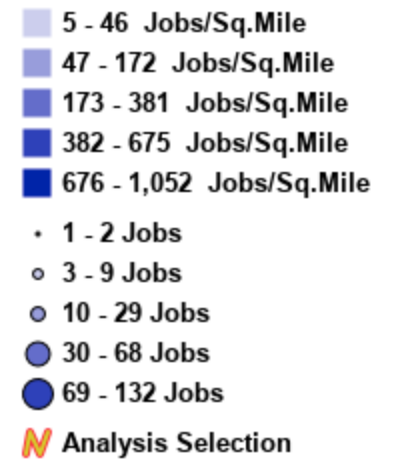
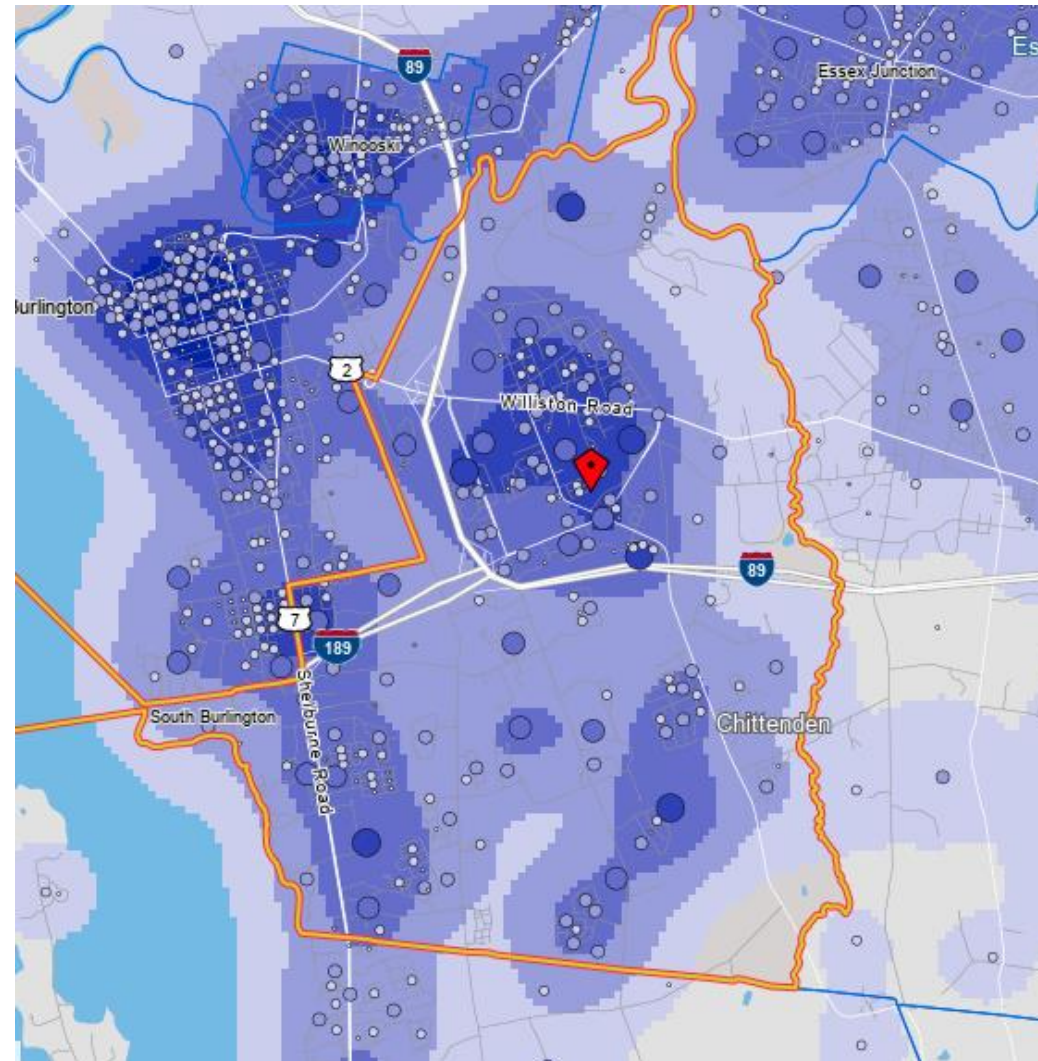


# Commuting Patterns and Daytime Population



Inflow/Outflow Job Counts (All Jobs)		
2019		
	Count	Share
<a href="#">Employed in the Selection Area</a>	20,252	100.0%
<a href="#">Employed in the Selection Area but Living Outside</a>	17,639	87.1%
<a href="#">Employed and Living in the Selection Area</a>	2,613	12.9%
<a href="#">Living in the Selection Area</a>	10,819	100.0%
<a href="#">Living in the Selection Area but Employed Outside</a>	8,206	75.8%
<a href="#">Living and Employed in the Selection Area</a>	2,613	24.2%

# Location of Workers

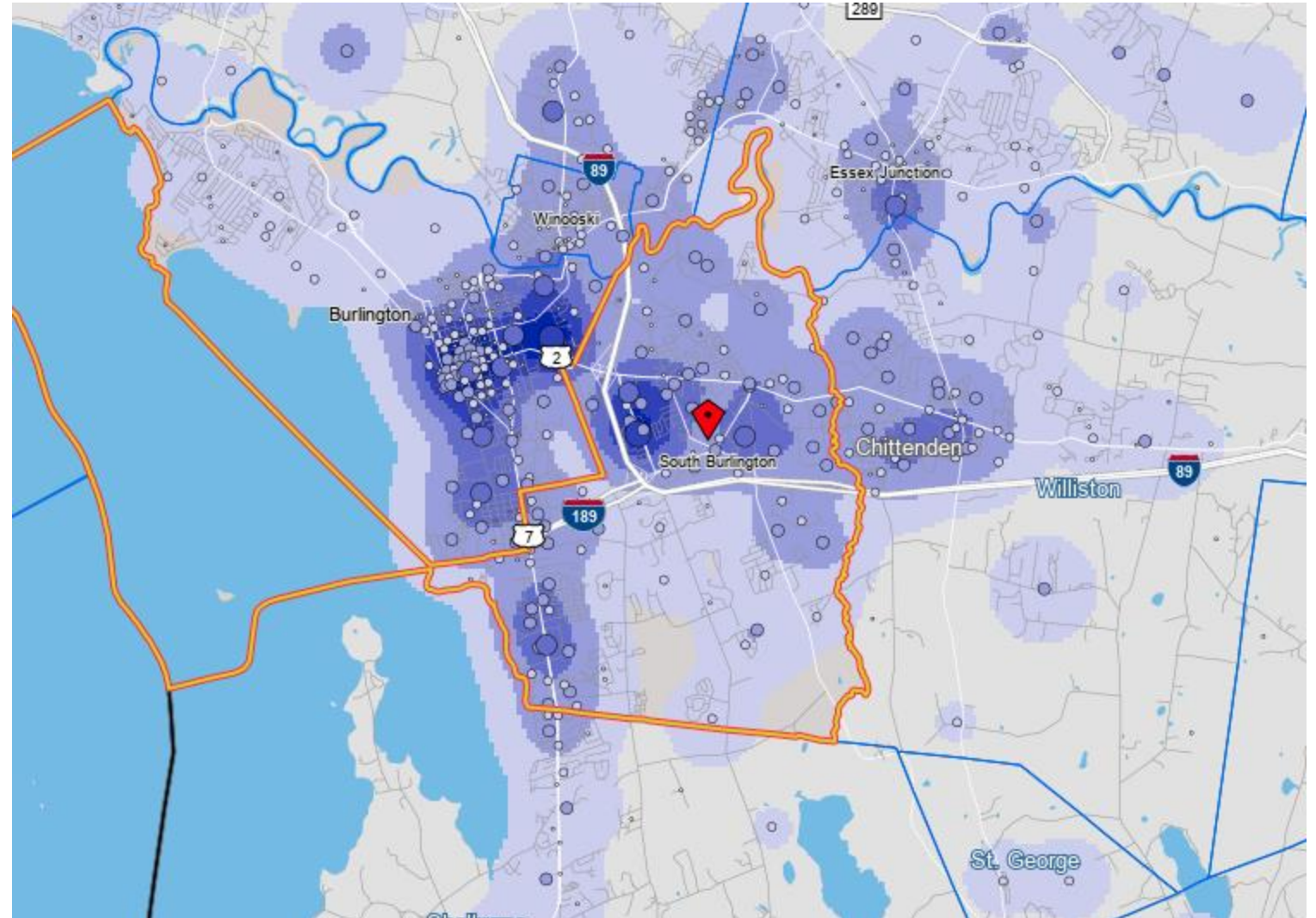
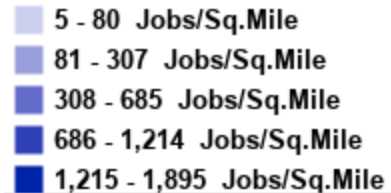




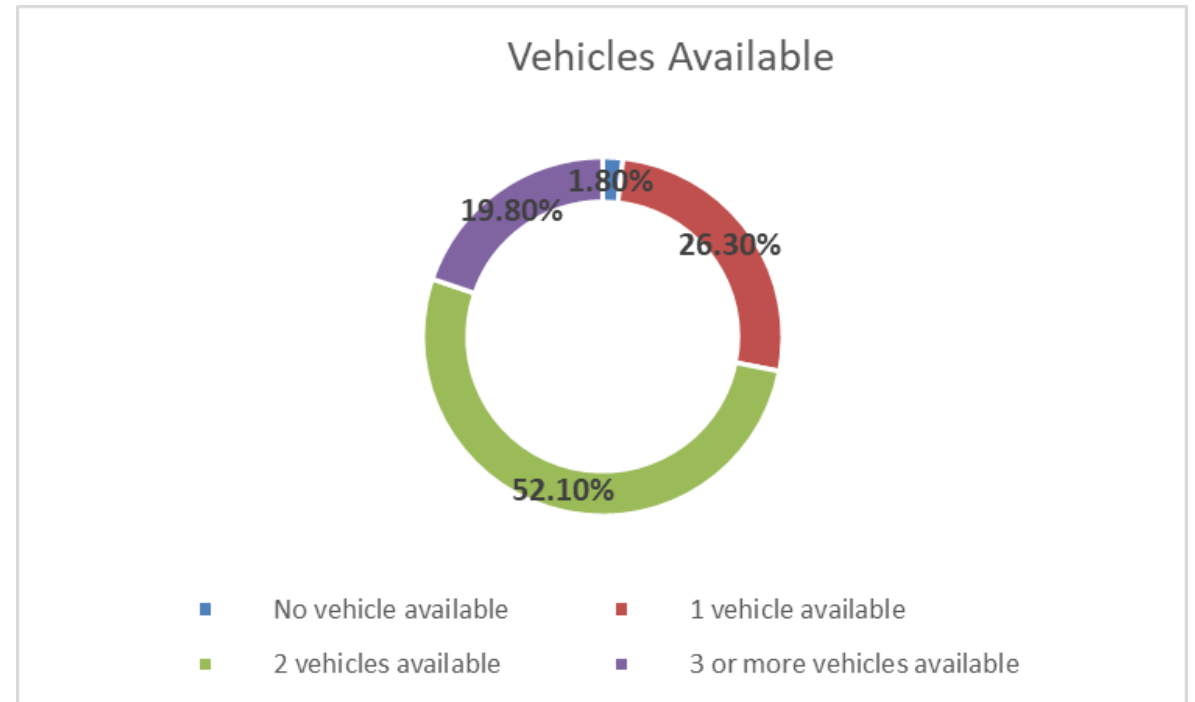
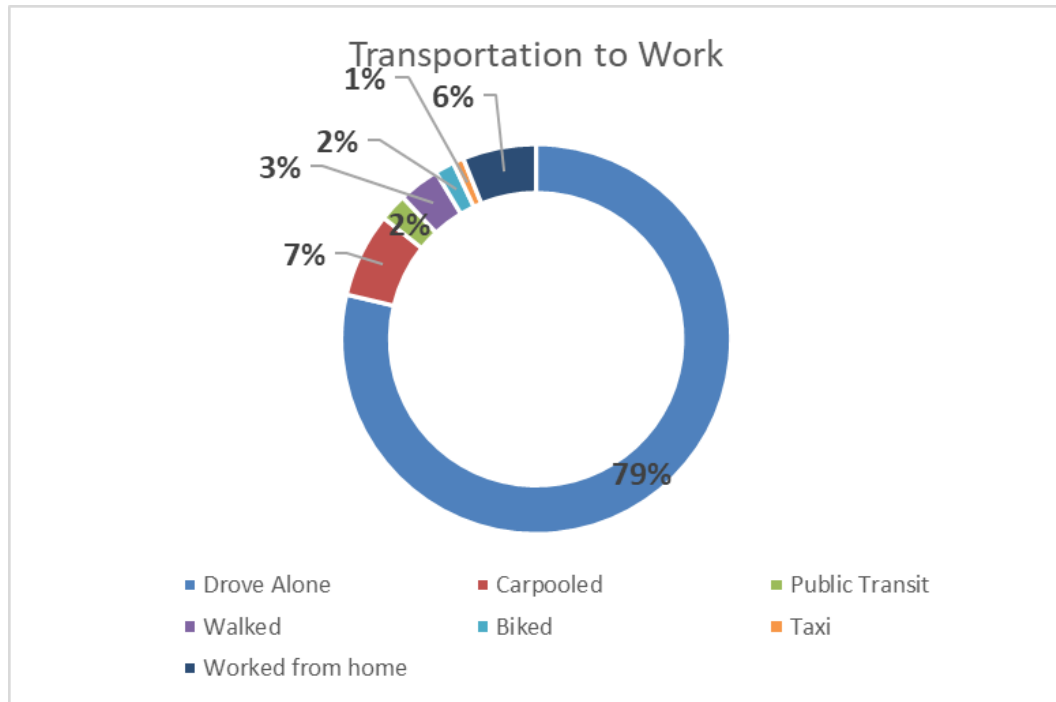
# Where do South Burlington Residents Work

Jobs by Distance - Home Census Block to Work Census Block

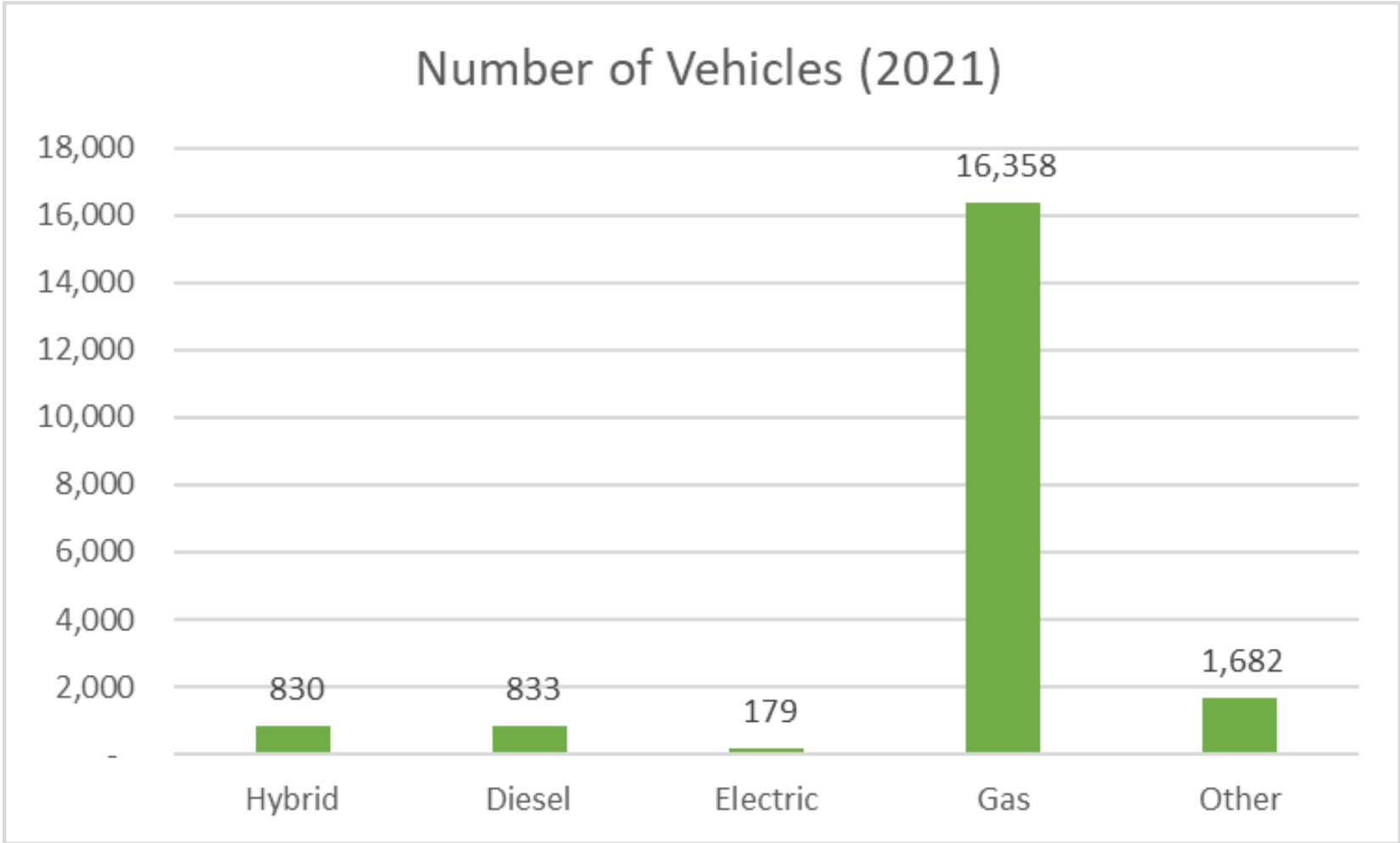
	2019	
	Count	Share
Total All Jobs	10,819	100.0%
■ <a href="#">Less than 10 miles</a>	8,731	80.7%
■ <a href="#">10 to 24 miles</a>	680	6.3%
■ <a href="#">25 to 50 miles</a>	661	6.1%
■ <a href="#">Greater than 50 miles</a>	747	6.9%



# Transportation

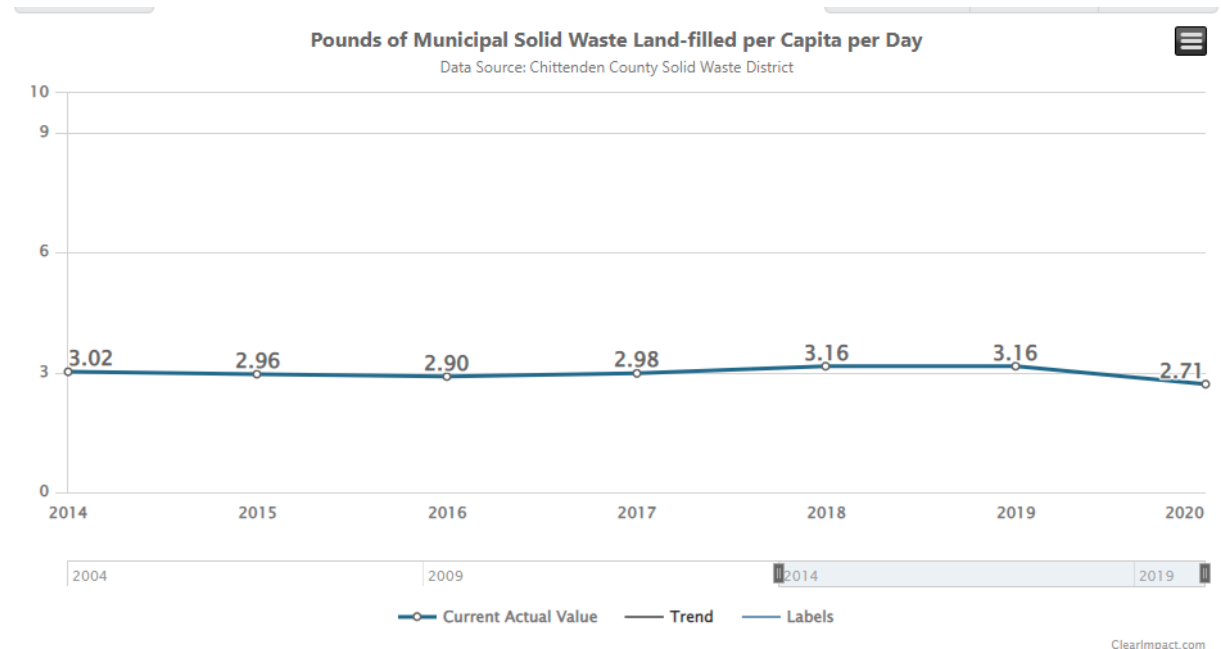


# Type of Vehicle



# Waste

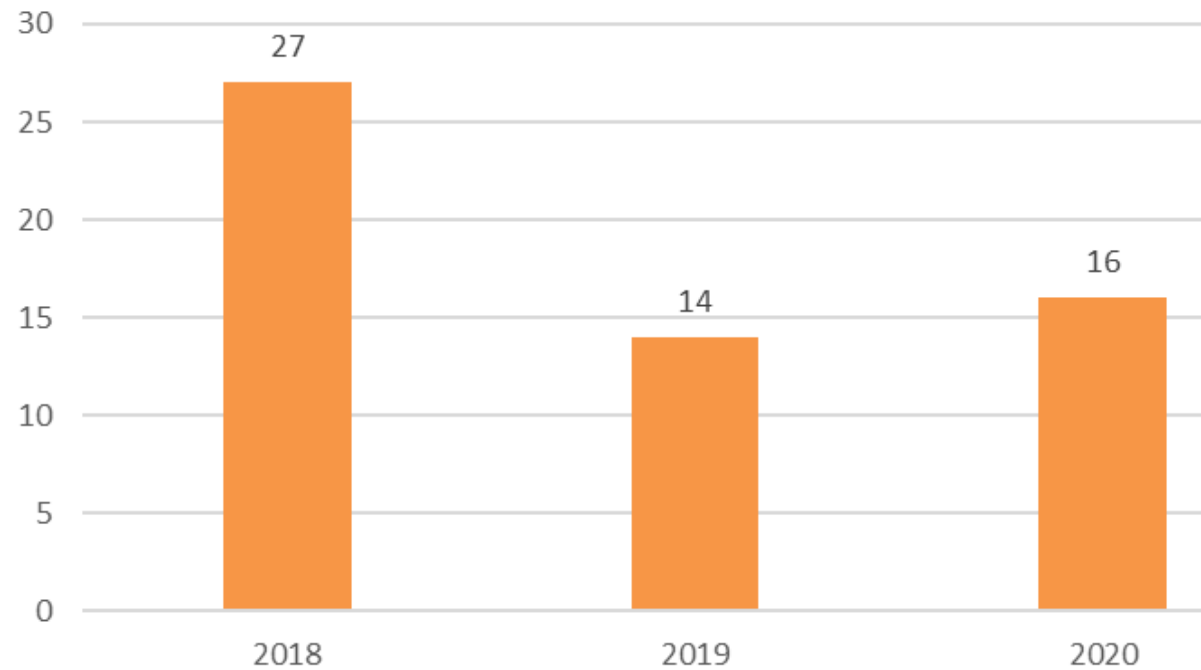
- 2 wastewater treatment facilities
- Less than 5% percent of City residents have on-site septic
- Solid waste



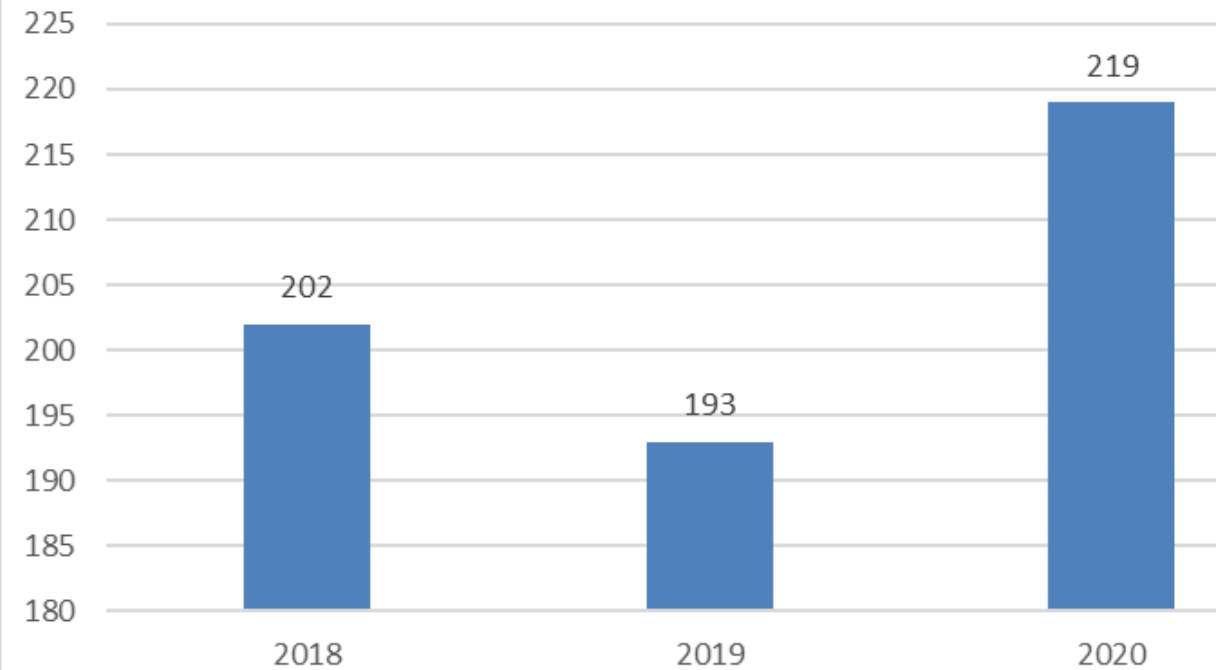


# Heating

## Heat Pump Hot Water Heaters Installations

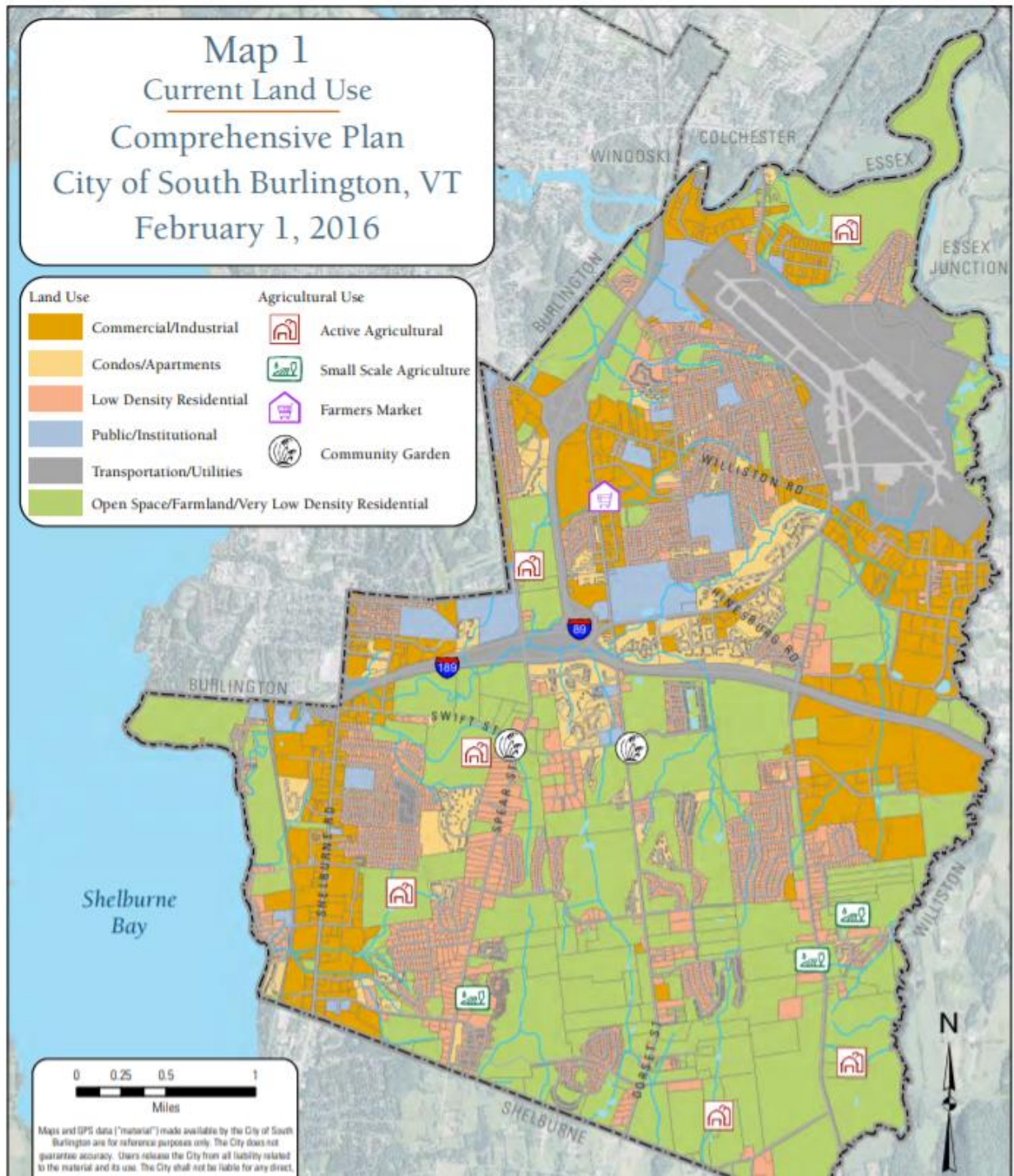


## CCHP Installations



Map 1  
Current Land Use  
 Comprehensive Plan  
 City of South Burlington, VT  
 February 1, 2016

Land Use		Agricultural Use	
	Commercial/Industrial		Active Agricultural
	Condos/Apartments		Small Scale Agriculture
	Low Density Residential		Farmers Market
	Public/Institutional		Community Garden
	Transportation/Utilities		
	Open Space/Farmland/Very Low Density Residential		



Maps and GPS data ("material") made available by the City of South Burlington are for reference purposes only. The City does not guarantee accuracy. Users release the City from all liability related to the material and its use. The City shall not be liable for any direct,



# Next Steps

- Consider the information and impact communities in the work on revising the actions