

TAYLOR COUNTY BOARD OF COUNTY COMMISSIONERS

PERRY, FLORIDA

TUESDAY, DECEMBER 12, 2023

6:00 P.M.

201 E. GREEN STREET

TAYLOR COUNTY ADMINISTRATIVE COMPLEX

OLD POST OFFICE

THE CHAIR CALLED THE JOINT WORKSHOP MEETING TO ORDER AT 6:00 P.M. THE MEMBERS OF THE BOARD ATTENDED THE MEETING AS FOLLOWS:

<u>DISTRICT</u>	<u>OFFICE</u>	<u>NAME</u>	<u>HOW ATTENDED</u>	<u>PORTION ATTENDED</u>
1	CHAIR	JAMIE ENGLISH	IN PERSON	ALL
2		JIM MOODY	IN PERSON	ALL
3	V-CHAIR	MICHAEL NEWMAN	IN PERSON	ALL
4		PAM FEAGLE	IN PERSON	ALL
5		THOMAS DEMPS	IN PERSON	ALL

A FULL BOARD BEING PRESENT.

COUNTY STAFF ATTENDED THE MEETING AS FOLLOWS:

<u>POSITION</u>	<u>NAME</u>	<u>HOW ATTENDED</u>	<u>PORTION ATTENDED</u>
CO ADMINISTRATOR	LAWANDA PEMBERTON	IN PERSON	ALL
ASST CO ADMIN	MARSHA DURDEN	IN PERSON	ALL
COUNTY ATTORNEY	CONRAD BISHOP	IN PERSON	ALL
COUNTY ENGINEER	KENNETH DUDLEY	IN PERSON	ALL

COUNTY CONSTITUTIONAL OFFICERS ATTENDED THE MEETING AS FOLLOWS:

<u>POSITION</u>	<u>NAME</u>	<u>HOW ATTENDED</u>	<u>PORTION ATTENDED</u>
CLERK OF COURT	GARY KNOWLES	IN PERSON	ALL
DEPUTY CLERK	SALINA GRUBBS	IN PERSON	ALL

SCHOOL BOARD MEMBERS ATTEBDED THE MEETING AS FOLLOWS:

ANGELA BALL, ATTORNEY
BONNIE SUE AGNER
BRENDA CARLTON
ALICIA BESHEARS
DEIDRIA DUNNELL
JEANNIE MATHIS

COMMISSIONER DEMPS LED THE BOARD IN PRAYER, FOLLOWED BY THE PLEDGE OF ALLEGIANCE TO THE FLAG. BUSINESS WAS TRANSACTED AS FOLLOWS:

THE CHAIRMAN READ INSTRUCTIONS FOR CONFERENCE CALL-IN LINE.

3. THE TAYLOR COUNTY BOARD OF COUNTY COMMISSIONERS AND THE TAYLOR COUNTY SCHOOL BOARD TO FURTHER DISCUSS REDISTRICTING IN TAYLOR COUNTY.

DISCUSSION:

CHAIR ENGLISH-THE ACLU PROPOSED A MAP FOR REDISTRICTING IN TAYLOR COUNTY AND THE COUNTY ENGINEER DEVELOPED A MAP WITH INPUT FROM THE COUNTY COMMISSIONERS.

DEIDRA DUNNELL- WHEN DID THE COUNTY MAKE A COUNTER PROPOSAL?

COMMISSIONER FEAGLE-ALL PARTIES AGREED ON THE PROPOSED MAP, BUT THE SCHOOL BOARD DOES NOT HAVE TO FOLLOW WITH THE SAME DISTRICT MAP AS THE COUNTY. THE GOAL IS FOR THE MAP TO BE FAIR. MY DISTRICT IS 21%. WE CAN MOVE ONE CENSUS BLOCK TO DISTRICT 1 TO MAKE BOTH 20%.

COUNTY ENGINEER- WE TRIED TO MAKE MINIMAL CHANGES AND STILL MEET THE GUIDELINE.

COUNTY ENGINEER GAVE OUTLINE OF CHANGES TO MAP.

SHIRLEY SCOTT- MY CONCERN WITH REDISTRICTING IS, WILL THERE BE A BLACK REPRESENTATIVE?

COUNTY ENGINEER- WE DID LOOK AT RACE PERCENTAGES.

SHIRLEY SCOTT- DURING THE LAWSUIT, WE ARE GUARANTEED A BLACK REPRESENTATIVE.

MICHAEL ALBRITTON-THE ORIGINAL MAP BY ACLU HAD A 90% BLACK POPULATION IN ONE DISTRICT.

DEIDRA DUNNELL- I WAS UNDER THE IMPRESSION WE WOULD BE LOOKING AT THE ACLU MAP.

NICK WARREN, ACLU ATTORNEY- THE MAP WILL COMPLY WITH THE VOTING RIGHTS ACT WHICH APPLIES TO TAYLOR COUNTY. YOU CAN DRAW A DISTRICT THAT IS MAJORITY BLACK. THE REMEDY MUST PROTECT THE ABILITY TO ELECT A MINORITY OF CHOICE. WE ANALYZED VOTER DATA AND THE ESTIMATE RANGE FOR ACTUAL VOTER TURNOUT. WHEN WE GOT THE MAP YESTERDAY, WE RAN IT AND IT WAS 59 % BLACK AND 30% WHITE. THE ACLU CONCEPT MAP, DISTRICT 5 WAS 50% WHITE AND 48% BLACK. THE CURRENT MAP IS 50% WHITE AND 30% BLACK.

SHIRLEY SCOTT- IT IS OUR INTENT TO ASSURE THERE WILL BE A BLACK REPRESENTATIVE.

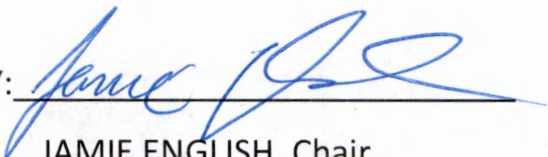
COMMISSIONER FEAGLE- I WOULD LIKE TO SEE WHAT THE PERCENTAGE VOTED VERSES THE PERCENTAGE THAT DID NOT VOTE.

BONNIE SUE AGNER- I WOULD LIKE TO SEE WHAT THE VOTING PERCENTAGE IS FOR EACH DISTRICT.

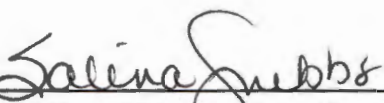
ATTACHMENT: TAYLOR COUNTY 2020 CENUS MAP

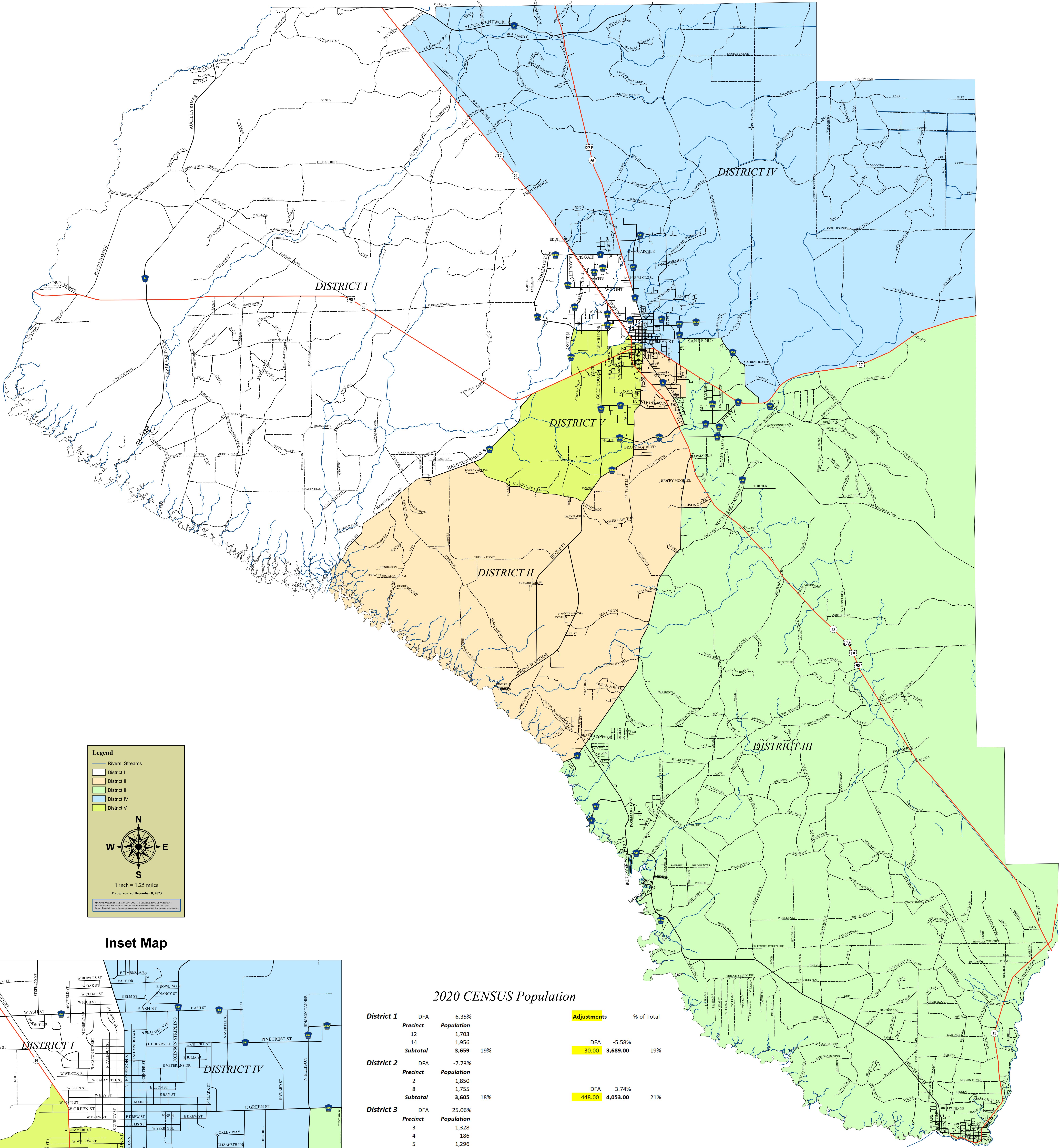
THE HOUR BEING APPROXIMATELY 8:29 P.M., AND THERE BEING NO FURTHER BUSINESS, THE JOINT WORKSHOP MEETING WAS ADJOURNED UNTIL TUESDAY DECEMBER 19, 2023, SUBJECT TO CALL.

BOARD OF COUNTY COMMISSIONERS
TAYLOR COUNTY, FLORIDA

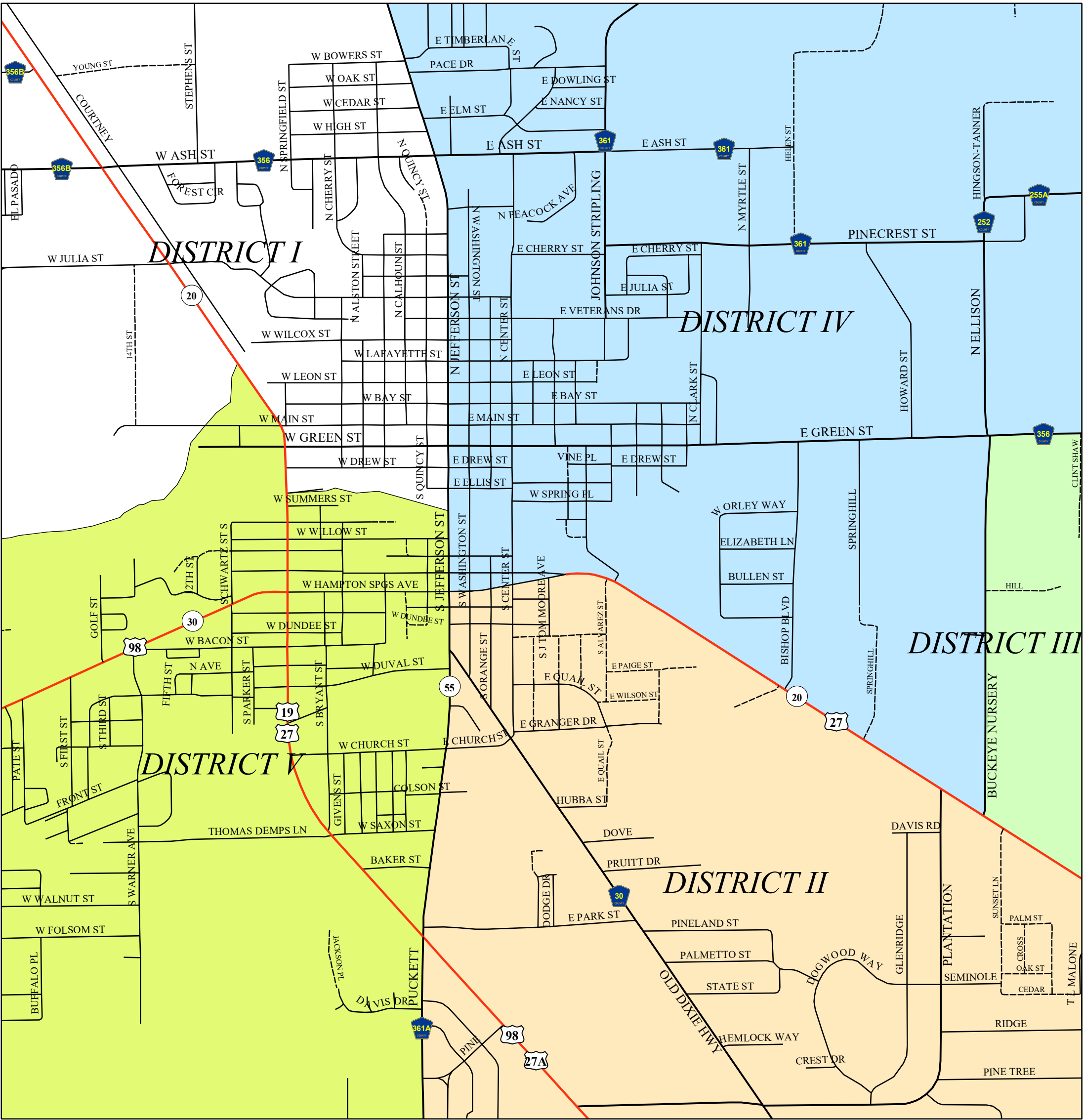
BY: 
JAMIE ENGLISH, Chair

ATTEST:

BY: 
SALINA GRUBBS, D.C. for
GARY KNOWLES, Clerk



Inset Map



2020 CENSUS Population

District 1		DFA	-6.35%	Adjustments	% of Total
Precinct	Population				
12	1,703				
14	1,956				
Subtotal	3,659	19%			
District 2		DFA	-7.73%		
Precinct	Population				
2	1,850				
8	1,755				
Subtotal	3,605	18%			
District 3		DFA	25.06%		
Precinct	Population				
3	1,328				
4	186				
5	1,296				
10	1,056				
11	1,020				
Subtotal	4,886	25%			
District 4		DFA	10.37%		
Precinct	Population				
1	1,385				
6	848				
7	2,079				
Subtotal	4,312	22%			
District 5		DFA	-21.35%		
Precinct	Population				
9	945				
13	2,128				
Subtotal	3,073	16%			
County Total		19,535	w/o Prison Pop	19,535	w/o Prison Pop
		3,907	Ideal	3,907	Ideal
DFA	46.40%			DFA	9.60%
Max Dev	25.06%			Max Dev	4.02%
Min Dev	-21.35%			Min Dev	-5.58%