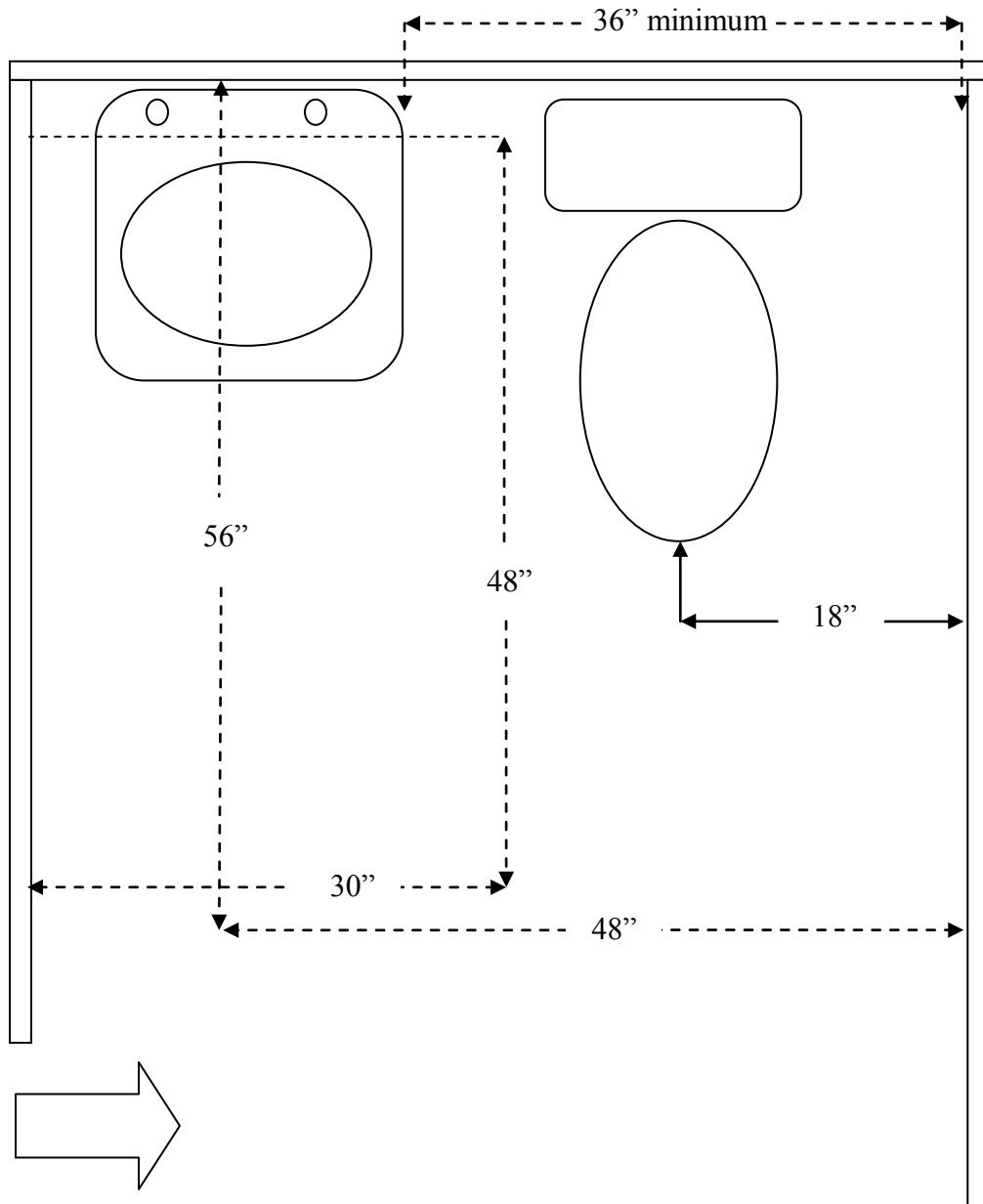


**MINIMUM CLEAR FLOOR SPACE FOR TOILET ROOM FIXTURES
FOR SIDE APPROACH TO WATER CLOSET**



NOTES

1. Doors cannot swing into the clear floor space areas for fixtures.
2. Clear floor spaces may overlap as depicted.
3. 36" grab bar required at rear of water closet.
4. 42" grab bar required at water closet side (starting at 12" from rear wall).

**MINIMUM CLEAR FLOOR SPACE FOR TOILET ROOM FIXTURES
FOR FRONT APPROACH TO WATER CLOSET**

