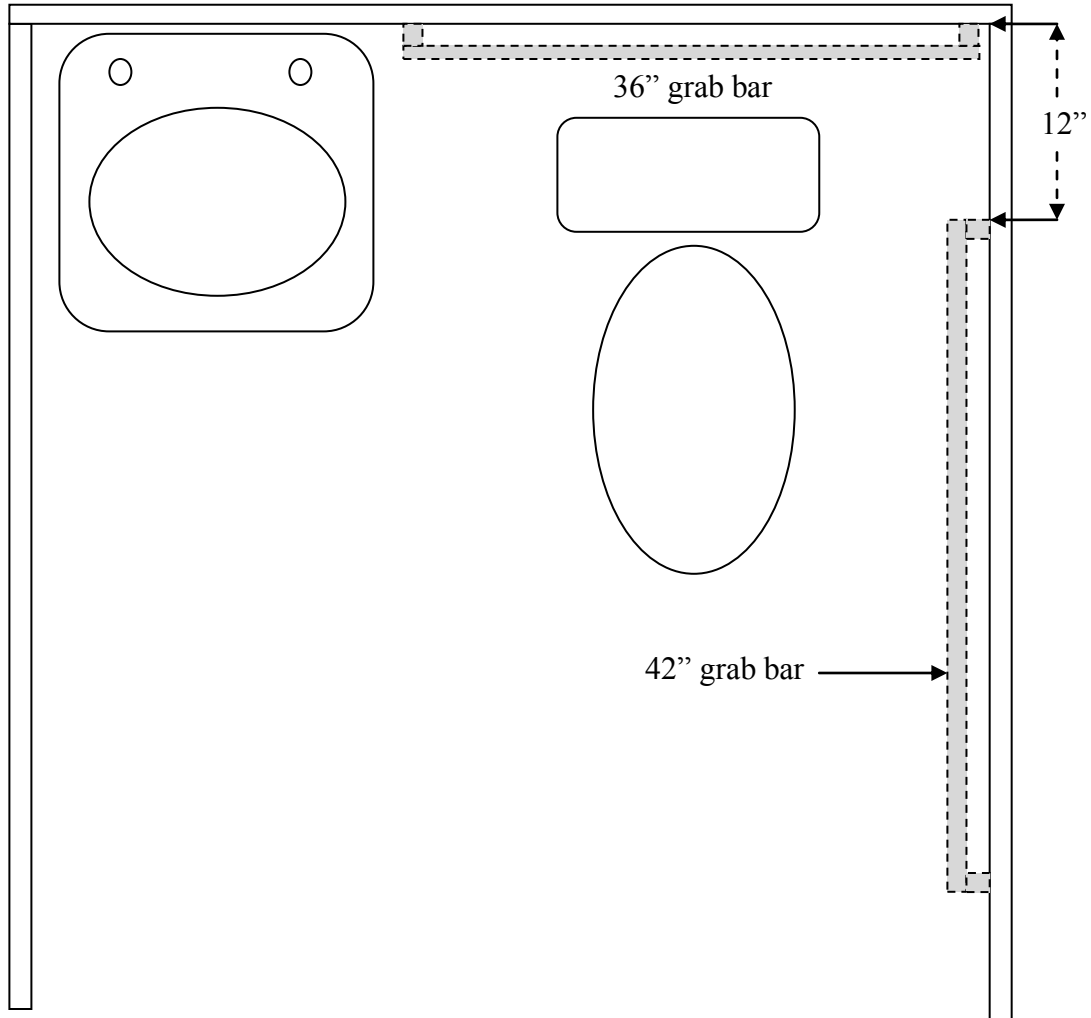


GRAB BAR REQUIREMENTS FOR TOILET ROOM



NOTES

1. Mount grab bars 36'' above floor to center of grab bar.
2. 1-1/2'' space required between grab bar and wall surface.
3. Grab bar diameter must be between 1-1/4'' to 1-1/2''.
4. Mount 42'' grab bar at water closet side starting 12'' from rear wall.