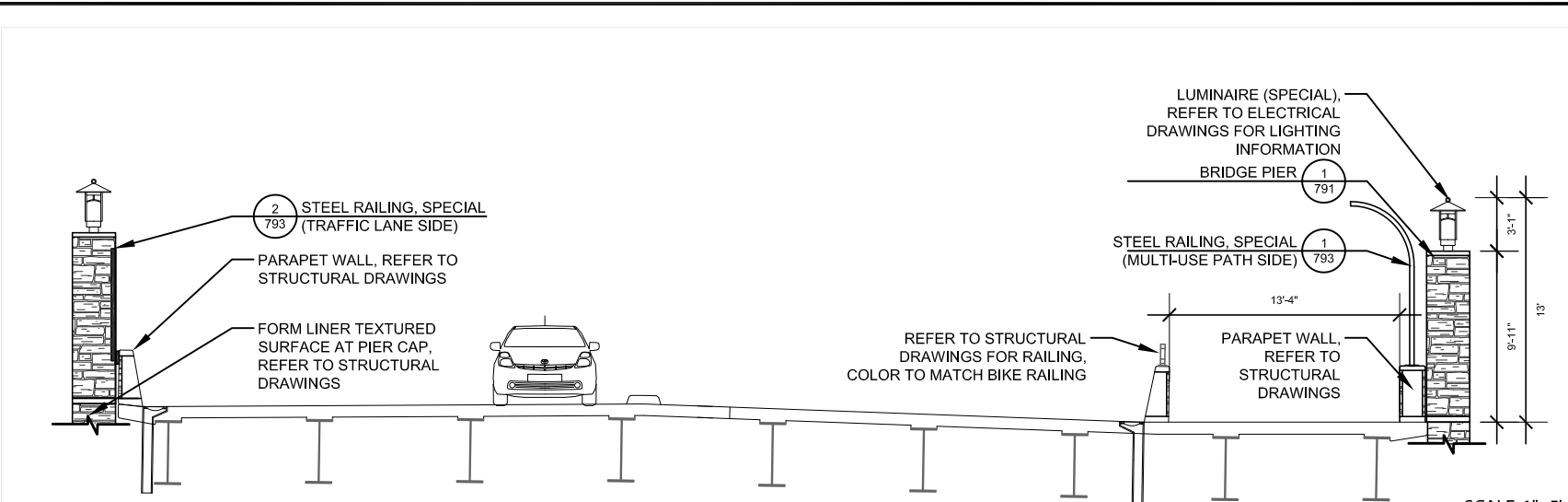
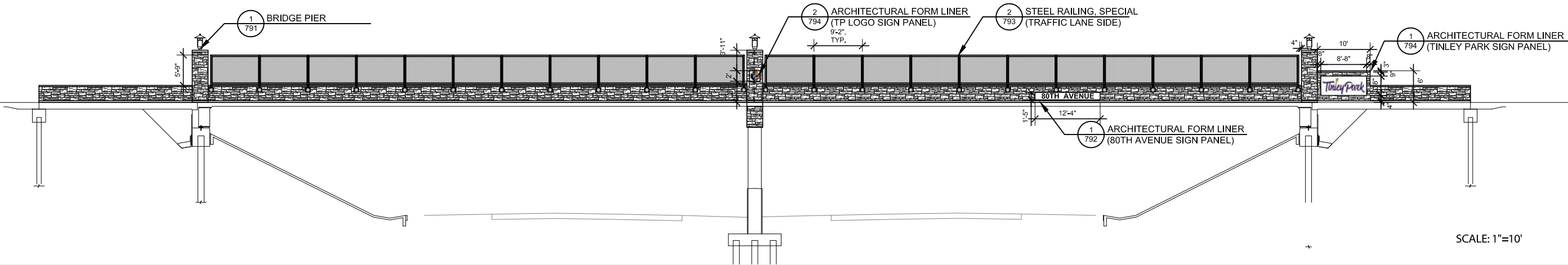


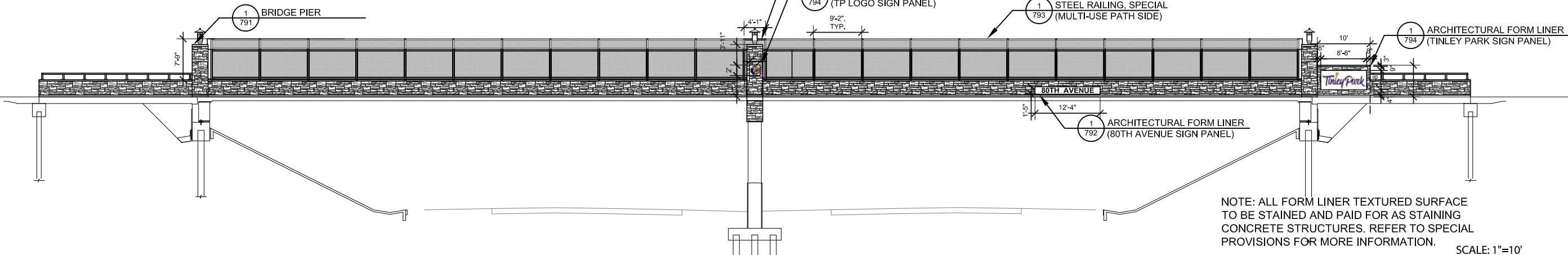
PLAN



SECTION - A



ELEVATION - B
(WEST SIDE)



ELEVATION - C
(EAST SIDE)

J:\PROJECTS\ALPHA\CORBA GROUP\WCDOT 80TH AVENUE\02 DD-CD\01 - PLAN.DWG 4-Bridge -elev
 Plotted: 26.02.2021 By: XSUN



USER NAME =	DESIGNED - XS	REVISED -
PLOT SCALE =	DRAWN - XS	REVISED -
PLOT DATE =	CHECKED - TCK	REVISED -
	DATE - 03/01/2021	REVISED -

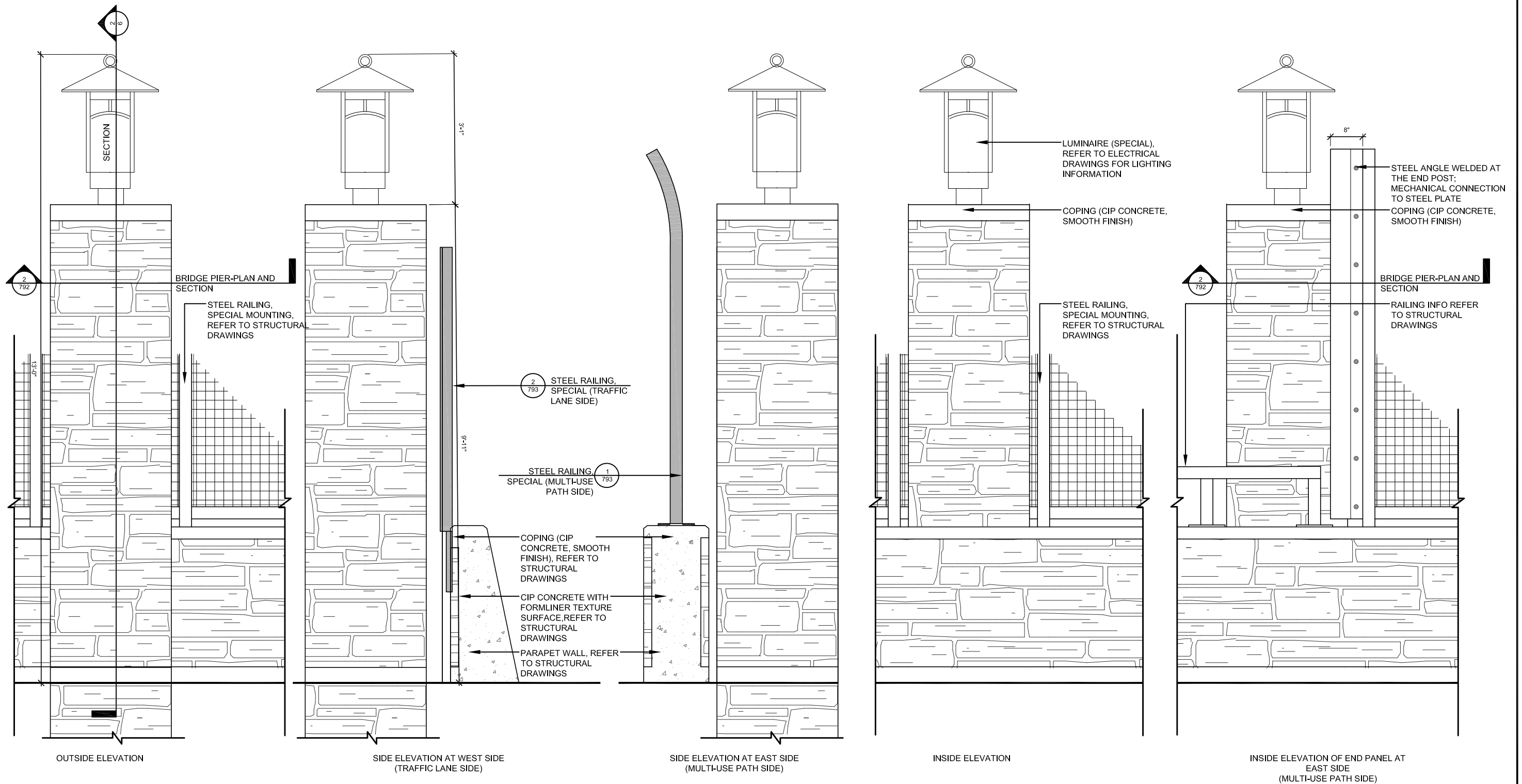
STATE OF ILLINOIS
 DEPARTMENT OF TRANSPORTATION

BRIDGE ENHANCEMENT PLAN

SCALE:	SHEET	OF	SHEETS	STA.	TO STA.
--------	-------	----	--------	------	---------

F.A.P. RTE.	SECTION	COUNTY	TOTAL SHEETS	SHEET NO.
2552	06-00122-16-FP	WILL	1113	790
CONTRACT NO. -				
ILLINOIS FED. AID PROJECT				

J:\PROJECTS\ALPHA\COREA GROUP\WCDOT 80TH AVENUE\09 GRAPHICS\02 DD-CD\02 DETAILS.DWG 05 Details
Plotted: 26.02.2021 By: XSUN



1

BRIDGE PIER

Scale: 1" = 1'-0"

NOTE: ALL ARCHITECTURAL FORM LINER TEXTURED SURFACE TO BE STAINED AND PAID FOR AS STAINING CONCRETE STRUCTURES. REFER TO SPECIAL PROVISIONS FOR MORE INFORMATION.



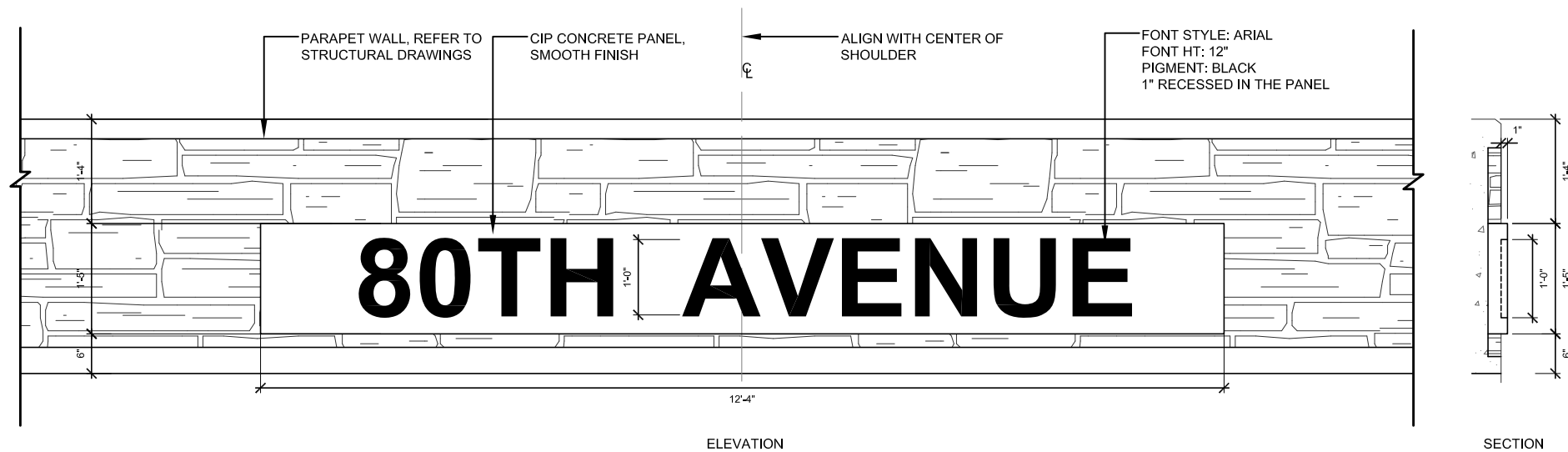
USER NAME=	DESIGNED — XS	REVISED —
PLOT SCALE=	DRAWN — XS	REVISED —
PLOT DATE =	CHECKED — TCK	REVISED —
	DATE — 03/01/2021	REVISED —

STATE OF ILLINOIS
DEPARTMENT OF TRANSPORTATION

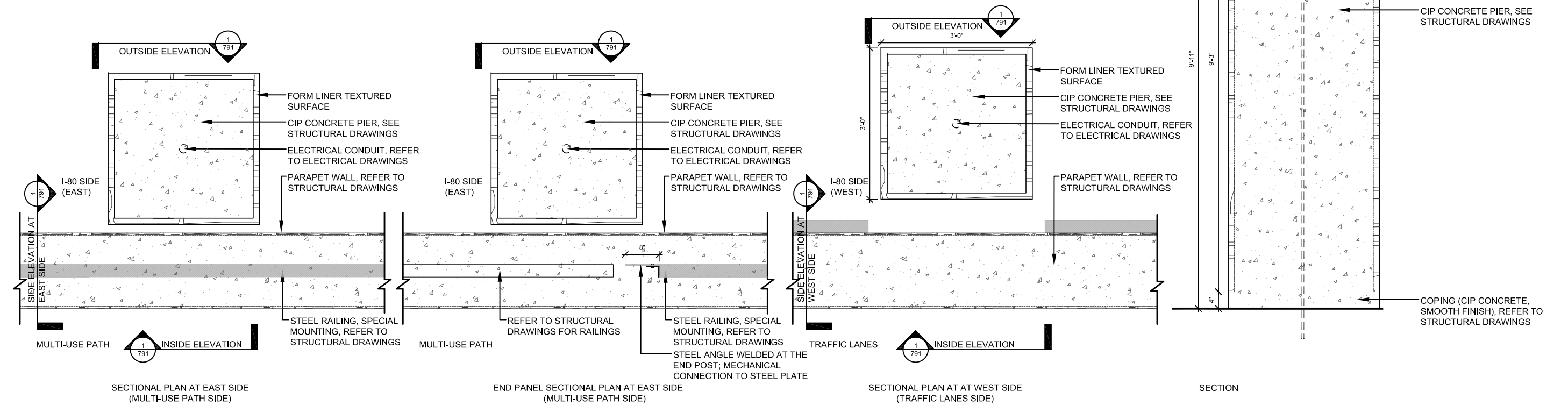
BRIDGE ENHANCEMENT DETAILS

SCALE: SHEET OF SHEETS STA. TO STA.

F.A.P. RTE.	SECTION	COUNTY	TOTAL SHEETS	SHEET NO.
2552	06-00122-16-FP	WILL	1113	791
CONTRACT NO. -				
ILLINOIS FED. AID PROJECT				



1 ARCHITECTURAL FORM LINER (80TH AVENUE SIGN PANEL)
Scale: 1" = 1'-0"



2 BRIDGE PIER - PLAN AND SECTION
Scale: 1" = 1'-0"

J:\PROJECTS\ALPHA\CORBA GROUP\WCDOT 80TH AVENUE\09 GRAPHICS\02 DD-CD\02 DETAILS.DWG 06 Details
Plotted: 26.02.2021 By: XSUN



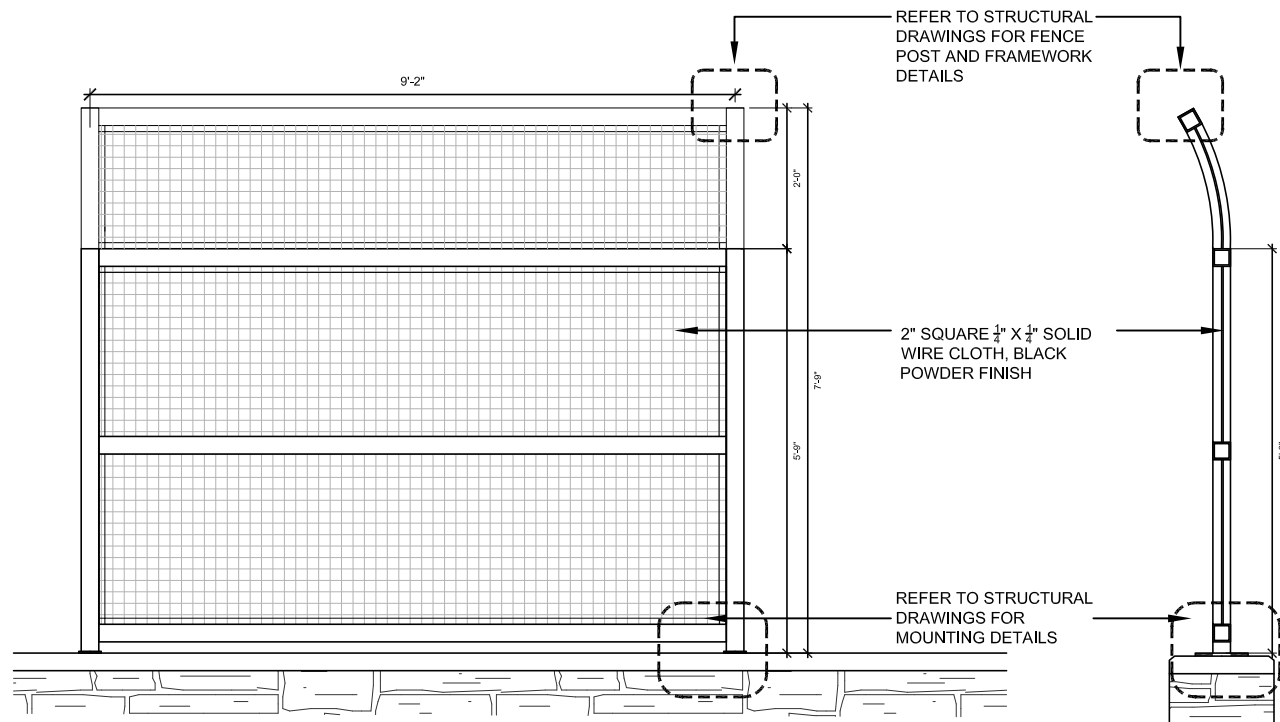
USER NAME =	DESIGNED — XS	REVISED —
PLOT SCALE =	DRAWN — XS	REVISED —
PLOT DATE =	CHECKED — TCK	REVISED —
	DATE — 03/01/2021	REVISED —

STATE OF ILLINOIS
DEPARTMENT OF TRANSPORTATION

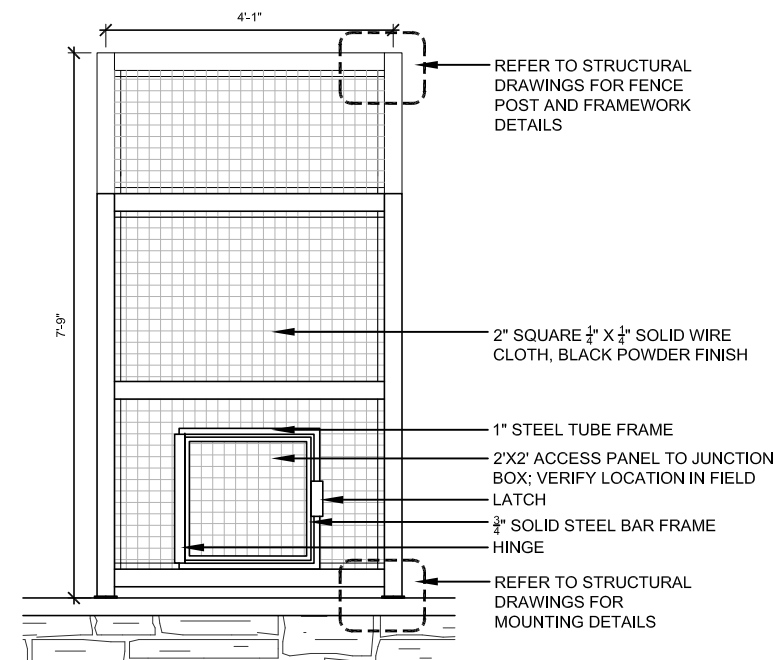
BRIDGE ENHANCEMENT DETAILS

SCALE: SHEET OF SHEETS STA. TO STA.

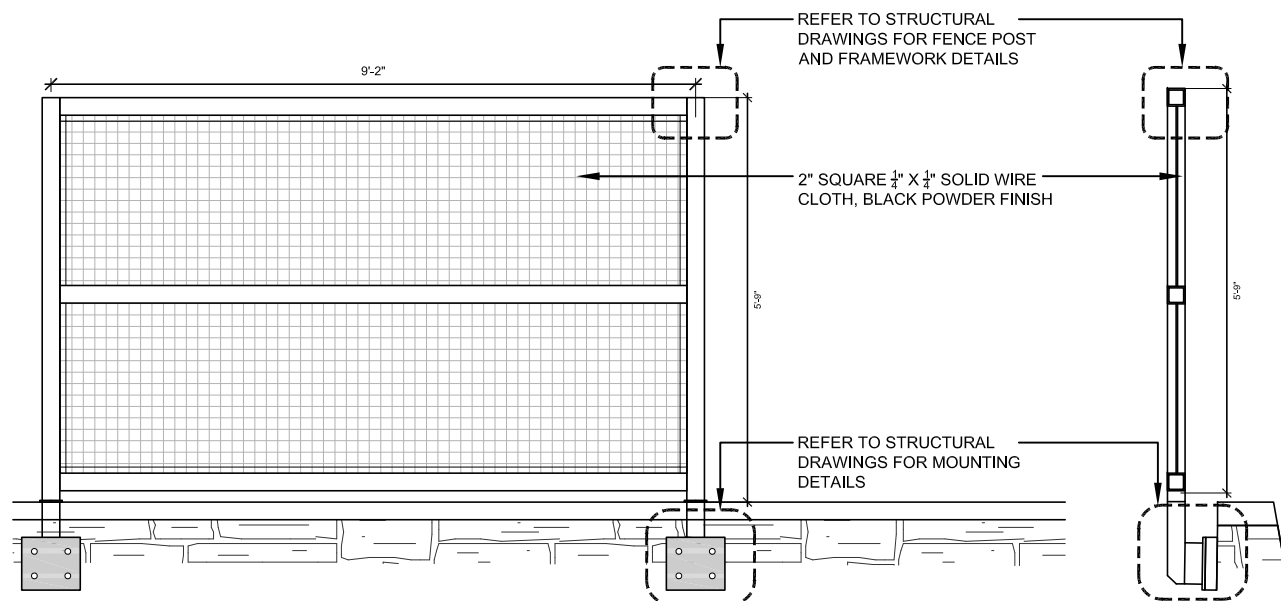
F.A.P. RTE.	SECTION	COUNTY	TOTAL SHEETS	SHEET NO.
2552	06-00122-16-FP	WILL	1113	792
CONTRACT NO. -				
ILLINOIS FED. AID PROJECT				



1 STEEL RAILING, SPECIAL (MULTI-USE PATH SIDE)
SCALE: 3/4" = 1'-0"



3 STEEL RAILING, SPECIAL (MULTI-USE PATH SIDE - CENTER SECTION WITH ACCESS PANEL)
SCALE: 3/4" = 1'-0"



2 STEEL RAILING, SPECIAL (TRAFFIC LANE SIDE)
SCALE: 3/4" = 1'-0"

J:\PROJECTS\ALPHA\CORBA GROUP\WCDOT 80TH AVENUE\09 GRAPHICS\02 DD-CD\04-05 RAILING DETAILS.DWG 08 Details
Plotted: 26.02.2021 By: XSUN



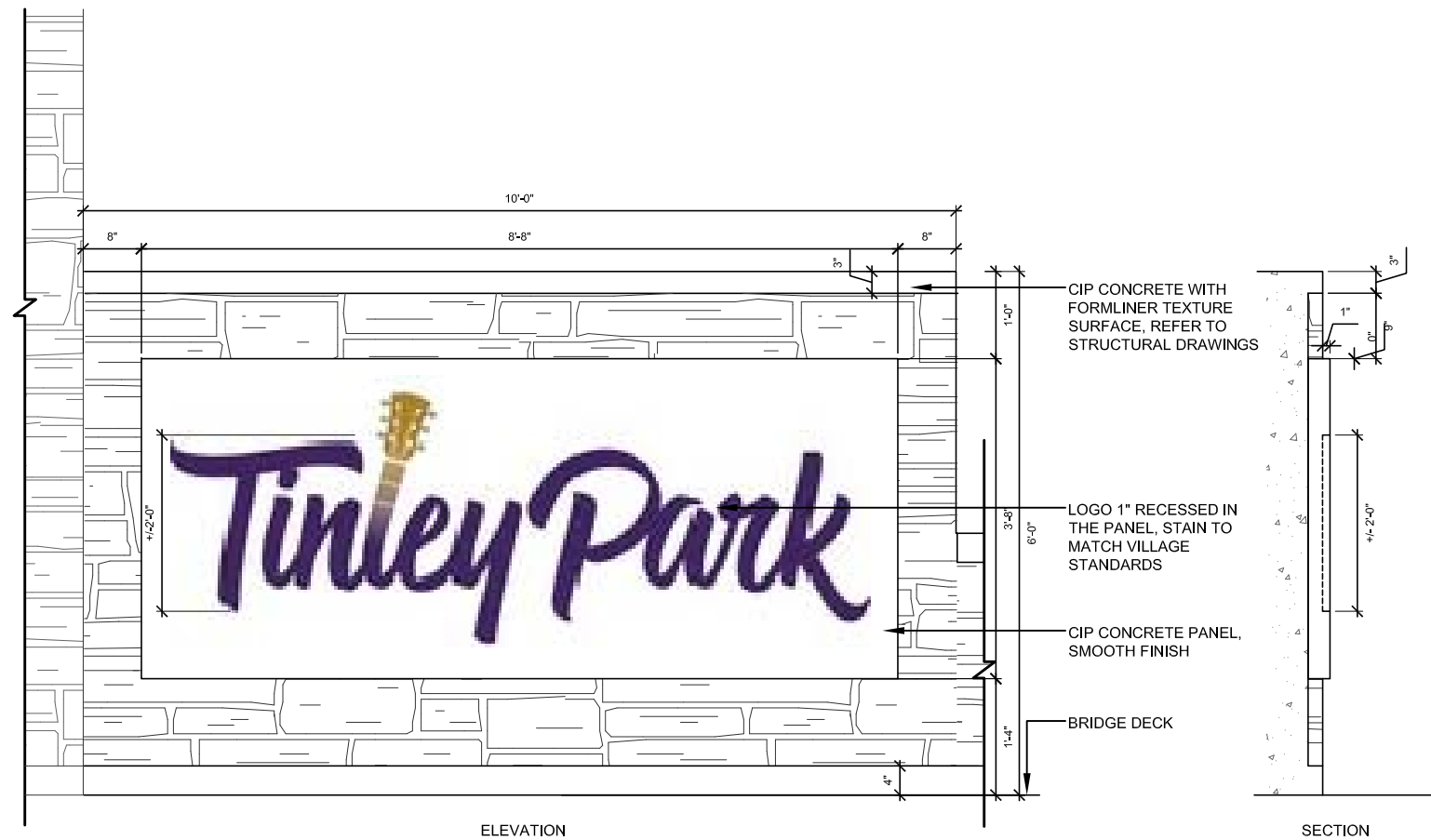
USER NAME =	DESIGNED — XS	REVISED —
PLOT SCALE =	DRAWN — XS	REVISED —
PLOT DATE =	CHECKED — TCK	REVISED —
	DATE — 03/01/2021	REVISED —

**STATE OF ILLINOIS
DEPARTMENT OF TRANSPORTATION**

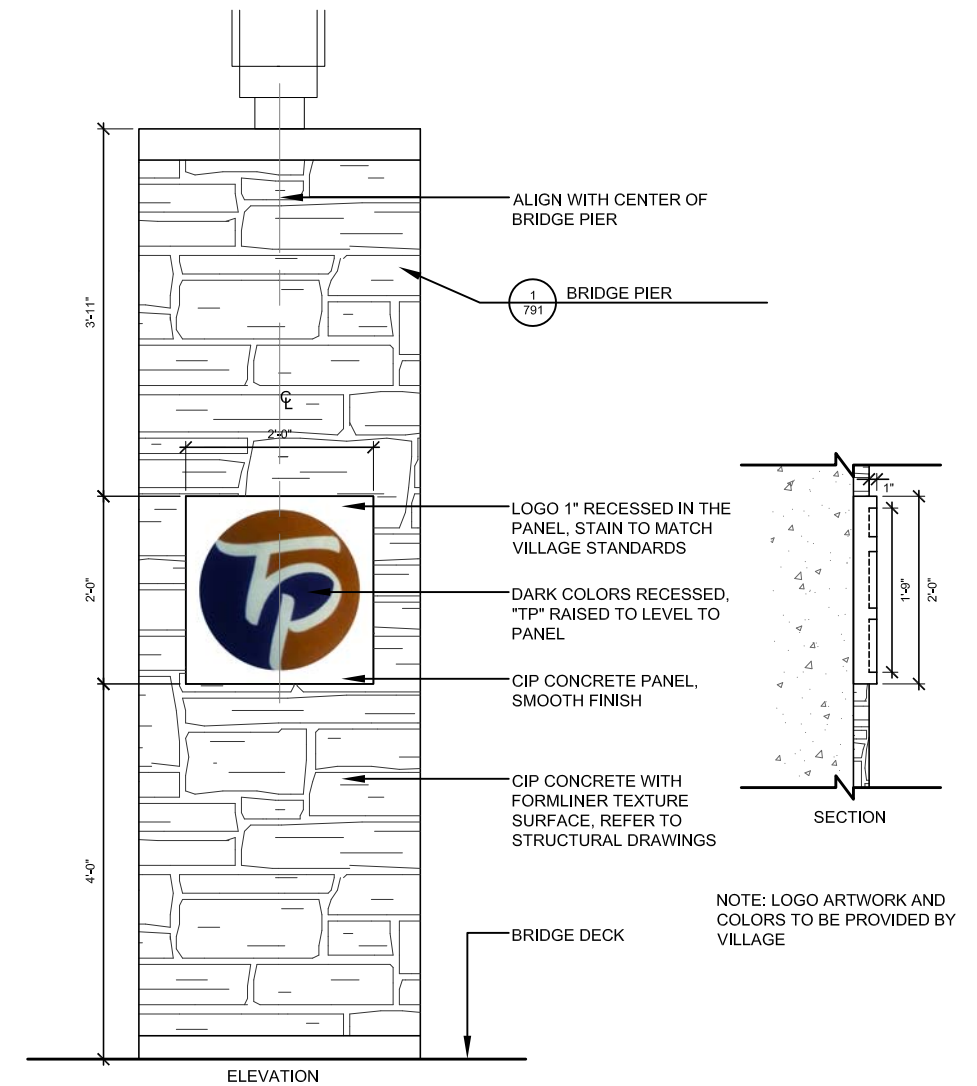
BRIDGE ENHANCEMENT RAILING DETAILS

SCALE: SHEET OF SHEETS STA. TO STA.

F.A.P. RTE.	SECTION	COUNTY	TOTAL SHEETS	SHEET NO.
2552	06-00122-16-FP	WILL	1113	793
CONTRACT NO. -				
ILLINOIS FED. AID PROJECT				



1 ARCHITECTURAL FORM LINER (TINLEY PARK SIGN PANEL)
Scale: 1" = 1'-0"



2 ARCHITECTURAL FORM LINER (TP LOGO SIGN PANEL)
Scale: 1" = 1'-0"

J:\PROJECTS\ALPHA\CDRBA GROUP\WCDOT 80TH AVENUE\09 GRAPHICS\02 DD-CD\02 DETAILS.DWG 07 Details
Plotted: 26.02.2021 By: XSUN



USER NAME =	DESIGNED — XS	REVISED —
PLOT SCALE =	DRAWN — XS	REVISED —
PLOT DATE =	CHECKED — TCK	REVISED —
	DATE — 03/01/2021	REVISED —

STATE OF ILLINOIS
DEPARTMENT OF TRANSPORTATION

ARCHITECTURAL FORM LINER DETAILS

SCALE: SHEET OF SHEETS STA. TO STA.

F.A.P. RTE.	SECTION	COUNTY	TOTAL SHEETS	SHEET NO.
2552	06-00122-16-FP	WILL	1113	794
CONTRACT NO. -				
ILLINOIS FED. AID PROJECT				