

ASBESTOS INSPECTION REPORT

Rath Packing Co,
ADMINISTRATION BLDG. - #48
300 Sycamore St.
Waterloo, IA 50703

SUBMITTED TO:

Department of Correctional Services
314 East 6th St., P.O. Box 4030
Waterloo, Iowa 50704

Tom Bonefas
(319) 291-2015 ~ (319) 291-3947 FAX

ASBESTOS INSPECTION

February 19, 1999



prepared by:

Jay J. Llewellyn, Inspector
IA License #98-23431

Expiration Date: 10/16/99

ADVANCED TECHNOLOGIES CORPORATION

3123 Big Woods Road ~ P.O. Box 902
Cedar Falls, Iowa 50613

(319) 266-7524 ~ (319) 266-0352 FAX

00100-01

TABLE OF CONTENTS

<u>SECTION</u>	<u>PAGE</u>
REPORT DATA & SUMMARY	00110-01
INTRODUCTION	00120-01
DEFINITIONS	00130-01
LIMITATIONS & CONDITIONS	00140-01
ASBESTOS CONTAINING MATERIALS	00150-01
BUILDING LAYOUT	00160-01
BULK SAMPLE INVENTORY	00170-01
LABORATORY ANALYSIS REPORTS	00180-01

REPORT DATA

BUILDING NAME: **Administration Bldg. - #48**
 Rath Packing Co.
 300 Sycamore St.
 Waterloo, IA 50703

INSPECTION AREAS: Interior & Exterior of Structure(s)

CLIENT:	Department of Correctional Services	Tom Bonefas
	314 East 6th Street	(319) 291-2015
	P.O. Box 4030	(319) 291-3947 FAX
	Waterloo, IA 50704-4030	

OVERVIEW:

An asbestos inspection was conducted by Jay J. Llewellyn, Inspector (IA License # 98-23431) on February 8, 1999 and February 15, 1999. The inspection was performed at the **Administration Bldg. - #48** located at 300 Sycamore St. in Waterloo, IA. The property consists of a 3-4 concrete/masonry industrial structure. The purpose of this inspection was to identify and quantify asbestos containing materials. The inspection entailed a visual assessment of the property for suspect asbestos containing materials, collection and submittal of bulk samples for analysis.

This report is a summary of the materials assumed to contain asbestos & samples confirmed to contain > 1% asbestos, their quantities.

SUMMARY OF MATERIALS FOUND TO CONTAIN ASBESTOS (Includes materials ASSUMED to contain asbestos).

<u>TYPE OF MATERIAL</u>	<u>QTY</u>
Thermal Pipe Insulation & Fittings	
<4"	1,415 ln.ft.
4-5"	5,754 ln.ft.
6-7"	1,940 ln.ft.
8-9"	380 ln.ft.
≥10"	171 ln.ft.
Thermal Tank Insulation	167 sq.ft.
9"x9" Floor Tile & Mastic	22,179 sq.ft.
12"x12" Floor Tile & Mastic	4,886 sq.ft.
1/8" Asbestos Cement Board (Transite)	6,879 sq.ft.
Perforated Transite Ceiling Panels	1,773 sq.ft.
Sprayed-on Acoustical Ceiling Texture	238 sq.ft.
Mastic/Coating on Cork Duct	4,676 sq.ft.
1/4" Mag Insulation on/inside Cork Duct	280 sq.ft.
Cork Pipe Wrap (A/C line)	2 ln.ft.
12"x12" Ceiling Tile Adhesive	368 sq.ft.
Light Fixture Backing Paper	1 sq.ft.
"Slate-type" Asbestos Cement Board Siding	150 sq.ft.
Asbestos Duct Cloth/Paper	35 sq.ft.
Fire Doors	6 ea.
Joint Compound (on drywall)	3,808 sq.ft.
Black Tar (Roofing Cement)	544 sq.ft.
Roof Flashing	1,743 sq.ft.
Roofing Felts	5,937 sq.ft.
Exterior White Door & Window Caulk	5,961 ln.ft.

NOTE: Listed quantities are only estimates.

see "ASBESTOS CONTAINING MATERIALS" for material locations & quantities.



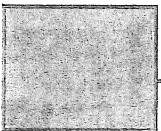
Joint Compound with sheet rock



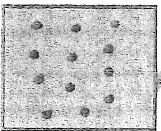
Transite wallboard



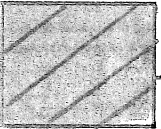
Tank insulation



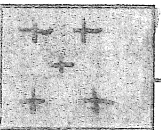
Floor tile and mastic



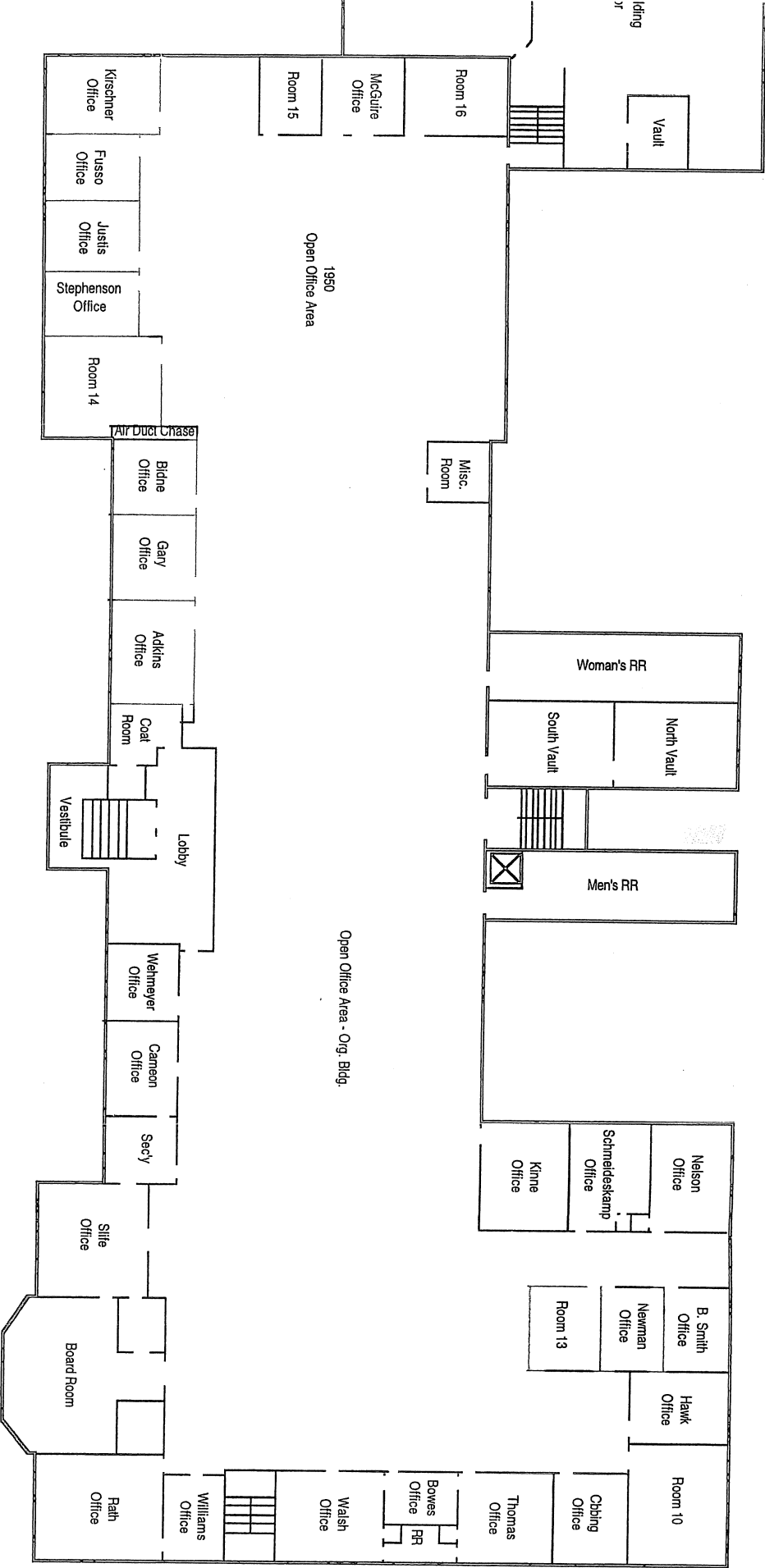
Ceiling tile glue spots



Transite ceiling panels

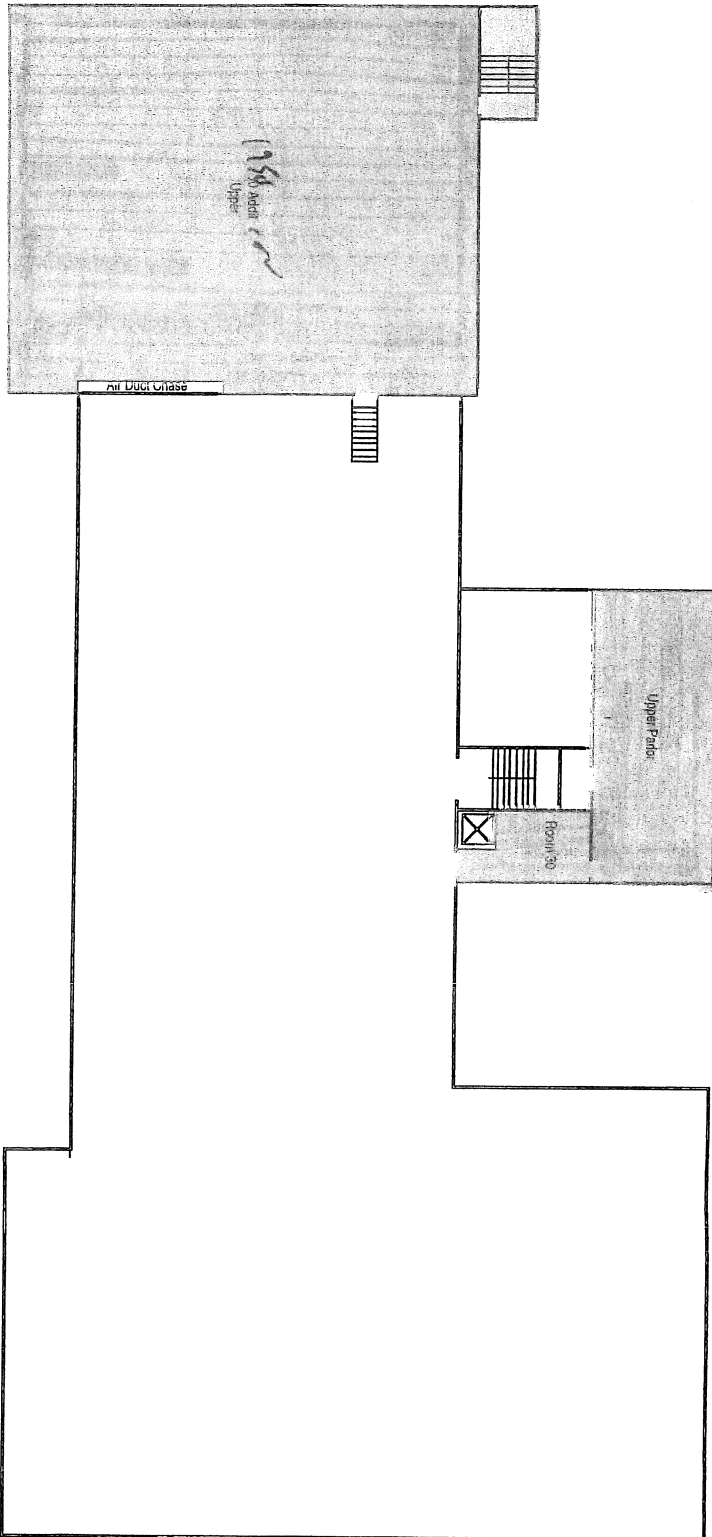


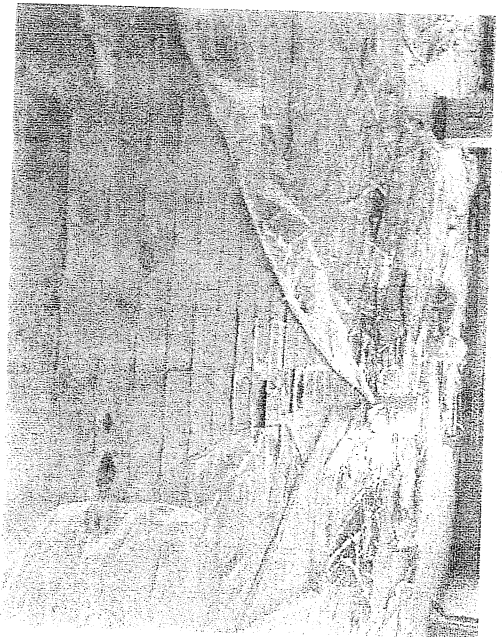
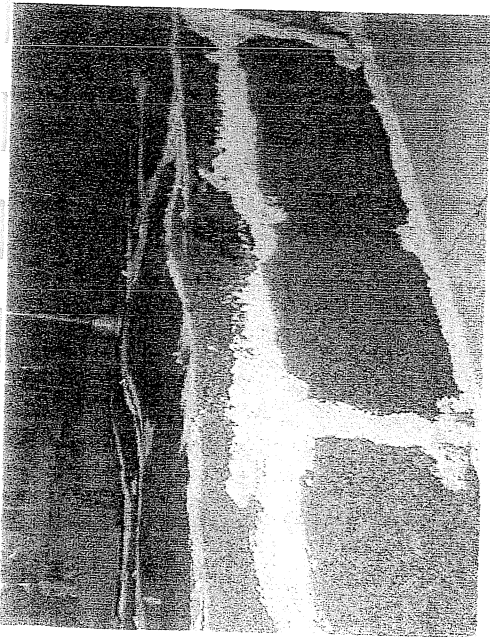
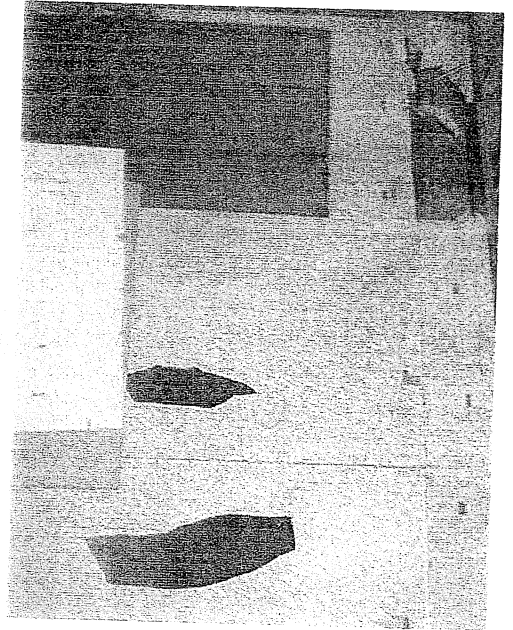
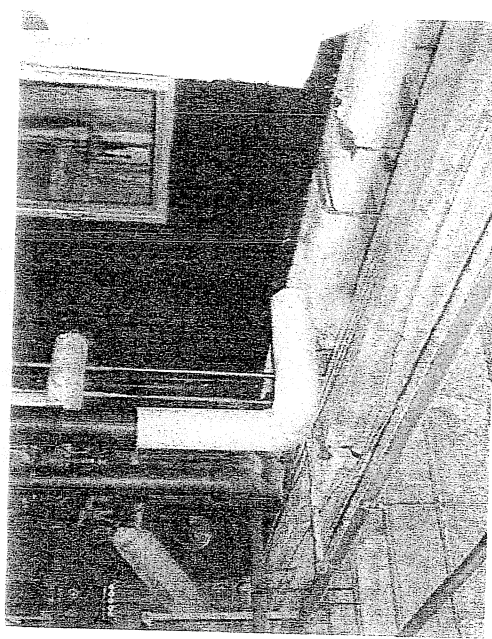
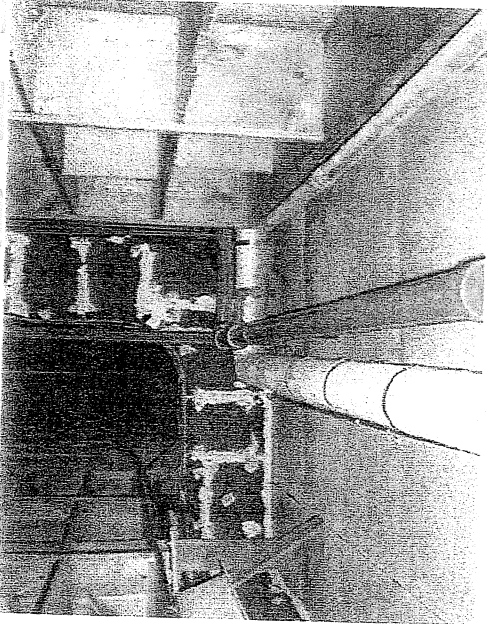
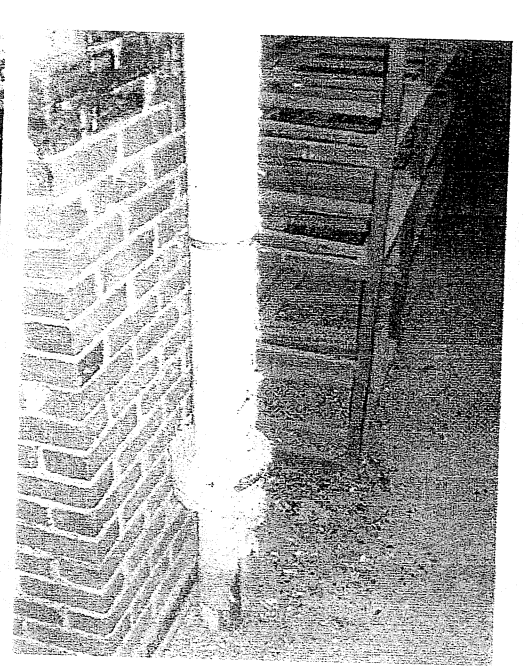
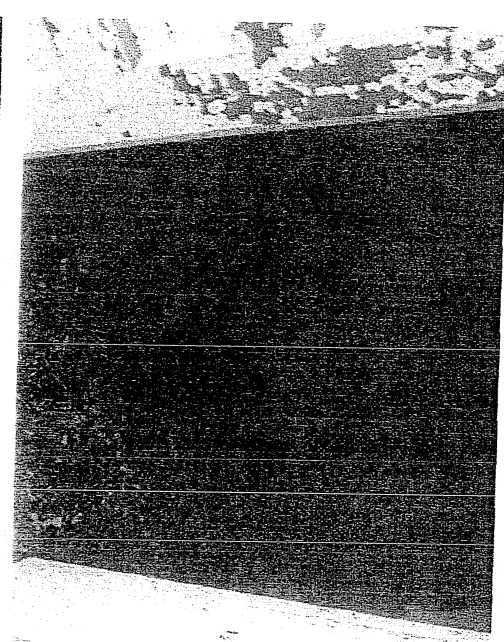
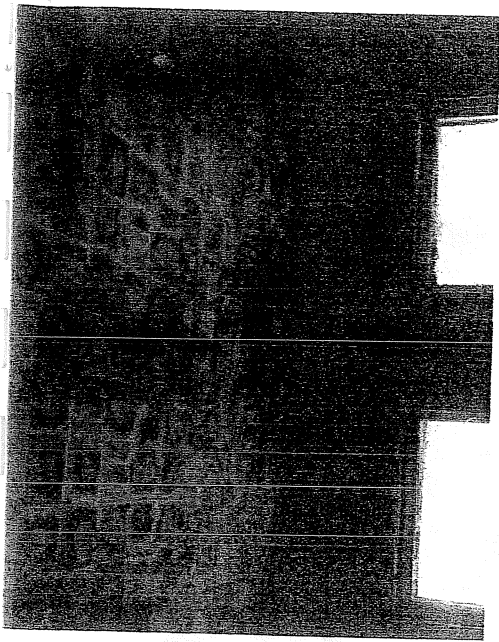
Ceiling texture

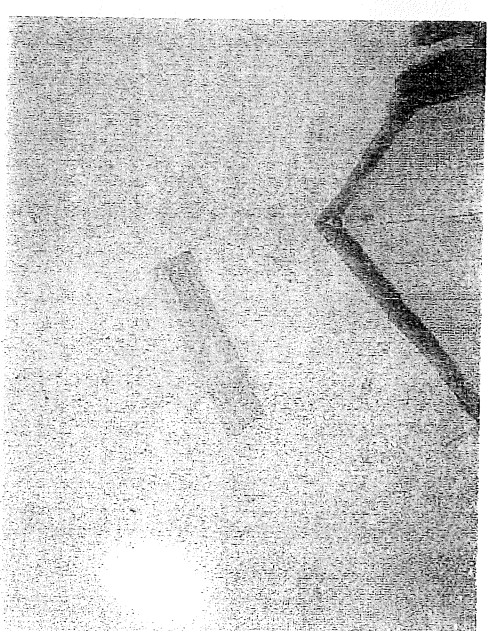
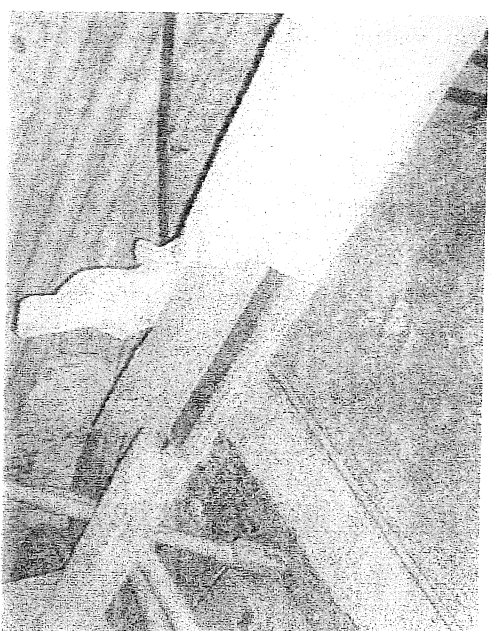
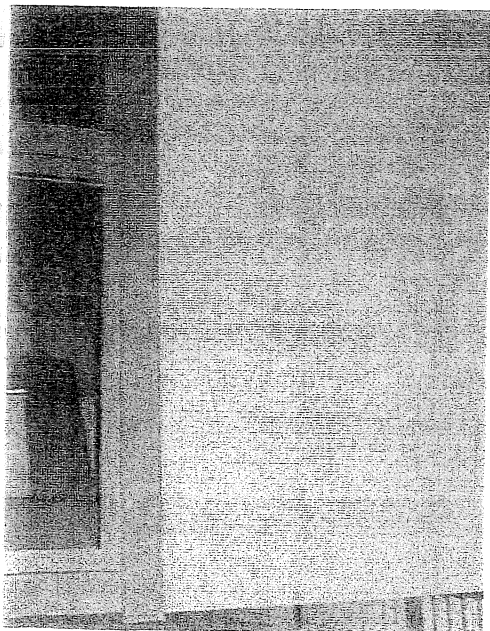
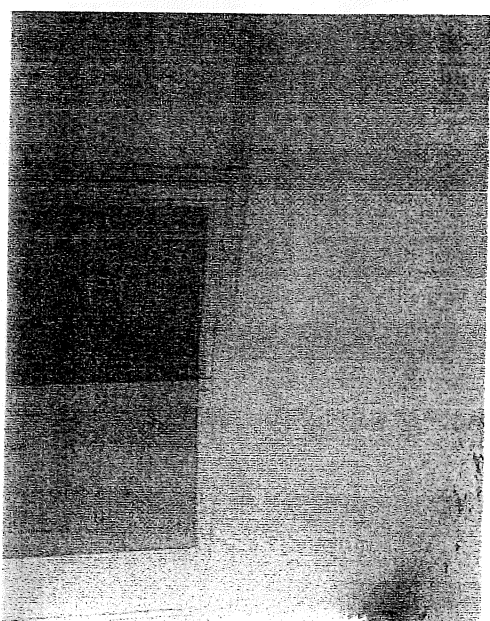
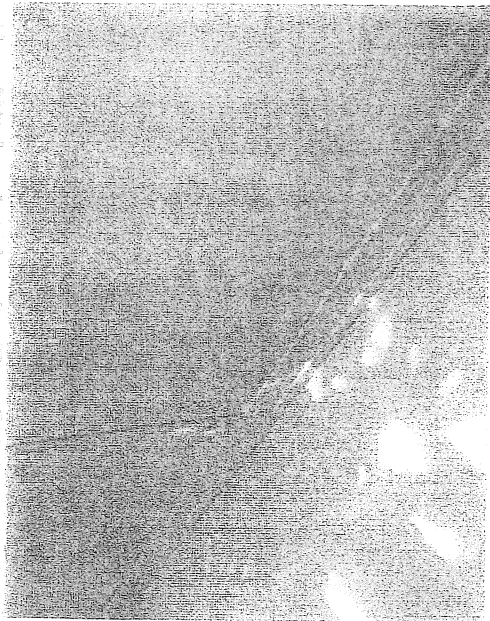
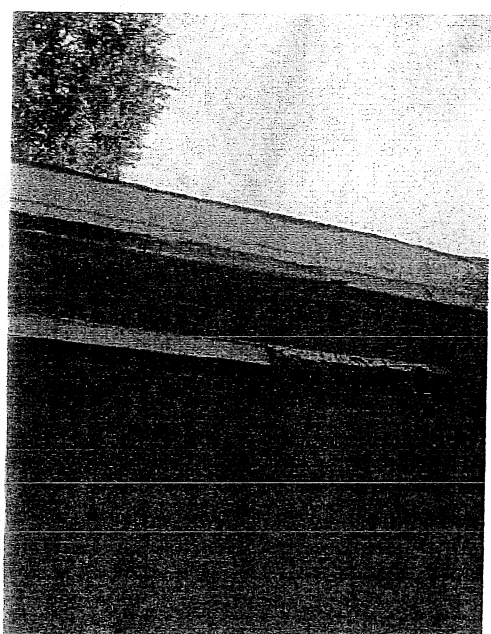
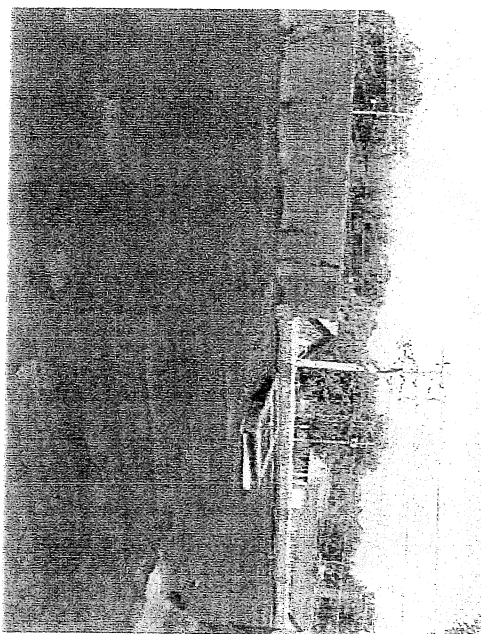
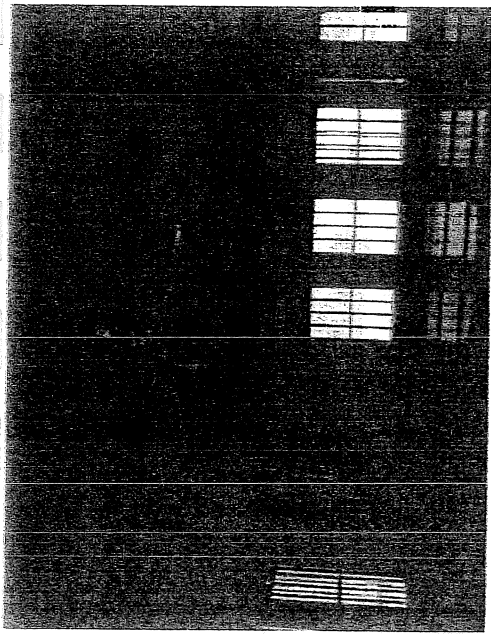


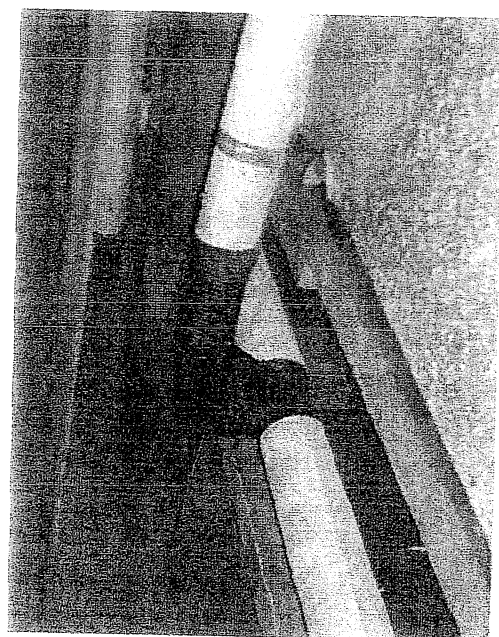
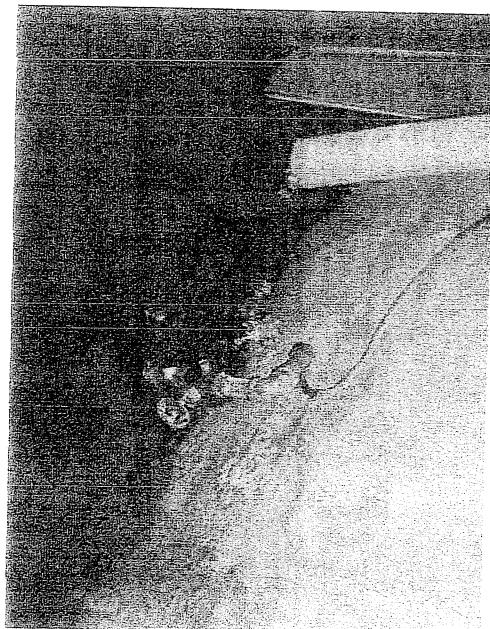
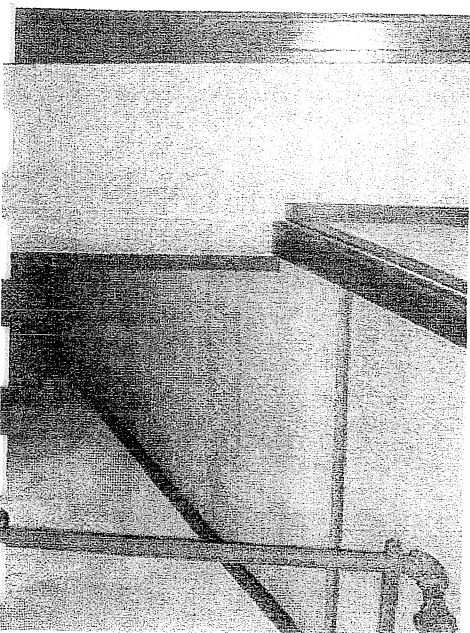
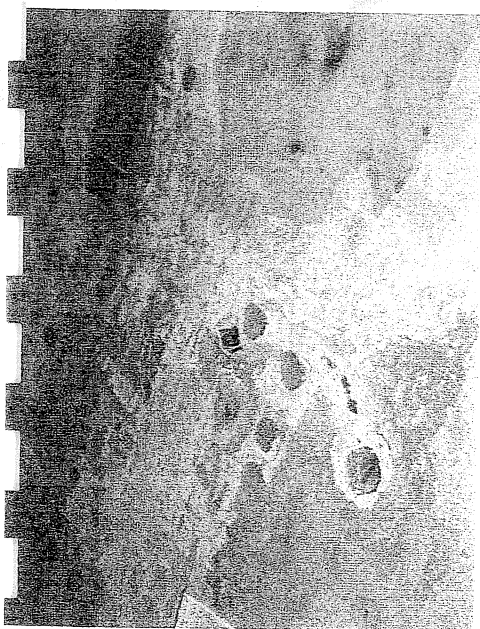
RATH ADMINISTRATION BLDG.
Waterloo, Iowa

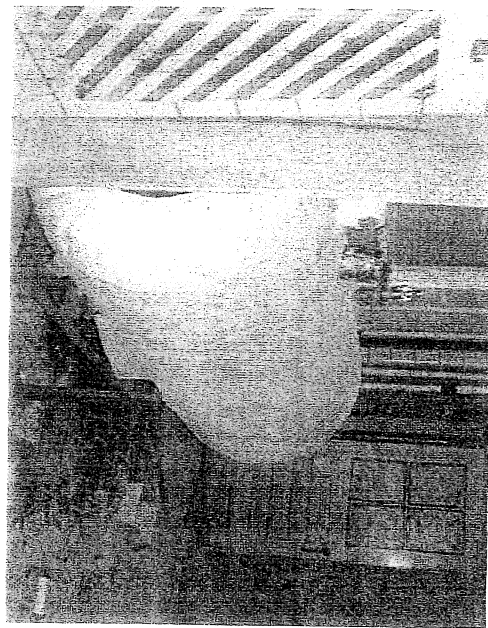
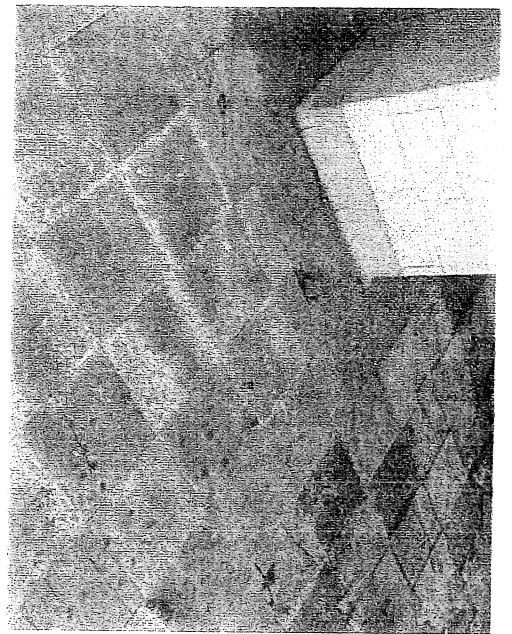
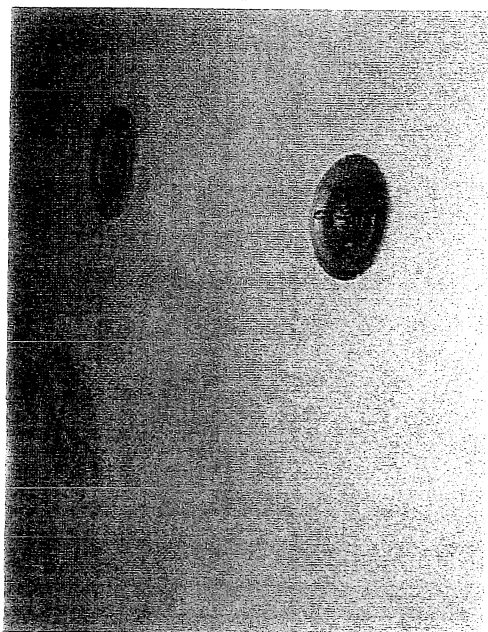
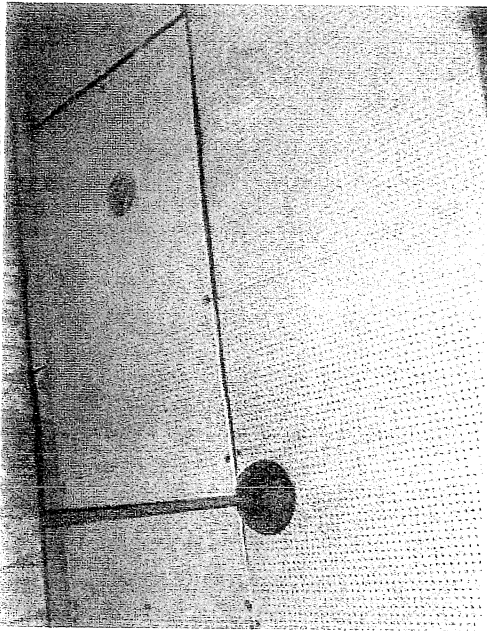












INTRODUCTION

For each area of the building, the inspector performing the inspection did the following:

1. Visually inspected the area(s) to identify the locations of all suspect Asbestos Containing Building Materials (ACBM).
2. Determine whether suspect ACBM's were friable or non-friable.
3. Identify all homogeneous areas of friable and non-friable ACBM's.
3. Assume, if necessary, that some or all of the homogeneous area(s) are Asbestos Containing Material (ACM), and for each homogeneous area that is not assumed to be ACM, collect and submit bulk samples for analysis.

DEFINITIONS:

HOMOGENEOUS AREA

An area which appears similar throughout in terms of color, texture, and date of material application.

SURFACING MATERIAL

Material in a building that is sprayed-on, troweled-on, or otherwise applied to surfaces, such as acoustical plaster on ceilings and fireproofing materials on structural members, or other materials on surfaces for acoustical, fireproofing, or other purposes.

THERMAL SYSTEM INSULATION

Means material applied to pipes, fittings, boilers breeching, tanks ducts, or other interior structural components to prevent heat loss or gain, or water condensation, or other purposes.

MISCELLANEOUS MATERIAL

Interior building material on structural components, structural members or fixtures, such as floor and ceiling tiles, and does not include surfacing material or thermal system insulation.

SAMPLING AND ANALYSIS

All samples to be analyzed by Polarized Light Microscopy (PLM). Analysis was performed in accordance with EPA 40 CFR, Part 763, Appendix A to Subpart F.

A homogeneous area was considered not to contain Asbestos Containing Material (ACM) only if the results of all samples collected from the area showed asbestos in the amounts of one (1) percent (%) or less ($\leq 1\%$). A homogeneous area contains ACM when one or more samples collected from that area shows greater than one (1) percent (%) asbestos ($> 1\%$).

FRIABLE

Any material containing more than one (1) percent (%) asbestos, that, when dry can be crumbled, pulverized, or reduced to a powder by hand pressure.

NON-FRIABLE (CATEGORY I)

Asbestos Containing packings, gaskets, resilient floor covering, and asphalt roofing products, containing more than one (1) percent (%) asbestos.

NON-FRIABLE (CATEGORY II)

Any excluding Non-Friable (Category I) Asbestos Containing Material, containing more than one (1) percent (%) asbestos.

LIMITATIONS & CONDITIONS:

Advanced Technologies shall take samples at the project location for submission to an accredited laboratory. Each sample will be analyzed to determine the levels of asbestos contained in said sample.

Due to the latent nature of asbestos, limited access to the project location, and the possibility of damage to structures on the project location, the scope of this asbestos testing is limited. This report can not be used as a guarantee that all asbestos containing materials have been identified. A report stating that samples taken does not reveal the existence of asbestos or show low levels of asbestos must not be construed as a warranty or guaranty the entire project location is consistent with the levels of asbestos found in the samples taken.

All samples, unless noted, will be analyzed using Polarized Light Microscopy (PLM). PLM is not reliable for analysis of tile or other materials when fiber size is less than 10μ . Where fiber size is less than 10μ , Transmission Electron Microscopy (TEM) analysis should be used. The detection limit for asbestos is approximately 1%.

This report excludes ACM's which are concealed in wall cavities and other non-accessible areas, such as tunnels, crawl spaces, above ceilings, pipe chases, under various flooring, etc... When these situations occur in construction, renovation, and/or demolition, etc., materials in these areas shall be treated as ACM's and handled as such by qualified and licensed asbestos personnel. If suspect material(s) are discovered or damaged during the course of activities, the material shall be considered and treated as ACM(s) so no further fiber release will occur.

All quantities listed are only ESTIMATES.

ASBESTOS CONTAINING MATERIALS

<4" Thermal Pipe Insulation & Ftggs.

CLASSIFICATION: Friable

<u>BUILDING</u>	<u>FLOOR</u>	<u>LOCATION</u>	<u>QTY</u>	<u>SAMPLE #</u>	<u>% ASBESTOS</u>
Orig. Bldg. & 1950 Add.	Attic	Attic	220		
Original Bldg.	1st Floor	Above Ceiling Grid system	280		
Original Bldg.	Basement	Mail Room	54	48-12	75% Chrysotile
Original Bldg.	Basement	Woman's RR	10		
Original Bldg.	Basement	Supplies	29		
Original Bldg.	Basement	Kitchen	314		
Original Bldg.	Basement	Coleman Office	22		
Original Bldg.	Basement	Eaton Office	11		
Original Bldg.	Basement	Sample Rm. #1-RR	18		
Original Bldg.	Basement	Purchasing Storage	48		
Original Bldg.	Basement	Purchasing	68		
Original Bldg.	Basement	Addressograph	12		
Original Bldg.	Basement	Cashier	114		
Original Bldg.	Basement	General Personnel	215		

1415

1,415 ln.ft.

ASBESTOS CONTAINING MATERIALS

4-5" Thermal Pipe Insulation & Ftggs.

CLASSIFICATION: Friable

<u>BUILDING</u>	<u>FLOOR</u>	<u>LOCATION</u>	<u>QTY</u>	<u>SAMPLE #</u>	<u>% ASBESTOS</u>
1950 Addition	1st Floor	1950 Open Office Area	91		
1950 Addition	1st Floor	Room 16	20		
1950 Addition	1st Floor	McGuire Office	18		
1950 Addition	1st Floor	Room 15	6		
1950 Addition	1st Floor	Kirschner Office	33		
1950 Addition	1st Floor	Fusso Office	10		
1950 Addition	1st Floor	Stephenson Office	20		
1950 Addition	1st Floor	Room 14	19		
1950 Addition	2nd Floor	Lower Level	171		
1950 Addition	3rd Floor	Upper Level	104		
1950 Addition	Basement	West Office Area	362		
1950 Addition	Basement	Room #4	33		
1950 Addition	Basement	Day Office	24		
1950 Addition	Basement	Workroom	50		
1950 Addition	Basement	Helm Office	35		
Adams Bldg.	1st Floor	Office Area(s)	354		
Adams Bldg.	Basement	Open Basement Area	150		
Adams Bldg.	Basement	Men's RR	68		
Adams Bldg.	Basement	Woman's RR	25		
Adams Bldg.	Basement	Cust. Rm.	40		
Adams Bldg.	Basement	Hall by RR	5		
Adams Bldg.	Basement	Stairwell	30		
Adams Bldg.	Basement	Basement Hall	10		
Original Bldg.	1st Floor	Bidne Office	25		
Original Bldg.	1st Floor	Gary Office	33		
Original Bldg.	1st Floor	Adkins Office	29		
Original Bldg.	1st Floor	Coat Room	27		
Original Bldg.	1st Floor	Wehmeyer Office	13		
Original Bldg.	1st Floor	Sec'y	14		
Original Bldg.	1st Floor	Slife Office	58		
Original Bldg.	1st Floor	Board Room	60		
Original Bldg.	1st Floor	Rath Office	60		
Original Bldg.	1st Floor	Stairwell Landing	19		
Original Bldg.	1st Floor	Walsh Office	40		
Original Bldg.	1st Floor	Thomas Office	40		
Original Bldg.	1st Floor	Room #10	15		
Original Bldg.	1st Floor	Hawk Office	15		
Original Bldg.	1st Floor	Schmeideskamp Office	15		
Original Bldg.	1st Floor	Kinne Office	28		
Original Bldg.	1st Floor	Men's RR	22		
Original Bldg.	1st Floor	Woman's RR	17		
Original Bldg.	1st Floor	Open Office Area	65		

2273

ASBESTOS CONTAINING MATERIALS

6-7" Thermal Pipe Insulation & Ftggs.

CLASSIFICATION: Friable

<u>BUILDING</u>	<u>FLOOR</u>	<u>LOCATION</u>	<u>QTY</u>	<u>SAMPLE #</u>	<u>% ASBESTOS</u>
1950 Addition	Basement	West Office Area	120		
Original Bldg.	1st Floor	Kinne Office	12		
Original Bldg.	1st Floor	Open Office Area	15	48-08	25% Chrysotile &
Original Bldg.	1st Floor	Above Ceiling Grid system	410		2% Crocidolite
Original Bldg.	2nd Floor	Room 25	11		
Original Bldg.	3rd Floor	Upper Parlor	55		
Original Bldg.	3rd Floor	Room 30	11		
Original Bldg.	Basement	Cashier	10		
Original Bldg.	Basement	A/C Room (lobby)	55		
Original Bldg.	Basement	Receiving Room	18		
Original Bldg.	Basement	Woman's Toilet (Berner)	5		
Original Bldg.	Basement	Purchasing Storage	20		
Original Bldg.	Basement	Purchasing	7		
Original Bldg.	Basement	Berner Office	173		
Original Bldg.	Basement	Corridor #1	24		
Original Bldg.	Basement	General Personnel	235		
Original Bldg.	Basement	Lobby	120		
Original Bldg.	Basement	Mech. Rm.	62		
Original Bldg.	Basement	Tunnel	408		
Original Bldg. & 1950	Attic	Attic	169		

1,940 In.ft.

ASBESTOS CONTAINING MATERIALS

8-9" Thermal Pipe Insulation & Ftggs.

CLASSIFICATION: Friable

<u>BUILDING</u>	<u>FLOOR</u>	<u>LOCATION</u>	<u>QTY</u>	<u>SAMPLE #</u>	<u>% ASBESTOS</u>
Original Bldg.	1st Floor	Misc. Room	14		
Original Bldg.	1st Floor	Gary Office	16		
Original Bldg.	1st Floor	Kinne Office	36		
Original Bldg.	2nd Floor	Telephone Operator Rm.	32		
Original Bldg.	2nd Floor	General Office Space	11		
Original Bldg.	Basement	Mail Room	54		
Original Bldg.	Basement	Coleman Office	10		
Original Bldg.	Basement	Woman's RR (Berner)	5		
Original Bldg.	Basement	Corridor #1	8		
Original Bldg.	Basement	General Personnel	78		
Original Bldg.	Basement	Mech. Rm.	42		
Original Bldg.	Basement	A/C Room (lobby)	14	48-20	3% Chrysotile
Original Bldg.	Basement	Purchasing	7		
Original Bldg.	Basement	Berner Office	38		
Original Bldg.	Basement	Mail Dist. Center	15		

ASBESTOS CONTAINING MATERIALS

≥10 Thermal Pipe Insulation

CLASSIFICATION: Friable

<u>BUILDING</u>	<u>FLOOR</u>	<u>LOCATION</u>	<u>QTY</u>	<u>SAMPLE #</u>	<u>% ASBESTOS</u>
Original Bldg.	Basement	Cashier	79		
Original Bldg.	Basement	A/C Room (lobby)	17		
Original Bldg.	Basement	A/C Room (mail rm)	8		
Original Bldg.	Basement	Lobby	35	48-20	3% Chrysotile
Original Bldg. & 1950	Attic	Attic	32		

ASBESTOS CONTAINING MATERIALS

Thermal Tank Insulation

CLASSIFICATION: Friable

BUILDING

Original Bldg.

Original Bldg.

FLOOR

Basement

Basement

LOCATION

Kitchen

Mech. Rm.

QTY

62

105

SAMPLE

48-33

48-21

% ASBESTOS

20% Chrysotile, 5% Amosite

25% Chrysotile, 5% Amosite

167 sq.ft.

ASBESTOS CONTAINING MATERIALS

9"x9" Floor Tile & Mastic

CLASSIFICATION: Non-Friable

<u>BUILDING</u>	<u>FLOOR</u>	<u>LOCATION</u>	<u>QTY</u>	<u>SAMPLE #</u>	<u>% ASBESTOS</u>
1950 Addition	Basement	West Office Area	3,480	48-16,17	10% Chrysotile
1950 Addition	Basement	Room #4	360		
1950 Addition	Basement	Day Office	160		
1950 Addition	Basement	Workroom Office	153		
1950 Addition	Basement	Helm Office	160		
1950 Addition	2nd Floor	Lower Level	4,320	48-39,40	10% Chrysotile
1950 Addition	3rd Floor	Upper Level	4,320		
Original Bldg.	Basement	Cashier	990		
Original Bldg.	Basement	Cashier-Hall	187		
Original Bldg.	Basement	Mail Room	864	48-13	15% Chrysotile
Original Bldg.	Basement	Mail Dist. Center	108		
Original Bldg.	Basement	Addressograph	776		
Original Bldg.	Basement	A/C Room (lobby)	94	48-19	15% Chrysotile
Original Bldg.	Basement	Woman's RR	135		
Original Bldg.	Basement	Woman's RR (Berner)	70		
Original Bldg.	Basement	Purchasing Storage	182		
Original Bldg.	Basement	Purchasing	541	42-23	15% Chrysotile
Original Bldg.	Basement	Coleman Office	132		
Original Bldg.	Basement	Frenchrick Office	126		
Original Bldg.	Basement	Eaton Office	162		
Original Bldg.	Basement	Kitchen Storage	100		
Original Bldg.	Basement	General Personnel	564		
Original Bldg.	Basement	GP Office #1	99		
Original Bldg.	Basement	GP Office #2	99		
Original Bldg.	Basement	GP Office #3	120		
Original Bldg.	Basement	East Stairwell Landing	30		
Original Bldg.	Basement	Home Economics Dining Rm.	238		
Original Bldg.	Basement	Recreation Room	187		
Original Bldg.	Basement	Goold Office	160		
Original Bldg.	Basement	Goold Office-Closet	14		
Original Bldg.	Basement	Sample Rm. #1	153	48-27	2% Chrysotile
Original Bldg.	Basement	Sample Rm. #2	156		
Original Bldg.	Basement	Sample Rm. #3	288		
Original Bldg.	Basement	Supplies	30		
Original Bldg.	2nd Floor	Ladies Parlor	360	48-36	10% Chrysotile
Original Bldg.	2nd Floor	Powder Room	115		
Original Bldg.	3rd Floor	Room 30	88		
Original Bldg.	3rd Floor	Upper Parlor	1,296	48-45,46	10-15% Chrysotile
Original Bldg.	Basement	Berner Office	595		
Original Bldg.	Basement	Purchasing Reception	167		

22,179 sq.ft.

ASBESTOS CONTAINING MATERIALS

12"x12" Floor Tile & Mastic

CLASSIFICATION: Non-Friable

<u>BUILDING</u>	<u>FLOOR</u>	<u>LOCATION</u>	<u>QTY</u>	<u>SAMPLE #</u>	<u>% ASBESTOS</u>
Original Bldg.	Basement	Experimental Kitchen	446	48-26	10% Chrysotile
Original Bldg.	Basement	Cafeteria	4,440	48-30,31	10% Chrysotile

4,886 sq.ft.

ASBESTOS CONTAINING MATERIALS

1/8" Asbestos Cement Board (Transite)

CLASSIFICATION: Non-Friable

<u>BUILDING</u>	<u>FLOOR</u>	<u>LOCATION</u>	<u>QTY</u>	<u>SAMPLE #</u>	<u>% ASBESTOS</u>
Adams Bldg.	1st Floor	Office Area(s)	785		
Adams Bldg.	1st Floor	Stairwell	220		
Adams Bldg.	2nd Floor	Stairwell	210		
Adams Bldg.	2nd Floor	Office Area(s)	1,512		
Adams Bldg.	3rd Floor	Stairwell	480		
Adams Bldg.	Basement	Basement Hall	55		
Adams Bldg.	Basement	Men's RR	125		
Adams Bldg.	Basement	Woman's RR	260		
Adams Bldg.	Basement	Hall by RRs	225		
Adams Bldg.	Basement	Stairwell	150		
Original Bldg.	1st Floor	Cameon Office	48	ASSUMED	
Original Bldg. & 1950	Attic	Attic	2,809		

6,879 sq.ft.

ASBESTOS CONTAINING MATERIALS

Perforated Transite Ceiling Panels

CLASSIFICATION: Non-Friable

<u>BUILDING</u>	<u>FLOOR</u>	<u>LOCATION</u>	<u>QTY</u>	<u>SAMPLE #</u>	<u>% ASBESTOS</u>
Original Bldg.	Basement	Purchasing	541	48-25	20% Chrysotile
Original Bldg.	Basement	Purchasing Storage	182		
Original Bldg.	Basement	Frenchrick Office	126		
Original Bldg.	Basement	Eaton Office	162		
Original Bldg.	Basement	Berner Office	595		
Original Bldg.	Basement	Purchasing Reception	167		

1,773 sq.ft.

ASBESTOS CONTAINING MATERIALS

Sprayed-on Acoustical Ceiling Texture

CLASSIFICATION: Friable

BUILDING

Original Bldg.

FLOOR

Basement

LOCATION

Home Economics Dining Rm.

QTY

238

SAMPLE #

48-29

% ASBESTOS

3% Chrysotile

238 sq.ft.

ASBESTOS CONTAINING MATERIALS

Exterior Mastic (blk/white) Coating on Cork

CLASSIFICATION: Friable

<u>BUILDING</u>	<u>FLOOR</u>	<u>LOCATION</u>	<u>QTY</u>	<u>SAMPLE #</u>	<u>% ASBESTOS</u>
Adams Bldg.	Basement	Freezer	92	A-2	8% Chrysotile
Orig. Bldg. & 1950 Add.	Attic	Attic	3,056	48-47	50% Chrysotile
Original Bldg.	Basement	Tunnel (Ceiling)	840	48-22	5% Chrysotile
Original Bldg.	Basement	Sample Rm.3-Cooler	24	48-28	5% Chrysotile
Original Bldg.	Basement	Supplies - 3 Coolers	384		
Original Bldg.	Basement	Cashier	240		
Original Bldg.	Basement	Cashier Hall	40		

4,676 sq.ft.

ASBESTOS CONTAINING MATERIALS

1/4" Mag-type Insulation/Paper on Cork

CLASSIFICATION: Friable

BUILDING

Original Bldg.

Original Bldg.

FLOOR

Basement

Attic

LOCATION

A/C Room (mail rm.)

Attic

QTY

130

150

SAMPLE #

48-15

% ASBESTOS

30% Chrysotile, 3% Amosite

280 sq.ft.

ASBESTOS CONTAINING MATERIALS

Cork Pipe Wrap

CLASSIFICATION: Non-Friable

BUILDING

Original Bldg.

FLOOR

Basement

LOCATION

Sample Rm. #2 - Closet

QTY

2

SAMPLE #

ASSUMED

% ASBESTOS

2 ln.ft.

ASBESTOS CONTAINING MATERIALS

12"x12" Ceiling Tile Adhesive

CLASSIFICATION: Non-Friable

<u>BUILDING</u>	<u>FLOOR</u>	<u>LOCATION</u>	<u>QTY</u>	<u>SAMPLE #</u>	<u>% ASBESTOS</u>
Original Bldg.	Basement	Telephone Equipment Room	168	48-10	5% Chrysotile
Original Bldg.	Basement	Addressograph	200		

368 sq.ft.

ASBESTOS CONTAINING MATERIALS

Light Fixture Backing Paper

CLASSIFICATION: Friable

BUILDING

Original Bldg.

FLOOR

1st Floor

LOCATION

Coat Room

QTY

1

SAMPLE #

ASSUMED

% ASBESTOS

1 sq.ft.

ASBESTOS CONTAINING MATERIALS

"Slate-type" Asbestos Cement Board Siding

CLASSIFICATION: Non-Friable

BUILDING
Original Bldg.

FLOOR
1st Floor

LOCATION
North Entry

QTY
150

SAMPLE #
ASSUMED

% ASBESTOS

150 sq.ft.

ASBESTOS CONTAINING MATERIALS

Asbestos Duct Cloth/Paper

CLASSIFICATION: Friable

<u>BUILDING</u>	<u>FLOOR</u>	<u>LOCATION</u>	<u>QTY</u>	<u>SAMPLE #</u>	<u>% ASBESTOS</u>
Adams Bldg.	Basement	Open Basement Area	25		
Original Bldg.	Attic	Attic-South Center	10	48-50	50% Chrysotile

35 sq.ft.

ASBESTOS CONTAINING MATERIALS

Joint Compound (on drywall)

CLASSIFICATION: Friable

<u>BUILDING</u>	<u>FLOOR</u>	<u>LOCATION</u>	<u>QTY</u>	<u>SAMPLE #</u>	<u>% ASBESTOS</u>
1950 Addition	1st Floor	Stephenson Office	216		
1950 Addition	1st Floor	Justis Office	224		
1950 Addition	1st Floor	Fusso Office	216		
1950 Addition	1st Floor	Kirschner Office	176		
1950 Addition	1st Floor	Room 14	196		
1950 Addition	Basement	Helm Office	126	48-18	2% Chrysotile
1950 Addition	Basement	Workroom	165		
1950 Addition	Basement	Day Office	156		
1950 Addition	Basement	Room #4	213		
Original Bldg.	1st Floor	Newman Office	196	48-07	2% Chrysotile
Original Bldg.	1st Floor	B. Smith Office	140		
Original Bldg.	1st Floor	Room 13	264		
Original Bldg.	1st Floor	Adkins Office	220		
Original Bldg.	1st Floor	Gary Office	228		
Original Bldg.	1st Floor	Bidne Office	152		
Original Bldg.	2nd Floor	Conf. #3	260		
Original Bldg.	2nd Floor	Blakeslee Office	208		
Original Bldg.	2nd Floor	Morrison Office	216		
Original Bldg.	2nd Floor	Swisher Office	236		

3,808 sq.ft.

ASBESTOS CONTAINING MATERIALS

Black Tar (Roofing Cement)

CLASSIFICATION: Non-Friable

<u>BUILDING</u>	<u>FLOOR</u>	<u>LOCATION</u>	<u>QTY</u>	<u>SAMPLE #</u>	<u>% ASBESTOS</u>
Original Bldg.	Roof	Coping Stone& Parapet Walls	350	ASSUMED	
1950 Addition	Roof	Coping Stone& Parapet Walls	109	ASSUMED	
Adams Bldg.	Roof	Coping Stone& Parapet Walls	85	ASSUMED	

544 sq.ft.

ASBESTOS CONTAINING MATERIALS

Roof Flashing

CLASSIFICATION: Non-Friable

<u>BUILDING</u>	<u>FLOOR</u>	<u>LOCATION</u>	<u>QTY</u>	<u>SAMPLE #</u>	<u>% ASBESTOS</u>
Adams Bldg.	Roof	Roof	693	A-7, A-8	10% Chrysotile
1950 Addition	Roof	Roof	840	48-52	10% Chrysotile
Original Bldg.	Roof	Roof (far east end) Green	210	48-57	3% Chrysotile

1,743 sq.ft.

ASBESTOS CONTAINING MATERIALS

Roofing Felts

CLASSIFICATION: Non-Friable

<u>BUILDING</u>	<u>FLOOR</u>	<u>LOCATION</u>	<u>QTY</u>	<u>SAMPLE #</u>	<u>% ASBESTOS</u>
Adams Bldg.	Roof	Roof	3,057	A-6	20% Chrysotile
Original Bldg.	Roof	Roof (far east end) Pitched Area	2,880	48-58	50% Chrysotile

5,937 sq.ft.

ASBESTOS CONTAINING MATERIALS

Exterior Window & Door Caulk (white)

CLASSIFICATION: Non-Friable

<u>BUILDING</u>	<u>FLOOR</u>	<u>LOCATION</u>	<u>QTY</u>	<u>SAMPLE #</u>	<u>% ASBESTOS</u>
1950 Addition	Exterior	Exterior Windows & Doors	1,458	48-59	5% Chrysotile
Original Bldg.	Exterior	Exterior Windows & Doors	4,263		
Adams Bldg.	Exterior	Exterior Windows & Doors	240		

5,961 ln.ft.

Rath Administrative Building # 45
300 Sycamore
Waterloo, IA 50703

2/8/99

BULK SAMPLE INVENTORY

SAMPLE #	DESCRIPTION	LOCATION	%	ASBESTOS TYPE	CLASS	HOMO AREA	AMOUNT	CONDITION	FRIABLE	ACCESS	RESPONSE
48-01	Battleship Linoleum	First Floor Throughout		None Detected	M	1		U	N	A	N
48-02	Plaster/Skim Coat	Women's Restroom First Floor		None Detected	S	2		U	F	A	N
48-03	Parkay Flooring & Glue	Slyfe Office		None Detected	M	3		U	N	A	N
48-04	Suspended Ceiling Tile	North Entry		None Detected	M	4		U	F	A	N
48-05	Ceiling Grid Metal Pan Insulation	Throughout		None Detected	M	5		U	F	A	N
48-06	Plaster / Skim Coat	South Entry / Throughout		None Detected	S	6		U	F	A	N
48-07	Drywall / Joint Compound	NE Office Area - Above Metal Walls	2%	Chrysotile	S	7	3,808 sq.ft.	G	F	A	A
48-08	Vertical Pipe Insulation - Mag Block	First Floor along north wall	25%	Chrysotile/Crocidoli	T	8	1,940 sq.ft.	R	F	A	A
48-09	Plaster / Skim Coat	Basement - Receiving Room		None Detected	S	9		U	F	A	N
48-10	12" x 12" Ceiling Tile Adhesive	Basement - Phone & Addressograph	5%	Chrysotile	M	10	368 sq. ft.	U	N	A	A
48-11	Brown Linoleum	Basement - Phone Room		None Detected	M	11		U	N	A	N
48-12	Air Cell Insulation	Basement - Mail Dist. Room Hallway	75%	Chrysotile	T	12	7,169 ln.ft.	U	F	A	A
48-13	9" x 9" Floor Tile & Mastic	Basement - Mail Dist. Room Hallway	15%	Chrysotile	M	13	22,179 sq. ft.	U	N	A	A
48-14	Plaster from Beam	Basement - Mail Room		None Detected	S	14		U	N	A	N
48-15	Insulation layered in between cork	Basement - A. C. Room by mail room	30%	Chrysotile/Amosite	T	15	40 sq. ft.	U	F	A	A
48-16	9" x 9" Black Floor Tile & Mastic	Basement - West Open Office Area	10%	Chrysotile	M	16	22,179 sq. ft.	U	N	A	A
48-17	9" x 9" Red Floor Tile & Mastic	Basement - West Open Office Area	10%	Chrysotile	M	17	22,179 sq. ft.	U	N	A	A
48-18	Drywall / Joint Compound	Basement - West Open Office Area	2%	Chrysotile	S	18	3,808 sq.ft.	G	F	A	A
48-19	9" x 9" White Floor Tile & Mastic	Basement - A. C. Room (Lobby)	15%	Chrysotile	M	19	22,179 sq. ft.	U	N	A	A

CLASSIFICATION
T - Thermal
M - Miscellaneous
S - Surfacing

CONDITION
G - Good
R - Repairable
U - Unrepairable

FRIABLE
F - Friable
N - Non Friable

ACCESS
N - Not Accessible
R - Restricted Access
A - Accessible

RESPONSE
N - None Needed
R - Repair
A - Remove

Rath Administrative Building - #45
300 Sycamore
Waterloo, IA 50703

2/8/99

BULK SAMPLE INVENTORY

SAMPLE #	DESCRIPTION	LOCATION	ASBESTOS TYPE	%	CLASS	HOMO AREA	AMOUNT	CONDITION	FRIABLE	ACCESS	RESPONSE
48-20	Cardboard Pipe Insulation	Basement - A. C. Room (Lobby)	Chrysotile	3%	T	20	551 ln.ft.	U	F	A	A
48-21	Tank Insulation	Basement - Mechanical Room	Chrysotile/Amosite	25%	T	21	167 sq. ft.	U	F	A	A
48-22	Mastic Over Cork Insulation	Basement - South Tunnel Ceiling	Chrysotile	5%	M	22	4,676 sq. ft.	G	N	A	A
48-23	9" x 9" Floor Tile	Basement - Purchasing Dept. &	Chrysotile	15%	M	23	22,179 sq. ft.	U	N	A	A
48-24	Cardboard Pipe Insulation	Basement - Berner Room (Didn't get	None Detected		T	24		U	F	A	A
48-25	Transite Ceiling Tile	Basement - Berner Room & Adjoining	Chrysotile	20%	M	25	1,773 sq. ft.	U	N	A	A
48-26	12" x 12" Black Floor Tile & Mastic	Basement - Experimental Kitchen	Chrysotile	10%	M	26	4,886 sq. ft.	U	N	A	A
48-27	9" x 9" Red with white Floor Tile &	Basement - Sample Rooms	Chrysotile	2%	M	27	22,179 sq. ft.	U	N	A	A
48-28	Black Mastic over cork wrap	Basement - Sample Room Freezer	Chrysotile	5%	M	28	4,676 sq. ft.	G	N	A	A
48-29	Acoustical Spray-on Ceiling	Basement - Home Economics Dining	Chrysotile	3%	S	29	238 sq. ft.	G	F	A	A
48-30	12" x 12" Black Floor Tile & Mastic	Basement - Cafeteria	Chrysotile	10%	M	30	4,886 sq. ft.	U	N	A	A
48-31	12" x 12" Red Floor Tile & Mastic	Basement - Cafeteria	Chrysotile	10%	M	31	4,886 sq. ft.	U	N	A	A
48-33	Tank Insulation	Basement - Kitchen along south wall	Chrysotile/Amosite	20%	T	33	167 sq. ft.	U	F	A	A
48-34	Cement Plaster Freezer Exterior	Basement - Kitchen Freezer's	None Detected		M	34		U	N	A	N
48-35	Black Mastic Over Cork Insulation	Basement - Kitchen Freezer's	None Detected		S	35		U	N	A	A
48-36	9" x 9" Floor Tile & Mastic	Ladies Parlor - 1 1/2 Story	Chrysotile	10%	M	36	22,179 sq. ft.	U	N	A	A
48-37	Plaster / Skim Coat	Ladies Parlor - 1 1/2 Story	None Detected		S	37		U	N	A	N
48-38	Vibration Cloth	1950 Addition Second Floor	None Detected		T	38		U	F	A	N
48-39	9" x 9" Red Floor Tile & Mastic	1950 Addition Second Floor	Chrysotile	15%	M	39	22,179 sq. ft.	U	N	A	A

CLASSIFICATION
T - Thermal
M - Miscellaneous
S - Surfacing

CONDITION
G - Good
R - Repairable
U - Unrepairable

FRIABLE
F - Friable
N - Non Friable

ACCESS
N - Not Accessible
R - Restricted Access
A - Accessible

RESPONSE
N - None Needed
R - Repair
A - Remove

1/15/99

ENVIRONMENTAL MANAGEMENT CONSULTANTS
BULK MATERIAL REPORT

Page 1 of 3

REPORT Laboratory Analysis: BULK MATERIAL

Client: ADVANCED TECHNOLOGIES CORP.

Reported to: MICHAEL LLEWELLYN

Sampled from: RATH ADMINISTRATIVE BLDG

Shipped via: FEDERAL EXPRESS

LAB: 54276

Methodology: EPA 600/M4-82-020

P/O#: 1ST FLOOR

Proj: H11720

By: Client

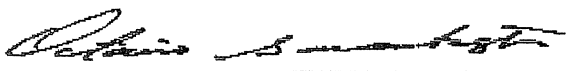
Received: 2/12/99

Reported: 2/15/99

SAMPLE	IDENTIFICATION	PARAMETER	TEST RESULTS
01	48-1 linoleum dk. brown BATTLESHIP	Asbestos	None detected. This sample contains approx. 10% Cellulose, 90% Quartz, CaCO, Binder
02A	48-2 plaster - scratch coat off white, brown, black WOMAN'S RR	Asbestos	None detected. This sample contains approx. trace Cellulose, 99% Quartz, CaSO, Mica, Binder
02B	48-2 plaster, skim coat white WOMAN'S RR	Asbestos	None detected. This sample contains approx. 100% Quartz, CaCO, CaSO, Mica, Binder
03A	48-3 parquet, flooring black SLYFE OFFICE	Asbestos	None detected. This sample contains approx. 40% Cellulose, 5% Synthetics, 55% Quartz, CaCO, Binder
03B	48-3 glue black SLYFE OFFICE	Asbestos	None detected. This sample contains approx. 10% Cellulose, 3% Synthetics, 87% Quartz, Binder

THE REPORT APPLIES TO THE STANDARDS OR PROCEDURES IDENTIFIED AND TO THE SAMPLE(S) TESTED. THE TEST RESULTS ARE NOT NECESSARILY INDICATIVE OR REPRESENTATIVE OF THE QUALITIES OF THE LOT FROM WHICH THE SAMPLE WAS TAKEN OR OF APPARENTLY IDENTICAL OR SIMILAR PRODUCTS, NOR DO THEY REPRESENT AN ONGOING QUALITY ASSURANCE PROGRAM UNLESS SO NOTED. THESE REPORTS ARE FOR THE EXCLUSIVE USE OF THE ADDRESSED CLIENT AND ARE RENDERED UPON THE CONDITION THAT THEY WILL NOT BE REPRODUCED WHOLLY OR IN PART FOR ADVERTISING OR OTHER PURPOSES OVER OUR SIGNATURE OR IN CONNECTION WITH OUR NAME WITHOUT SPECIAL WRITTEN PERMISSION. SAMPLES NOT DESTROYED IN TESTING ARE RETAINED A MAXIMUM OF THIRTY DAYS.

ACCREDITED BY THE NATIONAL INSTITUTE OF STANDARDS AND TECHNOLOGY, VOLUNTARY LABORATORY ACCREDITATION PROGRAM FOR SELECTED TEST METHOD FOR ASBESTOS. THE ACCREDITATION OR ANY REPORTS GENERATED BY THIS LABORATORY IN NO WAY CONSTITUTES OR IMPLIES PRODUCT CERTIFICATION, APPROVAL, OR ENDORSEMENT BY THE NATIONAL INSTITUTE OF STANDARDS AND TECHNOLOGY. ALL ANALYSES ARE DERIVED FROM CALIBRATED VISUAL ESTIMATE UNLESS OTHERWISE NOTED. POLARIZED-LIGHT IS NOT CONSISTENTLY RELIABLE IN DETECTING ASBESTOS IN FLOOR COVERINGS AND SIMILAR NON-FRIABLE ORGANICALLY BOUND MATERIALS. QUANTITATIVE TRANSMISSION ELECTRON MICROSCOPY IS CURRENTLY THE ONLY METHOD THAT CAN BE USED TO DETERMINE IF THIS MATERIAL CAN BE CONSIDERED OR TREATED AS NON-ASBESTOS-CONTAINING.



Analyst: Octavio Gavarreteayestas



By: Kurt Kettler

NJVLAP Accreditation #1926, CA ELAP #1913, TX DOH #30-0094

7342 EAST THOMAS ROAD SCOTTSDALE, ARIZONA 85251-7216 (602) 990-2069 FAX: (602) 990-8468

2/15/99

ENVIRONMENTAL MANAGEMENT CONSULTANTS

Page 2 of 3

BULK MATERIAL REPORT

REPORT Laboratory Analysis: BULK MATERIAL

Client: ADVANCED TECHNOLOGIES CORP.

Reported to: MICHAEL LLEWELLYN

Sampled from: RATH ADMINISTRATIVE BLDG

Shipped via: FEDERAL EXPRESS

LAB: 54276

Methodology: EPA 600/M4-82-020

P/O#: 1ST FLOOR

Proj: H11720

By: Client

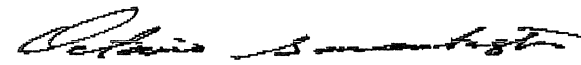
Received: 2/12/99

Reported: 2/15/99

SAMPLE	IDENTIFICATION	PARAMETER	TEST RESULTS
04	48-4 suspended, ceiling tile beige, white NORTH ENTRY	Asbestos	None detected. This sample contains approx. 45% Cellulose, 35% Mineral Wool, 20% Perlite, Quartz, Binder
05	48-5 ceiling, insulation yellow, brown	Asbestos	None detected. This sample contains approx. trace Cellulose, 95% Fiberglass, 4% Quartz, Binder
06A	48-6 plaster - scratch coat off white, brown, black SOUTH ENTRY	Asbestos	None detected. This sample contains approx. trace Cellulose, 1% Fiberglass, 98% Quartz, CaCO , CaSO, Mica, Binder
06B	48-6 plaster, skim coat white SOUTH ENTRY	Asbestos	None detected. This sample contains approx. 100% Quartz, CaCO, CaSO, Binder
07A	48-7 drywall white, tan NE OFFICE AREA	Asbestos	None detected. This sample contains approx. 10% Cellulose, 90% Perlite, Quartz, CaCO, CaSO

THIS REPORT APPLIES TO THE STANDARDS OR PROCEDURES IDENTIFIED AND TO THE SAMPLE(S) TESTED. THE TEST RESULTS ARE NOT NECESSARILY INDICATIVE OR REPRESENTATIVE OF THE QUALITIES OF THE LOT FROM WHICH THE SAMPLE WAS TAKEN OR OF APPARENTLY IDENTICAL OR SIMILAR PRODUCTS, NOR DO THEY REPRESENT AN ONGOING QUALITY ASSURANCE PROGRAM UNLESS SO NOTED. THESE REPORTS ARE FOR THE EXCLUSIVE USE OF THE ADDRESSED CLIENT AND ARE RENDERED UPON THE CONDITION THAT THEY WILL NOT BE REPRODUCED WHOLLY OR IN PART FOR ADVERTISING OR OTHER PURPOSES OVER OUR SIGNATURE OR IN CONNECTION WITH OUR NAME WITHOUT SPECIAL WRITTEN PERMISSION. SAMPLES NOT DESTROYED IN TESTING ARE RETAINED A MAXIMUM OF THIRTY DAYS.

CREDITED BY THE NATIONAL INSTITUTE OF STANDARDS AND TECHNOLOGY, VOLUNTARY LABORATORY ACCREDITATION PROGRAM FOR SELECTED TEST METHOD FOR ASBESTOS. THE CREDITATION OR ANY REPORTS GENERATED BY THIS LABORATORY IN NO WAY CONSTITUTES OR IMPLIES PRODUCT CERTIFICATION, APPROVAL, OR ENDORSEMENT BY THE NATIONAL INSTITUTE OF STANDARDS AND TECHNOLOGY. ALL ANALYSES ARE DERIVED FROM CALIBRATED VISUAL ESTIMATE UNLESS OTHERWISE NOTED. POLARIZED-LIGHT IS NOT CONSISTENTLY RELIABLE IN DETECTING ASBESTOS IN FLOOR COVERINGS AND SIMILAR NON-FRIABLE ORGANICALLY BOUND MATERIALS. QUANTITATIVE TRANSMISSION ELECTRON MICROSCOPY IS CURRENTLY THE ONLY METHOD THAT CAN BE USED TO DETERMINE IF THIS MATERIAL CAN BE CONSIDERED OR TREATED AS NON-ASBESTOS-CONTAINING.



Analyst: Octavio Gavarreteayestas



By: Kurt Kettler

/LAP Accreditation #1926, CA ELAP #1913, TX DOH #30-0094

342 EAST THOMAS ROAD SCOTTSDALE, ARIZONA 85251-7216 (602) 990-2069 FAX: (602) 990-8468

2/15/99

ENVIRONMENTAL MANAGEMENT CONSULTANTS
BULK MATERIAL REPORT

Page 3 of 3

REPORT Laboratory Analysis: BULK MATERIAL
Client: ADVANCED TECHNOLOGIES CORP.
Reported to: MICHAEL LLEWELLYN
Sampled from: RATH ADMINISTRATIVE BLDG
Shipped via: FEDERAL EXPRESS

LAB: 54276

Methodology: EPA 600/M4-82-020

P/O#: 1ST FLOOR

Proj: H11720

By: Client

Received: 2/12/99

Reported: 2/15/99

AMPLE	IDENTIFICATION	PARAMETER	TEST RESULTS
07B	48-7 joint compound white, brown NE OFFICE AREA	Asbestos	Positive. This sample contains approx. 2% Chrysotile, 1% Cellulose, 97% Quartz, CaCO ₃ , Mica, Binder, Paint
08A	48-8 vertical, pipe, riser, wrap off white, beige (MAG BLACK)	Asbestos	None detected. This sample contains approx. 60% Cellulose, 40% Quartz, Binder
08B	48-8 vertical, pipe, riser, insulation white (MAG BLACK)	Asbestos	Positive. This sample contains approx. 25% Chrysotile, 2% Crocidolite, 5% Mineral Wool, 68% Quartz, CaCO ₃ , CaSO ₄ , Diatoms

THIS REPORT APPLIES TO THE STANDARDS OR PROCEDURES IDENTIFIED AND TO THE SAMPLE(S) TESTED. THE TEST RESULTS ARE NOT NECESSARILY INDICATIVE OR REPRESENTATIVE OF THE QUALITIES OF THE LOT FROM WHICH THE SAMPLE WAS TAKEN OR OF APPARENTLY IDENTICAL OR SIMILAR PRODUCTS, NOR DO THEY REPRESENT AN ONGOING QUALITY ASSURANCE PROGRAM UNLESS SO NOTED. THESE REPORTS ARE FOR THE EXCLUSIVE USE OF THE ADDRESSED CLIENT AND ARE RENDERED UPON THE CONDITION THAT THEY WILL NOT BE REPRODUCED WHOLLY OR IN PART FOR ADVERTISING OR OTHER PURPOSES OVER OUR SIGNATURE OR IN CONNECTION WITH OUR NAME WITHOUT SPECIAL WRITTEN PERMISSION. SAMPLES NOT DESTROYED IN TESTING ARE RETAINED A MAXIMUM OF THIRTY DAYS.

ACCREDITED BY THE NATIONAL INSTITUTE OF STANDARDS TECHNOLOGY, VOLUNTARY LABORATORY ACCREDITATION PROGRAM FOR SELECTED TEST METHOD FOR ASBESTOS. THE ACCREDITATION OR ANY REPORTS GENERATED BY THIS LABORATORY IN NO WAY CONSTITUTES OR IMPLIES PRODUCT CERTIFICATION, APPROVAL, OR ENDORSEMENT BY THE NATIONAL INSTITUTE OF STANDARDS AND TECHNOLOGY. ALL ANALYSES ARE DERIVED FROM CALIBRATED VISUAL ESTIMATE UNLESS OTHERWISE NOTED. POLARIZED-LIGHT IS NOT CONSISTENTLY RELIABLE IN DETECTING ASBESTOS IN FLOOR COVERINGS AND SIMILAR NON-FRIABLE ORGANICALLY SOUND MATERIALS. QUANTITATIVE TRANSMISSION ELECTRON MICROSCOPY IS CURRENTLY THE ONLY METHOD THAT CAN BE USED TO DETERMINE IF THIS MATERIAL CAN BE CONSIDERED OR TREATED AS NON-ASBESTOS-CONTAINING.

Analyst: Octavio Gavarreteayas

By: Kurt Kettler

LAP Accreditation #1926, CA ELAP #1913, TX DOH #30-0094

42 EAST THOMAS ROAD SCOTTSDALE, ARIZONA 85251-7216 (602) 990-2069 FAX: (602) 990-8468

2/15/99

ENVIRONMENTAL MANAGEMENT CONSULTANTS

Page 1 of 9

BULK MATERIAL REPORT

REPORT Laboratory Analysis: BULK MATERIAL

Client: ADVANCED TECHNOLOGIES CORP.

Reported to: MICHAEL LLEWELLYN

Sampled from: RATH ADMINISTRATIVE BLDG

Shipped via: FEDERAL EXPRESS

LAB: 54278

Methodology: EPA 600/M4-82-020

P/O#:

Proj: H11720

By: Client

Received: 2/12/99

Reported: 2/15/99

AMPLE	IDENTIFICATION	PARAMETER	TEST RESULTS
01	48-9 plaster, skim coat off white, brown, black BSMT W. OF STAIRS	Asbestos	None detected. This sample contains approx. trace Cellulose, 99% Quartz, CaSO, Mica
02A	48-10 ceiling tile tan, off white BSMT PHONE & ADDRESSOG	Asbestos	None detected. This sample contains approx. 95% Cellulose, 5% Quartz, Binder, Paint
02B	48-10 glue dk. brown BSMT PHONE & ADDRESSOG	Asbestos	Positive. This sample contains approx. 5% Chrysotile, 2% Cellulose, 93% Quartz, CaCO, Binder, Diatoms
03A	48-11 linoleum brown, black BSMT PHONE RM	Asbestos	None detected. This sample contains approx. 20% Cellulose, 80% Quartz, CaCO, Binder
03B	48-11 mastic brown BSMT PHONE RM	Asbestos	None detected. This sample contains approx. 1% Cellulose, 99% Quartz, CaCO, CaSO, Mica, Binder

THIS REPORT APPLIES TO THE STANDARDS OR PROCEDURES IDENTIFIED AND TO THE SAMPLE(S) TESTED. THE TEST RESULTS ARE NOT NECESSARILY INDICATIVE OR REPRESENTATIVE OF THE QUALITIES OF THE LOT FROM WHICH THE SAMPLE WAS TAKEN OR OF APPARENTLY IDENTICAL OR SIMILAR PRODUCTS, NOR DO THEY REPRESENT AN ONGOING QUALITY ASSURANCE PROGRAM UNLESS SO NOTED. THESE REPORTS ARE FOR THE EXCLUSIVE USE OF THE ADDRESSED CLIENT AND ARE RENDERED UPON THE CONDITION THAT THEY WILL NOT BE REPRODUCED WHOLLY OR IN PART FOR ADVERTISING OR OTHER PURPOSES OVER OUR SIGNATURE OR IN CONNECTION WITH OUR NAME WITHOUT SPECIAL WRITTEN PERMISSION. SAMPLES NOT DESTROYED IN TESTING ARE RETAINED A MAXIMUM OF THIRTY DAYS.

CREDITED BY THE NATIONAL INSTITUTE OF STANDARDS TECHNOLOGY, VOLUNTARY LABORATORY ACCREDITATION PROGRAM FOR SELECTED TEST METHOD FOR ASBESTOS. THE ACCREDITATION OR ANY REPORTS GENERATED BY THIS LABORATORY IN NO WAY CONSTITUTES OR IMPLIES PRODUCT CERTIFICATION, APPROVAL, OR ENDORSEMENT BY THE NATIONAL INSTITUTE OF STANDARDS AND TECHNOLOGY. ALL ANALYSES ARE DERIVED FROM CALIBRATED VISUAL ESTIMATE UNLESS OTHERWISE NOTED. POLARIZED-LIGHT IS NOT CONSISTENTLY RELIABLE IN DETECTING ASBESTOS IN FLOOR COVERINGS AND SIMILAR NON-FRIABLE ORGANICALLY BOUND MATERIALS. QUANTITATIVE TRANSMISSION ELECTRON MICROSCOPY IS CURRENTLY THE ONLY METHOD THAT CAN BE USED TO DETERMINE IF THIS MATERIAL CAN BE CONSIDERED OR TREATED AS NON-ASBESTOS-CONTAINING.

Analyst: Octavio Gavarreteayestas

By: Kurt Kettler

VLAP Accreditation #1926, CA ELAP #1913, TX DOH #30-0094

42 EAST THOMAS ROAD SCOTTSDALE, ARIZONA 85251-7216 (602) 990-2099 FAX: (602) 990-8468

2/15/99

ENVIRONMENTAL MANAGEMENT CONSULTANTS
BULK MATERIAL REPORT

Page 2 of 9

REPORT Laboratory Analysis: BULK MATERIAL

Client: ADVANCED TECHNOLOGIES CORP.

Reported to: MICHAEL LLEWELLYN

Sampled from: RATH ADMINISTRATIVE BLDG

Shipped via: FEDERAL EXPRESS

LAB: 54278

Methodology: EPA 600/M4-82-020

P/O#:

Proj: H11720

By: Client

Received: 2/12/99

Reported: 2/15/99

AMPLE	IDENTIFICATION	PARAMETER	TEST RESULTS
04	48-12 air cell, insulation gray, beige BSMT HALLWAY	Asbestos	Positive. This sample contains approx. 75% Chrysotile, 5% Cellulose, 20% Quartz, Binder
05A	48-13 9"x9" floor tile brown BSMT HALL W OF STAIRS	Asbestos	Positive. This sample contains approx. 15% Chrysotile, 85% Quartz, Binder
05B	48-13 mastic black BSMT HALL W OF STAIRS	Asbestos	Positive. This sample contains approx. 2% Chrysotile, 1% Cellulose, 97% Quartz, CaCO ₃ , Binder
06	48-14 plaster, skim coat off white, beige BSMT MAIL RM	Asbestos	None detected. This sample contains approx. trace Cellulose, 99% Quartz, CaCO ₃ , Binder
07A	48-15 cork, wrap dk. brown BSMT AC RM BY MAIL RM	Asbestos	None detected. This sample contains approx. 100% Quartz, Binder, Cork

THIS REPORT APPLIES TO THE STANDARDS OR PROCEDURES IDENTIFIED AND TO THE SAMPLE(S) TESTED. THE TEST RESULTS ARE NOT NECESSARILY INDICATIVE OR REPRESENTATIVE OF THE QUALITIES OF THE LOT FROM WHICH THE SAMPLE WAS TAKEN OR OF APPARENTLY IDENTICAL OR SIMILAR PRODUCTS, NOR DO THEY REPRESENT AN ONGOING QUALITY ASSURANCE PROGRAM UNLESS SO NOTED. THESE REPORTS ARE FOR THE EXCLUSIVE USE OF THE ADDRESSED CLIENT AND ARE RENDERED UPON THE CONDITION THAT THEY WILL NOT BE REPRODUCED WHOLLY OR IN PART FOR ADVERTISING OR OTHER PURPOSES OVER OUR SIGNATURE OR IN CONNECTION WITH OUR NAME WITHOUT SPECIAL WRITTEN PERMISSION. SAMPLES NOT DESTROYED IN TESTING ARE RETAINED A MAXIMUM OF THIRTY DAYS.

CREDITED BY THE NATIONAL INSTITUTE OF STANDARDS, TECHNOLOGY, VOLUNTARY LABORATORY ACCREDITATION PROGRAM FOR SELECTED TEST METHOD FOR ASBESTOS. THE ACCREDITATION OR ANY REPORTS GENERATED BY THIS LABORATORY IN NO WAY CONSTITUTES OR IMPLIES PRODUCT CERTIFICATION, APPROVAL, OR ENDORSEMENT BY THE NATIONAL INSTITUTE OF STANDARDS AND TECHNOLOGY. ALL ANALYSES ARE DERIVED FROM CALIBRATED VISUAL ESTIMATE UNLESS OTHERWISE NOTED. POLARIZED-LIGHT IS NOT CONSISTENTLY RELIABLE IN DETECTING ASBESTOS IN FLOOR COVERINGS AND SIMILAR NON-FRIABLE ORGANICALLY BOUND MATERIALS. QUANTITATIVE TRANSMISSION ELECTRON MICROSCOPY IS CURRENTLY THE ONLY METHOD THAT CAN BE USED TO DETERMINE IF THIS MATERIAL CAN BE CONSIDERED OR TREATED AS NON-ASBESTOS-CONTAINING.

Analyst: Octavio Gavarreteayestas

By: Kurt Kettler

VLAP Accreditation #1926, CA ELAP #1913, TX DOH #30-0094

142 EAST THOMAS ROAD SCOTTSDALE, ARIZONA 85251-7216 (602) 990-2069 FAX: (602) 990-8468

2/15/99

ENVIRONMENTAL MANAGEMENT CONSULTANTS
BULK MATERIAL REPORT

Page 3 of 9

REPORT Laboratory Analysis: BULK MATERIAL

Client: ADVANCED TECHNOLOGIES CORP.

Reported to: MICHAEL LLEWELLYN

Sampled from: RATH ADMINISTRATIVE BLDG

Shipped via: FEDERAL EXPRESS

LAB: 54278

Methodology: EPA 600/M4-82-020

P/O#:

Proj: H11720

By: Client

Received: 2/12/99

Reported: 2/15/99

AMPLE	IDENTIFICATION	PARAMETER	TEST RESULTS
07B	48-15 insulation white BSMT AC RM BY MAIL RM	Asbestos	Positive. This sample contains approx. 30% Chrysotile, 3% Amosite, 67% Quartz, CaCO
08A	48-16 9"x9" floor tile black BSMT W. RM	Asbestos	Positive. This sample contains approx. 10% Chrysotile, 90% Quartz, CaCO, Binder
08B	48-16 mastic black BSMT W. RM	Asbestos	None detected. This sample contains approx. 100% Quartz, CaCO, Binder
09A	48-17 9"x9" floor tile red, brown BSMT W. RM	Asbestos	Positive. This sample contains approx. 10% Chrysotile, 90% Quartz, CaCO, Binder
09B	48-17 mastic black BSMT W. RM	Asbestos	None detected. This sample contains approx. 100% Quartz, CaCO, Binder

THIS REPORT APPLIES TO THE STANDARDS OR PROCEDURES IDENTIFIED AND TO THE SAMPLE(S) TESTED. THE TEST RESULTS ARE NOT NECESSARILY INDICATIVE OR REPRESENTATIVE OF THE QUALITIES OF THE LOT FROM WHICH THE SAMPLE WAS TAKEN OR OF APPARENTLY IDENTICAL OR SIMILAR PRODUCTS, NOR DO THEY REPRESENT AN ONGOING QUALITY ASSURANCE PROGRAM UNLESS SO NOTED. THESE REPORTS ARE FOR THE EXCLUSIVE USE OF THE ADDRESSED CLIENT AND ARE RENDERED UPON THE CONDITION THAT THEY WILL NOT BE REPRODUCED WHOLLY OR IN PART FOR ADVERTISING OR OTHER PURPOSES OVER OUR SIGNATURE OR IN CONNECTION WITH OUR NAME WITHOUT SPECIAL WRITTEN PERMISSION. SAMPLES NOT DESTROYED IN TESTING ARE RETAINED A MAXIMUM OF THIRTY DAYS.

CREDITED BY THE NATIONAL INSTITUTE OF STANDARDS AND TECHNOLOGY, VOLUNTARY LABORATORY ACCREDITATION PROGRAM FOR SELECTED TEST METHOD FOR ASBESTOS. THE ACCREDITATION OR ANY REPORTS GENERATED BY THIS LABORATORY IN NO WAY CONSTITUTES OR IMPLIES PRODUCT CERTIFICATION, APPROVAL, OR ENDORSEMENT BY THE NATIONAL INSTITUTE OF STANDARDS AND TECHNOLOGY. ALL ANALYSES ARE DERIVED FROM CALIBRATED VISUAL ESTIMATE UNLESS OTHERWISE NOTED. POLARIZED-LIGHT IS NOT CONSISTENTLY RELIABLE IN DETECTING ASBESTOS IN FLOOR COVERINGS AND SIMILAR NON-FRIABLE ORGANICALLY BOUND MATERIALS. QUANTITATIVE TRANSMISSION ELECTRON MICROSCOPY IS CURRENTLY THE ONLY METHOD THAT CAN BE USED TO DETERMINE IF THIS MATERIAL CAN BE CONSIDERED OR TREATED AS NON-ASBESTOS-CONTAINING.

Analyst: Octavio Gavarreteayestas

By: Kurt Kettler

IVLAP Accreditation #1926, CA ELAP #1913, TX DOH #30-0094

342 EAST THOMAS ROAD SCOTTSDALE, ARIZONA 85251-7216 (602) 990-2069 FAX: (602) 990-8468

15/99 ENVIRONMENTAL MANAGEMENT CONSULTANTS

Page 4 of 9

BULK MATERIAL REPORT

REPORT Laboratory Analysis: BULK MATERIAL

Client: ADVANCED TECHNOLOGIES CORP.

Reported to: MICHAEL LLEWELLYN

Sampled from: RATH ADMINISTRATIVE BLDG

Shipped via: FEDERAL EXPRESS

LAB: 54278

Methodology: EPA 600/M4-82-020

P/O#:

Proj: H11720

By: Client

Received: 2/12/99

Reported: 2/15/99

SAMPLE	IDENTIFICATION	PARAMETER	TEST RESULTS
10A	48-18 sheetrock white, tan BSMT W. RM	Asbestos	None detected. This sample contains approx. 10% Cellulose, 90% Quartz, CaCO, CaSO, Mica
10B	48-18 joint compound off white, green BSMT W. RM	Asbestos	Positive. This sample contains approx. 2% Chrysotile, 98% Quartz, CaCO, Mica, Binder
11A	48-19 9"x9" floor tile white, brown BSMT S. AC RM	Asbestos	Positive. This sample contains approx. 15% Chrysotile, 85% Quartz, Binder
11B	48-19 mastic, 1st layer black BSMT S. AC RM	Asbestos	Positive. This sample contains approx. 2% Chrysotile, trace Cellulose, 97% Quartz, Binder
11C	48-19 mastic, 2nd layer brown BSMT S. AC RM	Asbestos	None detected. This sample contains approx. 100% Quartz, CaCO, Binder

THIS REPORT APPLIES TO THE STANDARDS OR PROCEDURES IDENTIFIED AND TO THE SAMPLE(S) TESTED. THE TEST RESULTS ARE NOT NECESSARILY INDICATIVE OR REPRESENTATIVE OF THE QUALITIES OF THE LOT FROM WHICH THE SAMPLE WAS TAKEN OR OF APPARENTLY IDENTICAL OR SIMILAR PRODUCTS, NOR DO THEY REPRESENT AN ONGOING QUALITY ASSURANCE PROGRAM UNLESS SO NOTED. THESE REPORTS ARE FOR THE EXCLUSIVE USE OF THE ADDRESSED CLIENT AND ARE RENDERED UPON THE CONDITION THAT THEY WILL NOT BE REPRODUCED WHOLLY OR IN PART FOR ADVERTISING OR OTHER PURPOSES OVER OUR SIGNATURE OR IN CONNECTION WITH OUR NAME WITHOUT SPECIAL WRITTEN PERMISSION. SAMPLES NOT DESTROYED IN TESTING ARE RETAINED A MAXIMUM OF THIRTY DAYS.

ACCREDITED BY THE NATIONAL INSTITUTE OF STANDARDS, TECHNOLOGY, VOLUNTARY LABORATORY ACCREDITATION PROGRAM FOR SELECTED TEST METHOD FOR ASBESTOS. THE ACCREDITATION OR ANY REPORTS GENERATED BY THIS LABORATORY IN NO WAY CONSTITUTES OR IMPLIES PRODUCT CERTIFICATION, APPROVAL, OR ENDORSEMENT BY THE NATIONAL INSTITUTE OF STANDARDS AND TECHNOLOGY. ALL ANALYSES ARE DERIVED FROM CALIBRATED VISUAL ESTIMATE UNLESS OTHERWISE NOTED. POLARIZED-LIGHT IS NOT CONSISTENTLY RELIABLE IN DETECTING ASBESTOS IN FLOOR COVERINGS AND SIMILAR NON-FRIABLE ORGANICALLY BOUND MATERIALS. QUANTITATIVE TRANSMISSION ELECTRON MICROSCOPY IS CURRENTLY THE ONLY METHOD THAT CAN BE USED TO DETERMINE IF THIS MATERIAL CAN BE CONSIDERED OR TREATED AS NON-ASBESTOS-CONTAINING.

Analyst: Octavio Gavarretsayestas

By: Kurt Kettler

NVLAP Accreditation #1926, CA ELAP #1913, TX DOH #30-0094

342 EAST THOMAS ROAD SCOTTSDALE, ARIZONA 85251-7216 (602) 990-2069 FAX: (602) 990-8468

2/15/99

ENVIRONMENTAL MANAGEMENT CONSULTANTS

Page 5 of 9

BULK MATERIAL REPORT

REPORT Laboratory Analysis: BULK MATERIAL

Client: ADVANCED TECHNOLOGIES CORP.

Reported to: MICHAEL LLEWELLYN

Sampled from: RATH ADMINISTRATIVE BLDG

Shipped via: FEDERAL EXPRESS

LAB: 54278

Methodology: EPA 600/M4-82-020

P/O#:

Proj: H11720

By: Client

Received: 2/12/99

Reported: 2/15/99

AMPLE	IDENTIFICATION	PARAMETER	TEST RESULTS
12	48-20 cardboard, pipe insulation tan, black BSMT S. AC RM	Asbestos	Positive. This sample contains approx. 3% Chrysotile, 90% Cellulose, 7% Quartz, CaCO ₃ , Binder
13	48-21 tank insulation white, off white BSMT TANK RM BY S. AC	Asbestos	Positive. This sample contains approx. 25% Chrysotile, 5% Amosite, 70% Quartz, CaCO ₃ , CaSO ₄
14A	48-22 cork, ceiling, 1st layer black TUNNEL GOING SOUTH	Asbestos	Positive. This sample contains approx. 5% Chrysotile, 1% Cellulose, trace Fiberglass, 93% Quartz, Binder
14B	48-22 cork, ceiling, 2nd layer dk. brown TUNNEL GOING SOUTH	Asbestos	None detected. This sample contains approx. 2% Cellulose, 98% Quartz, Binder, Cork
15A	48-23 9"x9" floor tile brown BSMT PURCHASING DEPT	Asbestos	Positive. This sample contains approx. 15% Chrysotile, 85% Quartz, Binder

THIS REPORT APPLIES TO THE STANDARDS OR PROCEDURES IDENTIFIED AND TO THE SAMPLE(S) TESTED. THE TEST RESULTS ARE NOT NECESSARILY INDICATIVE OR REPRESENTATIVE OF THE QUALITIES OF THE LOT FROM WHICH THE SAMPLE WAS TAKEN OR OF APPARENTLY IDENTICAL OR SIMILAR PRODUCTS, NOR DO THEY REPRESENT AN ONGOING QUALITY ASSURANCE PROGRAM UNLESS SO NOTED. THESE REPORTS ARE FOR THE EXCLUSIVE USE OF THE ADDRESSED CLIENT AND ARE RENDERED UPON THE CONDITION THAT THEY WILL NOT BE REPRODUCED WHOLLY OR IN PART FOR ADVERTISING OR OTHER PURPOSES OVER OUR SIGNATURE OR IN CONNECTION WITH OUR NAME WITHOUT SPECIAL WRITTEN PERMISSION. SAMPLES NOT DESTROYED IN TESTING ARE RETAINED A MAXIMUM OF THIRTY DAYS.

CREDITED BY THE NATIONAL INSTITUTE OF STANDARDS TECHNOLOGY, VOLUNTARY LABORATORY ACCREDITATION PROGRAM FOR SELECTED TEST METHOD FOR ASBESTOS. THE ACCREDITATION OR ANY REPORTS GENERATED BY THIS LABORATORY IN NO WAY CONSTITUTES OR IMPLIES PRODUCT CERTIFICATION, APPROVAL, OR ENDORSEMENT BY THE NATIONAL INSTITUTE OF STANDARDS AND TECHNOLOGY. ALL ANALYSES ARE DERIVED FROM CALIBRATED VISUAL ESTIMATE UNLESS OTHERWISE NOTED. POLARIZED-LIGHT IS NOT CONSISTENTLY RELIABLE IN DETECTING ASBESTOS IN FLOOR COVERINGS AND SIMILAR NON-FRIABLE ORGANICALLY BOUND MATERIALS. QUANTITATIVE TRANSMISSION ELECTRON MICROSCOPY IS CURRENTLY THE ONLY METHOD THAT CAN BE USED TO DETERMINE IF THIS MATERIAL CAN BE CONSIDERED OR TREATED AS NON-ASBESTOS-CONTAINING.



Analyst: Octavio Gavarreteayestas



By: Kurt Kettler

VLAP Accreditation #1926, CA ELAP #1913, TX DOH #30-0094

342 EAST THOMAS ROAD SCOTTSDALE, ARIZONA 85251-7216 (602) 990-2069 FAX: (602) 990-8468

2/15/99

ENVIRONMENTAL MANAGEMENT CONSULTANTS

Page 6 of 9

BULK MATERIAL REPORT

REPORT Laboratory Analysis: BULK MATERIAL

Client: ADVANCED TECHNOLOGIES CORP.

Reported to: MICHAEL LLEWELLYN

Sampled from: RATH ADMINISTRATIVE BLDG

Shipped via: FEDERAL EXPRESS

LAB: 54278

Methodology: EPA 800/M4-82-020

P/O#:

Proj: H11720

By: Client

Received: 2/12/99

Reported: 2/15/99

AMPLE	IDENTIFICATION	PARAMETER	TEST RESULTS
15B	48-23 mastic black BSMT PURCHASING DEPT	Asbestos	None detected. This sample contains approx. trace Cellulose, 99% Quartz, CaCO, CaSO, Binder
16A	48-24 cardboard, pipe insulation, 1st layer beige, gray BSMT VERNER RM	Asbestos	None detected. This sample contains approx. 70% Cellulose, 20% Synthetics, 10% Quartz, Binder
16B	48-24 cardboard, pipe insulation, 2nd layer black BSMT VERNER RM	Asbestos	None detected. This sample contains approx. 50% Cellulose, 5% Synthetics, 45% Quartz, Binder
17	48-25 transite, ceiling gray, white BSMT PURCHASING DEPT	Asbestos	Positive. This sample contains approx. 20% Chrysotile, 80% Quartz, CaCO, Binder
18A	48-26 12"x12" floor tile black BSMT HOME ECONOMICS	Asbestos	Positive. This sample contains approx. 10% Chrysotile, 90% Quartz, Binder

THE REPORT APPLIES TO THE STANDARDS OR PROCEDURES IDENTIFIED AND TO THE SAMPLE(S) TESTED. THE TEST RESULTS ARE NOT NECESSARILY INDICATIVE OR REPRESENTATIVE OF THE QUALITIES OF THE LOT FROM WHICH THE SAMPLE WAS TAKEN OR OF APPARENTLY IDENTICAL OR SIMILAR PRODUCTS, NOR DO THEY REPRESENT AN ONGOING QUALITY ASSURANCE PROGRAM UNLESS SO NOTED. THESE REPORTS ARE FOR THE EXCLUSIVE USE OF THE ADDRESSED CLIENT AND ARE RENDERED UPON THE CONDITION THAT THEY WILL NOT BE REPRODUCED WHOLLY OR IN PART FOR ADVERTISING OR OTHER PURPOSES OVER OUR SIGNATURE OR IN CONNECTION WITH OUR NAME WITHOUT SPECIAL WRITTEN PERMISSION. SAMPLES NOT DESTROYED IN TESTING ARE RETAINED A MAXIMUM OF THIRTY DAYS.

ACCREDITED BY THE NATIONAL INSTITUTE OF STANDARDS AND TECHNOLOGY, VOLUNTARY LABORATORY ACCREDITATION PROGRAM FOR SELECTED TEST METHOD FOR ASBESTOS. THE ACCREDITATION OR ANY REPORTS GENERATED BY THIS LABORATORY IN NO WAY CONSTITUTES OR IMPLIES PRODUCT CERTIFICATION, APPROVAL, OR ENDORSEMENT BY THE NATIONAL INSTITUTE OF STANDARDS AND TECHNOLOGY. ALL ANALYSES ARE DERIVED FROM CALIBRATED VISUAL ESTIMATE UNLESS OTHERWISE NOTED. POLARIZED-LIGHT IS NOT CONSISTENTLY RELIABLE IN DETECTING ASBESTOS IN FLOOR COVERINGS AND SIMILAR NON-FRIABLE ORGANICALLY BOUND MATERIALS. QUANTITATIVE TRANSMISSION ELECTRON MICROSCOPY IS CURRENTLY THE ONLY METHOD THAT CAN BE USED TO DETERMINE IF THIS MATERIAL CAN BE CONSIDERED OR TREATED AS NON-ASBESTOS-CONTAINING.

Analyst: Octavio Gavarreteayestas

By: Kurt Kettler

NVLAP Accreditation #1926, CA ELAP #1913, TX DOH #30-0094

7342 EAST THOMAS ROAD SCOTTSDALE, ARIZONA 85251-7216 (602) 990-2069 FAX: (602) 990-8468

2/15/99

ENVIRONMENTAL MANAGEMENT CONSULTANTS

Page 7 of 9

BULK MATERIAL REPORT

REPORT Laboratory Analysis: BULK MATERIAL

Client: ADVANCED TECHNOLOGIES CORP.

Reported to: MICHAEL LLEWELLYN

Sampled from: RATH ADMINISTRATIVE BLDG

Shipped via: FEDERAL EXPRESS

LAB: 54278

Methodology: EPA 600/M4-82-020

P/O#:

Proj: H11720

By: Client

Received: 2/12/99

Reported: 2/15/99

AMPLE	IDENTIFICATION	PARAMETER	TEST RESULTS
18B	48-26 mastic black BSMT HOME ECONOMICS	Asbestos	Positive. This sample contains approx. 2% Chrysotile, trace Cellulose, 97% Quartz, CaCO ₃ , CaSO ₄ , Binder
19A	48-27 9"x9" floor tile red, white, brown BSMT SAMPLE RM	Asbestos	Positive. This sample contains approx. 2% Chrysotile, 2% Cellulose, 96% Quartz, CaCO ₃ , Binder
19B	48-27 mastic black BSMT SAMPLE RM	Asbestos	Positive. This sample contains approx. 2% Chrysotile, 1% Cellulose, 97% Quartz, CaCO ₃ , Binder
20A	48-28 cork, ceiling, 1st layer black, white BSMT SAMPLE RM	Asbestos	Positive. This sample contains approx. 5% Chrysotile, trace Cellulose, 94% Quartz, Binder
20B	48-28 cork, ceiling, 2nd layer dk. brown BSMT SAMPLE RM	Asbestos	None detected. This sample contains approx. 3% Cellulose, 97% Quartz, CaCO ₃ , Binder

THIS REPORT APPLIES TO THE STANDARDS OR PROCEDURES IDENTIFIED AND TO THE SAMPLE(S) TESTED. THE TEST RESULTS ARE NOT NECESSARILY INDICATIVE OR REPRESENTATIVE OF THE QUALITIES OF THE LOT FROM WHICH THE SAMPLE WAS TAKEN OR OF APPARENTLY IDENTICAL OR SIMILAR PRODUCTS. NOR DO THEY REPRESENT AN ONGOING QUALITY ASSURANCE PROGRAM UNLESS SO NOTED. THESE REPORTS ARE FOR THE EXCLUSIVE USE OF THE ADDRESSED CLIENT AND ARE RENDERED UPON THE CONDITION THAT THEY WILL NOT BE REPRODUCED WHOLLY OR IN PART FOR ADVERTISING OR OTHER PURPOSES OVER OUR SIGNATURE OR IN CONNECTION WITH OUR NAME WITHOUT SPECIAL WRITTEN PERMISSION. SAMPLES NOT DESTROYED IN TESTING ARE RETAINED A MAXIMUM OF THIRTY DAYS.

ACCREDITED BY THE NATIONAL INSTITUTE OF STANDARDS AND TECHNOLOGY, VOLUNTARY LABORATORY ACCREDITATION PROGRAM FOR SELECTED TEST METHOD FOR ASBESTOS. THE ACCREDITATION OR ANY REPORTS GENERATED BY THIS LABORATORY IN NO WAY CONSTITUTES OR IMPLIES PRODUCT CERTIFICATION, APPROVAL, OR ENDORSEMENT BY THE NATIONAL INSTITUTE OF STANDARDS AND TECHNOLOGY. ALL ANALYSES ARE DERIVED FROM CALIBRATED VISUAL ESTIMATE UNLESS OTHERWISE NOTED. POLARIZED-LIGHT IS NOT CONSISTENTLY RELIABLE IN DETECTING ASBESTOS IN FLOOR COVERINGS AND SIMILAR NON-FRIABLE ORGANICALLY BOUND MATERIALS. QUANTITATIVE TRANSMISSION ELECTRON MICROSCOPY IS CURRENTLY THE ONLY METHOD THAT CAN BE USED TO DETERMINE IF THIS MATERIAL CAN BE CONSIDERED OR TREATED AS NON-ASBESTOS-CONTAINING.

Analyst: Octavio Gavarreteayestas

By: Kurt Kettler

VLAP Accreditation #1926, CA ELAP #1913, TX DOH #30-0094

7342 EAST THOMAS ROAD SCOTTSDALE, ARIZONA 85251-7216 (602) 990-2069 FAX: (602) 990-8468

15/99 ENVIRONMENTAL MANAGEMENT CONSULTANTS
BULK MATERIAL REPORT

Page 8 of 9

REPORT Laboratory Analysis: BULK MATERIAL

Client: ADVANCED TECHNOLOGIES CORP.

Reported to: MICHAEL LLEWELLYN

Sampled from: RATH ADMINISTRATIVE BLDG

Shipped via: FEDERAL EXPRESS

LAB: 54278

Methodology: EPA 600/M4-82-020

P/O#:

Proj: H11720

By: Client

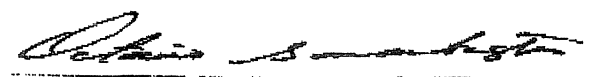
Received: 2/12/99

Reported: 2/15/99

SAMPLE	IDENTIFICATION	PARAMETER	TEST RESULTS
21A	48-29 spray-on, ceiling white, off white BSMT HOME EC DINING RM	Asbestos	Positive. This sample contains approx. 3% Chrysotile, trace Cellulose, 96% Perlite, Quartz, CaCO ₃ , CaSO ₄ , Mica, Binder
21B	48-29 ceiling plaster white, brown, black BSMT HOME EC DINING RM	Asbestos	None detected. This sample contains approx. trace Cellulose, 99% Quartz, CaCO ₃ , CaSO ₄ , Mica, Binder
22A	48-30 12"x12" floor tile red, brown BSMT CAFETERIA	Asbestos	Positive. This sample contains approx. 10% Chrysotile, 90% Quartz, Binder
22B	48-30 mastic black BSMT CAFETERIA	Asbestos	Positive. This sample contains approx. 2% Chrysotile, 98% Quartz, CaCO ₃ , Binder
23A	48-31 12"x12" floor tile black, brown BSMT CAFATERIA	Asbestos	Positive. This sample contains approx. 10% Chrysotile, 90% Quartz, Binder

THE REPORT APPLIES TO THE STANDARDS OR PROCEDURES IDENTIFIED AND TO THE SAMPLE(S) TESTED. THE TEST RESULTS ARE NOT NECESSARILY INDICATIVE OR REPRESENTATIVE OF THE QUALITIES OF THE LOT FROM WHICH THE SAMPLE WAS TAKEN OR OF APPARENTLY IDENTICAL OR SIMILAR PRODUCTS, NOR DO THEY REPRESENT AN ONGOING QUALITY ASSURANCE PROGRAM UNLESS SO NOTED. THESE REPORTS ARE FOR THE EXCLUSIVE USE OF THE ADDRESSED CLIENT AND ARE RENDERED UPON THE CONDITION THAT THEY WILL NOT BE REPRODUCED WHOLLY OR IN PART FOR ADVERTISING OR OTHER PURPOSES OVER OUR SIGNATURE OR IN CONNECTION WITH OUR NAME WITHOUT SPECIAL WRITTEN PERMISSION. SAMPLES NOT DESTROYED IN TESTING ARE RETAINED A MAXIMUM OF THIRTY DAYS.

ACCREDITED BY THE NATIONAL INSTITUTE OF STANDARDS TECHNOLOGY, VOLUNTARY LABORATORY ACCREDITATION PROGRAM FOR SELECTED TEST METHOD FOR ASBESTOS. THE ACCREDITATION OR ANY REPORTS GENERATED BY THIS LABORATORY IN NO WAY CONSTITUTES OR IMPLIES PRODUCT CERTIFICATION, APPROVAL, OR ENDORSEMENT BY THE NATIONAL INSTITUTE OF STANDARDS AND TECHNOLOGY. ALL ANALYSES ARE DERIVED FROM CALIBRATED VISUAL ESTIMATE UNLESS OTHERWISE NOTED. POLARIZED-LIGHT IS NOT CONSISTENTLY RELIABLE IN DETECTING ASBESTOS IN FLOOR COVERINGS AND SIMILAR NON-FRIABLE ORGANICALLY BOUND MATERIALS. QUANTITATIVE TRANSMISSION ELECTRON MICROSCOPY IS CURRENTLY THE ONLY METHOD THAT CAN BE USED TO DETERMINE IF THIS MATERIAL CAN BE CONSIDERED OR TREATED AS NON-ASBESTOS-CONTAINING.



Analyst: Octavio Gavarreteayestas



By: Kurt Kettler

NVLAP Accreditation #1926, CA ELAP #1913, TX DOH #30-0094

342 EAST THOMAS ROAD SCOTTSDALE, ARIZONA 85251-7216 (602) 990-2069 FAX: (602) 990-8468

15/99

ENVIRONMENTAL MANAGEMENT CONSULTANTS

Page 9 of 9

BULK MATERIAL REPORT

REPORT Laboratory Analysis: BULK MATERIAL

Client: ADVANCED TECHNOLOGIES CORP.

Reported to: MICHAEL LLEWELLYN

Sampled from: RATH ADMINISTRATIVE BLDG

Shipped via: FEDERAL EXPRESS

LAB: 54278

Methodology: EPA 600/M4-82-020

P/O#:

Proj: H11720

By: Client

Received: 2/12/99

Reported: 2/15/99

SAMPLE	IDENTIFICATION	PARAMETER	TEST RESULTS
23B	48-31 mastic black BSMT CAFATERIA	Asbestos	Positive. This sample contains approx. 2% Chrysotile, 98% Quartz, Binder
24	48-33 tank insulation white BSMT KITCHEN	Asbestos	Positive. This sample contains approx. 20% Chrysotile, 10% Amosite, 70% Quartz, CaCO ₃ , CaSO ₄
25	48-34 exterior, wall, plaster gray, brown, black, off white BSMT KITCHEN FREEZER'S	Asbestos	None detected. This sample contains approx. 100% Quartz, CaCO ₃ , Mica, Binder
26A	48-35 interior, wall, cork dk. brown BSMT KITCHEN FREEZER'S	Asbestos	None detected. This sample contains approx. 1% Cellulose, 99% Quartz, CaCO ₃ , Binder
26B	48-35 interior, wall, sealant black BSMT KITCHEN FREEZER'S	Asbestos	None detected. This sample contains approx. 1% Cellulose, 99% Quartz, CaCO ₃ , CaSO ₄ , Binder

THIS REPORT APPLIES TO THE STANDARDS OR PROCEDURES IDENTIFIED AND TO THE SAMPLE(S) TESTED. THE TEST RESULTS ARE NOT NECESSARILY INDICATIVE OR REPRESENTATIVE OF THE QUALITIES OF THE LOT FROM WHICH THE SAMPLE WAS TAKEN OR OF APPARENTLY IDENTICAL OR SIMILAR PRODUCTS, NOR DO THEY REPRESENT AN ONGOING QUALITY ASSURANCE PROGRAM UNLESS SO NOTED. THESE REPORTS ARE FOR THE EXCLUSIVE USE OF THE ADDRESSED CLIENT AND ARE RENDERED UPON THE CONDITION THAT THEY WILL NOT BE REPRODUCED WHOLLY OR IN PART FOR ADVERTISING OR OTHER PURPOSES OVER OUR SIGNATURE OR IN CONNECTION WITH OUR NAME WITHOUT SPECIAL WRITTEN PERMISSION. SAMPLES NOT DESTROYED IN TESTING ARE RETAINED A MAXIMUM OF THIRTY DAYS.

CREDITED BY THE NATIONAL INSTITUTE OF STANDARDS TECHNOLOGY, VOLUNTARY LABORATORY ACCREDITATION PROGRAM FOR SELECTED TEST METHOD FOR ASBESTOS. THE ACCREDITATION OR ANY REPORTS GENERATED BY THIS LABORATORY IN NO WAY CONSTITUTES OR IMPLIES PRODUCT CERTIFICATION, APPROVAL, OR ENDORSEMENT BY THE NATIONAL INSTITUTE OF STANDARDS AND TECHNOLOGY. ALL ANALYSES ARE DERIVED FROM CALIBRATED VISUAL ESTIMATE UNLESS OTHERWISE NOTED. POLARIZED-LIGHT IS NOT CONSISTENTLY RELIABLE IN DETECTING ASBESTOS IN FLOOR COVERINGS AND SIMILAR NON-FRIABLE ORGANICALLY BOUND MATERIALS. QUANTITATIVE TRANSMISSION ELECTRON MICROSCOPY IS CURRENTLY THE ONLY METHOD THAT CAN BE USED TO DETERMINE IF THIS MATERIAL CAN BE CONSIDERED OR TREATED AS NON-ASBESTOS-CONTAINING.

Analyst: Octavio Gavarreteayestas

By: Kurt Kettler

NVLAP Accreditation #1926, CA ELAP #1913, TX DOH #30-0094

7342 EAST THOMAS ROAD SCOTTSDALE, ARIZONA 85251-7215 (602) 990-2069 FAX: (602) 990-8468

2/15/99

ENVIRONMENTAL MANAGEMENT CONSULTANTS

Page 1 of 6

BULK MATERIAL REPORT

REPORT Laboratory Analysis: BULK MATERIAL

Client: ADVANCED TECHNOLOGIES CORP.

Reported to: MICHAEL LLEWELLYN

Sampled from: RATH ADMINISTRATIVE BLDG

Shipped via: FEDERAL EXPRESS

LAB: 54277

Methodology: EPA 600/M4-82-020

P/O#: 2ND FLOOR

Proj: H11720

By: Client

Received: 2/12/99

Reported: 2/15/99

AMPLE	IDENTIFICATION	PARAMETER	TEST RESULTS
01A	48-36 9"x9" floor tile red, white WOMAN'S RR	Asbestos	Positive. This sample contains approx. 10% Chrysotile, trace Cellulose, 89% Quartz, CaCO , Mica, Binder
01B	48-36 mastic black WOMAN'S RR	Asbestos	None detected. This sample contains approx. 100% Quartz, CaCO, Mica, Binder
02A	48-37 plaster white, beige WOMAN'S RR	Asbestos	None detected. This sample contains approx. trace Cellulose, 99% Quartz, CaCO, CaSO, Mica, Binder
02B	48-37 skim coat brown, black WOMAN'S RR	Asbestos	None detected. This sample contains approx. 100% Quartz, CaCO, CaSO, Mica, Binder
03	48-38 vibration, cloth white, dk. brown WEST END	Asbestos	None detected. This sample contains approx. 90% Cellulose, 10% Quartz, CaCO, Binder

THE REPORT APPLIES TO THE STANDARDS OR PROCEDURES IDENTIFIED AND TO THE SAMPLE(S) TESTED. THE TEST RESULTS ARE NOT NECESSARILY INDICATIVE OR REPRESENTATIVE OF THE QUALITIES OF THE LOT FROM WHICH THE SAMPLE WAS TAKEN OR OF APPARENTLY IDENTICAL OR SIMILAR PRODUCTS, NOR DO THEY REPRESENT AN ONGOING QUALITY ASSURANCE PROGRAM UNLESS SO NOTED. THESE REPORTS ARE FOR THE EXCLUSIVE USE OF THE ADDRESSED CLIENT AND ARE RENDERED UPON THE CONDITION THAT THEY WILL NOT BE REPRODUCED WHOLLY OR IN PART FOR ADVERTISING OR OTHER PURPOSES OVER OUR SIGNATURE OR IN CONNECTION WITH OUR NAME WITHOUT SPECIAL WRITTEN PERMISSION. SAMPLES NOT DESTROYED IN TESTING ARE RETAINED A MAXIMUM OF THIRTY DAYS.

ACCREDITED BY THE NATIONAL INSTITUTE OF STANDARDS TECHNOLOGY, VOLUNTARY LABORATORY ACCREDITATION PROGRAM FOR SELECTED TEST METHOD FOR ASBESTOS. THE ACCREDITATION OR ANY REPORTS GENERATED BY THIS LABORATORY IN NO WAY CONSTITUTES OR IMPLIES PRODUCT CERTIFICATION, APPROVAL, OR ENDORSEMENT BY THE NATIONAL INSTITUTE OF STANDARDS AND TECHNOLOGY. ALL ANALYSES ARE DERIVED FROM CALIBRATED VISUAL ESTIMATE UNLESS OTHERWISE NOTED. POLARIZED-LIGHT IS NOT CONSISTENTLY RELIABLE IN DETECTING ASBESTOS IN FLOOR COVERINGS AND SIMILAR NON-FRIABLE ORGANICALLY BOUND MATERIALS. QUANTITATIVE TRANSMISSION ELECTRON MICROSCOPY IS CURRENTLY THE ONLY METHOD THAT CAN BE USED TO DETERMINE IF THIS MATERIAL CAN BE CONSIDERED OR TREATED AS NON-ASBESTOS-CONTAINING.

Analyst: Jason W. Sutter

By: Kurt Kettler

NVLAP Accreditation #1926, CA ELAP #1913, TX DOH #30-0094

342 EAST THOMAS ROAD SCOTTSDALE, ARIZONA 85251-7216 (602) 990-2069 FAX: (602) 990-8468

2/15/99

ENVIRONMENTAL MANAGEMENT CONSULTANTS

Page 2 of 6

BULK MATERIAL REPORT

REPORT Laboratory Analysis: BULK MATERIAL

Client: ADVANCED TECHNOLOGIES CORP.

Reported to: MICHAEL LLEWELLYN

Sampled from: RATH ADMINISTRATIVE BLDG

Shipped via: FEDERAL EXPRESS

LAB: 54277

Methodology: EPA 600/M4-82-020

P/O#: 2ND FLOOR

Proj: H11720

By: Client

Received: 2/12/99

Reported: 2/15/99

SAMPLE	IDENTIFICATION	PARAMETER	TEST RESULTS
04A	48-39 9"x9" floor tile red WEST END	Asbestos	Positive. This sample contains approx. 15% Chrysotile, 85% Quartz, CaCO ₃ , Mica, Binder
04B	48-39 mastic black WEST END	Asbestos	Positive. This sample contains approx. 2% Chrysotile, trace Fiberglass, 97% Quartz, CaCO ₃ , Mica, Binder
05A	48-40 9"x9" floor tile black, white	Asbestos	Positive. This sample contains approx. 10% Chrysotile, 90% Quartz, CaCO ₃ , Mica, Binder
05B	48-40 mastic black	Asbestos	None detected. This sample contains approx. 100% Quartz, CaCO ₃ , Mica, Binder
06	48-41 drywall beige, tan	Asbestos	None detected. This sample contains approx. 10% Cellulose, 90% Quartz, CaCO ₃ , CaSO ₄ , Mica, Binder

THIS REPORT APPLIES TO THE STANDARDS OR PROCEDURES IDENTIFIED AND TO THE SAMPLE(S) TESTED. THE TEST RESULTS ARE NOT NECESSARILY INDICATIVE OR REPRESENTATIVE OF THE QUALITIES OF THE LOT FROM WHICH THE SAMPLE WAS TAKEN OR OF APPARENTLY IDENTICAL OR SIMILAR PRODUCTS, NOR DO THEY REPRESENT AN ONGOING QUALITY ASSURANCE PROGRAM UNLESS SO NOTED. THESE REPORTS ARE FOR THE EXCLUSIVE USE OF THE ADDRESSED CLIENT AND ARE RENDERED UPON THE CONDITION THAT THEY WILL NOT BE REPRODUCED WHOLLY OR IN PART FOR ADVERTISING OR OTHER PURPOSES OVER OUR SIGNATURE OR IN CONNECTION WITH OUR NAME WITHOUT SPECIAL WRITTEN PERMISSION. SAMPLES NOT DESTROYED IN TESTING ARE RETAINED A MAXIMUM OF THIRTY DAYS.

ACCREDITED BY THE NATIONAL INSTITUTE OF STANDARDS AND TECHNOLOGY, VOLUNTARY LABORATORY ACCREDITATION PROGRAM FOR SELECTED TEST METHOD FOR ASBESTOS. THE ACCREDITATION OR ANY REPORTS GENERATED BY THIS LABORATORY IN NO WAY CONSTITUTES OR IMPLIES PRODUCT CERTIFICATION, APPROVAL, OR ENDORSEMENT BY THE NATIONAL INSTITUTE OF STANDARDS AND TECHNOLOGY. ALL ANALYSES ARE DERIVED FROM CALIBRATED VISUAL ESTIMATE UNLESS OTHERWISE NOTED. POLARIZED-LIGHT IS NOT CONSISTENTLY RELIABLE IN DETECTING ASBESTOS IN FLOOR COVERINGS AND SIMILAR NON-FRIABLE ORGANICALLY BOUND MATERIALS. QUANTITATIVE TRANSMISSION ELECTRON MICROSCOPY IS CURRENTLY THE ONLY METHOD THAT CAN BE USED TO DETERMINE IF THIS MATERIAL CAN BE CONSIDERED OR TREATED AS NON-ASBESTOS-CONTAINING.

Analyst: Jason W. Sutter

By: Kurt Kettler

SVLAP Accreditation #1926, CA ELAP #1913, TX DOH #30-0094

342 EAST THOMAS ROAD SCOTTSDALE, ARIZONA 85251-7216 (602) 990-2069 FAX: (602) 990-8468

17/99

ENVIRONMENTAL MANAGEMENT CONSULTANTS
BULK MATERIAL REPORT

Page 3 of 8

REPORT Laboratory Analysis: BULK MATERIAL**Client:** ADVANCED TECHNOLOGIES CORP.**Reported to:** MICHAEL LLEWELLYN**Sampled from:** RATH ADMIN BLDG-ROOFS & EXT**Shipped via:** FEDERAL EXPRESS**LAB:** 54356**Methodology:** EPA 600/M4-82-020**P/O#:****Proj:** H11720**By:** Client**Received:** 2/16/99**Reported:** 2/17/99

SAMPLE	IDENTIFICATION	PARAMETER	TEST RESULTS
04B	48-54 roofing felt, 2nd layer black ORIGINAL BLDG-S. SIDE	Asbestos	None detected. This sample contains approx. trace Cellulose, 20% Fiberglass, 79% Binder
04C	48-54 roofing felt, 3rd layer black ORIGINAL BLDG-S. SIDE	Asbestos	None detected. This sample contains approx. 5% Cellulose, 5% Fiberglass, 90% CaCO ₃ , Binder
05A	48-55 roof flashing, 1st layer black ORIGINAL BLDG-N EDGE	Asbestos	None detected. This sample contains approx. 10% Fiberglass, 90% Quartz, CaCO ₃ , Mica, Binder
05B	48-55 roof flashing, 2nd layer black ORIGINAL BLDG-N EDGE	Asbestos	None detected. This sample contains approx. trace Cellulose, 5% Fiberglass, 94% Quartz, CaCO ₃ , Binder
05C	48-55 roof flashing black ORIGINAL BLDG-N EDGE	Asbestos	None detected. This sample contains approx. trace Cellulose, 20% Fiberglass, 79% Quartz, CaCO ₃ , Binder

THE REPORT APPLIES TO THE STANDARDS OR PROCEDURES IDENTIFIED AND TO THE SAMPLE(S) TESTED. THE TEST RESULTS ARE NOT NECESSARILY INDICATIVE OR REPRESENTATIVE OF THE QUALITIES OF THE LOT FROM WHICH THE SAMPLE WAS TAKEN OR OF APPARENTLY IDENTICAL OR SIMILAR PRODUCTS, NOR DO THEY REPRESENT AN ONGOING QUALITY ASSURANCE PROGRAM UNLESS SO NOTED. THESE REPORTS ARE FOR THE EXCLUSIVE USE OF THE ADDRESSED CLIENT AND ARE RENDERED UPON THE CONDITION THAT THEY WILL NOT BE REPRODUCED WHOLLY OR IN PART FOR ADVERTISING OR OTHER PURPOSES OVER OUR SIGNATURE OR IN CONNECTION WITH OUR NAME WITHOUT SPECIAL WRITTEN PERMISSION. SAMPLES NOT DESTROYED IN TESTING ARE RETAINED A MAXIMUM OF THIRTY DAYS.

ACCREDITED BY THE NATIONAL INSTITUTE OF STANDARDS AND TECHNOLOGY, VOLUNTARY LABORATORY ACCREDITATION PROGRAM FOR SELECTED TEST METHOD FOR ASBESTOS. THE ACCREDITATION OR ANY REPORTS GENERATED BY THIS LABORATORY IN NO WAY CONSTITUTES OR IMPLIES PRODUCT CERTIFICATION, APPROVAL, OR ENDORSEMENT BY THE NATIONAL INSTITUTE OF STANDARDS AND TECHNOLOGY. ALL ANALYSES ARE DERIVED FROM CALIBRATED VISUAL ESTIMATE UNLESS OTHERWISE NOTED. POLARIZED-LIGHT IS NOT CONSISTENTLY RELIABLE IN DETECTING ASBESTOS IN FLOOR COVERINGS AND SIMILAR NON-FRIABLE ORGANICALLY BOUND MATERIALS. QUANTITATIVE TRANSMISSION ELECTRON MICROSCOPY IS CURRENTLY THE ONLY METHOD THAT CAN BE USED TO DETERMINE IF THIS MATERIAL CAN BE CONSIDERED OR TREATED AS NON-ASBESTOS-CONTAINING.

Analyst: Jason W. Sutter

By: Kurt Kettler

VLAP Accreditation #1926, CA ELAP #1913, TX DOH #30-0094

42 EAST THOMAS ROAD SCOTTSDALE, ARIZONA 85251-7216 (602) 990-2069 FAX: (602) 990-8468

17/99

ENVIRONMENTAL MANAGEMENT CONSULTANTS

Page 4 of 8

BULK MATERIAL REPORT

REPORT Laboratory Analysis: BULK MATERIAL

Client: ADVANCED TECHNOLOGIES CORP.

Reported to: MICHAEL LLEWELLYN

Sampled from: RATH ADMIN BLDG-ROOFS & EXT

Shipped via: FEDERAL EXPRESS

LAB: 54356

Methodology: EPA 600/M4-82-020

P/O#:

Proj: H11720

By: Client

Received: 2/16/99

Reported: 2/17/99

SAMPLE	IDENTIFICATION	PARAMETER	TEST RESULTS
06A	48-56 roofing felt, 1st layer black ORIGINAL BLDG-E. END	Asbestos	None detected. This sample contains approx. 40% Cellulose, 60% Quartz , CaCO , Mica , Binder
06B	48-56 roofing felt, 2nd layer black ORIGINAL BLDG-E. END	Asbestos	None detected. This sample contains approx. 40% Cellulose, 60% Quartz , CaCO , Binder
06C	48-56 roofing felt, 3rd layer black ORIGINAL BLDG-E. END	Asbestos	None detected. This sample contains approx. 40% Cellulose, 60% Quartz , CaCO , Binder
06D	48-56 roofing felt, 4th layer black ORIGINAL BLDG-E. END	Asbestos	None detected. This sample contains approx. 35% Cellulose, 5% Synthetics, 60% Quartz , CaCO , Binder
06E	48-56 roofing felt, 5th layer black ORIGINAL BLDG-E. END	Asbestos	None detected. This sample contains approx. 40% Cellulose, 60% Quartz , CaCO , Binder

THE REPORT APPLIES TO THE STANDARDS OR PROCEDURES IDENTIFIED AND TO THE SAMPLE(S) TESTED. THE TEST RESULTS ARE NOT NECESSARILY INDICATIVE OR REPRESENTATIVE OF THE QUALITIES OF THE LOT FROM WHICH THE SAMPLE WAS TAKEN OR OF APPARENTLY IDENTICAL OR SIMILAR PRODUCTS, NOR DO THEY REPRESENT AN ONGOING QUALITY ASSURANCE PROGRAM UNLESS SO NOTED. THESE REPORTS ARE FOR THE EXCLUSIVE USE OF THE ADDRESSED CLIENT AND ARE RENDERED UPON THE CONDITION THAT THEY WILL NOT BE REPRODUCED WHOLLY OR IN PART FOR ADVERTISING OR OTHER PURPOSES OVER OUR SIGNATURE OR IN CONNECTION WITH OUR NAME WITHOUT SPECIAL WRITTEN PERMISSION. SAMPLES NOT DESTROYED IN TESTING ARE RETAINED A MAXIMUM OF THIRTY DAYS.

ACCREDITED BY THE NATIONAL INSTITUTE OF STANDARDS AND TECHNOLOGY, VOLUNTARY LABORATORY ACCREDITATION PROGRAM FOR SELECTED TEST METHOD FOR ASBESTOS. THE ACCREDITATION OR ANY REPORTS GENERATED BY THIS LABORATORY IN NO WAY CONSTITUTES OR IMPLIES PRODUCT CERTIFICATION, APPROVAL, OR ENDORSEMENT BY THE NATIONAL INSTITUTE OF STANDARDS AND TECHNOLOGY. ALL ANALYSES ARE DERIVED FROM CALIBRATED VISUAL ESTIMATE UNLESS OTHERWISE NOTED. POLARIZED-LIGHT IS NOT CONSISTENTLY RELIABLE IN DETECTING ASBESTOS IN FLOOR COVERINGS AND SIMILAR NON-FRIABLE ORGANICALLY BOUND MATERIALS. QUANTITATIVE TRANSMISSION ELECTRON MICROSCOPY IS CURRENTLY THE ONLY METHOD THAT CAN BE USED TO DETERMINE IF THIS MATERIAL CAN BE CONSIDERED OR TREATED AS NON-ASBESTOS-CONTAINING.

Analyst: Jason W. Sutter

By: Kurt Kettler

VLAP Accreditation #1926, CA ELAP #1913, TX DOH #30-0094

142 EAST THOMAS ROAD SCOTTSDALE, ARIZONA 85251-7216 (602) 990-2069 FAX: (602) 990-8468

2/15/99

ENVIRONMENTAL MANAGEMENT CONSULTANTS
BULK MATERIAL REPORT

Page 5 of 6

REPORT Laboratory Analysis: BULK MATERIAL
Client: ADVANCED TECHNOLOGIES CORP.
Reported to: MICHAEL LLEWELLYN
Sampled from: RATH ADMINISTRATIVE BLDG
Shipped via: FEDERAL EXPRESS

LAB: 54277
Methodology: EPA 600/M4-82-020
P/O#: 2ND FLOOR
Proj: H11720
By: Client

Received: 2/12/99 Reported: 2/15/99

SAMPLE	IDENTIFICATION	PARAMETER	TEST RESULTS
12B	48-47 mastic, seam white ATTIC	Asbestos	Positive. This sample contains approx. 50% Chrysotile, 50% Quartz, CaCO ₃ , Mica, Binder
13A	48-48 cork dk. brown ATTIC - WEST END	Asbestos	None detected. This sample contains approx. trace Cellulose, 99% Quartz, Mica, Binder
13B	48-48 mastic black ATTIC - WEST END	Asbestos	Positive. This sample contains approx. 10% Chrysotile, 90% Quartz, CaCO ₃ , Mica, Binder
14A	48-49 cork dk. brown ATTIC - EAST	Asbestos	None detected. This sample contains approx. 2% Cellulose, 98% Quartz, CaCO ₃ , Mica, Binder
14B	48-49 covering white ATTIC - EAST	Asbestos	Positive. This sample contains approx. 60% Chrysotile, 40% Quartz, CaCO ₃ , Mica, Binder

THIS REPORT APPLIES TO THE STANDARDS OR PROCEDURES IDENTIFIED AND TO THE SAMPLE(S) TESTED. THE TEST RESULTS ARE NOT NECESSARILY INDICATIVE OR REPRESENTATIVE OF THE QUALITIES OF THE LOT FROM WHICH THE SAMPLE WAS TAKEN OR OF APPARENTLY IDENTICAL OR SIMILAR PRODUCTS, NOR DO THEY REPRESENT AN ONGOING QUALITY ASSURANCE PROGRAM UNLESS SO NOTED. THESE REPORTS ARE FOR THE EXCLUSIVE USE OF THE ADDRESSED CLIENT AND ARE RENDERED UPON THE CONDITION THAT THEY WILL NOT BE REPRODUCED WHOLLY OR IN PART FOR ADVERTISING OR OTHER PURPOSES OVER OUR SIGNATURE OR IN CONNECTION WITH OUR NAME WITHOUT SPECIAL WRITTEN PERMISSION. SAMPLES NOT DESTROYED IN TESTING ARE RETAINED A MAXIMUM OF THIRTY DAYS.

ACCREDITED BY THE NATIONAL INSTITUTE OF STANDARDS AND TECHNOLOGY, VOLUNTARY LABORATORY ACCREDITATION PROGRAM FOR SELECTED TEST METHOD FOR ASBESTOS. THE ACCREDITATION OR ANY REPORTS GENERATED BY THIS LABORATORY IN NO WAY CONSTITUTES OR IMPLIES PRODUCT CERTIFICATION, APPROVAL, OR ENDORSEMENT BY THE NATIONAL INSTITUTE OF STANDARDS AND TECHNOLOGY. ALL ANALYSES ARE DERIVED FROM CALIBRATED VISUAL ESTIMATE UNLESS OTHERWISE NOTED. POLARIZED-LIGHT IS NOT CONSISTENTLY RELIABLE IN DETECTING ASBESTOS IN FLOOR COVERINGS AND SIMILAR NON-FRIABLE ORGANICALLY BOUND MATERIALS. QUANTITATIVE TRANSMISSION ELECTRON MICROSCOPY IS CURRENTLY THE ONLY METHOD THAT CAN BE USED TO DETERMINE IF THIS MATERIAL CAN BE CONSIDERED OR TREATED AS NON-ASBESTOS-CONTAINING.

Analyst: Jason W. Sutter

By: Kurt Kettler

VLAP Accreditation #1926, CA ELAP #1913, TX DOH #30-0094

342 EAST THOMAS ROAD SCOTTSDALE, ARIZONA 85251-7216 (602) 990-2069 FAX: (602) 990-8468

2/15/99

ENVIRONMENTAL MANAGEMENT CONSULTANTS
BULK MATERIAL REPORT

Page 6 of 6

REPORT Laboratory Analysis: BULK MATERIAL
Client: ADVANCED TECHNOLOGIES CORP.
Reported to: MICHAEL LLEWELLYN
Sampled from: RATH ADMINISTRATIVE BLDG
Shipped via: FEDERAL EXPRESS

LAB: 54277
Methodology: EPA 600/M4-82-020
P/O#: 2ND FLOOR
Proj: H11720
By: Client

Received: 2/12/99 Reported: 2/15/99

AMPLE	IDENTIFICATION	PARAMETER	TEST RESULTS
15	48-50 paper white, beige ATTIC CENTRAL SOUTH	Asbestos	Positive. This sample contains approx. 50% Chrysotile, 30% Cellulose, 20% Quartz, CaCO , Binder

THE REPORT APPLIES TO THE STANDARDS OR PROCEDURES IDENTIFIED AND TO THE SAMPLE(S) TESTED. THE TEST RESULTS ARE NOT NECESSARILY INDICATIVE OR REPRESENTATIVE OF THE QUALITIES OF THE LOT FROM WHICH THE SAMPLE WAS TAKEN OR OF APPARENTLY IDENTICAL OR SIMILAR PRODUCTS, NOR DO THEY REPRESENT AN ONGOING QUALITY ASSURANCE PROGRAM UNLESS SO NOTED. THESE REPORTS ARE FOR THE EXCLUSIVE USE OF THE ADDRESSED CLIENT AND ARE RENDERED UPON THE CONDITION THAT THEY WILL NOT BE REPRODUCED WHOLLY OR IN PART FOR ADVERTISING OR OTHER PURPOSES OVER OUR SIGNATURE OR IN CONNECTION WITH OUR NAME WITHOUT SPECIAL WRITTEN PERMISSION. SAMPLES NOT DESTROYED IN TESTING ARE RETAINED A MAXIMUM OF THIRTY DAYS.

ACCREDITED BY THE NATIONAL INSTITUTE OF STANDARDS TECHNOLOGY, VOLUNTARY LABORATORY ACCREDITATION PROGRAM FOR SELECTED TEST METHOD FOR ASBESTOS. THE ACCREDITATION OR ANY REPORTS GENERATED BY THIS LABORATORY IN NO WAY CONSTITUTES OR IMPLIES PRODUCT CERTIFICATION, APPROVAL, OR ENDORSEMENT BY THE NATIONAL INSTITUTE OF STANDARDS AND TECHNOLOGY. ALL ANALYSES ARE DERIVED FROM CALIBRATED VISUAL ESTIMATE UNLESS OTHERWISE NOTED. POLARIZED-LIGHT IS NOT CONSISTENTLY RELIABLE IN DETECTING ASBESTOS IN FLOOR COVERINGS AND SIMILAR NON-FRIABLE ORGANICALLY BOUND MATERIALS. QUANTITATIVE TRANSMISSION ELECTRON MICROSCOPY IS CURRENTLY THE ONLY METHOD THAT CAN BE USED TO DETERMINE IF THIS MATERIAL CAN BE CONSIDERED OR TREATED AS NON-ASBESTOS-CONTAINING.


Analyst: Jason W. Sutter
By: Kurt Kettler

NVLAP Accreditation #1926, CA ELAP #1913, TX DOH #30-0094

7342 EAST THOMAS ROAD SCOTTSDALE, ARIZONA 85251-7216 (602) 990-2069 FAX: (602) 990-8468

2/17/99

ENVIRONMENTAL MANAGEMENT CONSULTANTS
BULK MATERIAL REPORT

Page 1 of 8

REPORT Laboratory Analysis: BULK MATERIAL

Client: ADVANCED TECHNOLOGIES CORP.

Reported to: MICHAEL LLEWELLYN

Sampled from: RATH ADMIN BLDG-ROOFS & EXT

Shipped via: FEDERAL EXPRESS

LAB: 54356

Methodology: EPA 600/M4-82-020

P/O#:

Proj: H11720

By: Client

Received: 2/16/99

Reported: 2/17/99

SAMPLE	IDENTIFICATION	PARAMETER	TEST RESULTS
01A	48-51 roofing felt, 1st layer black 1950 ADDITION ROOF	Asbestos	None detected. This sample contains approx. 30% Fiberglass, 70% Quartz, CaCO, Binder
01B	48-51 roofing felt, 2nd layer black 1950 ADDITION ROOF	Asbestos	None detected. This sample contains approx. 10% Fiberglass, 90% Quartz, CaCO, Binder
02A	48-52 roof flashing, 1st layer gray, black 1960 ADDITION ROOF	Asbestos	Positive. This sample contains approx. 10% Chrysotile, 90% Quartz, CaCO, Mica, Binder
02B	48-52 roof flashing, 2nd layer black 1960 ADDITION ROOF	Asbestos	None detected. This sample contains approx. trace Cellulose, 25% Fiberglass, 74% Quartz, CaCO, Mica, Binder
02C	48-52 roof flashing, 3rd layer black 1960 ADDITION ROOF	Asbestos	None detected. This sample contains approx. 15% Fiberglass, 85% Quartz, CaCO, Mica, Binder

THE REPORT APPLIES TO THE STANDARDS OR PROCEDURES IDENTIFIED AND TO THE SAMPLE(S) TESTED. THE TEST RESULTS ARE NOT NECESSARILY INDICATIVE OR REPRESENTATIVE OF THE QUALITIES OF THE LOT FROM WHICH THE SAMPLE WAS TAKEN OR OF APPARENTLY IDENTICAL OR SIMILAR PRODUCTS, NOR DO THEY REPRESENT AN ONGOING QUALITY ASSURANCE PROGRAM UNLESS SO NOTED. THESE REPORTS ARE FOR THE EXCLUSIVE USE OF THE ADDRESSED CLIENT AND ARE RENDERED UPON THE CONDITION THAT THEY WILL NOT BE REPRODUCED WHOLLY OR IN PART FOR ADVERTISING OR OTHER PURPOSES OVER OUR SIGNATURE OR IN CONNECTION WITH OUR NAME WITHOUT SPECIAL WRITTEN PERMISSION. SAMPLES NOT DESTROYED IN TESTING ARE RETAINED A MAXIMUM OF THIRTY DAYS.

ACCREDITED BY THE NATIONAL INSTITUTE OF STANDARDS AND TECHNOLOGY, VOLUNTARY LABORATORY ACCREDITATION PROGRAM FOR SELECTED TEST METHOD FOR ASBESTOS. THE ACCREDITATION OR ANY REPORTS GENERATED BY THIS LABORATORY IN NO WAY CONSTITUTES OR IMPLIES PRODUCT CERTIFICATION, APPROVAL, OR ENDORSEMENT BY THE NATIONAL INSTITUTE OF STANDARDS AND TECHNOLOGY. ALL ANALYSES ARE DERIVED FROM CALIBRATED VISUAL ESTIMATE UNLESS OTHERWISE NOTED. POLARIZED-LIGHT IS NOT CONSISTENTLY RELIABLE IN DETECTING ASBESTOS IN FLOOR COVERINGS AND SIMILAR NON-FRIABLE ORGANICALLY BOUND MATERIALS. QUANTITATIVE TRANSMISSION ELECTRON MICROSCOPY IS CURRENTLY THE ONLY METHOD THAT CAN BE USED TO DETERMINE IF THIS MATERIAL CAN BE CONSIDERED OR TREATED AS NON-ASBESTOS-CONTAINING.

Analyst: Jason W. Sutter

By: Kurt Kettler

VLAP Accreditation #1926, CA ELAP #1913, TX DOH #30-0094

142 EAST THOMAS ROAD SCOTTSDALE, ARIZONA 85251-7216 (602) 990-2069 FAX: (602) 990-8468

2/17/99

ENVIRONMENTAL MANAGEMENT CONSULTANTS

Page 3 of 8

BULK MATERIAL REPORT

REPORT Laboratory Analysis: BULK MATERIAL

Client: ADVANCED TECHNOLOGIES CORP.

Reported to: MICHAEL LLEWELLYN

Sampled from: RATH ADMIN BLDG-ROOFS & EXT

Shipped via: FEDERAL EXPRESS

LAB: 54356

Methodology: EPA 600/M4-82-020

P/O#:

Proj: H11720

By: Client

Received: 2/16/99

Reported: 2/17/99

SAMPLE	IDENTIFICATION	PARAMETER	TEST RESULTS
04B	48-54 roofing felt, 2nd layer black ORIGINAL BLDG-S. SIDE	Asbestos	None detected. This sample contains approx. trace Cellulose, 20% Fiberglass, 79% Binder
04C	48-54 roofing felt, 3rd layer black ORIGINAL BLDG-S. SIDE	Asbestos	None detected. This sample contains approx. 5% Cellulose, 5% Fiberglass, 90% CaCO ₃ , Binder
05A	48-55 roof flashing, 1st layer black ORIGINAL BLDG-N EDGE	Asbestos	None detected. This sample contains approx. 10% Fiberglass, 90% Quartz, CaCO ₃ , Mica, Binder
05B	48-55 roof flashing, 2nd layer black ORIGINAL BLDG-N EDGE	Asbestos	None detected. This sample contains approx. trace Cellulose, 5% Fiberglass, 94% Quartz, CaCO ₃ , Binder
05C	48-55 roof flashing black ORIGINAL BLDG-N EDGE	Asbestos	None detected. This sample contains approx. trace Cellulose, 20% Fiberglass, 79% Quartz, CaCO ₃ , Binder

THE REPORT APPLIES TO THE STANDARDS OR PROCEDURES IDENTIFIED AND TO THE SAMPLE(S) TESTED. THE TEST RESULTS ARE NOT NECESSARILY INDICATIVE OR REPRESENTATIVE OF THE QUALITIES OF THE LOT FROM WHICH THE SAMPLE WAS TAKEN OR OF APPARENTLY IDENTICAL OR SIMILAR PRODUCTS, NOR DO THEY REPRESENT AN ONGOING QUALITY ASSURANCE PROGRAM UNLESS SO NOTED. THESE REPORTS ARE FOR THE EXCLUSIVE USE OF THE ADDRESSED CLIENT AND ARE RENDERED UPON THE CONDITION THAT THEY WILL NOT BE REPRODUCED WHOLLY OR IN PART FOR ADVERTISING OR OTHER PURPOSES OVER OUR SIGNATURE OR IN CONNECTION WITH OUR NAME WITHOUT SPECIAL WRITTEN PERMISSION. SAMPLES NOT DESTROYED IN TESTING ARE RETAINED A MAXIMUM OF THIRTY DAYS.

ACCREDITED BY THE NATIONAL INSTITUTE OF STANDARDS AND TECHNOLOGY, VOLUNTARY LABORATORY ACCREDITATION PROGRAM FOR SELECTED TEST METHOD FOR ASBESTOS. THE ACCREDITATION OR ANY REPORTS GENERATED BY THIS LABORATORY IN NO WAY CONSTITUTES OR IMPLIES PRODUCT CERTIFICATION, APPROVAL, OR ENDORSEMENT BY THE NATIONAL INSTITUTE OF STANDARDS AND TECHNOLOGY. ALL ANALYSES ARE DERIVED FROM CALIBRATED VISUAL ESTIMATE UNLESS OTHERWISE NOTED. POLARIZED-LIGHT IS NOT CONSISTENTLY RELIABLE IN DETECTING ASBESTOS IN FLOOR COVERINGS AND SIMILAR NON-FRIABLE ORGANICALLY BOUND MATERIALS. QUANTITATIVE TRANSMISSION ELECTRON MICROSCOPY IS CURRENTLY THE ONLY METHOD THAT CAN BE USED TO DETERMINE IF THIS MATERIAL CAN BE CONSIDERED OR TREATED AS NON-ASBESTOS-CONTAINING.



Analyst: Jason W. Sutter



By: Kurt Kettler

VLAP Accreditation #1926, CA ELAP #1913, TX DOH #30-0094

42 EAST THOMAS ROAD SCOTTSDALE, ARIZONA 85251-7216 (602) 990-2069 FAX: (602) 990-8468

2/17/99

ENVIRONMENTAL MANAGEMENT CONSULTANTS
BULK MATERIAL REPORT

Page 4 of 8

REPORT Laboratory Analysis: BULK MATERIAL

Client: ADVANCED TECHNOLOGIES CORP.

Reported to: MICHAEL LLEWELLYN

Sampled from: RATH ADMIN BLDG-ROOFS & EXT

Shipped via: FEDERAL EXPRESS

LAB: 54356

Methodology: EPA 600/M4-82-020

P/O#:

Proj: H11720

By: Client

Received: 2/16/99

Reported: 2/17/99

SAMPLE	IDENTIFICATION	PARAMETER	TEST RESULTS
06A	48-56 roofing felt, 1st layer black ORIGINAL BLDG-E. END	Asbestos	None detected. This sample contains approx. 40% Cellulose, 60% Quartz, CaCO, Mica, Binder
06B	48-56 roofing felt, 2nd layer black ORIGINAL BLDG-E. END	Asbestos	None detected. This sample contains approx. 40% Cellulose, 60% Quartz, CaCO, Binder
06C	48-56 roofing felt, 3rd layer black ORIGINAL BLDG-E. END	Asbestos	None detected. This sample contains approx. 40% Cellulose, 60% Quartz, CaCO, Binder
06D	48-56 roofing felt, 4th layer black ORIGINAL BLDG-E. END	Asbestos	None detected. This sample contains approx. 35% Cellulose, 5% Synthetics, 60% Quartz, CaCO, Binder
06E	48-56 roofing felt, 5th layer black ORIGINAL BLDG-E. END	Asbestos	None detected. This sample contains approx. 40% Cellulose, 60% Quartz, CaCO, Binder

THE REPORT APPLIES TO THE STANDARDS OR PROCEDURES IDENTIFIED AND TO THE SAMPLE(S) TESTED. THE TEST RESULTS ARE NOT NECESSARILY INDICATIVE OR REPRESENTATIVE OF THE QUALITIES OF THE LOT FROM WHICH THE SAMPLE WAS TAKEN OR OF APPARENTLY IDENTICAL OR SIMILAR PRODUCTS, NOR DO THEY REPRESENT AN ONGOING QUALITY ASSURANCE PROGRAM UNLESS SO NOTED. THESE REPORTS ARE FOR THE EXCLUSIVE USE OF THE ADDRESSED CLIENT AND ARE RENDERED UPON THE CONDITION THAT THEY WILL NOT BE REPRODUCED WHOLLY OR IN PART FOR ADVERTISING OR OTHER PURPOSES OVER OUR SIGNATURE OR IN CONNECTION WITH OUR NAME WITHOUT SPECIAL WRITTEN PERMISSION. SAMPLES NOT DESTROYED IN TESTING ARE RETAINED A MAXIMUM OF THIRTY DAYS.

ACCREDITED BY THE NATIONAL INSTITUTE OF STANDARDS AND TECHNOLOGY, VOLUNTARY LABORATORY ACCREDITATION PROGRAM FOR SELECTED TEST METHOD FOR ASBESTOS. THE ACCREDITATION OR ANY REPORTS GENERATED BY THIS LABORATORY IN NO WAY CONSTITUTES OR IMPLIES PRODUCT CERTIFICATION, APPROVAL, OR ENDORSEMENT BY THE NATIONAL INSTITUTE OF STANDARDS AND TECHNOLOGY. ALL ANALYSES ARE DERIVED FROM CALIBRATED VISUAL ESTIMATE UNLESS OTHERWISE NOTED. POLARIZED-LIGHT IS NOT CONSISTENTLY RELIABLE IN DETECTING ASBESTOS IN FLOOR COVERINGS AND SIMILAR NON-FRIABLE ORGANICALLY BOUND MATERIALS. QUANTITATIVE TRANSMISSION ELECTRON MICROSCOPY IS CURRENTLY THE ONLY METHOD THAT CAN BE USED TO DETERMINE IF THIS MATERIAL CAN BE CONSIDERED OR TREATED AS NON-ASBESTOS-CONTAINING.

Analyst: Jason W. Sutter

By: Kurt Kettler

VLAP Accreditation #1926, CA ELAP #1913, TX DOH #30-0094

142 EAST THOMAS ROAD SCOTTSDALE, ARIZONA 85251-7216 (602) 990-2069 FAX: (602) 990-8468

1/7/99

ENVIRONMENTAL MANAGEMENT CONSULTANTS

Page 5 of 8

BULK MATERIAL REPORT

REPORT Laboratory Analysis: BULK MATERIAL

Client: ADVANCED TECHNOLOGIES CORP.

Reported to: MICHAEL LLEWELLYN

Sampled from: RATH ADMIN BLDG-ROOFS & EXT

Shipped via: FEDERAL EXPRESS

LAB: 54356

Methodology: EPA 600/M4-82-020

P/O#:

Proj: H11720

By: Client

Received: 2/16/99

Reported: 2/17/99

SAMPLE	IDENTIFICATION	PARAMETER	TEST RESULTS
07A	48-57 roof flashing green, black ORIGINAL BLDG-E. END	Asbestos	Positive. This sample contains approx. 3% Chrysotile, 15% Cellulose, 82% Quartz, CaCO ₃ , CaSO ₄ , Mica, Binder
07B	48-57 roof flashing, 2nd layer black ORIGINAL BLDG-E. END	Asbestos	Positive. This sample contains approx. 2% Chrysotile, 25% Cellulose, 73% Quartz, CaCO ₃ , Mica, Binder
07C	48-57 roof flashing, 3rd layer black ORIGINAL BLDG-E. END	Asbestos	None detected. This sample contains approx. 50% Cellulose, 10% Synthetics, 40% Quartz, CaCO ₃ , Mica, Binder, Opaques
07D	48-57 roof flashing, 4th layer black ORIGINAL BLDG-E. END	Asbestos	None detected. This sample contains approx. 55% Cellulose, 5% Synthetics, 40% Quartz, CaCO ₃ , Mica, Binder, Opaques
07E	48-57 roof flashing, 5th layer black ORIGINAL BLDG-E. END	Asbestos	None detected. This sample contains approx. 50% Cellulose, 50% Quartz, CaCO ₃ , Binder

THE REPORT APPLIES TO THE STANDARDS OR PROCEDURES IDENTIFIED AND TO THE SAMPLE(S) TESTED. THE TEST RESULTS ARE NOT NECESSARILY INDICATIVE OR REPRESENTATIVE OF THE QUALITIES OF THE LOT FROM WHICH THE SAMPLE WAS TAKEN OR OF APPARENTLY IDENTICAL OR SIMILAR PRODUCTS, NOR DO THEY REPRESENT AN ONGOING QUALITY ASSURANCE PROGRAM UNLESS SO NOTED. THESE REPORTS ARE FOR THE EXCLUSIVE USE OF THE ADDRESSED CLIENT AND ARE RENDERED UPON THE CONDITION THAT THEY WILL NOT BE REPRODUCED WHOLLY OR IN PART FOR ADVERTISING OR OTHER PURPOSES OVER OUR SIGNATURE OR IN CONNECTION WITH OUR NAME WITHOUT SPECIAL WRITTEN PERMISSION. SAMPLES NOT DESTROYED IN TESTING ARE RETAINED A MAXIMUM OF THIRTY DAYS.

ACCREDITED BY THE NATIONAL INSTITUTE OF STANDARDS AND TECHNOLOGY, VOLUNTARY LABORATORY ACCREDITATION PROGRAM FOR SELECTED TEST METHOD FOR ASBESTOS. THE ACCREDITATION OR ANY REPORTS GENERATED BY THIS LABORATORY IN NO WAY CONSTITUTES OR IMPLIES PRODUCT CERTIFICATION, APPROVAL, OR ENDORSEMENT BY THE NATIONAL INSTITUTE OF STANDARDS AND TECHNOLOGY. ALL ANALYSES ARE DERIVED FROM CALIBRATED VISUAL ESTIMATE UNLESS OTHERWISE NOTED. POLARIZED-LIGHT IS NOT CONSISTENTLY RELIABLE IN DETECTING ASBESTOS IN FLOOR COVERINGS AND SIMILAR NON-FRIABLE ORGANICALLY BOUND MATERIALS. QUANTITATIVE TRANSMISSION ELECTRON MICROSCOPY IS CURRENTLY THE ONLY METHOD THAT CAN BE USED TO DETERMINE IF THIS MATERIAL CAN BE CONSIDERED OR TREATED AS NON-ASBESTOS-CONTAINING.

Analyst: Jason W. Sutter

By: Kurt Kettler

EPA/ELAP Accreditation #1926, CA ELAP #1913, TX DOH #30-0094

42 EAST THOMAS ROAD SCOTTSDALE, ARIZONA 85251-7216 (602) 990-2069 FAX: (602) 990-8468

17/99

ENVIRONMENTAL MANAGEMENT CONSULTANTS
BULK MATERIAL REPORT

Page 6 of 8

REPORT Laboratory Analysis: BULK MATERIAL

Client: ADVANCED TECHNOLOGIES CORP.

Reported to: MICHAEL LLEWELLYN

Sampled from: RATH ADMIN BLDG-ROOFS & EXT

Shipped via: FEDERAL EXPRESS

LAB: 54356

Methodology: EPA 600/M4-82-020

P/O#:

Proj: H11720

By: Client

Received: 2/16/99

Reported: 2/17/99

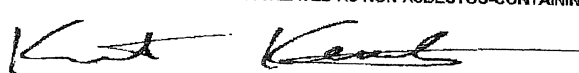
SAMPLE	IDENTIFICATION	PARAMETER	TEST RESULTS
08A	48-58 roofing felt black ORIGINAL BLDG-E. END	Asbestos	None detected. This sample contains approx. 30% Fiberglass, 70% Quartz, CaCO, Mica, Binder
08B	48-58 roofing felt, 2nd layer black ORIGINAL BLDG-E. END	Asbestos	Positive. This sample contains approx. 40% Chrysotile, 15% Cellulose, 45% Quartz, CaCO, Mica, Binder
08C	48-58 roofing felt, 3rd layer black ORIGINAL BLDG-E. END	Asbestos	Positive. This sample contains approx. 50% Chrysotile, 5% Cellulose, 45% Quartz, CaCO, Binder
08D	48-58 roofing felt, 4th layer black ORIGINAL BLDG-E. END	Asbestos	Positive. This sample contains approx. 50% Chrysotile, 5% Cellulose, 45% Quartz, CaCO, Mica, Binder
08E	48-58 roofing felt, 5th layer black ORIGINAL BLDG-E. END	Asbestos	Positive. This sample contains approx. 50% Chrysotile, 5% Cellulose, 45% Quartz, CaCO, Binder

THE REPORT APPLIES TO THE STANDARDS OR PROCEDURES IDENTIFIED AND TO THE SAMPLE(S) TESTED. THE TEST RESULTS ARE NOT NECESSARILY INDICATIVE OR REPRESENTATIVE OF THE QUALITIES OF THE LOT FROM WHICH THE SAMPLE WAS TAKEN OR OF APPARENTLY IDENTICAL OR SIMILAR PRODUCTS, NOR DO THEY REPRESENT AN ONGOING QUALITY ASSURANCE PROGRAM UNLESS SO NOTED. THESE REPORTS ARE FOR THE EXCLUSIVE USE OF THE ADDRESSED CLIENT AND ARE RENDERED UPON THE CONDITION THAT THEY WILL NOT BE REPRODUCED WHOLLY OR IN PART FOR ADVERTISING OR OTHER PURPOSES OVER OUR SIGNATURE OR IN CONNECTION WITH OUR NAME WITHOUT SPECIAL WRITTEN PERMISSION. SAMPLES NOT DESTROYED IN TESTING ARE RETAINED A MAXIMUM OF THIRTY DAYS.

ACCREDITED BY THE NATIONAL INSTITUTE OF STANDARDS AND TECHNOLOGY, VOLUNTARY LABORATORY ACCREDITATION PROGRAM FOR SELECTED TEST METHOD FOR ASBESTOS. THE ACCREDITATION OR ANY REPORTS GENERATED BY THIS LABORATORY IN NO WAY CONSTITUTES OR IMPLIES PRODUCT CERTIFICATION, APPROVAL, OR ENDORSEMENT BY THE NATIONAL INSTITUTE OF STANDARDS AND TECHNOLOGY. ALL ANALYSES ARE DERIVED FROM CALIBRATED VISUAL ESTIMATE UNLESS OTHERWISE NOTED. POLARIZED-LIGHT IS NOT CONSISTENTLY RELIABLE IN DETECTING ASBESTOS IN FLOOR COVERINGS AND SIMILAR NON-FRIABLE ORGANICALLY BOUND MATERIALS. QUANTITATIVE TRANSMISSION ELECTRON MICROSCOPY IS CURRENTLY THE ONLY METHOD THAT CAN BE USED TO DETERMINE IF THIS MATERIAL CAN BE CONSIDERED OR TREATED AS NON-ASBESTOS-CONTAINING.



Analyst: Jason W. Sutter



By: Kurt Kettler

VLAP Accreditation #1926, CA ELAP #1913, TX DOH #30-0094

142 EAST THOMAS ROAD SCOTTSDALE, ARIZONA 85251-7216 (602) 990-2069 FAX: (602) 990-8468

17/99

ENVIRONMENTAL MANAGEMENT CONSULTANTS

Page 7 of 8

BULK MATERIAL REPORT

REPORT Laboratory Analysis: BULK MATERIAL

Client: ADVANCED TECHNOLOGIES CORP.

Reported to: MICHAEL LLEWELLYN

Sampled from: RATH ADMIN BLDG-ROOFS & EXT

Shipped via: FEDERAL EXPRESS

LAB: 54356

Methodology: EPA 600/M4-82-020

P/O#:

Proj: H11720

By: Client

Received: 2/16/99

Reported: 2/17/99

SAMPLE	IDENTIFICATION	PARAMETER	TEST RESULTS
08F	48-58 roofing felt, 6th layer black ORIGINAL BLDG-E. END	Asbestos	Positive. This sample contains approx. 45% Chrysotile, 10% Cellulose, 45% Quartz, CaCO ₃ , Mica, Binder
08G	48-58 roofing felt, 7th layer black ORIGINAL BLDG-E. END	Asbestos	Positive. This sample contains approx. 5% Chrysotile, 20% Cellulose, 75% Quartz, CaCO ₃ , Mica, Binder
08H	48-58 roofing felt, 8th layer black ORIGINAL BLDG-E. END	Asbestos	Positive. This sample contains approx. 35% Chrysotile, 5% Cellulose, 60% Quartz, CaCO ₃ , Mica, Binder
08I	48-58 roofing felt, 9th layer black ORIGINAL BLDG-E. END	Asbestos	Positive. This sample contains approx. 30% Chrysotile, 5% Cellulose, 10% Fiberglass, 55% Quartz, CaCO ₃ , Mica, Binder
09	48-59 exterior, window caulking white 1950 ADDITION-EXT. WIN	Asbestos	Positive. This sample contains approx. 5% Chrysotile, 2% Cellulose, 93% Quartz, CaCO ₃ , Binder

THE REPORT APPLIES TO THE STANDARDS OR PROCEDURES IDENTIFIED AND TO THE SAMPLE(S) TESTED. THE TEST RESULTS ARE NOT NECESSARILY INDICATIVE OR REPRESENTATIVE OF THE QUALITIES OF THE LOT FROM WHICH THE SAMPLE WAS TAKEN OR OF APPARENTLY IDENTICAL OR SIMILAR PRODUCTS, NOR DO THEY REPRESENT AN ONGOING QUALITY ASSURANCE PROGRAM UNLESS SO NOTED. THESE REPORTS ARE FOR THE EXCLUSIVE USE OF THE ADDRESSED CLIENT AND ARE RENDERED UPON THE CONDITION THAT THEY WILL NOT BE REPRODUCED WHOLLY OR IN PART FOR ADVERTISING OR OTHER PURPOSES OVER OUR SIGNATURE OR IN CONNECTION WITH OUR NAME WITHOUT SPECIAL WRITTEN PERMISSION. SAMPLES NOT DESTROYED IN TESTING ARE RETAINED A MAXIMUM OF THIRTY DAYS.

ACCREDITED BY THE NATIONAL INSTITUTE OF STANDARDS AND TECHNOLOGY, VOLUNTARY LABORATORY ACCREDITATION PROGRAM FOR SELECTED TEST METHOD FOR ASBESTOS. THE ACCREDITATION OR ANY REPORTS GENERATED BY THIS LABORATORY IN NO WAY CONSTITUTES OR IMPLIES PRODUCT CERTIFICATION, APPROVAL, OR ENDORSEMENT BY THE NATIONAL INSTITUTE OF STANDARDS AND TECHNOLOGY. ALL ANALYSES ARE DERIVED FROM CALIBRATED VISUAL ESTIMATE UNLESS OTHERWISE NOTED. POLARIZED-LIGHT IS NOT CONSISTENTLY RELIABLE IN DETECTING ASBESTOS IN FLOOR COVERINGS AND SIMILAR NON-FRIABLE ORGANICALLY BOUND MATERIALS. QUANTITATIVE TRANSMISSION ELECTRON MICROSCOPY IS CURRENTLY THE ONLY METHOD THAT CAN BE USED TO DETERMINE IF THIS MATERIAL CAN BE CONSIDERED OR TREATED AS NON-ASBESTOS-CONTAINING.

Analyst: Jason W. Sutter

By: Kurt Kettler

VLAP Accreditation #1926, CA ELAP #1913, TX DOH #30-0094

142 EAST THOMAS ROAD SCOTTSDALE, ARIZONA 85251-7216 (602) 990-2069 FAX: (602) 990-8468

2/17/99

ENVIRONMENTAL MANAGEMENT CONSULTANTS
BULK MATERIAL REPORT

Page 8 of 8

REPORT Laboratory Analysis: BULK MATERIAL

Client: ADVANCED TECHNOLOGIES CORP.

Reported to: MICHAEL LLEWELLYN

Sampled from: RATH ADMIN BLDG-ROOFS & EXT

Shipped via: FEDERAL EXPRESS

LAB: 54356

Methodology: EPA 600/M4-82-020

P/O#:

Proj: H11720

By: Client

Received: 2/16/99

Reported: 2/17/99

SAMPLE	IDENTIFICATION	PARAMETER	TEST RESULTS
10	48-60 exterior, window caulking white ORIGINAL BLDG-EXT. WIN	Asbestos	Positive. This sample contains approx. 5% Chrysotile, 95% Quartz, CaCO ₃ , Mica, Binder

THE REPORT APPLIES TO THE STANDARDS OR PROCEDURES IDENTIFIED AND TO THE SAMPLE(S) TESTED. THE TEST RESULTS ARE NOT NECESSARILY INDICATIVE OR REPRESENTATIVE OF THE QUALITIES OF THE LOT FROM WHICH THE SAMPLE WAS TAKEN OR OF APPARENTLY IDENTICAL OR SIMILAR PRODUCTS, NOR DO THEY REPRESENT AN ONGOING QUALITY ASSURANCE PROGRAM UNLESS SO NOTED. THESE REPORTS ARE FOR THE EXCLUSIVE USE OF THE ADDRESSED CLIENT AND ARE RENDERED UPON THE CONDITION THAT THEY WILL NOT BE REPRODUCED WHOLLY OR IN PART FOR ADVERTISING OR OTHER PURPOSES OVER OUR SIGNATURE OR IN CONNECTION WITH OUR NAME WITHOUT SPECIAL WRITTEN PERMISSION. SAMPLES NOT DESTROYED IN TESTING ARE RETAINED A MAXIMUM OF THIRTY DAYS.

ACCREDITED BY THE NATIONAL INSTITUTE OF STANDARDS AND TECHNOLOGY, VOLUNTARY LABORATORY ACCREDITATION PROGRAM FOR SELECTED TEST METHOD FOR ASBESTOS. THE ACCREDITATION OR ANY REPORTS GENERATED BY THIS LABORATORY IN NO WAY CONSTITUTES OR IMPLIES PRODUCT CERTIFICATION, APPROVAL, OR ENDORSEMENT BY THE NATIONAL INSTITUTE OF STANDARDS AND TECHNOLOGY. ALL ANALYSES ARE DERIVED FROM CALIBRATED VISUAL ESTIMATE UNLESS OTHERWISE NOTED. POLARIZED-LIGHT IS NOT CONSISTENTLY RELIABLE IN DETECTING ASBESTOS IN FLOOR COVERINGS AND SIMILAR NON-FRIABLE ORGANICALLY BOUND MATERIALS. QUANTITATIVE TRANSMISSION ELECTRON MICROSCOPY IS CURRENTLY THE ONLY METHOD THAT CAN BE USED TO DETERMINE IF THIS MATERIAL CAN BE CONSIDERED OR TREATED AS NON-ASBESTOS-CONTAINING.

Analyst: Jason W. Sutter

By: Kurt Kettler

VLAP Accreditation #1926, CA ELAP #1913, TX DOH #30-0094

42 EAST THOMAS ROAD SCOTTSDALE, ARIZONA 85251-7216 (602) 990-2069 FAX: (602) 990-8468

2/7/99

ENVIRONMENTAL MANAGEMENT CONSULTANTS

Page 1 of 4

BULK MATERIAL REPORT

REPORT Laboratory Analysis: BULK MATERIAL

Client: ADVANCED TECHNOLOGIES CORP.

Reported to: MICHAEL LLEWELLYN

Sampled from: ADAMS BLDG

Shipped via: FEDERAL EXPRESS

LAB: 54357

Methodology: EPA 600/M4-82-020

P/O#:

Proj: H11720

By: Client

Received: 2/16/99

Reported: 2/17/99

SAMPLE	IDENTIFICATION	PARAMETER	TEST RESULTS
01	A-1 drywall beige BSMT HALLWAY	Asbestos	None detected. This sample contains approx. 100% Quartz , CaCO , Mica , Binder
02A	A-2 cork dk. brown BSMT FREEZER CEILING	Asbestos	None detected. This sample contains approx. 100% Binder , Cork
02B	A-2 tar black BSMT FREEZER CEILING	Asbestos	Positive. This sample contains approx. 8% Chrysotile, 92% Quartz , CaCO , Binder
03A	A-3 drywall, plaster - scratch coat beige 1ST FL	Asbestos	None detected. This sample contains approx. 100% Perlite , Quartz , CaSO , Binder
03B	A-3 drywall, plaster - finish coat beige 1ST FL	Asbestos	None detected. This sample contains approx. trace Cellulose, 99% Quartz , CaCO , CaSO , Mica , Binder

THE REPORT APPLIES TO THE STANDARDS OR PROCEDURES IDENTIFIED AND TO THE SAMPLE(S) TESTED. THE TEST RESULTS ARE NOT NECESSARILY INDICATIVE OR REPRESENTATIVE OF THE QUALITIES OF THE LOT FROM WHICH THE SAMPLE WAS TAKEN OR OF APPARENTLY IDENTICAL OR SIMILAR PRODUCTS, NOR DO THEY REPRESENT AN ONGOING QUALITY ASSURANCE PROGRAM UNLESS SO NOTED. THESE REPORTS ARE FOR THE EXCLUSIVE USE OF THE ADDRESSED CLIENT AND ARE RENDERED UPON THE CONDITION THAT THEY WILL NOT BE REPRODUCED WHOLLY OR IN PART FOR ADVERTISING OR OTHER PURPOSES OVER OUR SIGNATURE OR IN CONNECTION WITH OUR NAME WITHOUT SPECIAL WRITTEN PERMISSION. SAMPLES NOT DESTROYED IN TESTING ARE RETAINED A MAXIMUM OF THIRTY DAYS.

ACCREDITED BY THE NATIONAL INSTITUTE OF STANDARDS AND TECHNOLOGY, VOLUNTARY LABORATORY ACCREDITATION PROGRAM FOR SELECTED TEST METHOD FOR ASBESTOS. THE ACCREDITATION OR ANY REPORTS GENERATED BY THIS LABORATORY IN NO WAY CONSTITUTES OR IMPLIES PRODUCT CERTIFICATION, APPROVAL, OR ENDORSEMENT BY THE NATIONAL INSTITUTE OF STANDARDS AND TECHNOLOGY. ALL ANALYSES ARE DERIVED FROM CALIBRATED VISUAL ESTIMATE UNLESS OTHERWISE NOTED. POLARIZED-LIGHT IS NOT CONSISTENTLY RELIABLE IN DETECTING ASBESTOS IN FLOOR COVERINGS AND SIMILAR NON-FRIABLE ORGANICALLY BOUND MATERIALS. QUANTITATIVE TRANSMISSION ELECTRON MICROSCOPY IS CURRENTLY THE ONLY METHOD THAT CAN BE USED TO DETERMINE IF THIS MATERIAL CAN BE CONSIDERED OR TREATED AS NON-ASBESTOS-CONTAINING.


Analyst: Ken Scheske
By: Kurt Kettler

VLAP Accreditation #1926, CA ELAP #1913, TX DOH #30-0094

142 EAST THOMAS ROAD SCOTTSDALE, ARIZONA 85251-7216 (602) 990-2069 FAX: (602) 990-8468

17/99

ENVIRONMENTAL MANAGEMENT CONSULTANTS
BULK MATERIAL REPORT

Page 2 of 4

REPORT Laboratory Analysis: BULK MATERIAL

Client: ADVANCED TECHNOLOGIES CORP.

Reported to: MICHAEL LLEWELLYN

Sampled from: ADAMS BLDG

Shipped via: FEDERAL EXPRESS

LAB: 54357

Methodology: EPA 600/M4-82-020

P/O#:

Proj: H11720

By: Client

Received: 2/16/99

Reported: 2/17/99

SAMPLE	IDENTIFICATION	PARAMETER	TEST RESULTS
04A	A-4 drywall, plaster - scratch coat beige 2ND FL	Asbestos	None detected. This sample contains approx. 100% Quartz, CaSO, Mica, Binder
04B	A-4 drywall, plaster - finish coat beige 2ND FL	Asbestos	None detected. This sample contains approx. trace Cellulose, 99% Quartz, CaSO, Mica, Binder
05	A-5 felt, paper black STAIR COVERINGS	Asbestos	None detected. This sample contains approx. 30% Cellulose, 70% CaCO, Binder
06A	A-6 roofing felt, 1st layer black ROOF	Asbestos	None detected. This sample contains approx. 25% Cellulose, 3% Synthetics, 72% CaCO, Binder
06B	A-6 roofing felt, 2nd layer black ROOF	Asbestos	Positive. This sample contains approx. 20% Chrysotile, 80% CaCO, Binder

THE REPORT APPLIES TO THE STANDARDS OR PROCEDURES IDENTIFIED AND TO THE SAMPLE(S) TESTED. THE TEST RESULTS ARE NOT NECESSARILY INDICATIVE OR REPRESENTATIVE OF THE QUALITIES OF THE LOT FROM WHICH THE SAMPLE WAS TAKEN OR OF APPARENTLY IDENTICAL OR SIMILAR PRODUCTS, NOR DO THEY REPRESENT AN ONGOING QUALITY ASSURANCE PROGRAM UNLESS SO NOTED. THESE REPORTS ARE FOR THE EXCLUSIVE USE OF THE ADDRESSED CLIENT AND ARE RENDERED UPON THE CONDITION THAT THEY WILL NOT BE REPRODUCED WHOLLY OR IN PART FOR ADVERTISING OR OTHER PURPOSES OVER OUR SIGNATURE OR IN CONNECTION WITH OUR NAME WITHOUT SPECIAL WRITTEN PERMISSION. SAMPLES NOT DESTROYED IN TESTING ARE RETAINED A MAXIMUM OF THIRTY DAYS.

ACCREDITED BY THE NATIONAL INSTITUTE OF STANDARDS AND TECHNOLOGY, VOLUNTARY LABORATORY ACCREDITATION PROGRAM FOR SELECTED TEST METHOD FOR ASBESTOS. THE ACCREDITATION OR ANY REPORTS GENERATED BY THIS LABORATORY IN NO WAY CONSTITUTES OR IMPLIES PRODUCT CERTIFICATION, APPROVAL, OR ENDORSEMENT BY THE NATIONAL INSTITUTE OF STANDARDS AND TECHNOLOGY. ALL ANALYSES ARE DERIVED FROM CALIBRATED VISUAL ESTIMATE UNLESS OTHERWISE NOTED. POLARIZED-LIGHT IS NOT CONSISTENTLY RELIABLE IN DETECTING ASBESTOS IN FLOOR COVERINGS AND SIMILAR NON-FRIABLE ORGANICALLY BOUND MATERIALS. QUANTITATIVE TRANSMISSION ELECTRON MICROSCOPY IS CURRENTLY THE ONLY METHOD THAT CAN BE USED TO DETERMINE IF THIS MATERIAL CAN BE CONSIDERED OR TREATED AS NON-ASBESTOS-CONTAINING.

Analyst: Ken Scheske

By: Kurt Kettler

VLAP Accreditation #1926, CA ELAP #1913, TX DOH #30-0094

442 EAST THOMAS ROAD SCOTTSDALE, ARIZONA 85251-7216 (602) 990-2069 FAX: (602) 990-8468

2/17/99

ENVIRONMENTAL MANAGEMENT CONSULTANTS

Page 3 of 4

BULK MATERIAL REPORT

REPORT Laboratory Analysis: BULK MATERIAL

Client: ADVANCED TECHNOLOGIES CORP.

Reported to: MICHAEL LLEWELLYN

Sampled from: ADAMS BLDG

Shipped via: FEDERAL EXPRESS

LAB: 54357

Methodology: EPA 600/M4-82-020

P/O#:

Proj: H11720

By: Client

Received: 2/16/99

Reported: 2/17/99

SAMPLE	IDENTIFICATION	PARAMETER	TEST RESULTS
06C	A-6 insulation beige ROOF	Asbestos	None detected. This sample contains approx. 75% Cellulose, 25% Perlite, CaCO, Binder
07A	A-7 roof flashing, 1st layer black ROOF	Asbestos	Positive. This sample contains approx. 10% Chrysotile, 90% CaCO, Binder
07B	A-7 roof flashing, 2nd layer black ROOF	Asbestos	None detected. This sample contains approx. 100% Quartz, CaCO, Binder
07C	A-7 roof flashing, 3rd layer black ROOF	Asbestos	None detected. This sample contains approx. 100% CaCO, Binder
08A	A-8 roof flashing, 1st layer gray ROOF	Asbestos	Positive. This sample contains approx. 10% Chrysotile, 2% Fiberglass, 88% CaCO, Binder

THE REPORT APPLIES TO THE STANDARDS OR PROCEDURES IDENTIFIED AND TO THE SAMPLE(S) TESTED. THE TEST RESULTS ARE NOT NECESSARILY INDICATIVE OR REPRESENTATIVE OF THE QUALITIES OF THE LOT FROM WHICH THE SAMPLE WAS TAKEN OR OF APPARENTLY IDENTICAL OR SIMILAR PRODUCTS, NOR DO THEY REPRESENT AN ONGOING QUALITY ASSURANCE PROGRAM UNLESS SO NOTED. THESE REPORTS ARE FOR THE EXCLUSIVE USE OF THE ADDRESSED CLIENT AND ARE RENDERED UPON THE CONDITION THAT THEY WILL NOT BE REPRODUCED WHOLLY OR IN PART FOR ADVERTISING OR OTHER PURPOSES OVER OUR SIGNATURE OR IN CONNECTION WITH OUR NAME WITHOUT SPECIAL WRITTEN PERMISSION. SAMPLES NOT DESTROYED IN TESTING ARE RETAINED A MAXIMUM OF THIRTY DAYS.

ACCREDITED BY THE NATIONAL INSTITUTE OF STANDARDS AND TECHNOLOGY, VOLUNTARY LABORATORY ACCREDITATION PROGRAM FOR SELECTED TEST METHOD FOR ASBESTOS. THE ACCREDITATION OR ANY REPORTS GENERATED BY THIS LABORATORY IN NO WAY CONSTITUTES OR IMPLIES PRODUCT CERTIFICATION, APPROVAL, OR ENDORSEMENT BY THE NATIONAL INSTITUTE OF STANDARDS AND TECHNOLOGY. ALL ANALYSES ARE DERIVED FROM CALIBRATED VISUAL ESTIMATE UNLESS OTHERWISE NOTED. POLARIZED-LIGHT IS NOT CONSISTENTLY RELIABLE IN DETECTING ASBESTOS IN FLOOR COVERINGS AND SIMILAR NON-FRIABLE ORGANICALLY BOUND MATERIALS. QUANTITATIVE TRANSMISSION ELECTRON MICROSCOPY IS CURRENTLY THE ONLY METHOD THAT CAN BE USED TO DETERMINE IF THIS MATERIAL CAN BE CONSIDERED OR TREATED AS NON-ASBESTOS-CONTAINING.

Analyst: Ken Scheske

By: Kurt Kettler

/LAP Accreditation #1926, CA ELAP #1913, TX DOH #30-0094

42 EAST THOMAS ROAD SCOTTSDALE, ARIZONA 85251-7216 (602) 990-2069 FAX: (602) 990-8468

2/17/99

ENVIRONMENTAL MANAGEMENT CONSULTANTS
BULK MATERIAL REPORT

Page 4 of 4

REPORT Laboratory Analysis: BULK MATERIAL

Client: ADVANCED TECHNOLOGIES CORP.

Reported to: MICHAEL LLEWELLYN

Sampled from: ADAMS BLDG

Shipped via: FEDERAL EXPRESS

LAB: 54357

Methodology: EPA 600/M4-82-020

P/O#:

Proj: H11720

By: Client


Received: 2/16/99

Reported: 2/17/99

SAMPLE	IDENTIFICATION	PARAMETER	TEST RESULTS
08B	A-8 roof flashing, 2nd layer black ROOF	Asbestos	None detected. This sample contains approx. 20% Fiberglass, 80% CaCO ₃ , Binder
08C	A-8 roof flashing, 3rd layer black ROOF	Asbestos	Positive. This sample contains approx. 10% Chrysotile, 25% Cellulose, 65% CaCO ₃ , Binder

THE REPORT APPLIES TO THE STANDARDS OR PROCEDURES IDENTIFIED AND TO THE SAMPLE(S) TESTED. THE TEST RESULTS ARE NOT NECESSARILY INDICATIVE OR REPRESENTATIVE OF THE QUALITIES OF THE LOT FROM WHICH THE SAMPLE WAS TAKEN OR OF APPARENTLY IDENTICAL OR SIMILAR PRODUCTS, NOR DO THEY REPRESENT AN ONGOING QUALITY ASSURANCE PROGRAM UNLESS SO NOTED. THESE REPORTS ARE FOR THE EXCLUSIVE USE OF THE ADDRESSED CLIENT AND ARE RENDERED UPON THE CONDITION THAT THEY WILL NOT BE REPRODUCED WHOLLY OR IN PART FOR ADVERTISING OR OTHER PURPOSES OVER OUR SIGNATURE OR IN CONNECTION WITH OUR NAME WITHOUT SPECIAL WRITTEN PERMISSION. SAMPLES NOT DESTROYED IN TESTING ARE RETAINED A MAXIMUM OF THIRTY DAYS.

ACCREDITED BY THE NATIONAL INSTITUTE OF STANDARDS AND TECHNOLOGY, VOLUNTARY LABORATORY ACCREDITATION PROGRAM FOR SELECTED TEST METHOD FOR ASBESTOS. THE ACCREDITATION OR ANY REPORTS GENERATED BY THIS LABORATORY IN NO WAY CONSTITUTES OR IMPLIES PRODUCT CERTIFICATION, APPROVAL, OR ENDORSEMENT BY THE NATIONAL INSTITUTE OF STANDARDS AND TECHNOLOGY. ALL ANALYSES ARE DERIVED FROM CALIBRATED VISUAL ESTIMATE UNLESS OTHERWISE NOTED. POLARIZED-LIGHT IS NOT CONSISTENTLY RELIABLE IN DETECTING ASBESTOS IN FLOOR COVERINGS AND SIMILAR NON-FRIABLE ORGANICALLY BOUND MATERIALS. QUANTITATIVE TRANSMISSION ELECTRON MICROSCOPY IS CURRENTLY THE ONLY METHOD THAT CAN BE USED TO DETERMINE IF THIS MATERIAL CAN BE CONSIDERED OR TREATED AS NON-ASBESTOS-CONTAINING.


Analyst: Ken Scheske
By: Kurt Kettler

VLAP Accreditation #1926, CA ELAP #1913, TX DOH #30-0094

42 EAST THOMAS ROAD SCOTTSDALE, ARIZONA 85251-7216 (602) 990-2069 FAX: (602) 990-8468

17/99

ENVIRONMENTAL MANAGEMENT CONSULTANTS

Page 2 of 8

BULK MATERIAL REPORT

REPORT Laboratory Analysis: BULK MATERIAL

Client: ADVANCED TECHNOLOGIES CORP.

Reported to: MICHAEL LLEWELLYN

Sampled from: RATH ADMIN BLDG-ROOFS & EXT

Shipped via: FEDERAL EXPRESS

LAB: 54356

Methodology: EPA 600/M4-82-020

P/O#:

Proj: H11720

By: Client

Received: 2/16/99

Reported: 2/17/99

SAMPLE	IDENTIFICATION	PARAMETER	TEST RESULTS
02D	48-52 roof flashing, 4th layer black 1960 ADDITION ROOF	Asbestos	None detected. This sample contains approx. 40% Cellulose, 60% Quartz, CaCO ₃ , Mica, Binder
02E	48-52 tar, seam black 1960 ADDITION ROOF	Asbestos	None detected. This sample contains approx. 100% Quartz, CaCO ₃ , Binder
03A	48-53 roofing felt black ORIGINAL BLDG-N SIDE	Asbestos	None detected. This sample contains approx. trace Cellulose, 30% Fiberglass, 69% Binder
03B	48-53 insulation beige ORIGINAL BLDG-N SIDE	Asbestos	None detected. This sample contains approx. 80% Cellulose, 20% Perlite, Quartz, Mica, Binder
04A	48-54 roof mastic, 1st layer black ORIGINAL BLDG-S. SIDE	Asbestos	None detected. This sample contains approx. trace Fiberglass, 99% CaCO ₃ , Binder

THE REPORT APPLIES TO THE STANDARDS OR PROCEDURES IDENTIFIED AND TO THE SAMPLE(S) TESTED. THE TEST RESULTS ARE NOT NECESSARILY INDICATIVE OR REPRESENTATIVE OF THE QUALITIES OF THE LOT FROM WHICH THE SAMPLE WAS TAKEN OR OF APPARENTLY IDENTICAL OR SIMILAR PRODUCTS, NOR DO THEY REPRESENT AN ONGOING QUALITY ASSURANCE PROGRAM UNLESS SO NOTED. THESE REPORTS ARE FOR THE EXCLUSIVE USE OF THE ADDRESSED CLIENT AND ARE RENDERED UPON THE CONDITION THAT THEY WILL NOT BE REPRODUCED WHOLLY OR IN PART FOR ADVERTISING OR OTHER PURPOSES OVER OUR SIGNATURE OR IN CONNECTION WITH OUR NAME WITHOUT SPECIAL WRITTEN PERMISSION. SAMPLES NOT DESTROYED IN TESTING ARE RETAINED A MAXIMUM OF THIRTY DAYS.

ACCREDITED BY THE NATIONAL INSTITUTE OF STANDARDS AND TECHNOLOGY, VOLUNTARY LABORATORY ACCREDITATION PROGRAM FOR SELECTED TEST METHOD FOR ASBESTOS. THE ACCREDITATION OR ANY REPORTS GENERATED BY THIS LABORATORY IN NO WAY CONSTITUTES OR IMPLIES PRODUCT CERTIFICATION, APPROVAL, OR ENDORSEMENT BY THE NATIONAL INSTITUTE OF STANDARDS AND TECHNOLOGY. ALL ANALYSES ARE DERIVED FROM CALIBRATED VISUAL ESTIMATE UNLESS OTHERWISE NOTED. POLARIZED-LIGHT IS NOT CONSISTENTLY RELIABLE IN DETECTING ASBESTOS IN FLOOR COVERINGS AND SIMILAR NON-FRIABLE ORGANICALLY BOUND MATERIALS. QUANTITATIVE TRANSMISSION ELECTRON MICROSCOPY IS CURRENTLY THE ONLY METHOD THAT CAN BE USED TO DETERMINE IF THIS MATERIAL CAN BE CONSIDERED OR TREATED AS NON-ASBESTOS-CONTAINING.

Analyst: Jason W. Sutter

By: Kurt Kettler

VLAP Accreditation #1926, CA ELAP #1913, TX DOH #30-0094

342 EAST THOMAS ROAD SCOTTSDALE, ARIZONA 85251-7216 (602) 990-2069 FAX: (602) 990-8468