



STATE OF IOWA

CHESTER J. CULVER
GOVERNOR

DEPARTMENT OF PUBLIC DEFENSE
IOWA HOMELAND SECURITY AND
EMERGENCY MANAGEMENT DIVISION
DAVID L. MILLER, ADMINISTRATOR

PATTY JUDGE
LT. GOVERNOR

Historical and Architectural Reconnaissance Survey for 2008 Flood Projects in Waterloo, Black Hawk County

HADB 07-090

Surveyors: Marlys Svendsen & Justine Zimmer

Date Submitted: April 1, 2009; Revised 4/06/09

Waterloo, Black Hawk County

Reconnaissance Survey

Date: 4/1/2009; 4/06/09¹

Surveyors: Marlys Svendsen
& Justine Zimmer

i. Introduction and Purpose

In December 2008 Zimmer and Svendsen made a photographic inspection of approximately 562 addresses in Waterloo included on a combined list of pending FEMA projects in Waterloo² and all addresses listed on the Residential Substantial Damage Estimator (RSDE). The addresses were designated as either Emergency Health and Safety Demolition projects, 404 Hazard Mitigation Buy-Out projects, or did not have a project identified at the time the field inspection was completed. A follow-up research visit was completed on January 20, 2009.

The overall goal for the reconnaissance survey in Waterloo was to comply with Section 106 of the National Historic Preservation Act of 1966. The purpose of the reconnaissance survey was four fold:

- a. To determine whether the list appeared to include all pending properties.
- b. To determine whether or not any of the addresses were part of a potential NRHP eligible historic district.
- c. For potential mitigation purposes, to identify properties with a potential for architectural salvage.
- d. Also for mitigation purposes, to identify other potential measures that could be undertaken in the event a potential historic district was identified.

ii. Reconnaissance Survey

Zimmer and Svendsen completed a reconnaissance survey of properties located in residential neighborhoods scattered throughout Waterloo. The SHPO had previously completed no individual determinations of eligibility for Waterloo properties included on the combined list in these neighborhoods at the time of the reconnaissance survey. Zimmer and Svendsen also reviewed the locations of nearby properties with potential NRHP district eligibility and the overall potential for salvage for properties facing acquisition and/or potential demolition. The Area of Potential Effect (APE) was considered to include properties located along the facing blocks of each listed address so that potential districts could be evaluated. The status of contributing and noncontributing buildings within potential districts was evaluated regardless of the type of project being undertaken. It should be noted that

¹Revisions include correct HADB #07-090.

² From the 1763 Demolition Data Base as maintained by Kathy McCarty, Debris – Administrative Specialist, FEMA, AFO Cedar Rapids.

because the RSDE list was substantial, the reconnaissance survey included many addresses that had not yet been identified for FEMA projects.

Historical Background³

The village that would become Waterloo was originally established in 1851 as “Prairie Rapids Crossing.” Once a post office was established, the village took the name “Waterloo.” Two years later the town was surveyed and the following year in 1854 the plat was officially recorded. The following year, Waterloo was selected as the county seat for Black Hawk County. This decision coupled with the ready availability of water power and timber saw Waterloo poised to grow. Historian Barbara Beving Long summarized early growth well writing that “Between 1855 and 1858 thirteen plats were filed for sites in or near Waterloo. In some cases, their names reflected intended land use. Located in low land near the river, Butterfield's Timber Plat undoubtedly was for wood collection, while Mill Square was the launch point for one of the city's most significant ventures, milling. Railroad Addition, platted by the Dubuque & Pacific Railroad Company, was a harbinger of rail connections that came in 1860 and contributed significantly to subsequent development.”⁴

In 1860 a rail connection to points east was established when the Illinois Central reached Waterloo. Its arrival was accompanied by the establishment of the Illinois Central shops and roundhouse, an important employer and transportation factor in the decades to come. Robust growth in milling, manufacturing, jobbing, and retail commerce saw population increase from 2,334 at the end of the Civil War to 8,490 in 1895. Approximately 15 percent of the local population was composed of immigrant groups, primarily Germans by 1895.

Waterloo had been served by horse-drawn street cars since 1885 and in 1895 the street car service was reconfigured with electric powered lines operated by the Waterloo & Cedar Falls Rapid Transit Interurban Railway Company. The routes selected served existing neighborhoods but also gave rise to new street car suburbs and recreational neighborhoods associated with city parks, the Chautauqua grounds, and in one instance, an amusement park – Electric Park.

The combination of rail service and early industrial effort positioned Waterloo to become one of the state's leading manufacturing and commercial centers before World War I. Long notes that subdivision growth in the pre and post-1895 period reflected the city's overall industrial expansion. She writes that “Between 1854 and 1890 only thirty-seven plats were recorded in the city, many of them tiny subdivisions of a typical city block. In contrast, there were 156 subdivisions recorded in the expanded city from

³ The historical background information is largely drawn from two historical and architectural survey reports prepared for the City of Waterloo - *Waterloo Factory City of Iowa, Survey of Architecture and History* by Barbara Beving Long, Midwest Research, 1986 and *Architectural Survey of Waterloo, Iowa* by Karen Bode Baxter, 1995.

⁴Long, Chapter 1, p. 2.

1899 to 1915.”⁵ A major annexation completed in 1904 brought 16 square miles into the city including one of the new electric street car suburbs, the Sans Souci subdivision near Electric Park. Updates in fire service, municipal water service and major sewer service expansion also took place immediately before and after the turn of the 20th century.

Creative and successful efforts marked Waterloo’s attempts to industrialize after 1900. Boosters recruited new businesses, and local developers laid out residential divisions as factories were being planned and built. Long writes that from 1900 into the 1920s “Waterloo experienced a golden period of development. All of Iowa basked in the sunny economy, but Waterloo was especially blessed with bounty. Everything that boosters traditionally sought to improve – from factories to population to transportation routes and sewers – increased in the Factory City. Where in 1881 there were 28 factories in town, by 1914 144 provided employment. Eleven new ones started up in 1910 alone. And by 1928 the city had an estimated 7,000 factory workers.”⁶ Among the businesses to thrive were in the food processing sector that included meat packing (Rath Company), canning (Waterloo Canning Corporation), dairy product equipment and processing, and both milling and commercial baking; farm implement manufacturing (Deere & Company) and related engine and foundry work; and publishing. During these same pre-World War I decades, the excellent rail connections that supported industrial expansion, also made Waterloo an important wholesale jobbing center and regional retail center. Hundreds of jobs were held by commercial travelers, business owners, sales staff, and bank personnel. As a result of growth in both the industrial and commercial sectors of the economy, population regularly doubled every decade – from 6,674 in 1890 to 12,580 in 1900 and 26,693 in 1910. Southern Europeans and African-Americans were among the new immigrant groups in the post-1900 period.

Individual Resources:

Ten potential individually NRHP-eligible properties were identified from the list of 562 resources. They are scattered throughout the flood damaged areas of Waterloo near the Cedar River and low lying streets away from the river. They include properties dating from the turn of the 20th century through World War II. Building types include various vernacular single-family house types, several architect-designed large scale residences, and a few modified river front cottages. The three potential individually NRHP-eligible properties located in a historic district are discussed as a part of that neighborhood. The remaining 7 properties are listed below:

- ***House, 570 Cedar Bend Street*** (1918) – Classical Revival Style, 1-story single-family frame house with low-pitched hipped roof and low semi-circular roofed dormers; wide cornice with dentil molding; gabled projecting wings; paired square columns for the porte-cochere and entrance porch; enclosed porch/sun room with spindled balustrade; original 1/1 double-hung

⁵Ibid., Chapter 3, p. 41.

⁶Ibid., Chapter 4, p. 66.

windows and bay windows of various sizes – all with dentiled lintels; sidelights and pilasters for entrance surround; multi-bay garage with hipped tent-roof and eye-brown attic dormers. Significant under Criterion C.

- ***House, 641 Cedar Bend Street*** (1928) – Tudor Revival Cottage, 1½-story single-family brick house with moderate-pitched side-gable roof and contiguous gabled projecting entrance; mottled gray and reddish-brown brick for walls with cast stone trim; clapboard gabled ends (synthetic); stucco and half-timbering in front gable; exposed brick chimney with brick and stone pattern work is asymmetrically placed to left of entrance; segmental brick and stone arched entrance surround; original 6/1 and 8/8 double-hung windows on main floor with a multi-light pointed arched window in front gable. House plan is identical to adjacent frame house at 651 Cedar Bend Street (altered with synthetic finishes). Significant under Criterion C.
- ***House, 1815 Commercial Street*** (1901) – Vernacular Hipped Roof and Wing form; 1-story single-family frame cottage; moderate-pitched hip-roof with a gabled projecting wing; gabled wall dormer centered on front has boxed cornices typical of late 19th century forms in Waterloo; medium-width wood clapboard, corner board trim and wide cornices for walls and a parged stone foundation; small flat-roofed front entrance porch with turned porch posts and scroll-cut ornamentation; paneled entrance door; original 1/1 double-hung windows of various sizes. Significant under Criterion C.
- ***House, 108 Rhey Street*** (1929) – Vernacular Front-Gable Roof form; 1-story single-family brick cottage; moderate-pitched front-gable roof with no dormers; reddish brown colored brick walls and foundation; later entrance deck; segmental arched contrasting dark brown brick entrance surround; segmental arched window openings with original 1/1 double-hung windows. Nearly identical house at 120 Rhey Street. Significant under Criterion C.
- ***House, 116 Rhey Street*** (1914) – Vernacular American Four-Square form or locally called the “Commodious Box;” 2-story moderate-pitched bell-cast hipped roof with hipped attic dormers; narrow-width wood clapboard siding with wide water table and belt course; stone foundation; hipped roof front porch with stone foundation, battered piers, and closed clapboard-clad balustrade; original windows are 1/1 double-hung sash of various sizes and groupings; hipped roof oriel on side facades. Significant under Criterion C.
- ***House, 119 Rhey Street*** (1914) – Vernacular 1-story Hipped Roof form; single-family frame bungalow; moderate-pitched hip-roof with a recessed front porch; gabled wall dormer centered on front; medium-width wood clapboard, corner board trim and wide cornices for walls and a parged stone foundation; small flat-roofed front entrance porch with turned porch posts and scroll-cut ornamentation; paneled entrance door; original 1/1 double-hung windows of various sizes. Significant under Criterion C.

- ***House, 120 Rhey Street*** (1919) – Vernacular Front-Gable Roof form; 1-story single-family brick cottage; moderate-pitched front-gable roof with no dormers; reddish brown colored brick walls and brown colored brick foundation; later entrance deck; segmental arched openings for single and paired windows on front façade and single openings on side facades; 6/1 double-hung windows. Nearly identical house at 108 Rhey Street. Significant under Criterion C.

District Resources:

One potential NRHP-eligible historic district was identified among the 562 buildings reviewed. The *Sans Souci Historic District* includes 16 properties and extends along the east side of Sans Souci Drive, a private street, on San Souci Island. The houses range from 1 and 1½-story frame cottages converted from seasonal use to large, 2-story houses initially built for year-round occupancy. The house construction dates span four decades from 1901 to 1941.

Sans Souci Historic District

a. Area description:

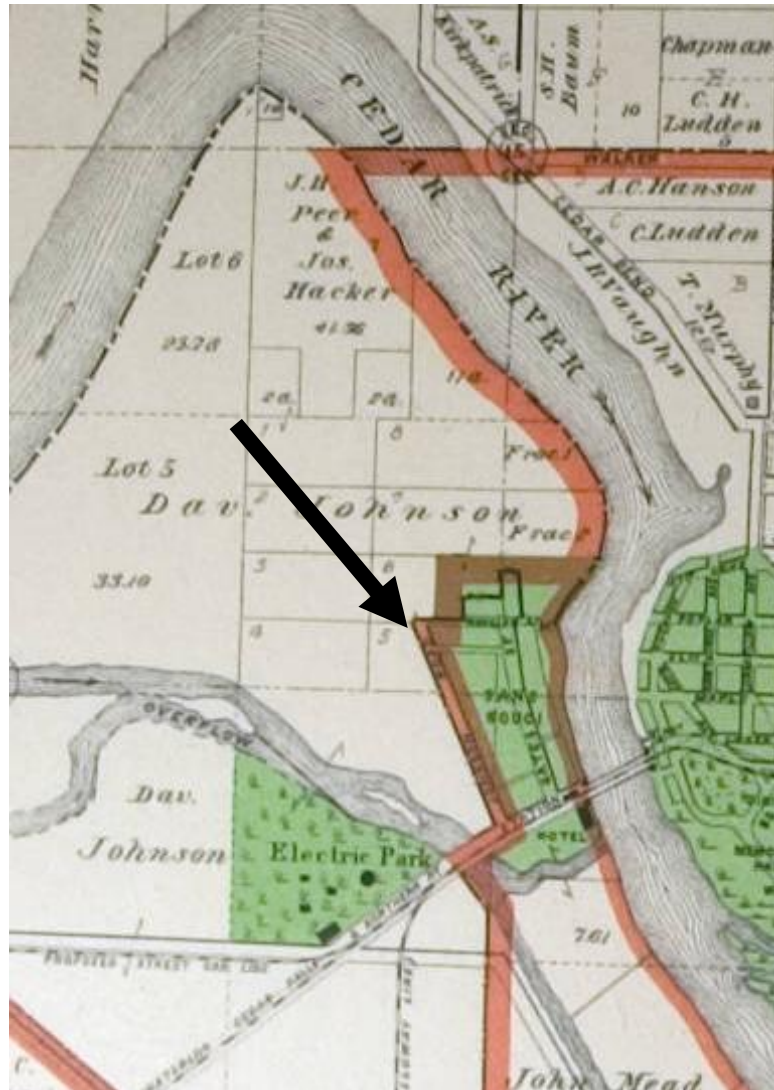
The *Sans Souci Historic District* is a linear residential neighborhood overlooking the Cedar River along the southeast edge of Sans Souci Island. The low-profile island comprises 160 acres of woodlands with the residential neighborhood confined to less than 10 percent of the island's land surface. Mature deciduous trees and landscaped gardens occupy the generally level terrain of the residential lots. A number of the lots have seasonal docks and piers extending into the river. The building lots are of various sizes with some houses densely spaced while others occupy large parcels with wide side yard setbacks. All of the lots are located on the east side of the road between Sans Souci Drive and the riverbank. A series of back lots along the west side of the drive contain a series of multi-unit garages that are outside of the boundaries of the potential historic district. Sans Souci Drive enters the island near the southeast end of the island just off Conger Street. A pair of matching stone pedestals marks the drive before the road jogs to the east and then turns northwest. The drive terminates in a cul-de-sac at the north end of the 16 house lots included in the historic district. A group of four small houses set on small lots on a section of Sans Souci Drive just west of the main road is excluded from the historic district. These houses (11, 15, 19, and 23 Sans Souci Drive) though built during the same period as other houses on the island are sufficiently different in level of integrity, scale, and design so as to not qualify for the NRHP as part of the *Sans Souci Historic District*.

b. Historical background:

The Sans Souci neighborhood was originally laid out as one of Waterloo's recreational neighborhoods shortly before the turn of the 20th century. The residential plat comprised only a small section of the 160-acre island and was located opposite another

recreational subdivision, Cedar River Park Addition. The Sans Souci neighborhood occupied a portion of Sans Souci Island located in the Cedar River upstream some distance from downtown Waterloo. It was located near two other important recreational attractions, Electric Park (on the west bank of the river along the route of the Waterloo & Cedar Falls Rapid Transit Interurban Railway) and the Sans Souci Hotel (1898, nonextant) located on the south side of the railway line on the southeastern point of

at:



Sans Souci Island, 1910 *Atlas of Black Hawk County, Iowa*. Des Moines, Iowa: The Iowa Publishing Company, 1910. "Iowa Digital Library," available online http://digital.lib.uiowa.edu/cdm4/index_maps.php?CISOROOT=/maps

Sans Souci Island. The streetcar company was the organizer for both recreational enterprises. The hotel was promoted by the company for its natural wooded site and for its "fine cuisine and good accommodation" in a "rural wonderland."

A homeowners association for residents of Sans Souci Drive was first organized by lumber dealer and developer Charles Bratnober, glove manufacturer George B. Rowell and others in 1897. A number of the early buildings erected on Sans Souci Drive were built as seasonal fishing cottages. As noted above, the island was partially annexed by the City of Waterloo in 1904 but municipal water service was not connected to the island until the 1920s. The balance of the Island was annexed in 1948. Long reports that in the 1950s, the Sans Souci Association acquired the balance of the island from descendants of its original landowners, David and Lucinda Johnson, in order to establish a bird sanctuary on the island.

The 1910 map at left shows the Sans Souci neighborhood with the street railway line forming its southern boundary. The hotel is south of the rail line and Electric Park lies to the west. Electric Park, contained a range of attractions common to an electric-powered amusement parks after the turn of the century including the "Spiral Thriller" roller coaster, various carnival rides, free boxing matches, a ball room, and popular picnic grounds. An advertisements in the *Waterloo Courier* in 1910 noted that the

Electric Park "included amusements of a lighter nature, calculated to catch the attention of all classes, including those who are wont to regard the Chautauqua program as rather heavy diet for the summer season."

The houses erected along Sans Souci Drive reflect a range of house types demonstrating the neighborhood's attraction as a summer resort area and later as a year-round residential community. River vistas saw most houses integrate important porches into their designs that faced the river rather than the street with sections of these outdoor living spaces screened and/or enclosed through the years. The largest residences were built after municipal water service was extended to the island in the 1920s. Good examples of Craftsman Style houses, Colonial Revival Style houses, and various vernacular cottage forms are found in the district. Half of the houses were built before World War I, none were constructed during the Great Depression, and one was completed on the eve of World War II.

Sans Souci Historic District

- House, 106 Sans Souci Dr (1911), Contributing
- House, 110 Sans Souci Dr (1918), Contributing
- House, 118 Sans Souci Dr (1901), Contributing
- House, 122 Sans Souci Dr (1914), Contributing
- House, 128 Sans Souci Dr (1904), Contributing
- House, 132 Sans Souci Dr (1914), Contributing
- House, 136 Sans Souci Dr (1922), Contributing
- House, 140 Sans Souci Dr (1920), Contributing
- House, 148 Sans Souci Dr (1908), Contributing
- House, 158 Sans Souci Dr (1921), Individually NRHP-Eligible and Contributing
- House, 160 Sans Souci Dr (1912), Contributing
- House, 164 Sans Souci Dr (1922), Contributing
- House, 168 Sans Souci Dr (1919), Contributing
- House, 176 Sans Souci Dr (1917), Individually NRHP-Eligible and Contributing
- House, 180 Sans Souci Dr (1914), Contributing
- House, 186 Sans Souci Dr (1941), Individually NRHP-Eligible and Contributing



Sans Souci Historic District looking north at entrance

Sans Souci Historic District looking west across the Cedar River from Riverside Drive



Proposed boundaries for the *Sans Souci Historic District* include the slightly irregular edge of the Cedar River on the east, Conger Street on the south, and the centerline of the 100 block of Sans Souci Drive on the west. The northern edge extends from the north edge of the cul-de-sac to the Cedar River. Additional research regarding the potential presence of historic archaeological resources associated with the Sans Souci Hotel will need to be conducted to determine if the southern boundary should be extended across Conger Street to include the southeast point of the island where the hotel was previously sited.

c. Significance

In the opinion of the surveyors, there are 10 potentially individual NRHP-eligible properties in Waterloo and one potential NRHP-eligible historic district containing 16 resources (including 3 potentially individually NRHP-eligible resources, 12 contributing, and one noncontributing). The individually eligible properties and the district are significant under Criterion C and the district under Criterion A.

d. Sources

Baxter, Karen Bode. *Architectural Survey of Waterloo, Iowa*. City of Waterloo, 1995.

Hartman, John. *History of Black Hawk County, Iowa and Its People, Volumes I and II*. Chicago: The S.J. Clarke Publishing Company, 1915.

The History of Black Hawk County, Iowa. Chicago: Western Historical Company, 1878.

Interview with Adam Poll, Associate Planner, City of Waterloo, March 2009.

Long, Barbara Beving, Midwest Research. *Waterloo Factory City of Iowa, Survey of Architecture and History*. City of Waterloo, 1986.

Riley, Glenda. *Cities on the Cedar: A Portrait of Waterloo, Waterloo, and Black Hawk County*. Parkersburg, Iowa: Mid-Prairie Books, 1988.

Waterloo City and Neighborhood Maps, City of Waterloo, Community Planning & Development Department, provided March 31, 2009.

iii. Mitigation Recommendations

a. Salvage Potential

Though the Waterloo property list showed relatively few NRHP-eligible properties, an informal review was still made for potential salvage. Exterior inspections showed several buildings with potential and several worthy of whole-house salvage through moves. Still others may be worthy of salvage based on interior inspections. It is recommended that before 404 projects begin, a specific salvage inspection be made to determine the feasibility of completing a salvage effort for both eligible and non-eligible properties.

In some cases, salvageable elements may include structural materials such as full-dimension lumber, foundation block and stone, or locally produced brick. In other cases, porch posts, balusters, columns, piers, door hoods, and brackets may be available for salvage. In other instances, worthy salvage may be limited to still unidentified interior building elements. Efforts should be made to support and encourage salvage by either a not-for-profit organization – existing or newly established, or another affiliate or designee of the applicant, the City of Waterloo. Important side-effects of a salvage operation will be 1) support for sympathetic rehabilitation efforts for housing stock in surviving older neighborhoods located elsewhere in Waterloo and 2) an important reduction in the amount of reusable building materials entering landfill sites. The concept of a well thought out salvage program versus debris removal makes common sense. The applicant could be encouraged to participate in such a program to avoid

permanent loss of significant architectural materials by using post-disaster salvage operations in communities like New Orleans as program models.

A second type of salvage to be considered for a limited number of properties involves whole-house salvage or house moving. Once property ownership for houses transfers to the applicant, systematic investigation of house interiors will be possible. Buildings suitable for salvage most likely will be of frame construction, have detachable additions, and retain intact original exterior finishes presently or beneath synthetic sidings. A systematic interior and exterior inspection will need to be made to determine suitability for moving and rehabilitation costs. Due to limitations for reconnaissance survey work and lack of accessibility to building interiors, such an investigation was not undertaken by the IHSEMD surveyor team.

b. Intensive Surveys

Completion of intensive survey work including individual Iowa Site Inventory Forms for all potentially individually eligible resources and contributing resources in the *Sans Souci Historic District* is recommended. This work will be completed by the IHSEMD survey team on behalf of the applicant with copies placed in the Iowa State Inventory of the State Historical Society of Iowa in Des Moines and with the City of Waterloo Certified Local Government.

iv. Property List for Waterloo, Black Hawk County

The property list beginning on the following page for Waterloo contains the addresses of 562 buildings, their date of construction if known, the surveyor's opinion of individual eligibility, the surveyor's opinion of district eligibility, the SHPO review status, the SHPO opinion of eligibility, and the FEMA program designation where applicable.

Comprehensive List of FEMA and Non-FEMA Program Properties Reviewed in Waterloo, Black Hawk County

Iowa Inventory Number	Street Number	Street	Year Built	FEMA Program	SHPO Reviewed	SHPO DOE	Surveyor Opinion - Individually Eligible	Surveyor Opinion - District Eligible	Surveyor Opinion District Status - Contributing Or Noncontributing
-	175	Belle St	2007	-	No	-	No	-	-
-	191	Belle St	1998	-	No	-	No	-	-
-	204	Belle St	1958	-	No	-	No	-	-
-	205	Belle St	1957	-	No	-	No	-	-

Iowa Inventory Number	Street Number	Street	Year Built	FEMA Program	SHPO Reviewed	SHPO DOE	Surveyor Opinion - Individually Eligible	Surveyor Opinion - District Eligible	Surveyor Opinion District Status - Contributing Or Noncontributing
-	209	Belle St	1959	-	No	-	No	-	-
-	213	Belle St	1954	-	No	-	No	-	-
-	301	Belle St	1961	-	No	-	No	-	-
-	314	Belle St	1961	-	No	-	No	-	-
-	315	Belle St	1965	-	No	-	No	-	-
-	318	Belle St	1961	-	No	-	No	-	-
-	319	Belle St	1965	-	No	-	No	-	-
-	321	Belle St	1965	-	No	-	No	-	-
-	322	Belle St	1961	-	No	-	No	-	-
-	402	Belle St	1961	-	No	-	No	-	-
-	403	Belle St	1961	-	No	-	No	-	-
-	408	Belle St	1963	-	No	-	No	-	-
-	415	Belle St	1962	-	No	-	No	-	-
-	420	Belle St	1962	-	No	-	No	-	-
-	421	Belle St	1962	-	No	-	No	-	-
-	426	Belle St	1961	-	No	-	No	-	-
-	427	Belle St	1961	-	No	-	No	-	-
-	504	Belle St	1962	-	No	-	No	-	-
-	508	Belle St	1962	-	No	-	No	-	-
-	513	Belle St	1961	-	No	-	No	-	-
-	519	Belle St	1962	-	No	-	No	-	-
-	523	Belle St	1962	-	No	-	No	-	-
-	527	Belle St	1962	-	No	-	No	-	-
-	533	Belle St	1962	-	No	-	No	-	-
-	606	Belle St	1962	-	No	-	No	-	-
-	1069	Belle St	1967	-	No	-	No	-	-
-	320	Black Hawk Rd	1916	-	No	-	No	-	-
-	324	Black Hawk Rd	1962	-	No	-	No	-	-
-	330	Black Hawk Rd	1939	-	No	-	No	-	-
-	402	Black Hawk Rd	1921	-	No	-	No	-	-

Iowa Inventory Number	Street Number	Street	Year Built	FEMA Program	SHPO Reviewed	SHPO DOE	Surveyor Opinion - Individually Eligible	Surveyor Opinion - District Eligible	Surveyor Opinion District Status - Contributing Or Noncontributing
-	404	Black Hawk Rd	1954	-	No	-	No	-	-
-	410	Black Hawk Rd	1954	-	No	-	No	-	-
-	412	Black Hawk Rd	1961	-	No	-	No	-	-
-	416	Black Hawk Rd	1961	-	No	-	No	-	-
-	424	Black Hawk Rd	1914	-	No	-	No	-	-
-	704	Black Hawk Rd	1966	-	No	-	No	-	-
-	1381	Black Hawk Rd	1976	-	No	-	No	-	-
-	1405	Black Hawk Rd	1978	-	No	-	No	-	-
-	1414	Black Hawk Rd	1977	-	No	-	No	-	-
-	1415	Black Hawk Rd	1976	-	No	-	No	-	-
-	1520	Black Hawk Rd	1976	-	No	-	No	-	-
-	1524	Black Hawk Rd	1970	-	No	-	No	-	-
-	1720	Black Hawk Rd	1920	-	No	-	No	-	-
-	1502	Black Hawk St	1971	-	No	-	No	-	-
-	1514	Black Hawk St	1890	-	No	-	No	-	-
-	1520	Black Hawk St	1890	-	No	-	No	-	-
-	1526	Black Hawk St	1890	-	No	-	No	-	-
-	1707	Black Hawk St	1906	-	No	-	No	-	-
-	1712	Black Hawk St	1930	-	No	-	No	-	-
-	1728	Black Hawk St	1924	-	No	-	No	-	-
-	1807	Black Hawk St	1930	-	No	-	No	-	-
-	1809	Black Hawk St	1915	-	No	-	No	-	-
-	1823	Black Hawk St	1901	-	No	-	No	-	-
-	1827	Black Hawk St	1896	-	No	-	No	-	-
07-03038	114	Blackwood	1941	404	No	-	No	-	-
-	2240	Byron Ave	1940	-	No	-	No	-	-
-	2245	Byron Ave	1941	-	No	-	No	-	-
-	2250	Byron Ave	1940	-	No	-	No	-	-
-	2256	Byron Ave	1948	-	No	-	No	-	-
-	2259	Byron Ave	1941	-	No	-	No	-	-

Iowa Inventory Number	Street Number	Street	Year Built	FEMA Program	SHPO Reviewed	SHPO DOE	Surveyor Opinion - Individually Eligible	Surveyor Opinion - District Eligible	Surveyor Opinion District Status - Contributing Or Noncontributing
-	2265	Byron Ave	1947	-	No	-	No	-	-
-	2266	Byron Ave	1952	-	No	-	No	-	-
-	2270	Byron Ave	1940	-	No	-	No	-	-
-	100	California St	1960	-	No	-	No	-	-
-	512	Cedar Bend St	1927	-	No	-	No	-	-
07-03038	570	Cedar Bend St	1918	-	Yes	Yes	Yes	-	-
-	601	Cedar Bend St	1930	-	No	-	No	-	-
-	604	Cedar Bend St	1940	-	No	-	No	-	-
-	615	Cedar Bend St	1926	-	No	-	No	-	-
-	620	Cedar Bend St	1949	-	No	-	No	-	-
-	621	Cedar Bend St	1946	-	No	-	No	-	-
-	632	Cedar Bend St	1949	-	No	-	No	-	-
-	640	Cedar Bend St	1940	-	No	-	No	-	-
-	641	Cedar Bend St	1928	-	No	-	Yes	-	-
-	657	Cedar Bend St	1929	-	No	-	No	-	-
-	700	Cedar Bend St	1955	-	No	-	No	-	-
-	701	Cedar Bend St	1929	-	No	-	No	-	-
-	1312	Cedar Bend St	1919	-	No	-	Unidentified	-	-
-	1322	Cedar Bend St	1937	-	No	-	Unidentified	-	-
-	1332	Cedar Bend St	1914	-	No	-	Unidentified	-	-
-	2853	Cedar Terrace Dr	1978	-	No	-	No	-	-
-	2949	Cedar Terrace Dr	1952	-	No	-	No	-	-
-	2971	Cedar Terrace Dr	1972	-	No	-	No	-	-
-	3027	Cedar Terrace Dr	1940	-	No	-	No	-	-
-	3041	Cedar Terrace Dr	1963	-	No	-	No	-	-
-	3055	Cedar Terrace Dr	1957	-	No	-	No	-	-
-	1401	Commercial St	1908	-	No	-	No	-	-
-	1411	Commercial St	1940	-	No	-	No	-	-
-	1412	Commercial St	1905	-	No	-	No	-	-
-	1414	Commercial St	1905	-	No	-	No	-	-

Iowa Inventory Number	Street Number	Street	Year Built	FEMA Program	SHPO Reviewed	SHPO DOE	Surveyor Opinion - Individually Eligible	Surveyor Opinion - District Eligible	Surveyor Opinion District Status - Contributing Or Noncontributing
-	1420	Commercial St	1899	-	No	-	No	-	-
-	1421	Commercial St	1918	-	No	-	No	-	-
-	1422	Commercial St	1884	-	No	-	No	-	-
-	1426	Commercial St	1900	-	No	-	No	-	-
-	1427	Commercial St	1915	-	No	-	No	-	-
-	1429	Commercial St	1915	-	No	-	No	-	-
-	1430	Commercial St	1900	-	No	-	No	-	-
-	1619	Commercial St	1896	-	No	-	No	-	-
-	1708	Commercial St	1907	-	No	-	No	-	-
-	1709	Commercial St	1906	-	No	-	No	-	-
-	1710	Commercial St	1907	-	No	-	No	-	-
-	1715	Commercial St	1920	-	No	-	No	-	-
-	1716	Commercial St	1903	-	No	-	No	-	-
-	1801	Commercial St	1896	-	No	-	No	-	-
-	1809	Commercial St	1901	-	No	-	No	-	-
07-03374	1815	Commercial St	1901	-	No	-	Yes	-	-
-	1820	Commercial St	1911	-	No	-	No	-	-
-	1827	Commercial St	1903	-	No	-	No	-	-
-	1828	Commercial St	1939	-	No	-	No	-	-
-	1907	Commercial St	1891	-	No	-	No	-	-
-	1915	Commercial St	1891	-	No	-	No	-	-
-	2518	Cooley St	1935	-	No	-	No	-	-
-	2528	Cooley St	1935	-	No	-	No	-	-
-	203	Crestridge Dr	1964	-	No	-	No	-	-
-	206	Crestridge Dr	1964	-	No	-	No	-	-
-	207	Crestridge Dr	1963	-	No	-	No	-	-
-	215	Crestridge Dr	1963	-	No	-	No	-	-
-	223	Crestridge Dr	1964	-	No	-	No	-	-
-	303	Crestridge Dr	1963	-	No	-	No	-	-
-	309	Crestridge Dr	1964	-	No	-	No	-	-

Iowa Inventory Number	Street Number	Street	Year Built	FEMA Program	SHPO Reviewed	SHPO DOE	Surveyor Opinion - Individually Eligible	Surveyor Opinion - District Eligible	Surveyor Opinion District Status - Contributing Or Noncontributing
-	310	Crestridge Dr	1963	-	No	-	No	-	-
-	313	Crestridge Dr	1963	-	No	-	No	-	-
-	316	Crestridge Dr	1964	-	No	-	No	-	-
-	319	Crestridge Dr	1963	-	No	-	No	-	-
-	322	Crestridge Dr	1963	-	No	-	No	-	-
-	325	Crestridge Dr	1963	-	No	-	No	-	-
-	328	Crestridge Dr	1964	-	No	-	No	-	-
-	331	Crestridge Dr	1963	-	No	-	No	-	-
-	334	Crestridge Dr	1964	-	No	-	No	-	-
-	337	Crestridge Dr	1963	-	No	-	No	-	-
-	338	Crestridge Dr	1963	-	No	-	No	-	-
-	341	Crestridge Dr	1964	-	No	-	No	-	-
-	342	Crestridge Dr	1964	-	No	-	No	-	-
-	431	Crestridge Dr	1962	-	No	-	No	-	-
-	437	Crestridge Dr	1962	-	No	-	No	-	-
-	314	Dunham Pl	1935	-	No	-	No	-	-
-	325	Dunham Pl	1899	-	No	-	No	-	-
-	402	Dunham Pl	1914	-	No	-	No	-	-
-	416	Dunham Pl	1914	-	No	-	No	-	-
-	420	Dunham Pl	1914	-	No	-	No	-	-
-	2201	Easton Ave	1954	-	No	-	No	-	-
-	208	Eighmey St	1910	-	No	-	No	-	-
-	214	Eighmey St	1918	-	No	-	No	-	-
-	400	Elm St	1899	-	No	-	No	-	-
-	402	Elm St	1894	-	No	-	No	-	-
-	408	Elm St	1889	-	No	-	No	-	-
-	409	Elm St	1914	-	No	-	No	-	-
-	412	Elm St	1900	-	No	-	No	-	-
-	415	Elm St	1917	-	No	-	No	-	-
-	417	Elm St	1904	-	No	-	No	-	-

Iowa Inventory Number	Street Number	Street	Year Built	FEMA Program	SHPO Reviewed	SHPO DOE	Surveyor Opinion - Individually Eligible	Surveyor Opinion - District Eligible	Surveyor Opinion District Status - Contributing Or Noncontributing
-	721	Englewood Ave	1941	-	No	-	No	-	-
-	722	Englewood Ave	1926	-	No	-	No	-	-
-	727	Englewood Ave	1929	-	No	-	No	-	-
-	728	Englewood Ave	1961	-	No	-	No	-	-
-	732	Englewood Ave	1938	-	No	-	No	-	-
-	736	Englewood Ave	1958	-	No	-	No	-	-
-	739	Englewood Ave	1901	-	No	-	No	-	-
-	740	Englewood Ave	1909	-	No	-	No	-	-
-	742	Englewood Ave	1938	-	No	-	No	-	-
-	743	Englewood Ave	1931	-	No	-	No	-	-
-	800	Englewood Ave	1955	-	No	-	No	-	-
-	810	Englewood Ave	1954	-	No	-	No	-	-
-	812	Englewood Ave	1954	-	No	-	No	-	-
-	815	Englewood Ave	1946	-	No	-	No	-	-
-	816	Englewood Ave	1954	-	No	-	No	-	-
-	817	Englewood Ave	1959	-	No	-	No	-	-
-	826	Englewood Ave	1947	-	No	-	No	-	-
-	831	Englewood Ave	1954	-	No	-	No	-	-
-	835	Englewood Ave	1941	-	No	-	No	-	-
-	202	Fairfield St	1941	-	No	-	No	-	-
-	203	Fairfield St	1941	-	No	-	No	-	-
-	1804	Falls Ave	1910	-	No	-	No	-	-
-	1812	Falls Ave	1941	-	No	-	No	-	-
-	106	Fletcher Ave	1939	-	No	-	No	-	-
-	5037	Foulk Rd	1968	-	No	-	No	-	-
-	5050	Foulk Rd	1968	-	No	-	No	-	-
-	5051	Foulk Rd	1969	-	No	-	No	-	-
-	5061	Foulk Rd	1968	-	No	-	No	-	-
-	5067	Foulk Rd	1968	-	No	-	No	-	-
-	5072	Foulk Rd	1967	-	No	-	No	-	-

Iowa Inventory Number	Street Number	Street	Year Built	FEMA Program	SHPO Reviewed	SHPO DOE	Surveyor Opinion - Individually Eligible	Surveyor Opinion - District Eligible	Surveyor Opinion District Status - Contributing Or Noncontributing
-	5073	Foulk Rd	1968	-	No	-	No	-	-
-	5129	Foulk Rd	1968	-	No	-	No	-	-
-	5130	Foulk Rd	1966	-	No	-	No	-	-
-	5137	Foulk Rd	1965	-	No	-	No	-	-
-	5142	Foulk Rd	1968	-	No	-	No	-	-
-	5147	Foulk Rd	1965	-	No	-	No	-	-
-	5154	Foulk Rd	1967	-	No	-	No	-	-
-	5164	Foulk Rd	1967	-	No	-	No	-	-
-	5239	Foulk Rd	1964	-	No	-	No	-	-
-	5251	Foulk Rd	1962	-	No	-	No	-	-
-	235	Glendale St	1947	-	No	-	No	-	-
-	248	Glendale St	1926	-	No	-	No	-	-
-	300	Glendale St	1947	-	No	-	No	-	-
-	303	Glendale St	1914	-	No	-	No	-	-
-	308	Glendale St	1929	-	No	-	No	-	-
-	309	Glendale St	1911	-	No	-	No	-	-
-	312	Glendale St	1936	-	No	-	No	-	-
-	317	Glendale St	1911	-	No	-	No	-	-
-	323	Glendale St	1911	-	No	-	No	-	-
-	325	Glendale St	1941	-	No	-	No	-	-
-	335	Glendale St	1911	-	No	-	No	-	-
-	341	Glendale St	1909	-	No	-	No	-	-
-	128	Greenwood Ave	1920	404	No	-	No	-	-
-	136	Greenwood Ave	1956	404	No	-	No	-	-
-	140	Greenwood Ave	1928	404	No	-	No	-	-
-	142	Greenwood Ave	1920	404	No	-	No	-	-
-	146	Greenwood Ave	N/A	-	No	-	No	-	-
-	148	Greenwood Ave	1928	404	No	-	No	-	-
-	149	Greenwood Ave	1940	404	No	-	No	-	-
-	151	Greenwood Ave	1920	-	No	-	No	-	-

Iowa Inventory Number	Street Number	Street	Year Built	FEMA Program	SHPO Reviewed	SHPO DOE	Surveyor Opinion - Individually Eligible	Surveyor Opinion - District Eligible	Surveyor Opinion District Status - Contributing Or Noncontributing
-	152	Greenwood Ave	1935	-	No	-	No	-	-
-	159	Greenwood Ave	1941	404	No	-	No	-	-
-	160a	Greenwood Ave	1920	-	No	-	No	-	-
-	160b	Greenwood Ave	1920	-	No	-	No	-	-
-	160c	Greenwood Ave	1920	-	No	-	No	-	-
-	162	Greenwood Ave	1934	404	No	-	No	-	-
-	188	Greenwood Ave	1920	404	No	-	No	-	-
-	202	Greenwood Ave	1938	-	No	-	No	-	-
-	204	Greenwood Ave	1938	-	No	-	No	-	-
-	206	Greenwood Ave	1928	404	No	-	No	-	-
-	208	Greenwood Ave	1928	-	No	-	No	-	-
-	212	Greenwood Ave	1937	404	No	-	No	-	-
-	218	Greenwood Ave	1973	404	No	-	No	-	-
07-04762	222	Greenwood Ave	1930	404	Yes	No	No	-	-
-	234	Greenwood Ave	1951	404	No	-	No	-	-
-	110	Hartman Ave	1917	-	No	-	No	-	-
-	140	Hartman Ave	1935	-	No	-	No	-	-
-	115	Harwood Ave	1939	-	No	-	No	-	-
-	121	Harwood Ave	1910	-	No	-	No	-	-
-	129	Harwood Ave	1963	-	No	-	No	-	-
-	205	Harwood Ave	1911	-	No	-	No	-	-
-	211	Harwood Ave	1919	-	No	-	No	-	-
-	215	Harwood Ave	1965	-	No	-	No	-	-
-	217	Harwood Ave	1955	-	No	-	No	-	-
-	223	Harwood Ave	1955	-	No	-	No	-	-
-	227	Harwood Ave	1950	-	No	-	No	-	-
-	2228	Hawthorne Ave	1939	-	No	-	No	-	-
-	2306	Hawthorne Ave	1939	-	No	-	No	-	-
-	2312	Hawthorne Ave	1939	-	No	-	No	-	-
-	2316	Hawthorne Ave	1944	-	No	-	No	-	-

Iowa Inventory Number	Street Number	Street	Year Built	FEMA Program	SHPO Reviewed	SHPO DOE	Surveyor Opinion - Individually Eligible	Surveyor Opinion - District Eligible	Surveyor Opinion District Status - Contributing Or Noncontributing
-	200	Hogle St	1915	-	No	-	No	-	-
-	206	Hogle St	1923	-	No	-	No	-	-
-	212	Hogle St	1920	-	No	-	No	-	-
-	228	Hogle St	1915	-	No	-	No	-	-
-	242	Hogle St	1924	-	No	-	No	-	-
-	246	Hogle St	1922	-	No	-	No	-	-
-	317	Indiana St	1961	-	No	-	No	-	-
-	323	Indiana St	1938	-	No	-	No	-	-
-	327	Indiana St	1941	-	No	-	No	-	-
-	333	Indiana St	1937	-	No	-	No	-	-
-	343	Indiana St	1917	-	No	-	No	-	-
-	353	Indiana St	1954	-	No	-	No	-	-
-	363	Indiana St	1922	-	No	-	No	-	-
-	403	Indiana St	1936	-	No	-	No	-	-
-	409	Indiana St	1936	-	No	-	No	-	-
-	415	Indiana St	1938	-	No	-	No	-	-
-	422	James St	1948	-	No	-	No	-	-
-	432	James St	1945	-	No	-	No	-	-
-	700	Knoll Ave	1954	-	No	-	No	-	-
-	704	Knoll Ave	1919	-	No	-	No	-	-
-	714	Knoll Ave	1952	-	No	-	No	-	-
-	719	Knoll Ave	1955	-	No	-	No	-	-
-	720	Knoll Ave	1953	-	No	-	No	-	-
-	723	Knoll Ave	1963	-	No	-	No	-	-
-	727	Knoll Ave	1935	-	No	-	No	-	-
-	734	Knoll Ave	1940	-	No	-	No	-	-
-	742	Knoll Ave	1938	-	No	-	No	-	-
-	745	Knoll Ave	1944	-	No	-	No	-	-
-	831	Knoll Ave	1947	-	No	-	No	-	-
-	835	Knoll Ave	1958	-	No	-	No	-	-

Iowa Inventory Number	Street Number	Street	Year Built	FEMA Program	SHPO Reviewed	SHPO DOE	Surveyor Opinion - Individually Eligible	Surveyor Opinion - District Eligible	Surveyor Opinion District Status - Contributing Or Noncontributing
-	836	Knoll Ave	1955	-	No	-	No	-	-
-	839	Knoll Ave	1961	-	No	-	No	-	-
-	841	Knoll Ave	1935	-	No	-	No	-	-
-	844	Knoll Ave	1955	-	No	-	No	-	-
-	847	Knoll Ave	1929	-	No	-	No	-	-
-	1617	Lafayette St	1919	-	No	-	No	-	-
-	1629	Lafayette St	1939	-	No	-	No	-	-
-	1633	Lafayette St	1939	-	No	-	No	-	-
-	1637	Lafayette St	1939	-	No	-	No	-	-
-	1642	Lafayette St	1914	-	No	-	No	-	-
-	1701	Lafayette St	1904	-	No	-	No	-	-
-	1708	Lafayette St	1914	-	No	-	No	-	-
-	1731	Lafayette St	1942	-	No	-	No	-	-
-	1735	Lafayette St	1914	-	No	-	No	-	-
-	201	Lamont St	1954	-	No	-	No	-	-
-	210	Lamont St	1914	-	No	-	No	-	-
-	215	Lamont St	1926	-	No	-	No	-	-
-	216	Lamont St	1954	-	No	-	No	-	-
-	217	Lamont St	1954	-	No	-	No	-	-
-	303	Lamont St	1954	-	No	-	No	-	-
-	304	Lamont St	1954	-	No	-	No	-	-
-	307	Lamont St	1954	-	No	-	No	-	-
-	311	Lamont St	1904	-	No	-	No	-	-
-	312	Lamont St	1954	-	No	-	No	-	-
-	323	Lamont St	1906	-	No	-	No	-	-
-	324	Lamont St	1954	-	No	-	No	-	-
-	330	Lamont St	1955	-	No	-	No	-	-
-	333	Lamont St	1947	-	No	-	No	-	-
-	337	Lamont St	1952	-	No	-	No	-	-
-	340	Lamont St	1954	-	No	-	No	-	-

Iowa Inventory Number	Street Number	Street	Year Built	FEMA Program	SHPO Reviewed	SHPO DOE	Surveyor Opinion - Individually Eligible	Surveyor Opinion - District Eligible	Surveyor Opinion District Status - Contributing Or Noncontributing
-	343	Lamont St	1952	-	No	-	No	-	-
-	344	Lamont St	1952	-	No	-	No	-	-
-	348	Lamont St	1910	-	No	-	No	-	-
-	349	Lamont St	1951	-	No	-	No	-	-
-	361	Lamont St	1956	-	No	-	No	-	-
-	1551	Lark Ln	1981	-	No	-	No	-	-
-	1552	Lark Ln	1999	-	No	-	No	-	-
-	1601	Lark Ln	1981	-	No	-	No	-	-
-	1608	Lark Ln	1981	-	No	-	No	-	-
-	1618	Lark Ln	1999	-	No	-	No	-	-
-	1621	Lark Ln	1981	-	No	-	No	-	-
-	1624	Lark Ln	1981	-	No	-	No	-	-
-	1627	Lark Ln	1981	-	No	-	No	-	-
-	1631	Lark Ln	1981	-	No	-	No	-	-
-	1638	Lark Ln	1981	-	No	-	No	-	-
-	1645	Lark Ln	1981	-	No	-	No	-	-
-	1651	Lark Ln	2000	-	No	-	No	-	-
-	1719	Lark Ln	1981	-	No	-	No	-	-
-	1734	Lark Ln	2006	-	No	-	No	-	-
-	1637 & 1639	Lark Ln	1980	-	No	-	No	-	-
-	321	Leonard Ave	1951	-	No	-	No	-	-
-	325	Leonard Ave	1945	-	No	-	No	-	-
-	2235	Lincoln St	1965	-	No	-	No	-	-
-	2235	Lincoln St	1965	-	No	-	No	-	-
-	127	Linden Ave	1930	-	No	-	No	-	-
-	129	Linden Ave	1941	-	No	-	No	-	-
-	200	Linden Ave	1913	-	No	-	No	-	-
-	205	Linden Ave	1919	-	No	-	No	-	-
-	211	Linden Ave	1919	-	No	-	No	-	-
-	213	Linden Ave	1924	-	No	-	No	-	-

Iowa Inventory Number	Street Number	Street	Year Built	FEMA Program	SHPO Reviewed	SHPO DOE	Surveyor Opinion - Individually Eligible	Surveyor Opinion - District Eligible	Surveyor Opinion District Status - Contributing Or Noncontributing
-	217	Linden Ave	1922	-	No	-	No	-	-
-	221	Linden Ave	1914	-	No	-	No	-	-
-	514	Longfellow Ave	1916	-	No	-	No	-	-
-	526	Longfellow Ave	1947	-	No	-	No	-	-
-	729	Longfellow Dr	1946	-	No	-	No	-	-
-	1331	Magnolia Pkwy	1935	-	No	-	No	-	-
-	1401	Mulberry St	1914	-	No	-	No	-	-
-	1405	Mulberry St	1914	-	No	-	No	-	-
-	1509	Mulberry St	1895	-	No	-	No	-	-
-	1603	Mulberry St	1927	-	No	-	No	-	-
-	1611	Mulberry St	1935	-	No	-	No	-	-
-	1615	Mulberry St	1938	-	No	-	No	-	-
-	215	N Hackett Rd	1941	-	No	-	No	-	-
-	216	N Hackett Rd	1963	-	No	-	No	-	-
-	221	N Hackett Rd	1943	-	No	-	No	-	-
-	227	N Hackett Rd	1948	-	No	-	No	-	-
-	233	N Hackett Rd	1948	-	No	-	No	-	-
-	247	N Hackett Rd	1968	-	No	-	No	-	-
-	257	N Hackett Rd	1930	-	No	-	No	-	-
-	302	N Hackett Rd	1929	404	No	-	No	-	-
-	329	Nevada St	1925	-	No	-	No	-	-
-	342	Nevada St	1940	-	No	-	No	-	-
-	1100	Newton St	1947	-	No	-	No	-	-
-	1106	Newton St	1942	-	No	-	No	-	-
-	1111	Newton St	1919	-	No	-	No	-	-
-	1112	Newton St	1947	-	No	-	No	-	-
-	1115	Newton St	1949	-	No	-	No	-	-
-	1117	Newton St	1928	-	No	-	No	-	-
-	1118	Newton St	1942	-	No	-	No	-	-
-	1119	Newton St	1947	-	No	-	No	-	-

Iowa Inventory Number	Street Number	Street	Year Built	FEMA Program	SHPO Reviewed	SHPO DOE	Surveyor Opinion - Individually Eligible	Surveyor Opinion - District Eligible	Surveyor Opinion District Status - Contributing Or Noncontributing
-	1122	Newton St	1942	-	No	-	No	-	-
-	1125	Newton St	1947	-	No	-	No	-	-
-	1127	Newton St	1946	-	No	-	No	-	-
-	1128	Newton St	1942	-	No	-	No	-	-
-	1129	Newton St	1929	-	No	-	No	-	-
-	1132	Newton St	1929	-	No	-	No	-	-
-	1139	Newton St	1947	-	No	-	No	-	-
-	1142	Newton St	1955	-	No	-	No	-	-
-	128	Niagra Dr	1978	-	No	-	No	-	-
-	138	Niagra Dr	1978	-	No	-	No	-	-
-	105	Oakridge Rd	1965	-	No	-	No	-	-
-	109	Oakridge Rd	1964	-	No	-	No	-	-
-	115	Oakridge Rd	1964	-	No	-	No	-	-
-	131	Oakridge Rd	1967	-	No	-	No	-	-
-	155	Oakridge Rd	1965	-	No	-	No	-	-
-	171	Oakridge Rd	1966	-	No	-	No	-	-
-	217	Oakridge Rd	1969	-	No	-	No	-	-
-	242	Oakridge Rd	1969	-	No	-	No	-	-
-	1508	Oriole Ave	1977	-	No	-	No	-	-
-	1514	Oriole Ave	1980	-	No	-	No	-	-
-	1515	Oriole Ave	1980	-	No	-	No	-	-
-	1520	Oriole Ave	1981	-	No	-	No	-	-
-	1525	Oriole Ave	1978	-	No	-	No	-	-
-	1532	Oriole Ave	1979	-	No	-	No	-	-
-	1539	Oriole Ave	1977	-	No	-	No	-	-
-	1540	Oriole Ave	1977	-	No	-	No	-	-
-	1546	Oriole Ave	1979	-	No	-	No	-	-
-	1547	Oriole Ave	1977	-	No	-	No	-	-
-	1554	Oriole Ave	1980	-	No	-	No	-	-
-	1555	Oriole Ave	1980	-	No	-	No	-	-

Iowa Inventory Number	Street Number	Street	Year Built	FEMA Program	SHPO Reviewed	SHPO DOE	Surveyor Opinion - Individually Eligible	Surveyor Opinion - District Eligible	Surveyor Opinion District Status - Contributing Or Noncontributing
-	1123	Parker St	1941	-	No	-	No	-	-
-	1124	Parker St	1924	-	No	-	No	-	-
-	1200	Parker St	1940	-	No	-	No	-	-
-	1205	Parker St	1950	-	No	-	No	-	-
-	1208	Parker St	1940	-	No	-	No	-	-
-	1210	Parker St	1927	-	No	-	No	-	-
-	1211	Parker St	1939	-	No	-	No	-	-
-	1218	Parker St	2004	-	No	-	No	-	-
-	1219	Parker St	1946	-	No	-	No	-	-
-	104	Prince Dr	1957	-	No	-	No	-	-
-	110	Prince Dr	1956	-	No	-	No	-	-
-	113	Prince Dr	1955	-	No	-	No	-	-
-	116	Prince Dr	1956	-	No	-	No	-	-
-	117	Prince Dr	1955	-	No	-	No	-	-
-	120	Prince Dr	1956	-	No	-	No	-	-
-	121	Prince Dr	1955	-	No	-	No	-	-
-	100	Prince St	1957	-	No	-	No	-	-
-	130	Prince St	1961	-	No	-	No	-	-
-	301	Rath St	1939	-	No	-	No	-	-
-	307	Rath St	1906	-	No	-	No	-	-
-	309	Rath St	1917	-	No	-	No	-	-
-	407	Rath St	1912	-	No	-	No	-	-
-	413	Rath St	1916	-	No	-	No	-	-
-	417	Rath St	1916	-	No	-	No	-	-
-	425	Rath St	1909	-	No	-	No	-	-
-	427	Rath St	1934	-	No	-	No	-	-
-	433	Rath St	1921	-	No	-	No	-	-
-	104	Rhey St	1941	-	No	-	No	-	-
-	108	Rhey St	1919	-	No	-	Yes	-	-
-	111	Rhey St	1947	-	No	-	No	-	-

Iowa Inventory Number	Street Number	Street	Year Built	FEMA Program	SHPO Reviewed	SHPO DOE	Surveyor Opinion - Individually Eligible	Surveyor Opinion - District Eligible	Surveyor Opinion District Status - Contributing Or Noncontributing
07-08042	115	Rhey St	1929	-	No	-	No	-	-
07-08043	116	Rhey St	1914	-	No	-	Yes	-	-
07-08044	119	Rhey St	1914	-	No	-	Yes	-	-
07-08045	120	Rhey St	1919	-	No	-	Yes	-	-
07-08046	122	Rhey St	1919	-	No	-	No	-	-
07-08047	123	Rhey St	1919	-	No	-	No	-	-
07-08048	124	Rhey St	1907	-	No	-	No	-	-
07-08049	127	Rhey St	1914	-	No	-	No	-	-
07-08050	129	Rhey St	1911	-	No	-	No	-	-
07-08051	130	Rhey St	1919	-	No	-	No	-	-
07-08052	132	Rhey St	1914	-	No	-	No	-	-
07-08053	133	Rhey St	1914	-	No	-	No	-	-
07-11215	136	Rhey St	1937	-	No	-	No	-	-
07-08054	137	Rhey St	1914	-	No	-	No	-	-
07-08269	1506	Riehl St	1926	-	No	-	No	-	-
07-08271	501	Riverside Dr	1909	404	No	-	No	-	-
-	506	Riverside Dr	1914	-	No	-	No	-	-
-	509	Riverside Dr	1910	-	No	-	No	-	-
-	510	Riverside Dr	1914	-	No	-	No	-	-
-	515	Riverside Dr	1908	-	No	-	No	-	-
-	516	Riverside Dr	1910	-	No	-	No	-	-
-	605	Riverside Dr	1937	-	No	-	No	-	-
-	615	Riverside Dr	1914	-	No	-	No	-	-
-	701	Riverside Dr	1910	-	No	-	No	-	-
-	714	Riverside Dr	1905	-	No	-	No	-	-
-	715	Riverside Dr	1908	-	No	-	No	-	-
-	727	Riverside Dr	1951	-	No	-	No	-	-
-	804	Riverside Dr	1914	-	No	-	No	-	-
07-08286	807	Riverside Dr	1909	404	No	-	No	-	-
-	810	Riverside Dr	1910	-	No	-	No	-	-

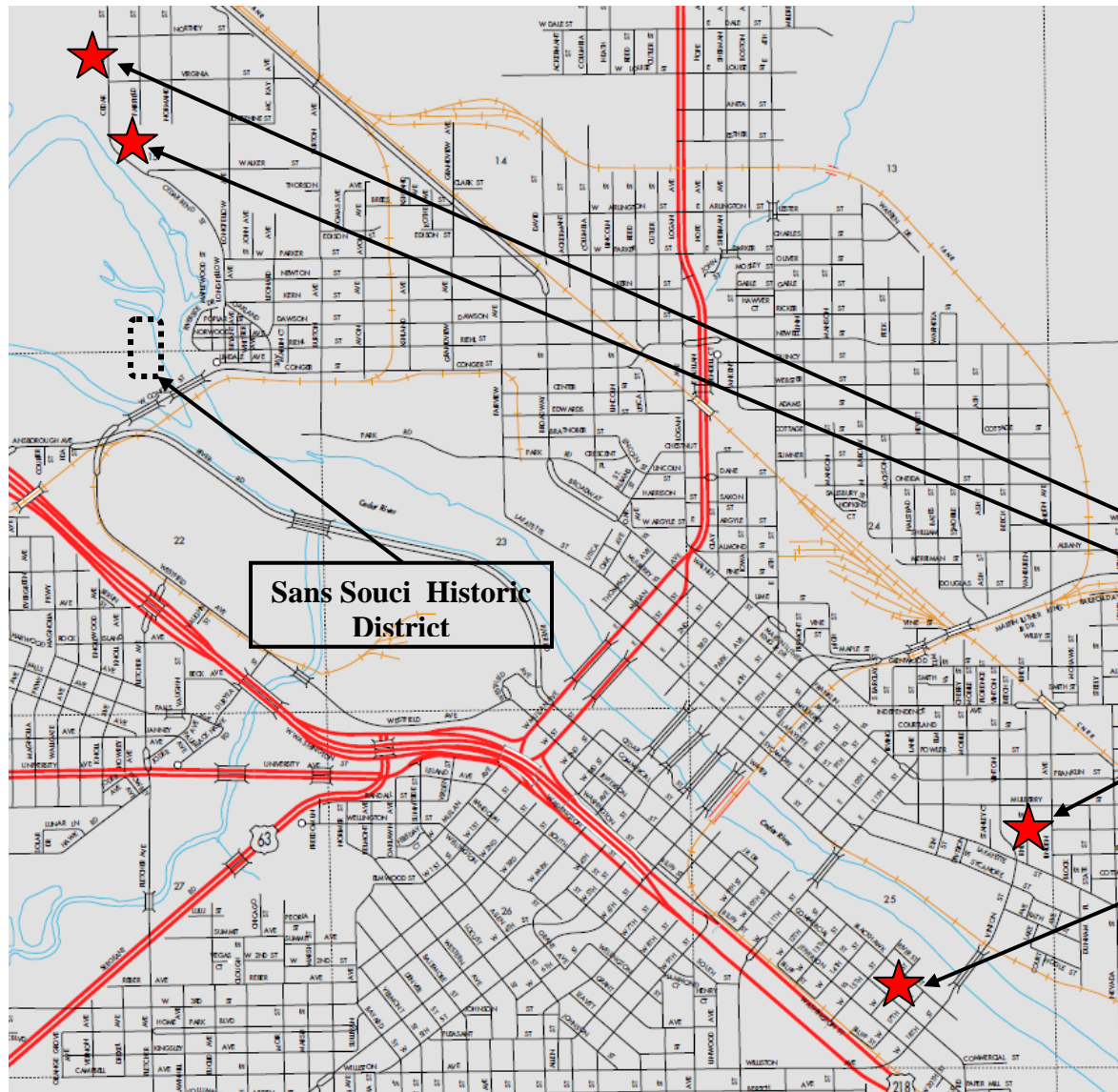
Iowa Inventory Number	Street Number	Street	Year Built	FEMA Program	SHPO Reviewed	SHPO DOE	Surveyor Opinion - Individually Eligible	Surveyor Opinion - District Eligible	Surveyor Opinion District Status - Contributing Or Noncontributing
-	903	Riverside Dr	1962	-	No	-	No	-	-
-	904	Riverside Dr	1961	-	No	-	No	-	-
-	1404	Robin Rd	2005	-	No	-	No	-	-
-	1405	Robin Rd	1976	-	No	-	No	-	-
-	1414	Robin Rd	1938	-	No	-	No	-	-
-	2002	Robin Rd	1976	-	No	-	No	-	-
-	517	Rock Island Ave	1930	-	No	-	No	-	-
-	525	Rock Island Ave	1946	-	No	-	No	-	-
-	110	Ruby Dr	1960	-	No	-	No	-	-
-	115	Ruby Dr	1962	-	No	-	No	-	-
-	116	Ruby Dr	1961	-	No	-	No	-	-
-	119	Ruby Dr	1959	-	No	-	No	-	-
-	120	Ruby Dr	1961	-	No	-	No	-	-
-	123	Ruby Dr	1964	-	No	-	No	-	-
-	124	Ruby Dr	1958	-	No	-	No	-	-
-	127	Ruby Dr	1960	-	No	-	No	-	-
-	128	Ruby Dr	1954	-	No	-	No	-	-
-	130	Ruby Dr	1964	-	No	-	No	-	-
-	133	Ruby Dr	1999	-	No	-	No	-	-
-	137	Ruby Dr	1960	-	No	-	No	-	-
-	216	S Adrian St	1910	-	No	-	No	-	-
-	222	S Adrian St	1910	-	No	-	No	-	-
-	228	S Adrian St	1916	-	No	-	No	-	-
-	234	S Adrian St	1957	-	No	-	No	-	-
-	118	Saint John Ave	1931	-	No	-	No	-	-
07-08325	11	Sans Souci Dr	1919	404	No	-	No	No	-
07-08326	15	Sans Souci Dr	1920	404	No	-	No	No	-
07-08327	19	Sans Souci Dr	1910	404	No	-	No	No	-
07-08328	23	Sans Souci Dr	1917	404	No	-	No	No	-
07-08329	106	Sans Souci Dr	1911	404	No	-	No	Yes	Contributing

Iowa Inventory Number	Street Number	Street	Year Built	FEMA Program	SHPO Reviewed	SHPO DOE	Surveyor Opinion - Individually Eligible	Surveyor Opinion - District Eligible	Surveyor Opinion District Status - Contributing Or Noncontributing
07-08330	110	Sans Souci Dr	1918	404	No	-	No	Yes	Contributing
07-08331	118	Sans Souci Dr	1901	404	No	-	No	Yes	Contributing
07-08332	122	Sans Souci Dr	1914	404	No	-	No	Yes	Contributing
-	128	Sans Souci Dr	1904	404	No	-	No	Yes	Contributing
07-08333	132	Sans Souci Dr	1914	404	No	-	No	Yes	Contributing
07-08334	136	Sans Souci Dr	1922	404	No	-	No	Yes	Contributing
07-08335	140	Sans Souci Dr	1920	404	No	-	No	Yes	Contributing
-	148	Sans Souci Dr	1908	404	No	-	No	Yes	Contributing
07-08336	158	Sans Souci Dr	1921	404	No	-	Yes	Yes	Contributing
07-08337	160	Sans Souci Dr	1912	404	No	-	No	Yes	Contributing
07-08338	164	Sans Souci Dr	1922	404	No	-	No	Yes	Contributing
07-08339	168	Sans Souci Dr	1919	404	No	-	No	Yes	Contributing
07-08340	176	Sans Souci Dr	1917	404	No	-	Yes	Yes	Contributing
07-08341	180	Sans Souci Dr	1914	404	No	-	No	Yes	Contributing
07-08342	186	Sans Souci Dr	1941	404	No	-	Yes	Yes	Contributing
-	1330	Scott Ave	1966	-	No	-	No	-	-
-	1404	Scott Ave	1966	-	No	-	No	-	-
-	1410	Scott Ave	1964	-	No	-	No	-	-
-	4003	Shaulis Rd	1934	-	No	-	No	-	-
-	4011	Shaulis Rd	1965	-	No	-	No	-	-
-	4030	Shaulis Rd	1961	-	No	-	No	-	-
-	4038	Shaulis Rd	1968	-	No	-	No	-	-
-	4048	Shaulis Rd	1969	-	No	-	No	-	-
-	4112	Shaulis Rd	1969	-	No	-	No	-	-
-	4120	Shaulis Rd	1969	-	No	-	No	-	-
-	1107	Sheffield Ave	1925	-	No	-	No	-	-
-	1139	Sheffield Ave	1946	-	No	-	No	-	-
-	1219	Sheffield Ave	1910	-	No	-	No	-	-
-	1221	Sheffield Ave	1938	-	No	-	No	-	-
-	1227	Sheffield Ave	1936	-	No	-	No	-	-

Iowa Inventory Number	Street Number	Street	Year Built	FEMA Program	SHPO Reviewed	SHPO DOE	Surveyor Opinion - Individually Eligible	Surveyor Opinion - District Eligible	Surveyor Opinion District Status - Contributing Or Noncontributing
-	3065	Shirey Way	1967	-	No	-	No	-	-
-	1331	Solar Dr	2006	-	No	-	No	-	-
-	267	Southcrest Dr	1965	-	No	-	No	-	-
-	1724	Sycamore St	1895	-	No	-	No	-	-
-	1800	Sycamore St	1935	-	No	-	No	-	-
-	1804	Sycamore St	1934	-	No	-	No	-	-
-	1812	Sycamore St	1934	-	No	-	No	-	-
-	1818	Sycamore St	1936	-	No	-	No	-	-
-	1822	Sycamore St	1936	-	No	-	No	-	-
-	1826	Sycamore St	1947	-	No	-	No	-	-
-	1830	Sycamore St	1947	-	No	-	No	-	-
-	1836	Sycamore St	1950	-	No	-	No	-	-
-	1900	Sycamore St	1939	-	No	-	No	-	-
-	1904	Sycamore St	1941	-	No	-	No	-	-
-	1912	Sycamore St	1941	-	No	-	No	-	-
-	1918	Sycamore St	1946	-	No	-	No	-	-
-	1922	Sycamore St	1912	-	No	-	No	-	-
-	2245	Temple Ave	1953	-	No	-	No	-	-
-	2247	Temple Ave	1886	-	No	-	No	-	-
-	2250	Temple Ave	1946	-	No	-	No	-	-
-	2253	Temple Ave	1916	-	No	-	No	-	-
-	2257	Temple Ave	1944	-	No	-	No	-	-
-	2260	Temple Ave	1941	-	No	-	No	-	-
-	2266	Temple Ave	1942	-	No	-	No	-	-
-	175	W 16th St	1900	-	No	-	No	-	-
-	175	W 17th St	1927	-	No	-	No	-	-
-	177	W 17th St	1928	-	No	-	No	-	-
-	179	W 17th St	1928	-	No	-	No	-	-
-	184	W 18th St	1938	-	No	-	No	-	-
-	188	W 18th St	1938	-	No	-	No	-	-

Iowa Inventory Number	Street Number	Street	Year Built	FEMA Program	SHPO Reviewed	SHPO DOE	Surveyor Opinion - Individually Eligible	Surveyor Opinion - District Eligible	Surveyor Opinion District Status - Contributing Or Noncontributing
-	1244	Walker St	1955	-	No	-	No	-	-
-	1256	Walker St	1939	-	No	-	No	-	-
-	1302	Walker St	1945	-	No	-	No	-	-
-	104	Woodside Dr	1920	404	No	-	No	-	-
-	106	Woodside Dr	1900	-	No	-	No	-	-
-	114	Wycombe St	1953	-	No	-	No	-	-
-	115	Wycombe St	1950	-	No	-	No	-	-
-	116	Wycombe St	1914	-	No	-	No	-	-
-	119	Wycombe St	1955	-	No	-	No	-	-
-	120	Wycombe St	1955	-	No	-	No	-	-
-	121	Wycombe St	1955	-	No	-	No	-	-
-	333	Wyoming St	1954	-	No	-	No	-	-
-	337	Wyoming St	1954	-	No	-	No	-	-
-	343	Wyoming St	1954	-	No	-	No	-	-
-	347	Wyoming St	1954	-	No	-	No	-	-
-	47	Zuma St	1906	-	No	-	No	-	-
-	50	Zuma St	1942	-	No	-	No	-	-
-	54	Zuma St	1921	-	No	-	No	-	-

v. Maps and Photographs of Potential Individually Eligible NRHP Properties



City of Waterloo Map

Iowa Department of Transportation Online Map



N

★ = individually eligible

641 Cedar Bend Street
570 Cedar Bend Street

108 Rhey Street
116 Rhey Street
119 Rhey Street
120 Rhey Street

1815 Commercial Street



N



House and Garage, 570 Cedar Bend Street (1918), potentially individually NRHP-eligible





House and Garage, 570 Cedar Bend Street, additional views





House, 641 Cedar Bend Street (1928), potentially individually NRHP-eligible



House, 1815 Commercial Street (1901), potentially individually NRHP-eligible



House, 108 Rhey Street (1929), potentially individually NRHP-eligible



House, 120 Rhey Street (1919), potentially individually NRHP-eligible



House, 116 Rhey Street
(1914), potentially individually
NRHP-eligible; streetscape,
with Rhey Street group (108,
116 and 120 Rhey Street)



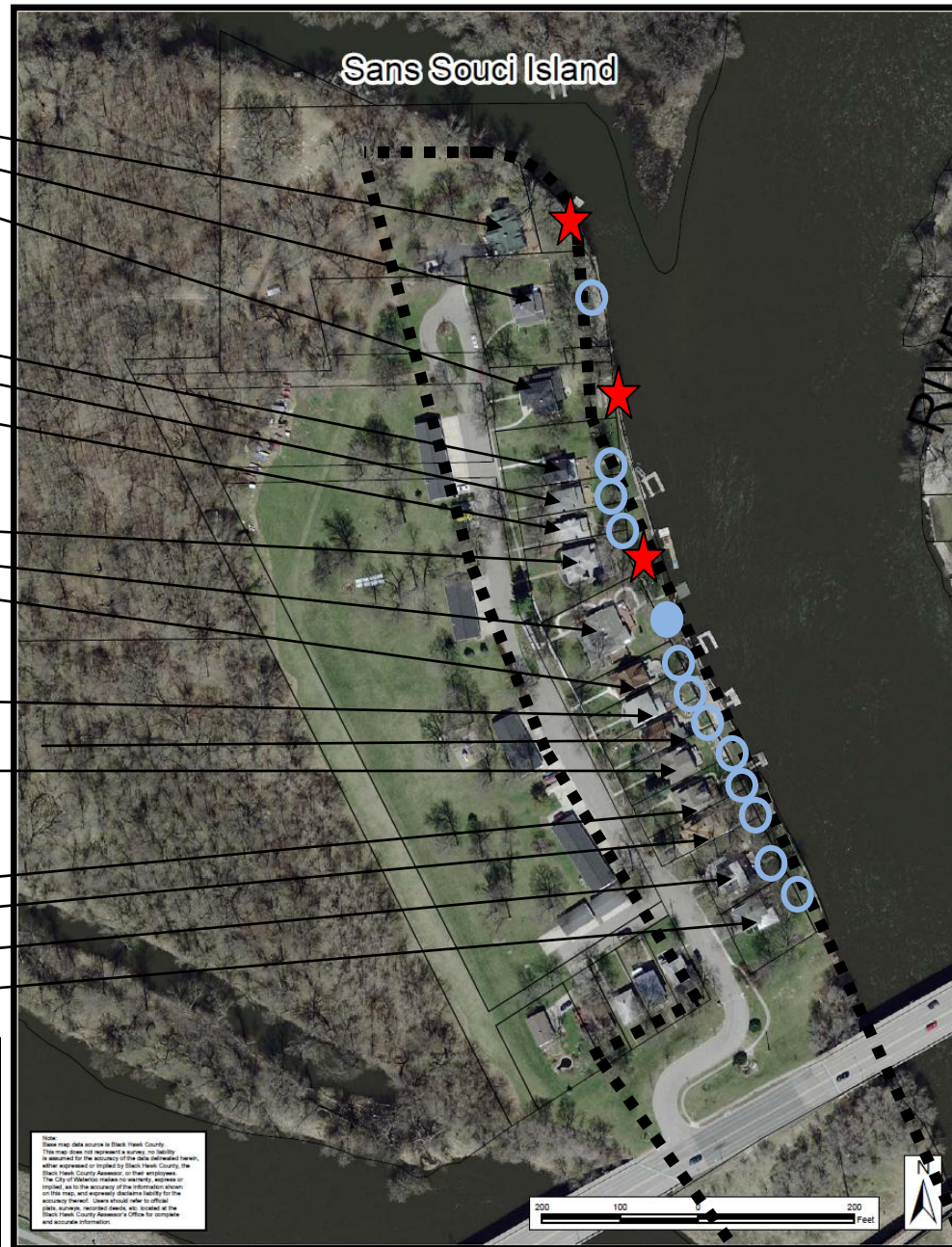
House, 119 Rhey Street (1914), potentially individually NRHP-eligible



Sans Souci Historic District

- 186 Sans Souci Dr
- 180 Sans Souci Dr
- 176 Sans Souci Dr
- 168 Sans Souci Dr
- 164 Sans Souci Dr
- 160 Sans Souci Dr
- 158 Sans Souci Dr
- 148 Sans Souci Dr
- 140 Sans Souci Dr
- 136 Sans Souci Dr
- 132 Sans Souci Dr
- 128 Sans Souci Dr
- 122 Sans Souci Dr
- 118 Sans Souci Dr
- 110 Sans Souci Dr
- 106 Sans Souci Dr

- ★ = Individually NRHP-Eligible
- = Contributing
- = Noncontributing



Sans Souci Historic District – potentially individually NRHP-eligible and contributing resources



House, 106 Sans Souci Drive, *Sans Souci Historic District* (1911), Contributing



House, 110 Sans Souci Drive, *Sans Souci Historic District* (1918), Contributing



House, 118 Sans Souci Drive, *Sans Souci Historic District* (1901), Contributing



House, 132 Sans Souci Drive, *Sans Souci Historic District* (1914), Contributing



House, 136 Sans Souci Drive, *Sans Souci Historic District*
(1922), Contributing



House, 140 Sans Souci Drive, *Sans Souci Historic District*
(1920), Contributing



House, 148 Sans Souci Drive, Sans Souci Historic District (1908), Noncontributing

Sans Souci Historic District, looking northeast



House, 158 Sans Souci Drive, *Sans Souci Historic District* (1921), Individually NRHP-Eligible and Contributing





House, 164 Sans Souci Drive, *Sans Souci Historic District* (1922), Contributing



House, 168 Sans Souci Drive, (far left house), *Sans Souci Historic District* (1919), Contributing, looking southeast



House, 176 Sans Souci Drive, (top, left) *Sans Souci Historic District* (1917), Individually NRHP-Eligible and Contributing; streetscape (below, left) looking northeast





House, 180 Sans Souci Drive, Sans Souci Historic District (1914), Contributing;
streetscape (below, left)
looking southeast



House, 186 Sans Souci Drive, *Sans Souci Historic District* (1941), Individually NRHP-Eligible and Contributing

