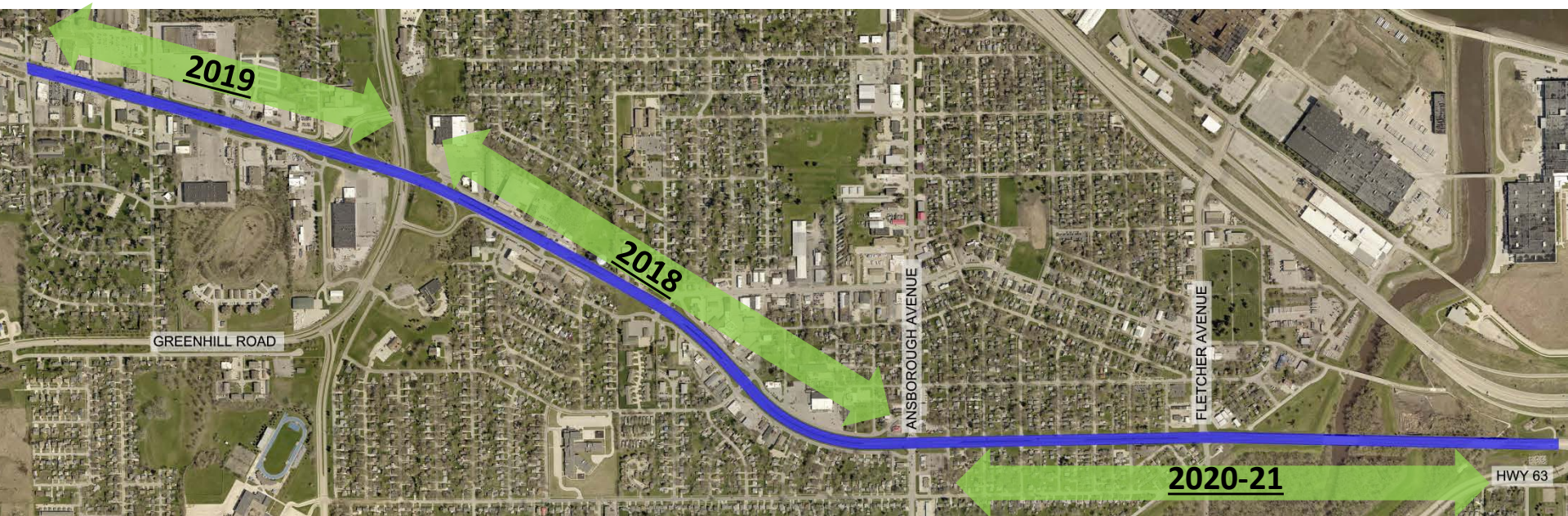


Purpose

- Reconstruct University Avenue for a 30+ year life.
- Optimize corridor operations to move people across and through the area safely and efficiently.
- Develop a Complete Street corridor that is functional and appealing for non-motorists and motorists alike.
- Provide opportunities for future aesthetic enhancements.
- Support growth and revitalization.

Schedule



- Construction shall be staged to maintain business access and through traffic at all times.

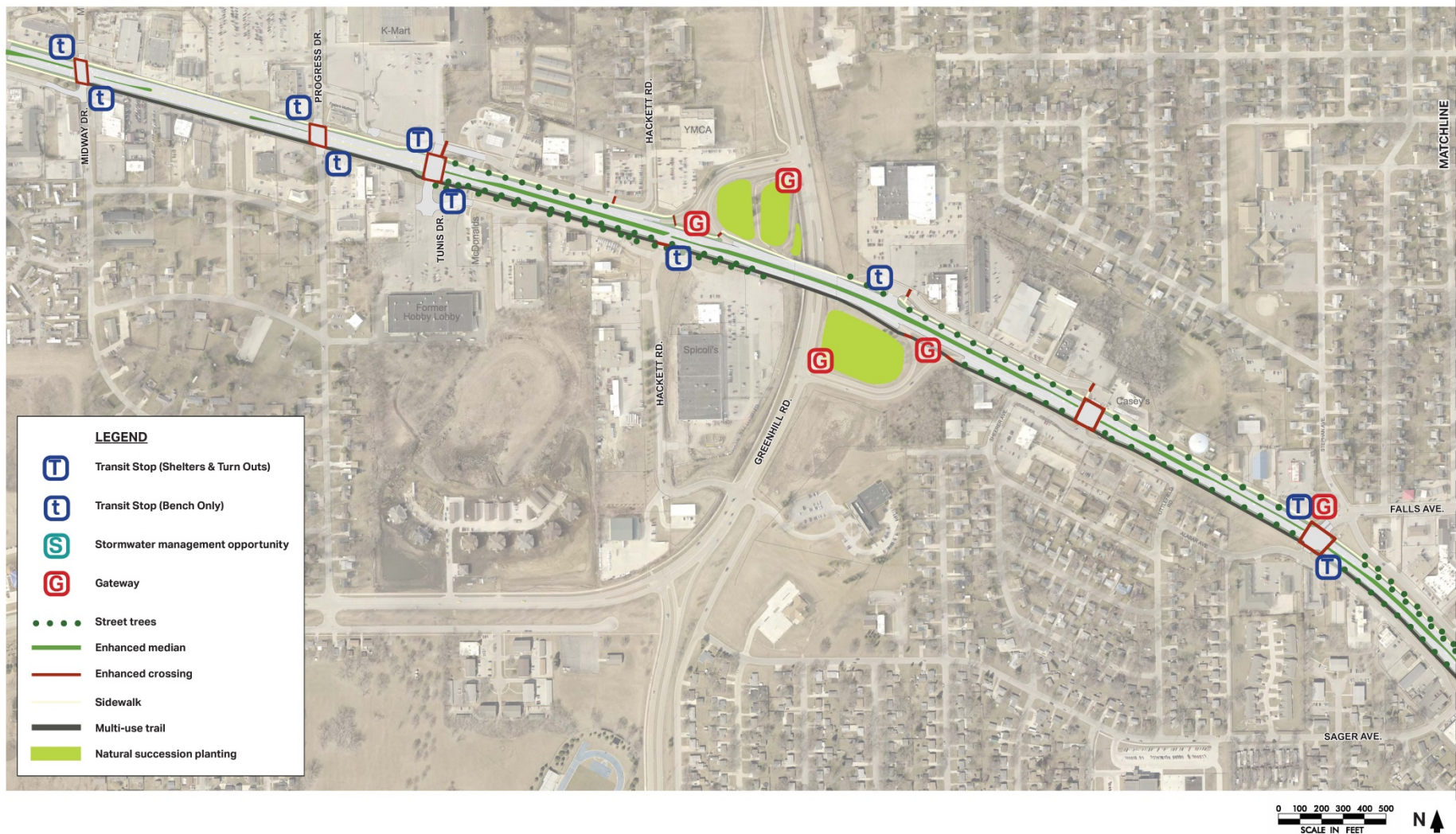
Funding

- Total Project Cost Estimate – \$38 Million
 - Includes typical costs for construction
- IDOT Funding Received – \$28 Million
 - Didn't include costs associated with Storm & Sanitary Sewer, Sidewalk, Multi-Use Path, Lighting or Landscaping
- Searching for Savings Opportunities
 - Delay bridge work
 - Minimize Greenhill Road ramp reconstruction
 - Others
- Grant Opportunities

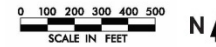
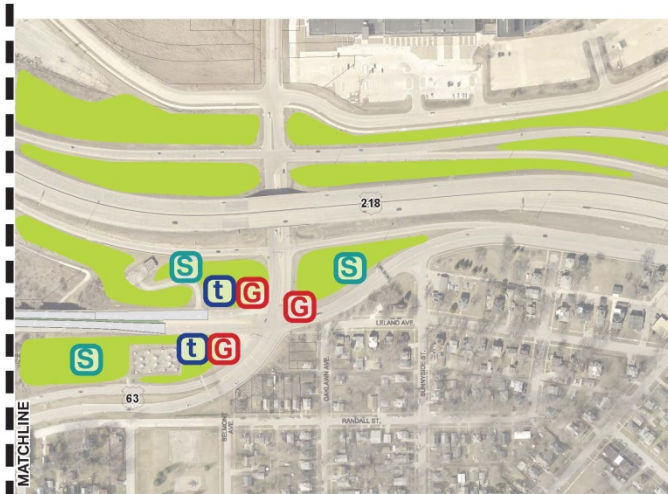
Complete Streets

- Intersection improvements with pedestrian crosswalks
- Road Diet (6-lane to 4-lane cross section)
- Multi-Use Path on the south side
 - Connections to Greenhill Trail & Sergeant Road Trail
- Sidewalks on the north side
 - Connections to adjacent side streets
- Bus Accommodation
- Lighting
- Aesthetics

Aesthetics

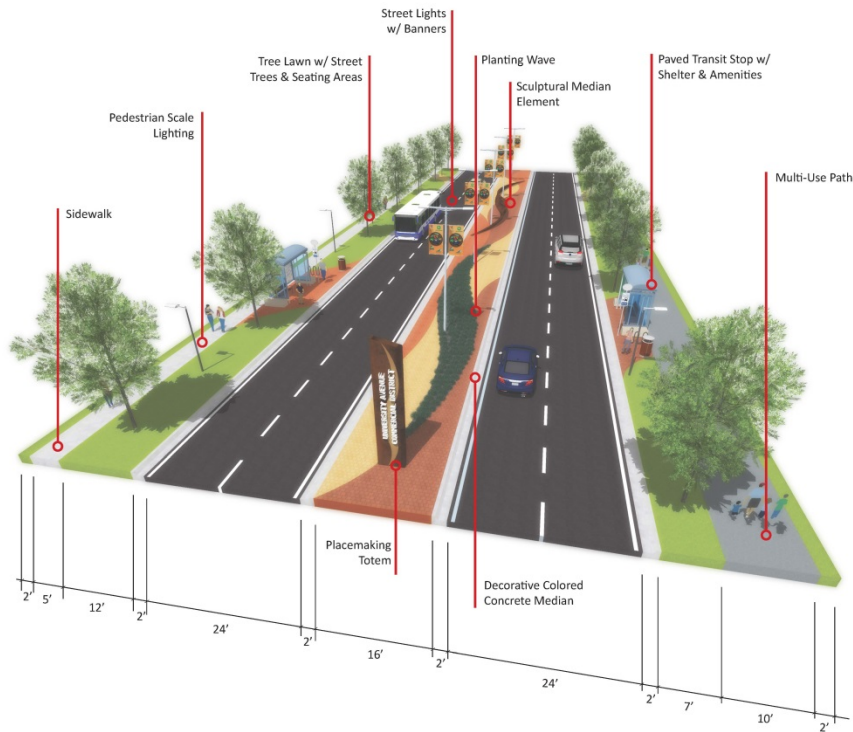


Aesthetics

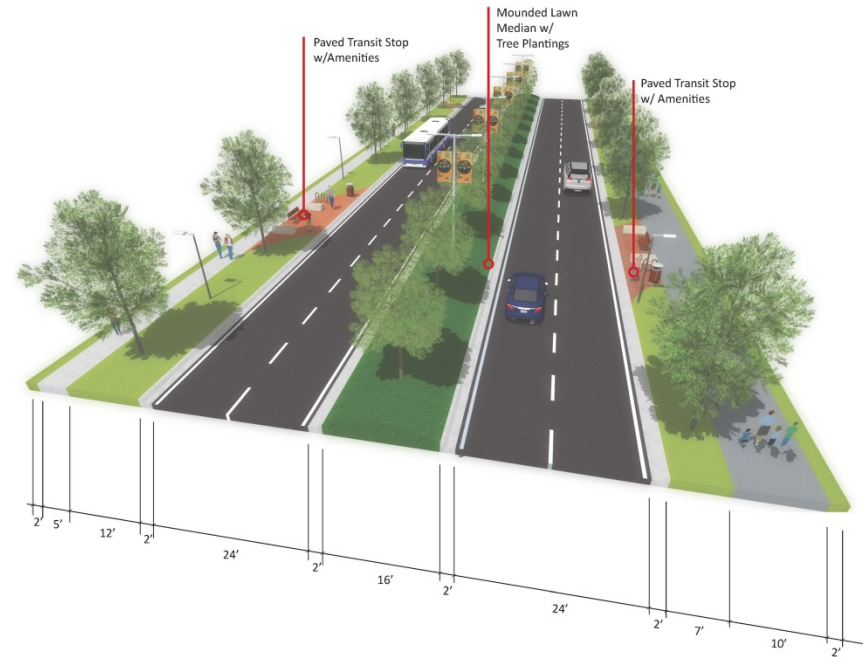


Aesthetics

Commercial District



Residential District



Aesthetics

Gateway



INTERCHANGE GATEWAY SIGNAGE



UNIVERSITY AVENUE GATEWAY
PLANTING CHARACTER



GATEWAY MEDIAN
SIGNAGE

Retaining Walls



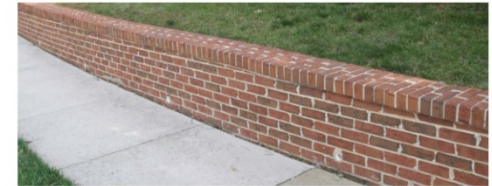
TEXTURED CMU BLOCK WALL



TEXTURED CMU BLOCK WALL



ROSETTA NATURALISTIC STONE WALL (CONCRETE)



BRICK WALL

Stormwater Opportunities/Native Plantings



LAWN BIOSWALE



PLANTED BIOSWALE, LARGE AND SMALL SCALE



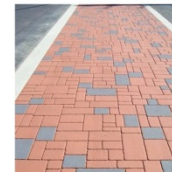
NATIVE MEADOW



Enhanced Crossing



PEDESTRIAN SAFETY ISLAND



SPECIALTY PAVING



PEDESTRIAN PRIORITY
SIGNALIZATION



SPECIALTY MEDIAN TREATMENT AT KEY INTERSECTIONS

